

PREPARED FOR:

Westchester Medical Plaza, LLC
8540 S. Sepulveda Blvd., Suite 706
Los Angeles, CA 90045
Tel (310) 641-4843

**WESTCHESTER MEDICAL PLAZA
8540 S. SEPULVEDA BLVD.
LOS ANGELES, CA**

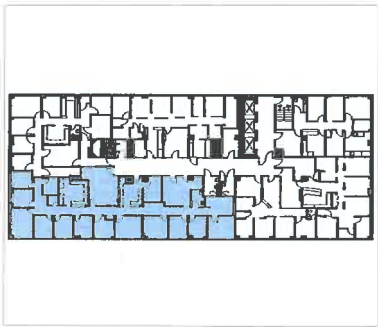
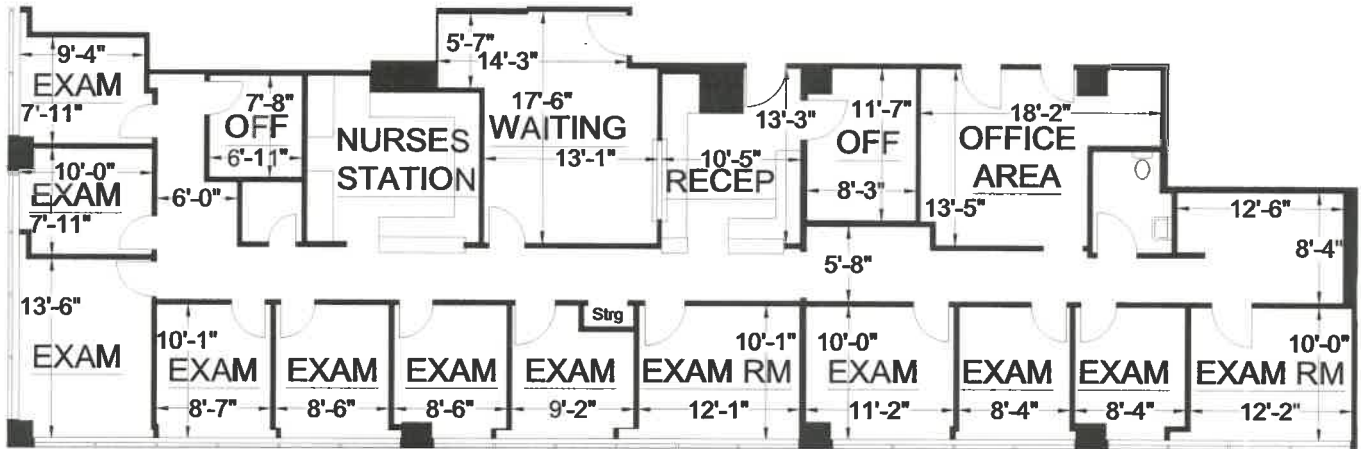
EIGHTH FLOOR

(As Measured: August 2024)
(Last Updated: July 2025)

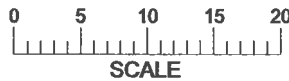


Occupant Area: 2,823 s.f.
Rentable: 3,616 s.f.

SUITE 818



Eighth Floor Inset



<https://LT-FP.com>
TEL: (888) 393-6655
FILE: 25-047 (24-271)

PREPARED FOR:

Westchester Medical Plaza, LLC
8540 S. Sepulveda Blvd., Suite 706
Los Angeles, CA 90045
Tel (310) 641-4843

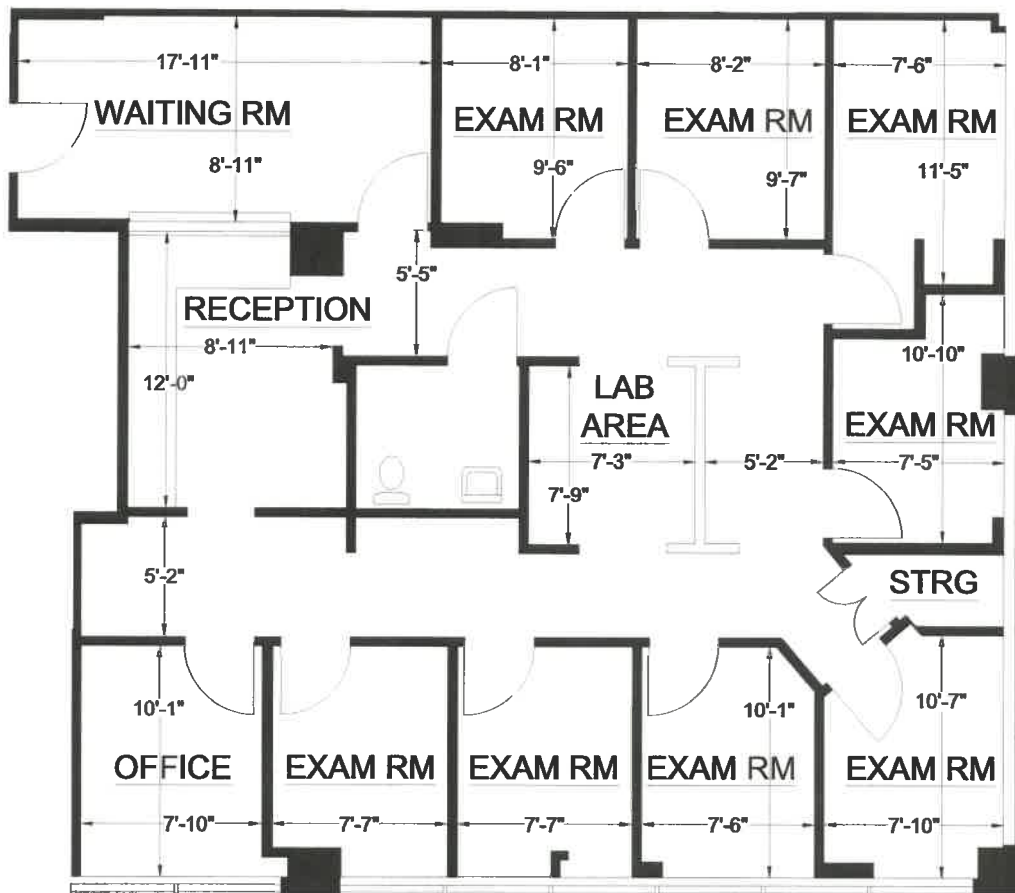
WESTCHESTER MEDICAL PLAZA
8540 S. SEPULVEDA BLVD.
LOS ANGELES, CA

TENTH FLOOR
(As Measured: August 2024)
(Last Updated: July 2025)



Occupant Area: 1,561 s.f.
Rentable: 1,999 s.f.

SUITE 1002



Tenth Floor Inset



SCALE: 1/8" = 1' - 0"



<https://LT-FP.com>
TEL: (888) 393-6655
FILE: 25-047 (24-271)

PREPARED FOR:

Westchester Medical Plaza, LLC
8540 S. Sepulveda Blvd., Suite 706
Los Angeles, CA 90045
Tel (310) 641-4843

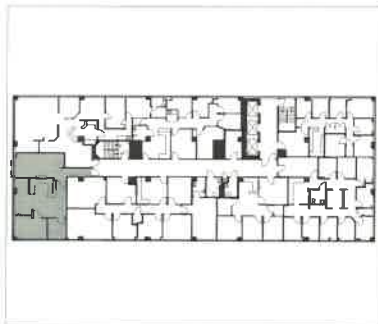
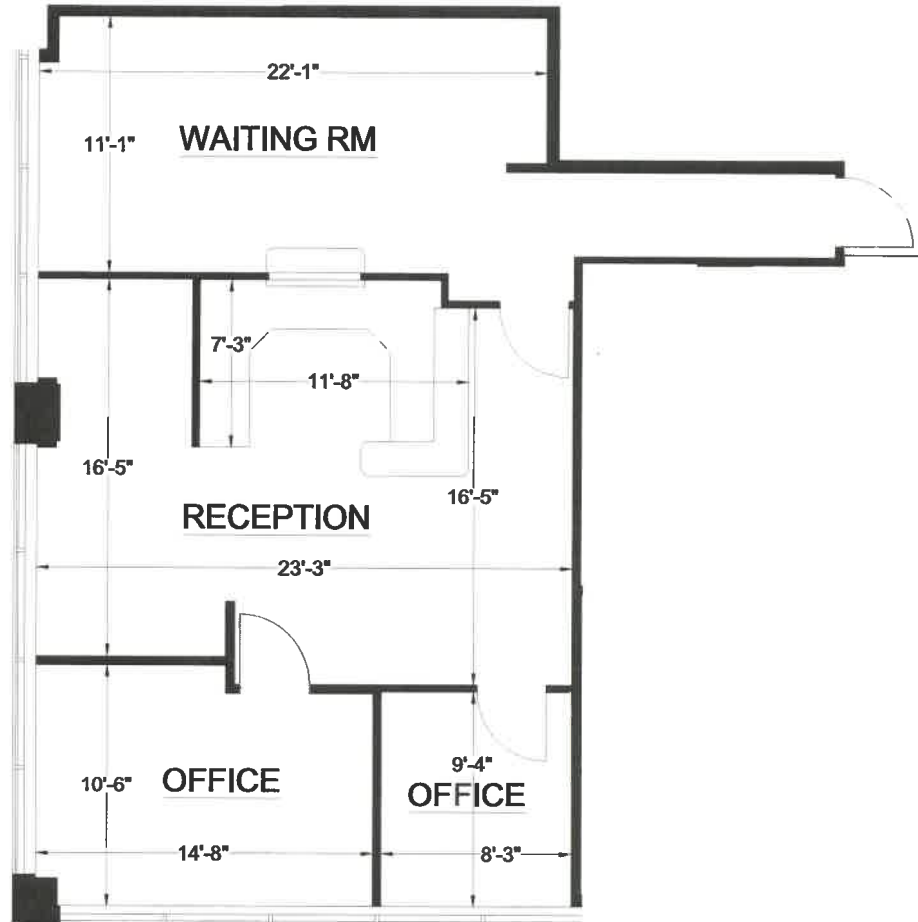
WESTCHESTER MEDICAL PLAZA
8540 S. SEPULVEDA BLVD.
LOS ANGELES, CA

TENTH FLOOR
(As Measured: August 2024)
(Last Updated: July 2025)



Occupant Area: 992 s.f.
Rentable: 1,271 s.f.

SUITE 1011



Tenth Floor Inset



SCALE: 1/8" = 1' - 0"



<https://LT-FP.com>
TEL: (888) 393-6655
FILE: 25-047 (24-271)