

25 BOND STREET
HAVERHILL, MA

FOR LEASE
65,385 SF



FOR MORE INFORMATION CONTACT:

DAVE GILKIE, CCIM, SIOR
DGILKIE@RWHOLMES.COM
(508) 650-9905

R.W. HOLMES
COMMERCIAL REAL ESTATE

 **Atlantic**
CAPITAL PARTNERS™

PROPERTY OVERVIEW

| | |
|----------------------|----------------------------------|
| Building Size | 65,385 SF |
| Suite 1 | 43,785 SF |
| Suite 2 | 21,600 SF |
| Clear Height | 24' |
| Heating | Natural Gas |
| Sewer | City of Haverhill |
| Water | City of Haverhill |
| Power | 2,000A/120 - 208v 3p 4w HEAVY |



AVAILABILITY

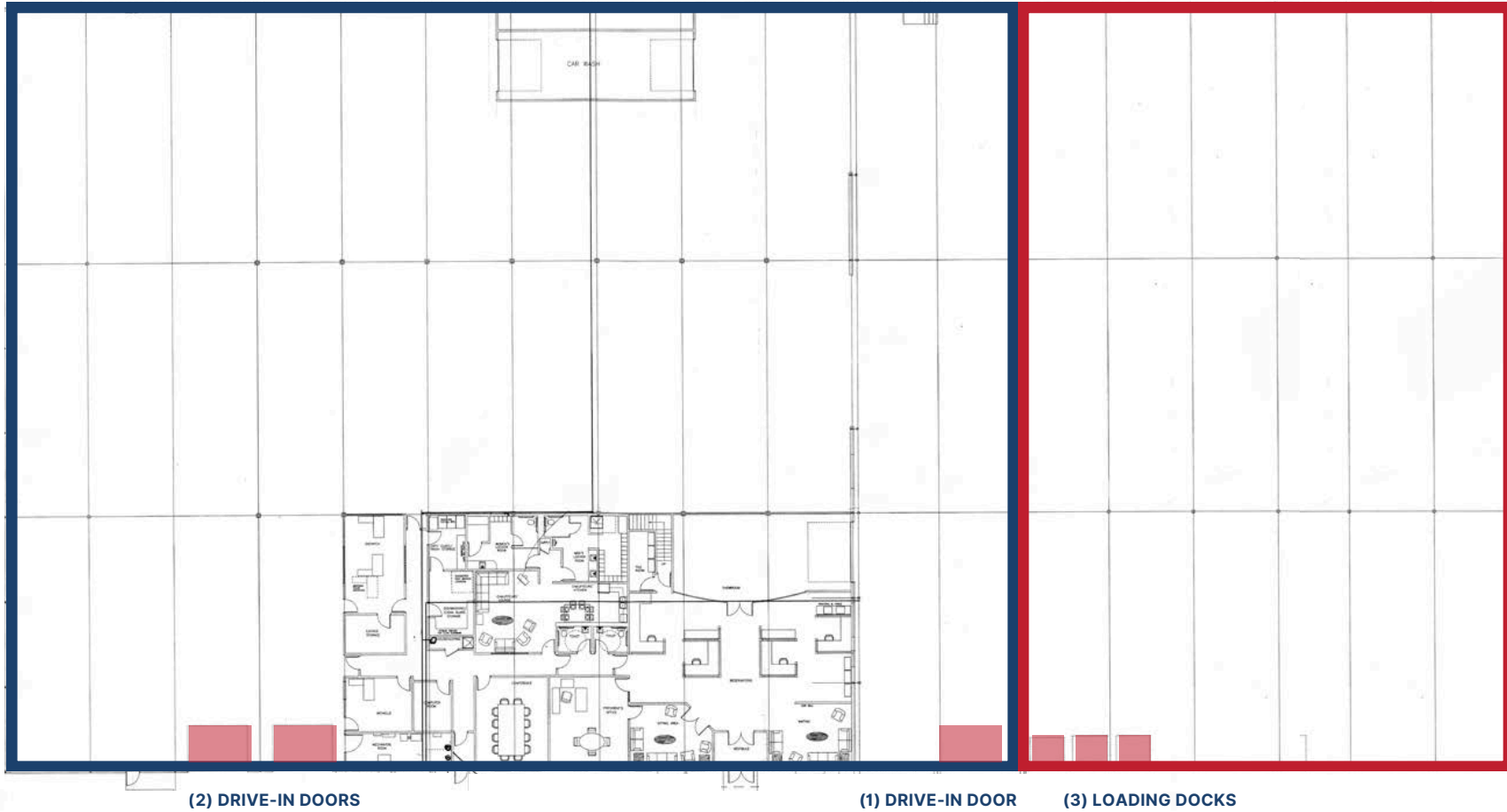
WHOLE BUILDING AVAILABLE: **65,385 SF**

SUITE 1 43,785 SF

SUITE 2 21,600 SF

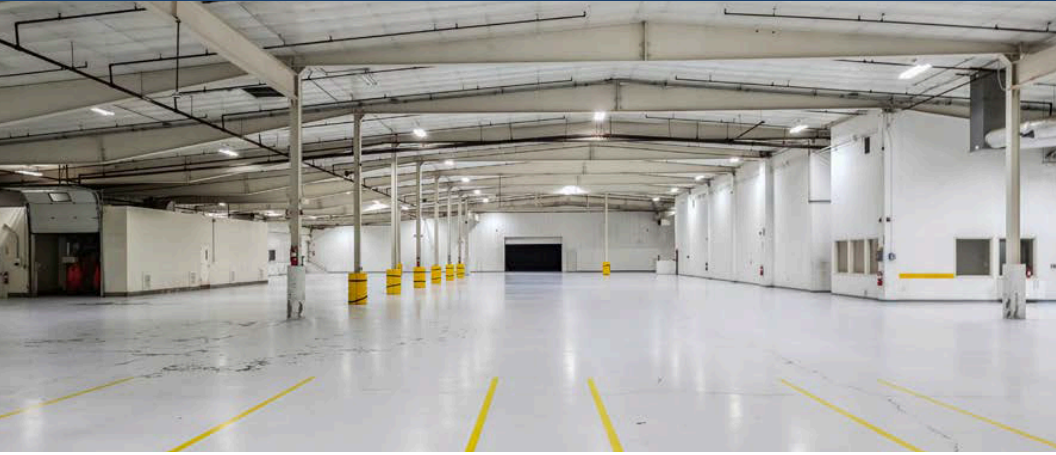


65,385 SF (TOTAL BUILDING AVILABLE)



SUITE 1 | 43,785 SF

SUITE 2 | 21,600 SF



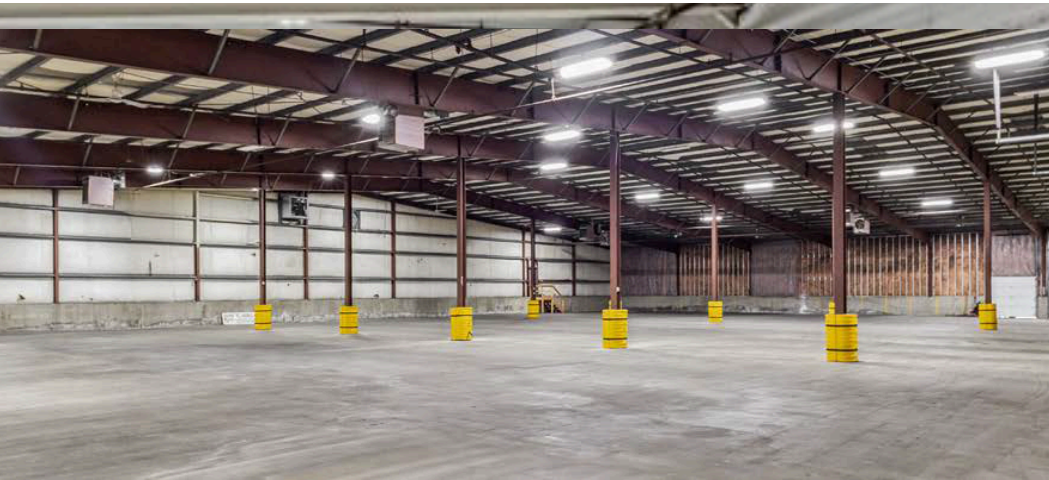
SUITE 1 | 43,785 SF



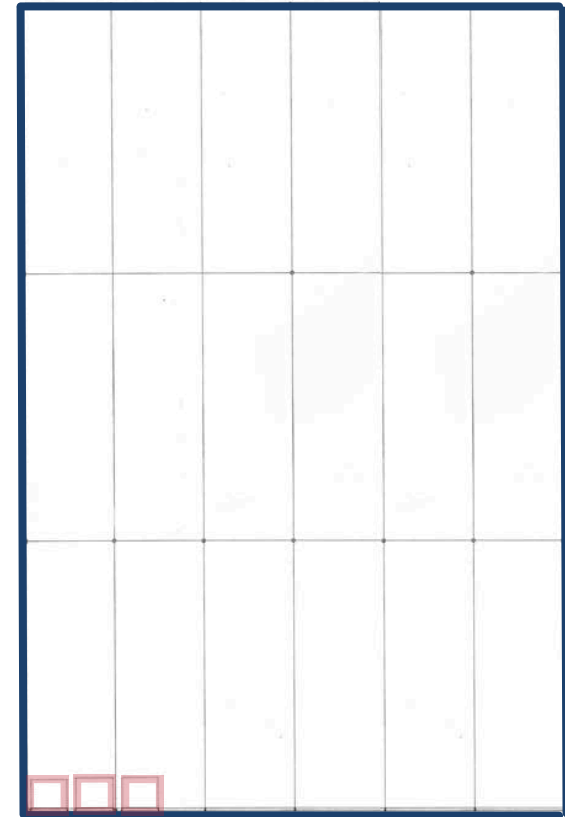
(2) DRIVE-IN DOORS

MAIN ENTRY

(1) DRIVE-IN DOOR



SUITE 2 | 21,600 SF



(3) LOADING DOCKS



ACCESS FROM
25 BOND STREET

PORTSMOUTH
31 MILES

BOSTON
34 MILES

WORCESTER
56 MILES

PROVIDENCE
84 MILES



FOR MORE INFORMATION, PLEASE CONTACT:

DAVE GILKIE, CCIM, SIOR
DGILKIE@RWHOLMES.COM, (508)650-9905

All information furnished regarding property for sale, rental or other financing is from sources deemed reliable. No representation is made as to the accuracy thereof and is submitted subject to errors, omissions, change of price, rental or conditions, prior sale, lease or financing, or withdrawal without notice.

