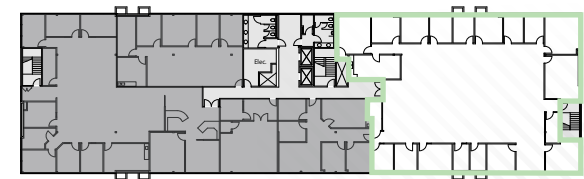
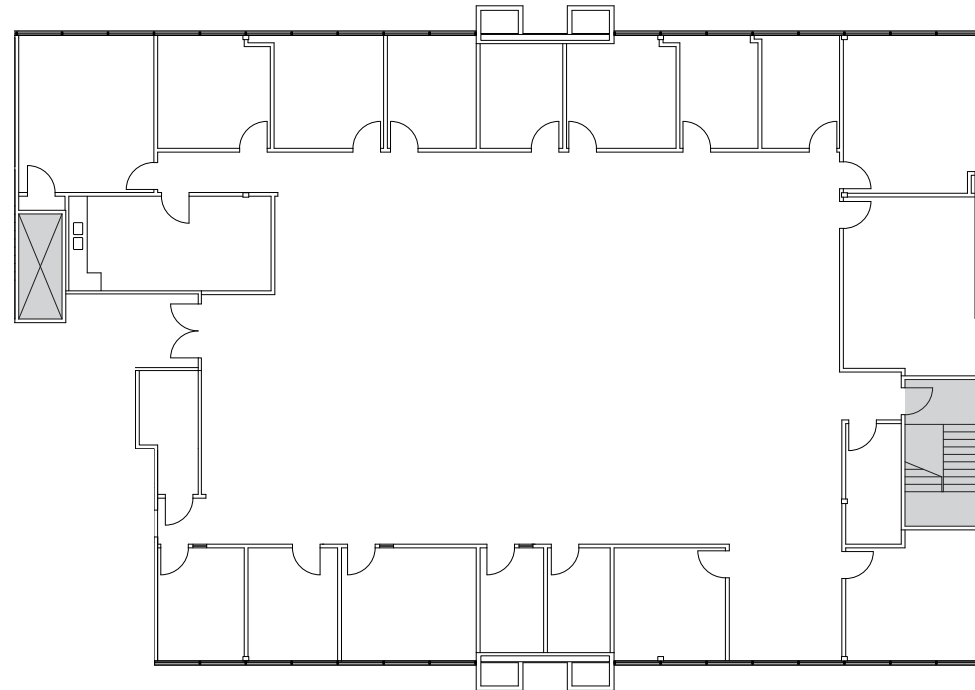


2601 SATURN

BREA, CALIFORNIA

FLOOR PLAN

Suite 302 - 7,485 RSF



LEASING AGENTS:

JAY NUGENT
Executive Managing Director
t 949-608-2035
jay.nugent@nmrk.com
CA RE Lic. #01248267

GREG PUCCINELLI
Senior Managing Director
t 949-608-2036
greg.puccinelli@nmrk.com
CA RE Lic. #01215693

RAYLEE OVERTON
Transaction Manager
t 949-608-2012
raylee.overton@nmrk.com
CA RE Lic. #02082860

CORPORATE LICENSE #01355491 | The distributor of this communication is performing acts for which a real estate license is required. The information contained herein has been obtained from sources deemed reliable but has not been verified and no guarantee, warranty or representation, either express or implied, is made with respect to such information. Terms of sale or lease and availability are subject to change or withdrawal without notice.

NEWMARK

