 **JLL** SEE A BRIGHTER WAY

For Lease

Knightsbridge Business Park
3011 & 3031 Viking Way
861 s.f. - 8,655 s.f.

PROFESSIONAL OFFICE SPACE FOR LEASE

Well positioned amongst Richmond's most popular high-tech and engineering companies in the Crestwood area, both buildings are easily accessible via car or transit on major traffic arteries such as Knight Street and Highways 91 and 99. Knightsbridge Business Park consists of 2 office buildings and 5 industrial buildings situated on a total of 15.7 acres. There are 108 parking stalls for the office buildings which provide ample parking for tenants and guests. Mixed-use zoning allows for a variety of uses. Amenities include: on site EV charging stations, bike racks, and cafés (Boy With a Knife Grill and Red Garden Café).

All available spaces are currently undergoing comprehensive improvements to building standard specifications, including installation of new carpet tiles, energy-efficient LED lighting systems, contemporary roller blinds, and fresh interior paint throughout. These enhancements ensure move-in ready conditions that meet modern workplace standards.

SALIENT DETAILS



ASKING RATE
\$14.95 psf/pa



ADDITIONAL RENT
\$15.56 (2026)

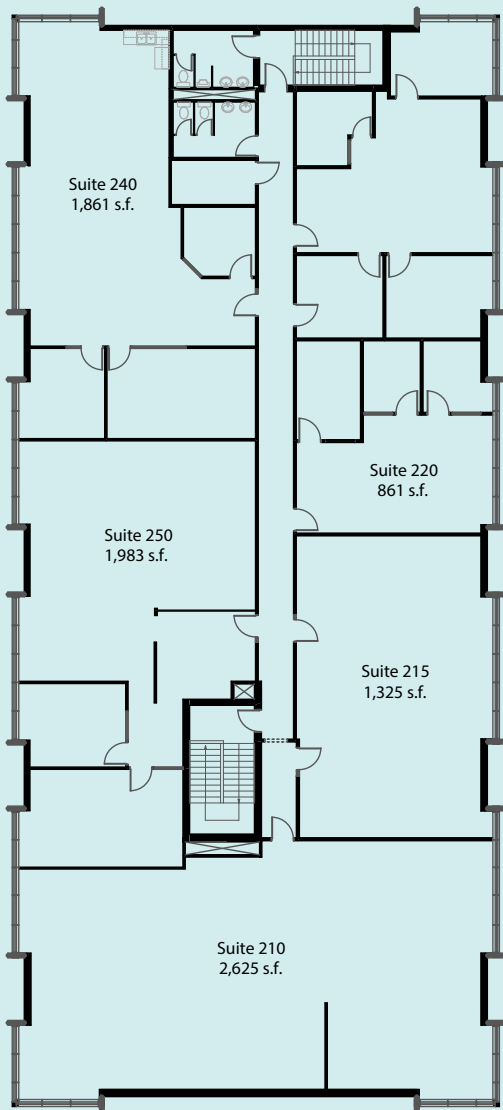


PARKING
1 stall per 360 s.f. leased



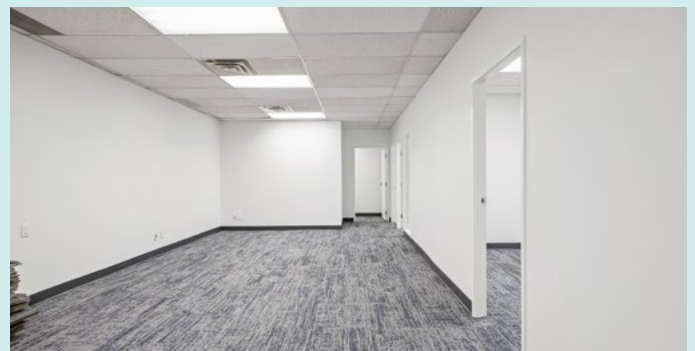
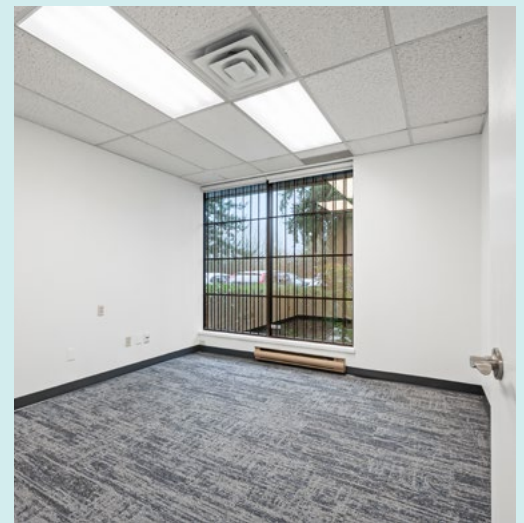
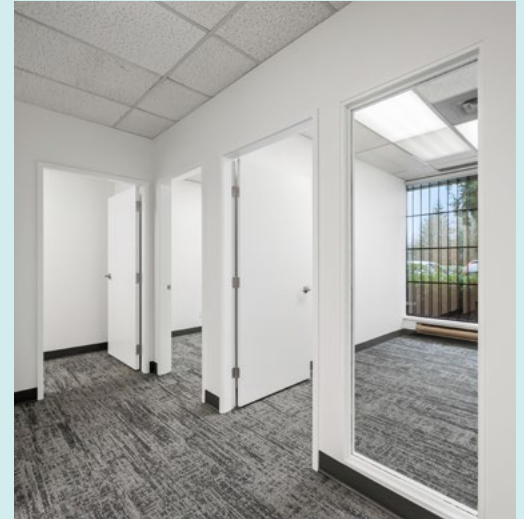
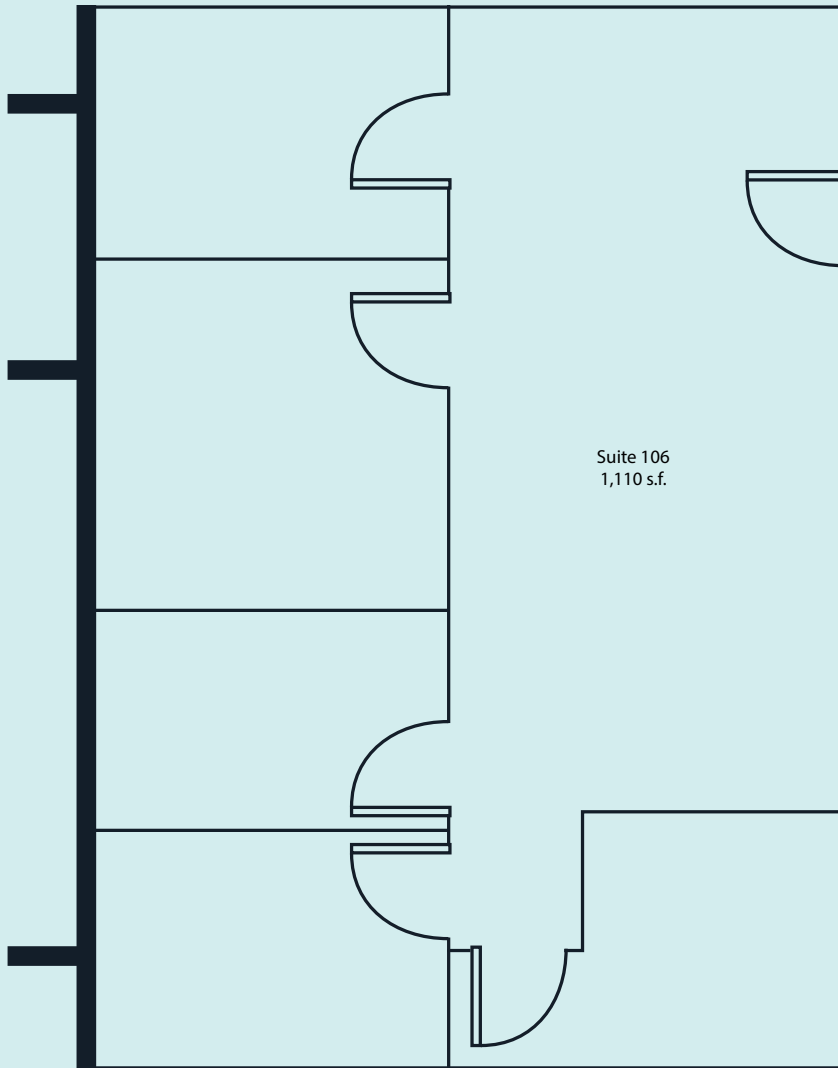
3011 VIKING WAY - AVAILABLE SUITES

SUITE	SIZE	AVAILABILITY	COMMENTS
210	2,625 s.f.	Immediately	Excellent corner unit with windows on three sides and an open plan layout with a kitchen.
215	1,325 s.f.	Immediately	Open plan.
220	861 s.f.	Immediately	Two offices, one meeting room, and open work area.
240	1,861 s.f.	Immediately	Spacious suite including a kitchenette with sink. Click here for a virtual tour.
250	1,983 s.f.	Immediately	Reception area, one boardroom, one private office, and open work area.




3031 VIKING WAY - AVAILABLE SUITE

SUITE	SIZE	AVAILABILITY	COMMENTS
106	1,110 s.f.	Immediately	Spacious suite including 4 private offices and 1 meeting room. Click here for a virtual tour.





 **JLL** SEE A BRIGHTER WAY

Mark Chambers*

Executive Vice President

mark.chambers@jll.com

+1 604 998 6005

Graham Hyslop

Associate

graham.hyslop@jll.com

+1 604 354 7284

Although information has been obtained from sources deemed reliable, neither Owner nor JLL makes any guarantees, warranties or representations, express or implied, as to the completeness or accuracy as to the information contained herein. Any projections, opinions, assumptions or estimates used are for example only. There may be differences between projected and actual results, and those differences may be material. The Property may be withdrawn without notice. Neither Owner nor JLL accepts any liability for any loss or damage suffered by any party resulting from reliance on this information. If the recipient of this information has signed a confidentiality agreement regarding this matter, this information is subject to the terms of that agreement.