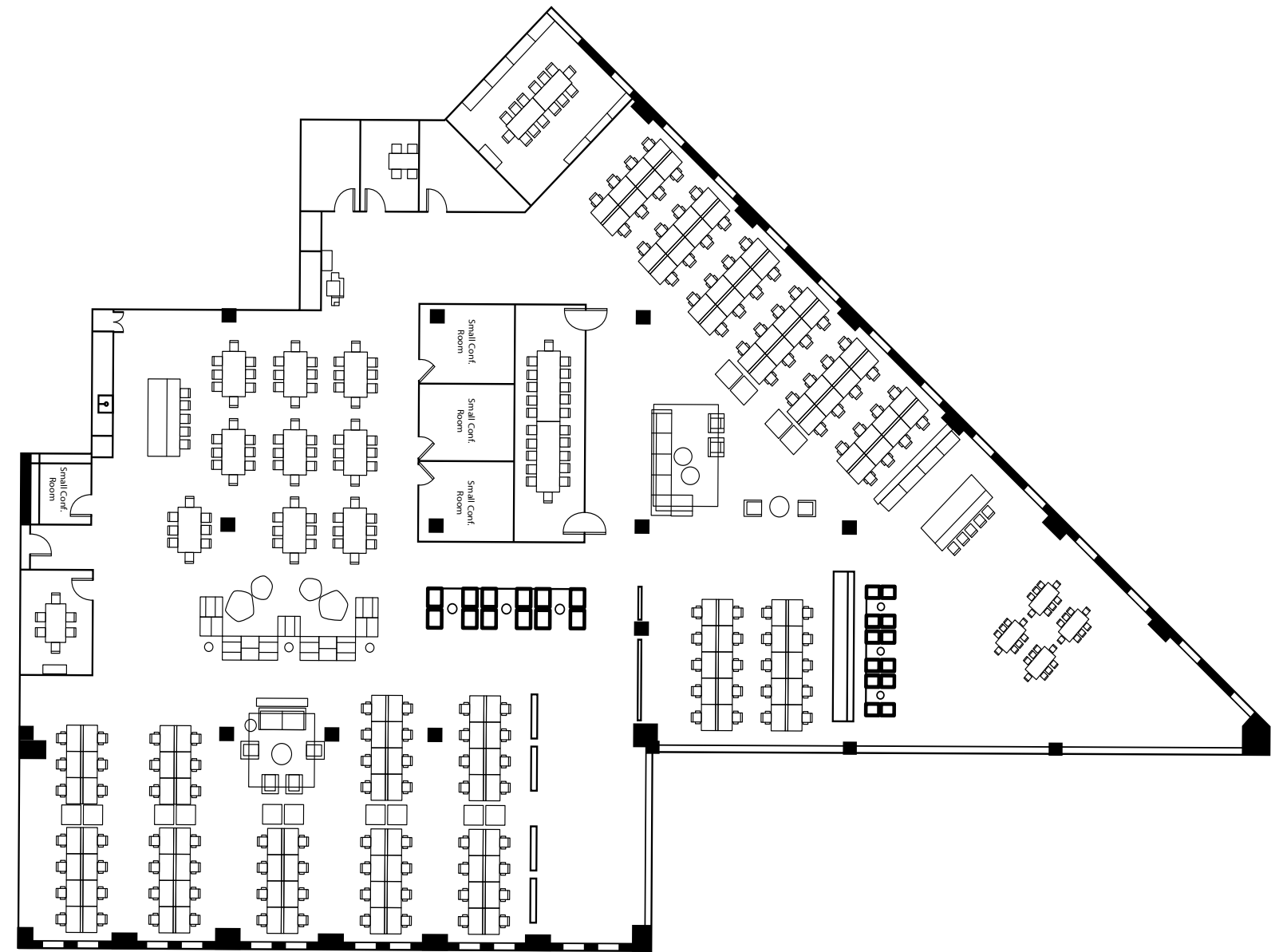
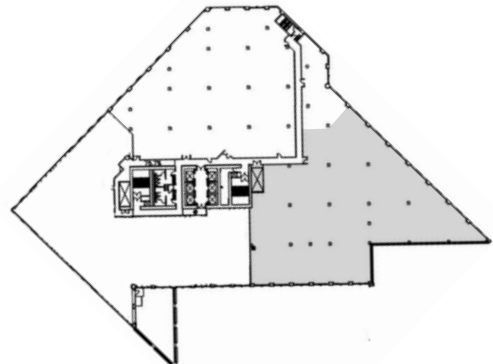


# 303 SECOND STREET - NORTH TOWER

## STE 400

TOTAL RSF	±21,142 RSF
CEILING HEIGHT	11'6"
OCCUPANCY	AVAILABLE NOW
CONDITION	<ul style="list-style-type: none"> <li>• OPEN CEILING CREATIVE SPEC SUITE</li> <li>• FULLY FURNISHED</li> </ul>

FOLSOM STREET



- 7 MEETING ROOMS
- 1 LARGE BOARDROOM
- ALL HANDS SPACE
- 136 WORKSTATIONS WITH ROOM FOR MORE