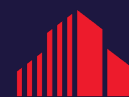


BUILT MEDICAL SPACE WITH A PRIVATE ENTRANCE

# 1128 EASTERN PARKWAY

(CORNER OF UTICA AVENUE & EASTERN PARKWAY)

BROOKLYN, NY



CUSHMAN &  
WAKEFIELD

# 1128 EASTERN PARKWAY

(CORNER OF UTICA AVENUE & EASTERN PARKWAY)

BROOKLYN, NY

## PROPERTY FEATURES

**Available Space:** Second Floor - Approx. 3,000 USF

**Asking Rent:** \$45.00 PSF

**Possession:** Immediately

**Sublease LXD:** June 30, 2038

**Nearby Transit:** Subway lines 2, 3, 4 and nearby bus routes

**Ceiling Heights:** Approx. 12'



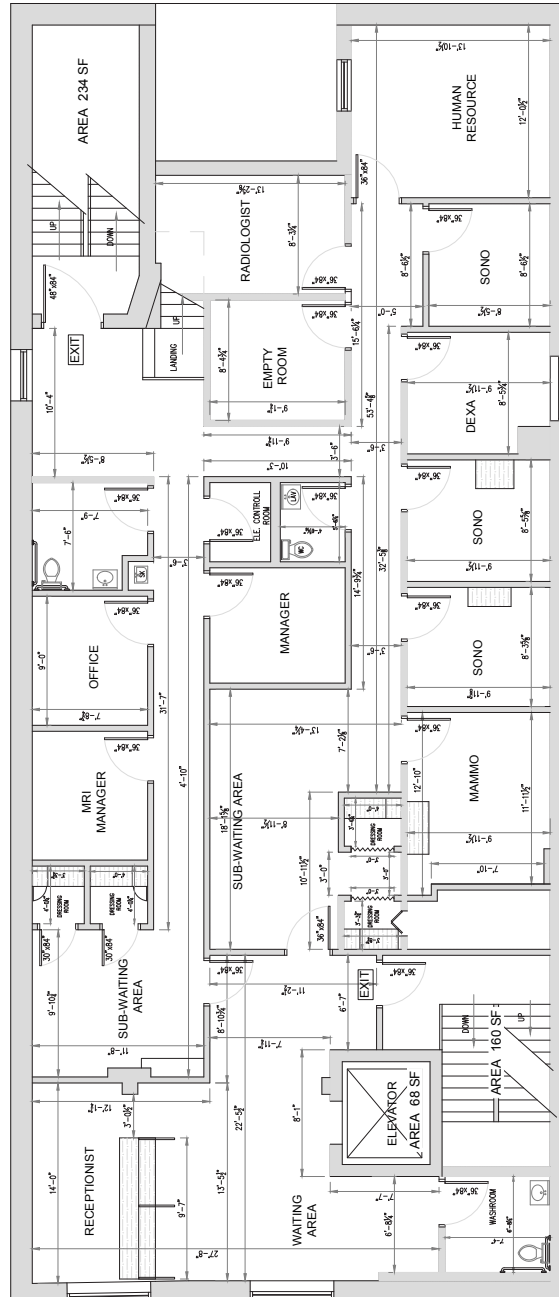
### HIGHLIGHTS

- Private entrance
- ADA compliant
- Elevator
- Currently built out as medical office with 2 bathrooms, waiting area, and medical offices
- Fire systems and HVAC in place

# 1128 EASTERN PARKWAY

(CORNER OF UTICA AVENUE & EASTERN PARKWAY)  
BROOKLYN, NY

## FLOOR PLAN



**JONATHAN SCHINDLER**  
Executive Director  
+1 212 318 9715  
jonathan.schindler@cushwake.com

**JOE HENTZE**  
Director  
+1 718 512 2100  
joe.hentze@cushwake.com