

For Sublease

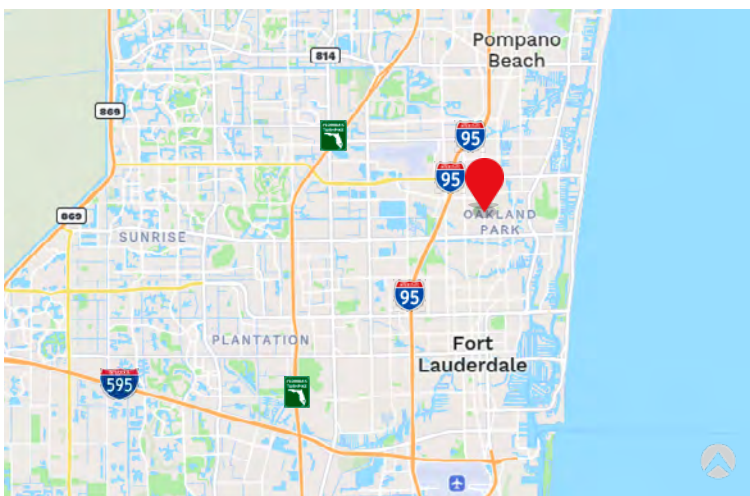
4005 - 4011 NE 6th Avenue
Oakland Park, FL 33334



Industrial Space For Sublease
2,649 - 19,273 SF

4005 - 4011 NE 6th Avenue

Oakland Park, Florida 33334



Location

- Located between Prospect Rd & Oakland Park Blvd. via NE 6th Ave.
- Excellent access to I-95 & Florida's Turnpike via Commercial Blvd.

Space Features

- 19,273 SF total
 - Four (4) bays
 - ±2,649 - 19,273 SF
- Recently renovated
- R-18 Insulation
- Six (6) grade level doors
- 11' clear height
- 3 phase power
- Sublease Expiration 11/30/2029

Peter Sheridan
Senior Managing Director
M +1 954 439 4941
peter.sheridan@jll.com

Yuri Quispe, SIOR
Managing Director
M +1 772 201 5305
yuri.quispe@jll.com

Peter Johnston
Associate
M +1 954 980 3224
peter.johnston@jll.com



For Sublease

4005 - 4011 NE 6th Avenue

Oakland Park, Florida 33334

Space Plan

Suites 4005 - 4011



Suite	Total (SF)	Loading	Clear Height
4005	2,768 SF	1 Grade	11'
4007	5,298 SF	1 Grade	11'
4009	8,558 SF	3 Grade	11'
4011	2,649 SF	1 Grade	11'

Peter Sheridan
Senior Managing Director
M +1 954 439 4941
peter.sheridan@jll.com

Yuri Quispe, SIOR
Managing Director
M +1 772 201 5305
yuri.quispe@jll.com

Peter Johnston
Associate
M +1 954 980 3224
peter.johnston@jll.com



For Sublease

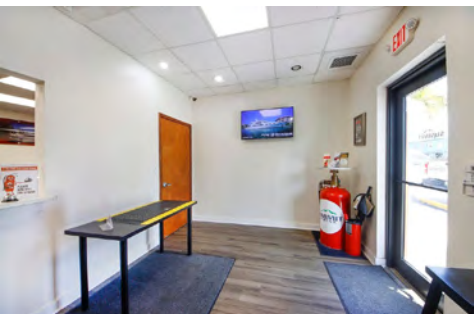
4005 - 4011 NE 6th Avenue

Oakland Park, Florida 33334

Exterior Photos



Interior Photos



Peter Sheridan
Senior Managing Director
M +1 954 439 4941
peter.sheridan@jll.com

Yuri Quispe, SIOR
Managing Director
M +1 772 201 5305
yuri.quispe@jll.com

Peter Johnston
Associate
M +1 954 980 3224
peter.johnston@jll.com

