

**Up to ± 2,500 to 5,000 SF Available**
**PROPERTY HIGHLIGHTS**

- ± 11,000 SF CLASS A OFFICE BUILDING
- LOCATED IN THE HEART OF THE “**MEDICAL MILE**” IN EAST GREENWICH
- SPACE IS LOCATED ON STREET LEVEL AND OFFERS 30 PARKING SPACES
- EXTERIOR RECENTLY UPDATED
- GREAT VISIBILITY ON SOUTH COUNTY TRAIL
- OFFERS 8-10 PRIVATE OFFICES, CONFERENCE ROOM, BREAK ROOM, LARGE SPACE CAN BE CUSTOMIZED
- MONUMENT SIGNAGE AVAILABLE

**TRAFFIC**

- 15,139 VPD ROUTE 2
- 22,359 VPD DIVISION ROAD
- 39,499 VPD ROUTE 4

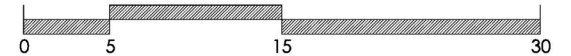
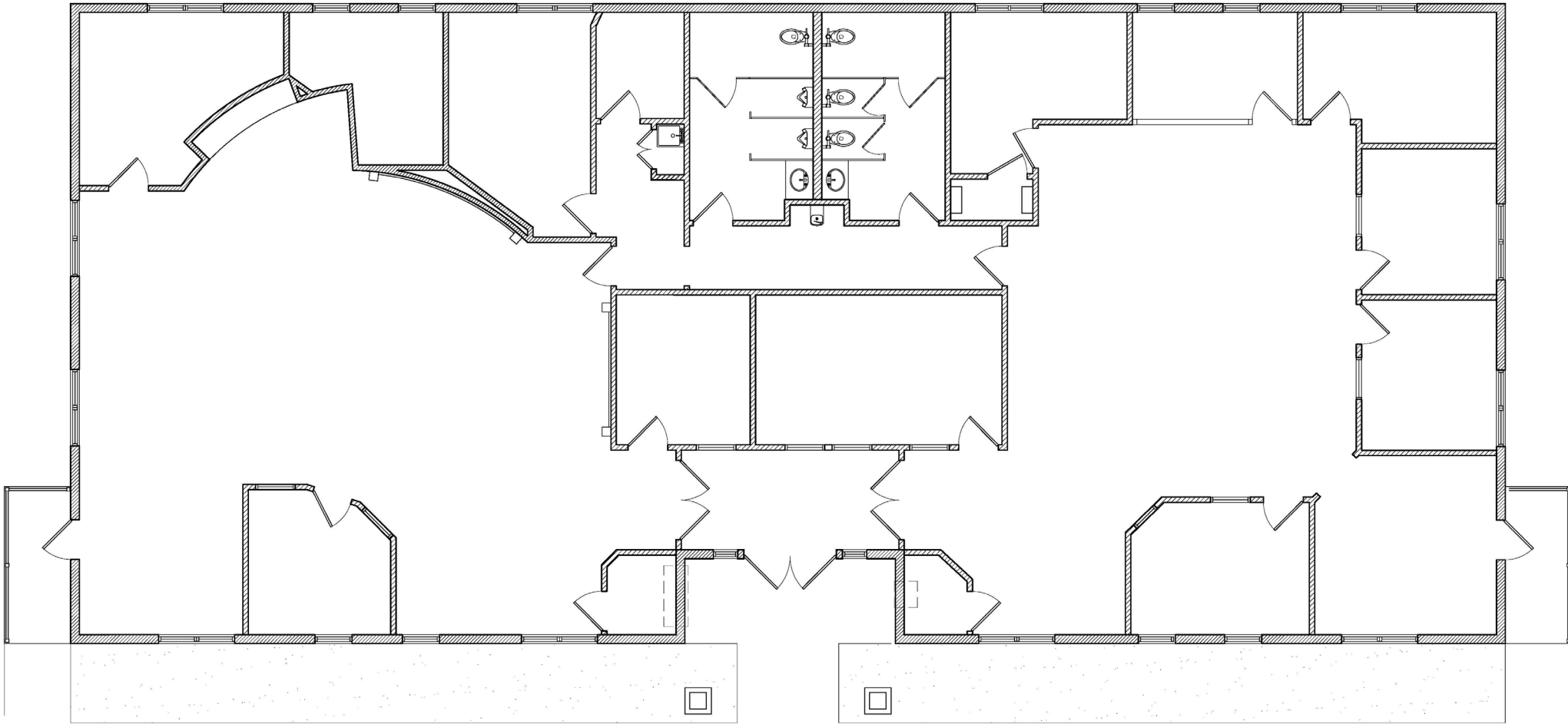
<b>DEMOS</b>	<b>1 MI</b>	<b>2 MI</b>	<b>3 MI</b>
Population	3,464	13,205	29,222
Med HH \$	\$103,335	\$95,973	\$97,307
Total Business	101	642	1,067
Total Employees	869	5,372	9,526

**OFFICE BUILDING LOCATED ON EAST GREENWICH MEDICAL MILE**


For more information, please contact:

**Derek Brazeau**  
**Broker**  
 401.273.2053  
[dbrazeau@hayessherry.com](mailto:dbrazeau@hayessherry.com)

 146 Westminster Street, 2<sup>nd</sup> floor  
 Providence, RI 02903  
 phone: 401.273.1980  
[hayessherry.com](http://hayessherry.com)



FOR LEASE

1370 South County Trail

East Greenwich, RI 02818





HAYES & SHERRY

FOR LEASE

# 1370 South County Trail

East Greenwich, RI 02818

