

4023-4033 N 19TH AVE | PHOENIX, AZ 85015

**±10,310 SF RETAIL/OFFICE**



**FOR SALE**

**Adam Shteir**

Partner  
602.769.0521  
adam@citywidecre.com

**Aimee Sanderson, CCIM**

Sales & Leasing  
480.678.0809  
aimee@citywidecre.com

1645 E Missouri Avenue, Suite 230 • Phoenix, Arizona 85016 • 602.313.1000 • citywidecre.com



All information furnished is from sources deemed reliable. No representation is made as to the accuracy thereof and it is submitted subject to errors, omissions, changes, or withdrawal without notice and to any special listings conditions, including the rate and manner of payment of commissions for particular offerings imposed by principals or agreed to by the company, the terms of which are available to interested principals or brokers. All dimensions are approximate. Owner and/or Broker make no representations expressed or implied as to the accuracy of floor plan/site plan dimensions.

# PROPERTY SUMMARY

4023-4033 N 19TH AVENUE  
PHOENIX, ARIZONA 85015

## BUILDING HIGHLIGHTS

- Sale Price: \$1,725,000 (\$167 PSF)
- +/- 10,310 Square Foot Retail/Office Building
- +/- 1.01 Acre Lot
- Two (2) Freestanding Buildings
- Four (4) Total Parcels:
  - 110-07-089A, 110-07-086, 110-07-081, 110-07-080A
- Natural Gas
- 125 Amps, Single Phase Power
- +/- 21,000 SF Paved/Secured Lot
- Remodeled in 2024
- 19th Avenue Frontage
- C-2 Zoning, City of Phoenix
- **Bldg 1 (8,310 SF):** Private Offices, Reception, Break Room, Restrooms, Rear Workshop with Four 8'x8' Roll-Up doors
  - 1st Floor: +/- 6,000 SF; Residential Unit with Appliances
  - 2nd Floor: +/- 2,310 SF
- **Bldg 2 (2,000 SF):** Open Showroom, Private Restrooms, and Rear Workshop



**Adam Shteir**

Partner  
602.769.0521  
adam@citywidecre.com

**Aimee Sanderson, CCIM**

Sales & Leasing  
480.678.0809  
aimee@citywidecre.com

**citywide**  
COMMERCIAL REAL ESTATE

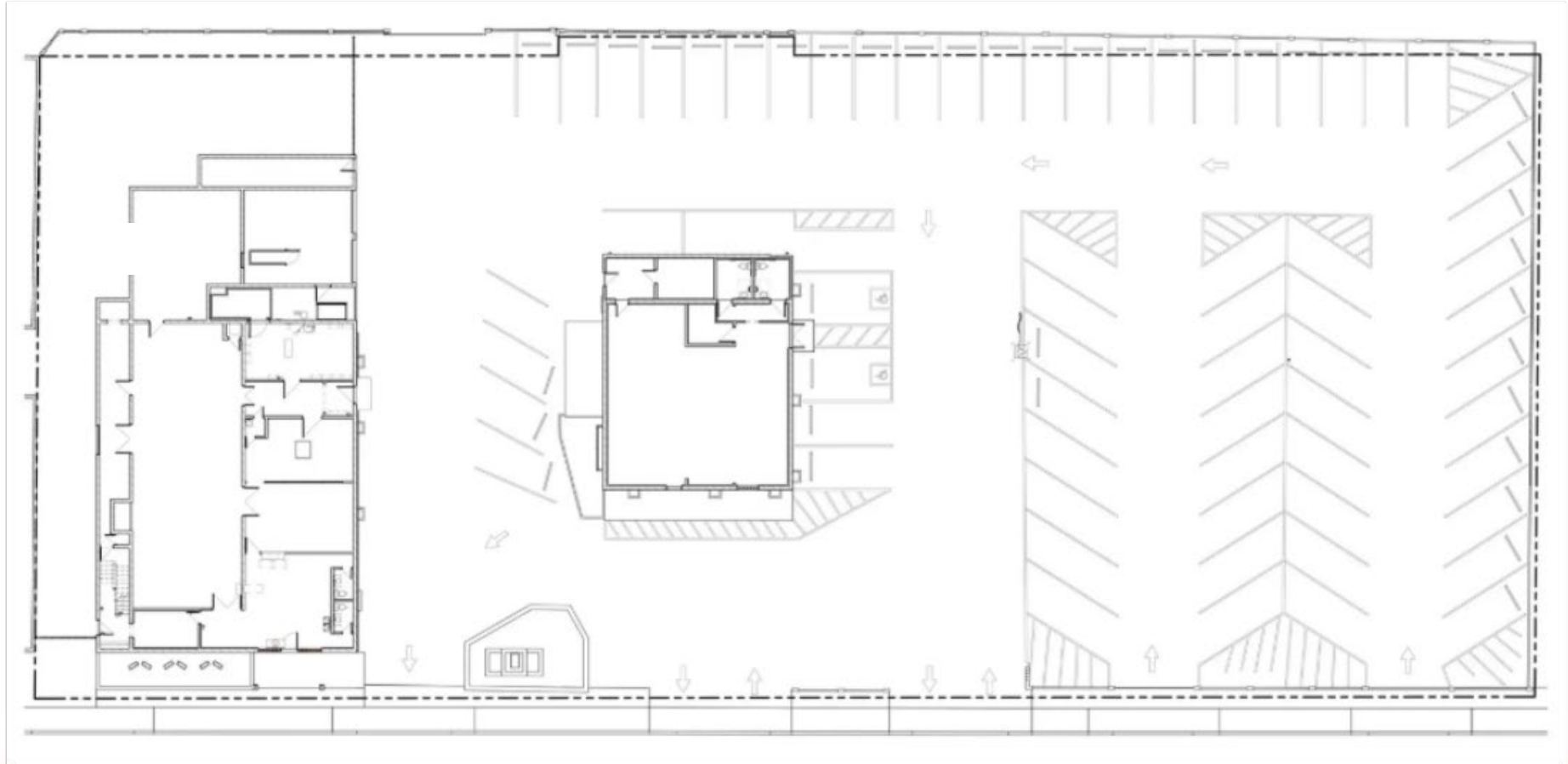
1645 East Missouri Avenue, Suite 230  
Phoenix, Arizona 85016  
602.313.1000 • citywidecre.com





# SITE PLAN

4023-4033 N 19TH AVENUE  
PHOENIX, ARIZONA 85015



**Adam Shteir**

Partner

602.769.0521

adam@citywidecre.com

**Aimee Sanderson, CCIM**

Sales & Leasing

480.678.0809

aimee@citywidecre.com

**citywide**  
COMMERCIAL REAL ESTATE

1645 East Missouri Avenue, Suite 230  
Phoenix, Arizona 85016  
602.313.1000 • citywidecre.com