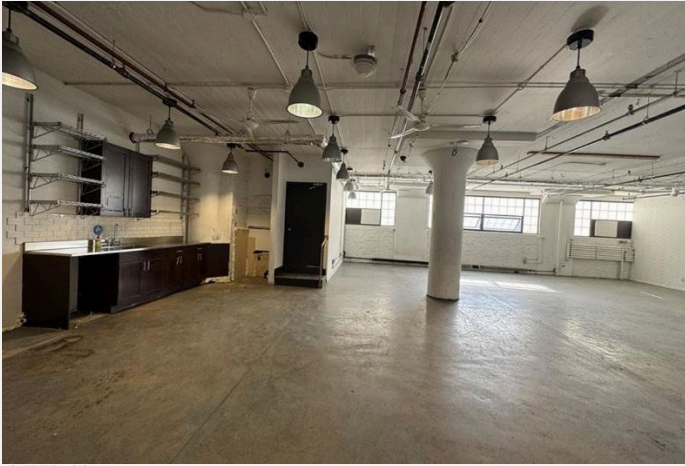


BLDG 3

6TH FLOOR, SUITE 601 - 18,790 SF

POSSESSION: IMMEDIATE



SUITE 601

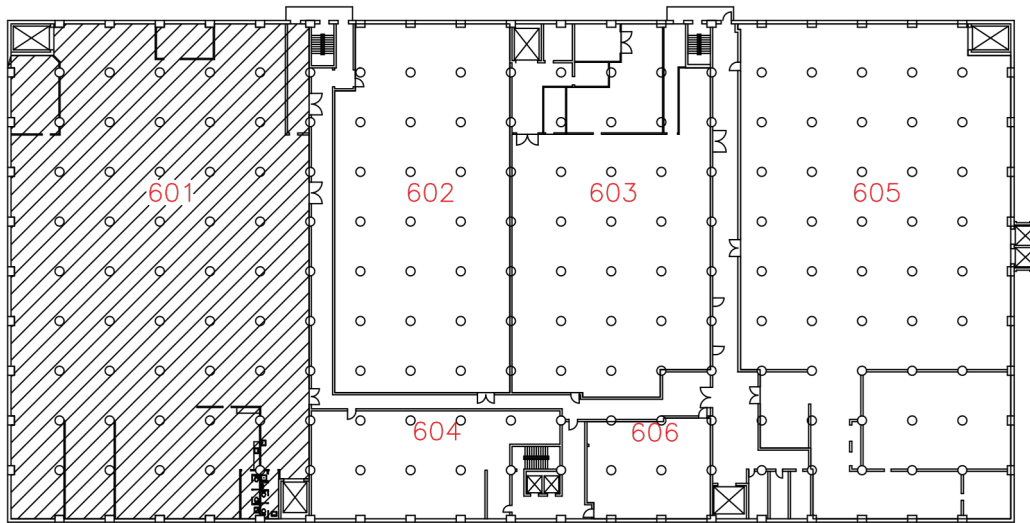


BLDG 3 LOCATION

UNIT HIGHLIGHTS

- Private access to two freight elevators
- Kitchenette
- 10' ceiling
- Men's and Women's restrooms in suite
- Two separate 100 Amp electric services (240v/3ph, 120v/3ph)

6TH FLOOR



FLUSHING AVE

BROOKLYN
NAVY YARD

141 FLUSHING AVENUE
BROOKLYN, NY 11205

JOSEPH COLISTA
SVP, Leasing
jcolista@bnydc.org
929-337-1205