

TO THE BEST OF THE ARCHITECT'S KNOWLEDGE, THESE PLANS AND SPECIFICATIONS COMPLY WITH THE APPLICABLE MINIMUM BUILDING CODES AND THE APPLICABLE FIRE SAFETY STANDARDS AS DETERMINED BY THE LOCAL AUTHORITY IN ACCORDANCE WITH THIS SECTION AND CHAPTER 633, FLORIDA STATUTES. ALL REPORTS, SPECIFICATIONS, COMPUTER FILES, FIELD DATA, AND OTHER DOCUMENTATION PREPARED BY ZINN ARCHITECTURE AND INTERIORS, INC. (ZAI) AS INSTRUMENTS OF SERVICE SHALL REMAIN THE PROPERTY OF ZAI. ZAI SHALL RETAIN ALL COMMON LAW, STATUTORY AND OTHER RESERVED RIGHTS, INCLUDING THE COPYRIGHT THEREON. THIS DRAWING SHALL NEVER BE REPRODUCED IN WHOLE OR IN PART WITHOUT THE EXPRESS WRITTEN PERMISSION OF ZAI.

GENERAL

- GE01 ADJACENT OCCUPANCY: FACTORY/INDUSTRIAL
- GE02 ADJACENT OCCUPANCY: STORAGE (S-1)
- GE03 PER FBCB 303.1.2, A ROOM OR SPACE USED FOR ASSEMBLY PURPOSES THAT IS LESS THAN 750 SF IN AREA AND ACCESSORY TO ANOTHER OCCUPANCY SHALL BE CLASSIFIED AS GROUP B OR AS PART OF THAT OCCUPANCY. THIS ROOM OR SPACE IS XXXX SF, THEREFORE IS CONSIDERED A PART OF THE GROUP B OCCUPANCY.
- GE04 PER FIFC 6.1.14.1.3, BUSINESS, MERCANTILE, STORAGE, AND INDUSTRIAL AREAS THAT ARE INCIDENTAL TO ANOTHER OCCUPANCY SHALL BE PERMITTED TO BE CONSIDERED PART OF THE DOMINANT OCCUPANCY AND SUBJECT TO THE PROVISIONS OF THE CODE THAT APPLY TO THE DOMINANT OCCUPANCY.
- GE05 PER COJ BULLETIN G-1-18, OWNER HAS NOT AUTHORIZED DESTRUCTIVE INVESTIGATION GC TO CONFIRM THAT EXISTING WALL IS FIRE RATED AS REQUIRED PER FBCB TABLE 508.4 FOR SEPARATION (1 HOUR). ADDITIONAL WORK MAY BE REQUIRED FOR GC TO BRING ASSEMBLY INTO COMPLIANCE IF THE ASSEMBLY IS DETERMINED TO BE DEFICIENT. A RATED WALL INSPECTION WILL BE ADDED TO THE PERMIT. DOCUMENTATION CONFIRMING THE RATING WILL NEED TO BE PROVIDED TO THE PLANS EXAMINER. GC TO PROVIDE PHOTOGRAPHIC EVIDENCE OF ASSEMBLY INTEGRITY OR GC SHALL REQUEST A SITE REVIEW BY THE DESIGN PROFESSIONAL TO OBSERVE AND DOCUMENT COMPLIANT CONDITIONS BEFORE THE RATED WALL INSPECTION HOLD WILL BE RELEASED.
- GE06 LOW RACK STORAGE LESS THAN 12 FEET AFF
- EGRESS AND WALKWAYS**
- EG01 44 IN MINIMUM CORRIDOR WIDTH IF SERVING OCCUPANT LOAD OVER 50. IF OCCUPANT LOAD IS <50, 36 IN MINIMUM CORRIDOR WIDTH PER FBC BUILDING 102.0.2
- EG02 COMMON PATH OF WALKWAYS AND EGRESS < 100 FT (SPRINKLERED)
- EG03 EXIT ACCESS TRAVEL LESS THAN 250 FT
- EG04 FURNITURE, SHELVING, OR MOVABLE ITEMS LOCATED AS REQUIRED TO ALLOW WALKWAYS AND EGRESS NOTED, TYP.
- EG05 WALK SURFACE SHALL BE FIRM, EVEN, AND SLIP RESISTANT; SHALL NOT HAVE ABRUPT CHANGES IN LEVEL EXCEEDING 1/4 IN. SHALL NOT SLOPE MORE THAN 1:20 IN THE DIRECTION OF TRAVEL. SHALL NOT SLOPE MORE THAN 1:48 PERPENDICULAR TO THE DIRECTION OF TRAVEL; AND SHALL PROVIDE SAFE CONVEYANCE TO PUBLICWAY.
- EG06 PER FBCB 1007.1.1, WHERE MULTIPLE EXITS ARE REQUIRED, THE MINIMUM EXIT SEPARATION DISTANCE SHALL BE 1/2 DIAGONAL LENGTH OF AREA SERVED IF NOT SPRINKLERED OR 1/3 DIAGONAL LENGTH IF SPRINKLERED. 1/2 DIAGONAL DISTANCE = 85.5 FEET; EXIT SEPARATION = 102 FEET

ELECTRICAL

- ELO1 EMERGENCY EGRESS FIXTURE, TYP.
- ELO2 ILLUMINATED EXIT SIGN/EMERGENCY EGRESS FIXTURE COMBO, TYP.

FINISHES

- FN01 TEMPERED GLASS AS REQUIRED BY FBCB 2406.4 IN ALL OPERABLE OR FIXED DOOR ASSEMBLIES, IN ASSEMBLIES WITHIN 24 INCHES OF DOORS, IN WINDOWS WITH BOTTOM EDGE LESS THAN 18 INCHES AFF AND TOP EDGE GREATER THAN 36 INCHES AFF HAVING INDIVIDUAL PANES WITH AN AREA GREATER THAN 9 SF. EXISTING TEMPERED GLAZING TO BE CONFIRMED BY GC IN LOCATIONS AS DESCRIBED BY FBCB 2406.4, TYP.

MILLWORK

- ML01 ACCESSIBLE KITCHEN OR KITCHENETTE COUNTERTOPS TO BE 34 IN A.F.F. PER FBCA 804.3.2

MOUNTING HEIGHTS AND CLEARANCES

- MN01 30 IN WIDE BY 48 IN DEEP MANEUVERING CLEARANCE PER FBCA 305.3 AND KNEE AND TOE CLEARANCE PER FBCA 306.2 AND 306.3.
- MN02 FIRE EXTINGUISHER MOUNTED W/ OPERABLE CONTROLS @ 48 IN AFF. ACTUAL LOCATION MAY VARY TO MEET 75 FOOT MAX DISTANCE REQUIREMENTS. FIRE EXTINGUISHERS WILL BE INSTALLED PER NFPA 10, BY A LICENSED FIRE EQUIPMENT CONTRACTOR PRIOR TO THE FIRE SAFETY FINAL INSPECTION ON THE BUILDING.

OPENINGS

- OP01 DOOR HAVING A 32 INCH CLEAR OPENING PER FBCA 404.2.3, AS MEASURED BETWEEN THE FACE OF THE DOOR AND THE STOP, WITH THE DOOR OPEN 90 DEGREES, PER EXCEPTION 1, IN ALTERATIONS A PROJECTION OF 5/8" MAXIMUM INTO THE REQUIRED CLEAR WIDTH SHALL BE PERMITTED FOR THE LATCH SIDE STOP.
- OP02 FRONT APPROACH, PULL SIDE CLEARANCE: 18 IN ADJACENT TO LATCH AND 60 IN DEEP PER FBCA 404.2.4.1
- OP03 FRONT APPROACH, PUSH SIDE CLEARANCE: 12 IN ADJACENT TO LATCH (IF DOOR HAS CLOSER) AND 48 IN DEEP PER FBCA 404.2.4.1
- OP04 OVERHEAD DOOR, TYP.

PLUMBING AND PLUMBING FIXTURES

- PL01 HI-LO DRINKING FOUNTAIN COMPLYING WITH FBCA 602. LOWER EXTENT OF UNIT SHOULD BE LESS THAN 27" AFF WHILE STILL COMPLYING WITH ADA MOUNTING HEIGHTS INDICATED ON INDEX SHEET. PROVIDE SHROUD OR OTHER EARLY WARNING BARRIER IF NECESSARY TO COMPLY WITH FBCA 307.2 PROTRUSION LIMITS
- PL02 SERVICE/UTILITY SINK
- PL03 SPRINKLER HEADS PROVIDED THROUGHOUT BUILDING SPACED AS REQUIRED BY NFPA 13, TYP.

SIGNAGE

- SN01 TACTILE EXIT SIGNAGE AT 60 IN AFF TO CENTERLINE PER FBCA 703.4 AND FIFC 7.10.1.3 - SEE DETAIL SHEET
- SN02 DIRECTIONAL RESTROOM SIGNAGE AT 60 IN AFF TO CENTERLINE. SEE DETAIL SHEET.

WALLS, COLUMNS, AND PARTITIONS

- WA01 1 HOUR RATED TENANT SEPARATION WALL; SEE DETAIL SHEET FOR ASSEMBLY INFORMATION
- WA02 PARTITION EXTENDS TO UNDERSIDE OF ROOF DECK - FIRE CAULK ALL PENETRATIONS AND JOINTS
- WA03 PER 508.2.4, NO SEPARATION IS REQUIRED BETWEEN ACCESSORY OCCUPANCIES AND THE MAIN OCCUPANCY
- WA04 EXISTING FIRE RATING TO BE MAINTAINED FOR FUTURE TENANT OPTION VIABILITY

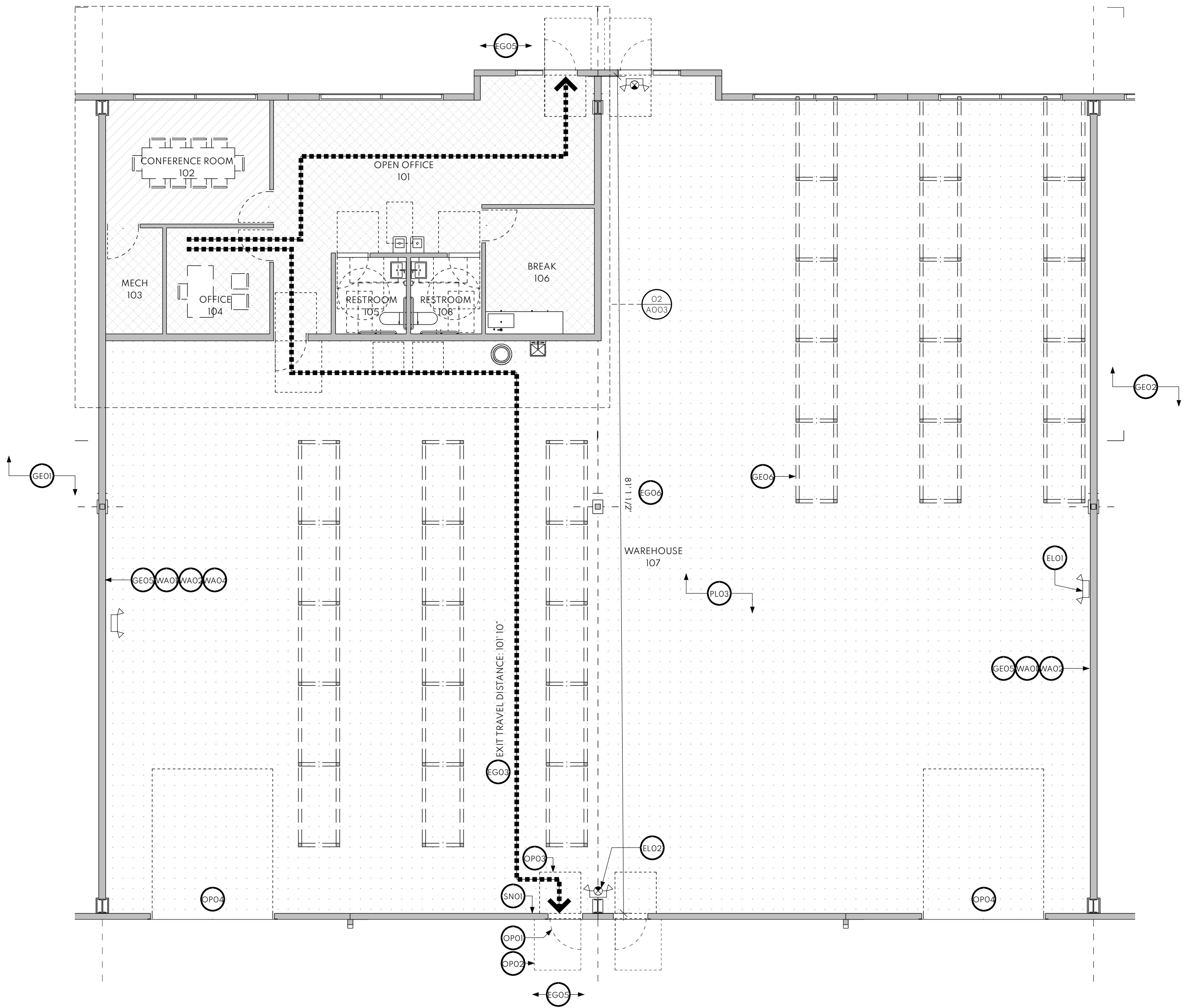
OCCUPANT LOAD TABULATION:

| PLAN COLOR | AREA | OCCUPANT LOAD FACTOR PER TABLE 1004.5 | FUNCTION OF SPACE PER TABLE 1004.5 | OCCUPANCY RATE PER TABLE 7.03.1.2 | USE DESCRIPTION PER TABLE 7.03.1.2 | # | OCCUPANTS | |
|---------------------|----------|---------------------------------------|------------------------------------|-----------------------------------|---|---|-----------|----|
| | 6,510 SF | 500 GROSS | WAREHOUSE | 500 | STORAGE USE IN OTHER THAN STORAGE OR MERCANTILE OCCUPANCIES | = | 14 | |
| | 194 SF | 15 NET | UNCONCENTRATED (TABLES AND CHAIRS) | 15 NET | LESS CONCENTRATED USE, WITHOUT FIXED SEATING | = | 13 | |
| | 820 SF | 150 GROSS | BUSINESS AREAS | 150 GROSS | BUSINESS AREAS | = | 6 | |
| TOTAL OCCUPANT LOAD | | | | | | | | 33 |

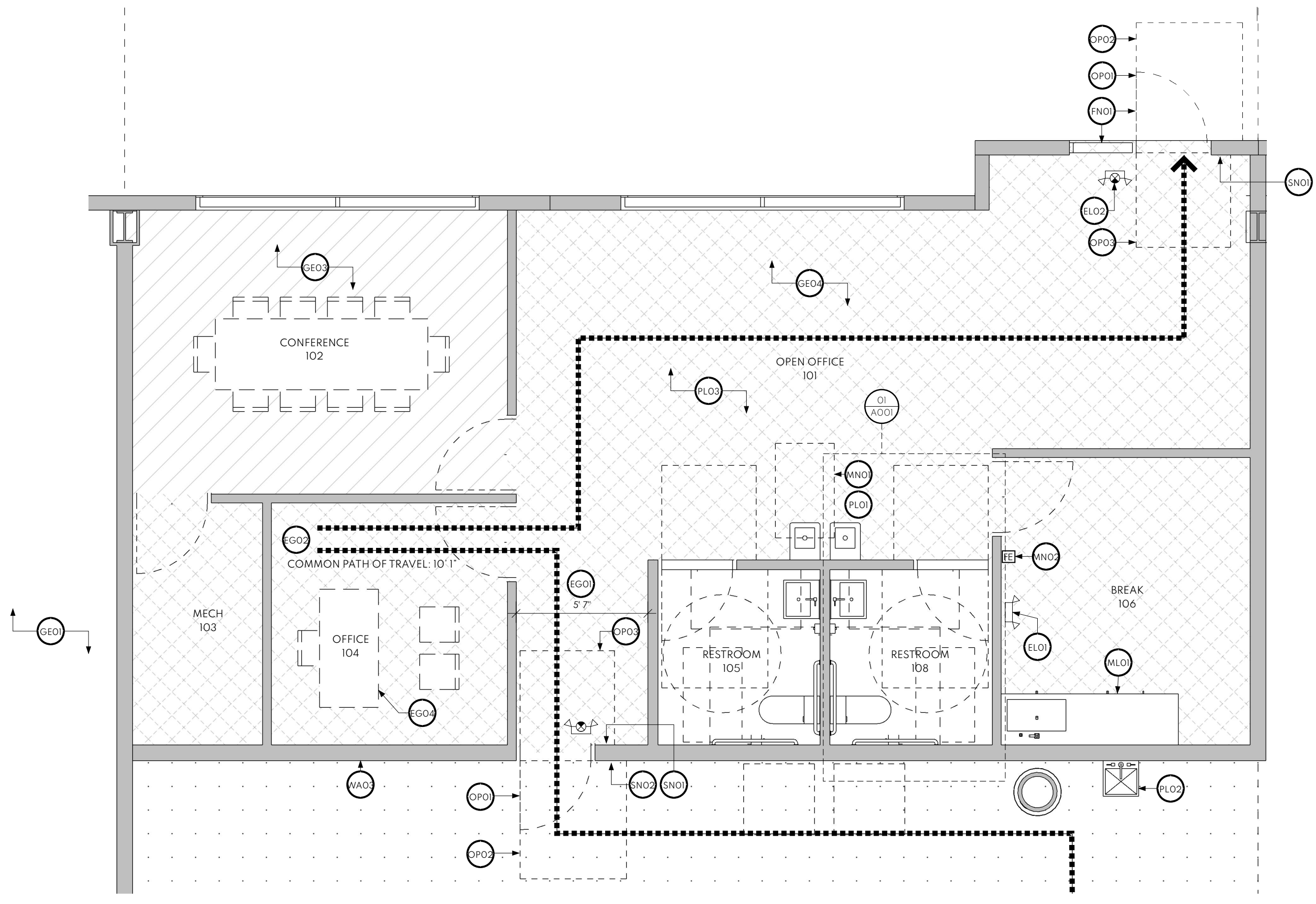
* PER FBCB 303.1.1
 A ROOM OR SPACE USED FOR ASSEMBLY PURPOSES THAT IS LESS THAN 750 SQUARE FEET (70 M2) IN AREA AND ACCESSORY TO ANOTHER OCCUPANCY SHALL BE CLASSIFIED AS A GROUP B OCCUPANCY OR AS PART OF THAT OCCUPANCY.

PLUMBING FIXTURES REQUIRED:

| OCCUPANCY CLASSIFICATION | MIN. FIXTURES PER OCCUPANCY | CLASSIFICATION DESCRIPTION PER FBCB TABLE 403.1 | MINIMUM NUMBER OF REQUIRED PLUMBING FIXTURES PER FBCB TABLE 403.1 | | | | | | | | | | |
|----------------------------------|-----------------------------|--|---|----------|-------------|----------|--------------------|----------|--------------|----------|--|--|--|
| | | | WATER CLOSETS | | LAVATORIES | | DRINKING FOUNTAINS | | SERVICE SINK | | | | |
| | | | DESCRIPTION | REQUIRED | DESCRIPTION | REQUIRED | DESCRIPTION | REQUIRED | DESCRIPTION | REQUIRED | | | |
| STORAGE (S-1) | 34 | STRUCTURES FOR THE STORAGE OF GOODS, WAREHOUSES, STOREHOUSE AND FREIGHT DEPOTS, LOW AND MODERATE HAZARD. | 1 PER 100 | 34/100 | 1 PER 100 | 34/100 | 1 PER 1,000 | 34/1,000 | X | | | | |
| TOTAL PLUMBING FIXTURES REQUIRED | | | | 1 | | 1 | | 1 | | 1 | | | |
| PLUMBING FIXTURES PROVIDED | | | | 2 | | 2 | | 1 | | 1 | | | |



01 LIFE SAFETY PLANS
SCALE: 1/8" = 1' - 0"

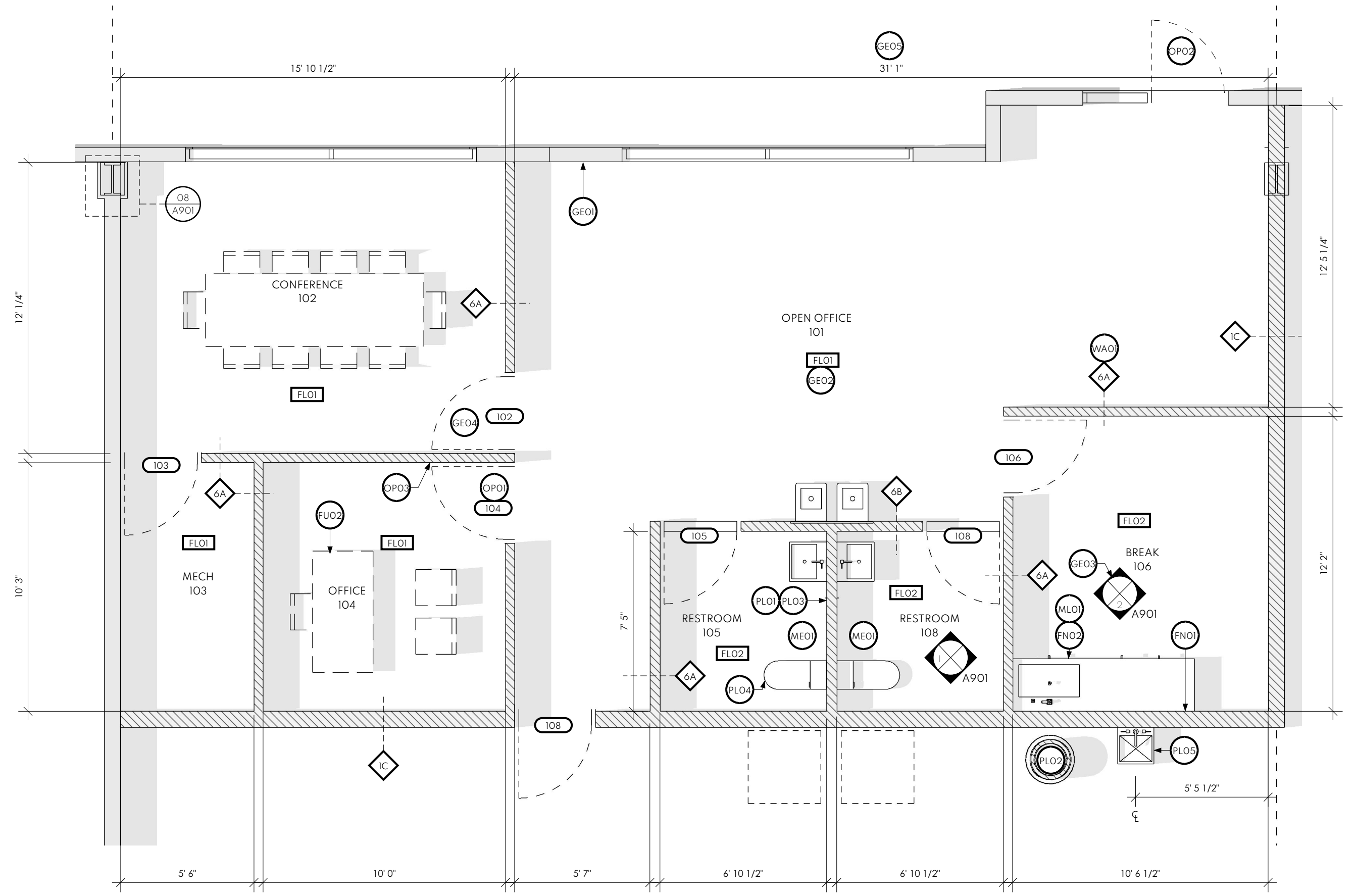
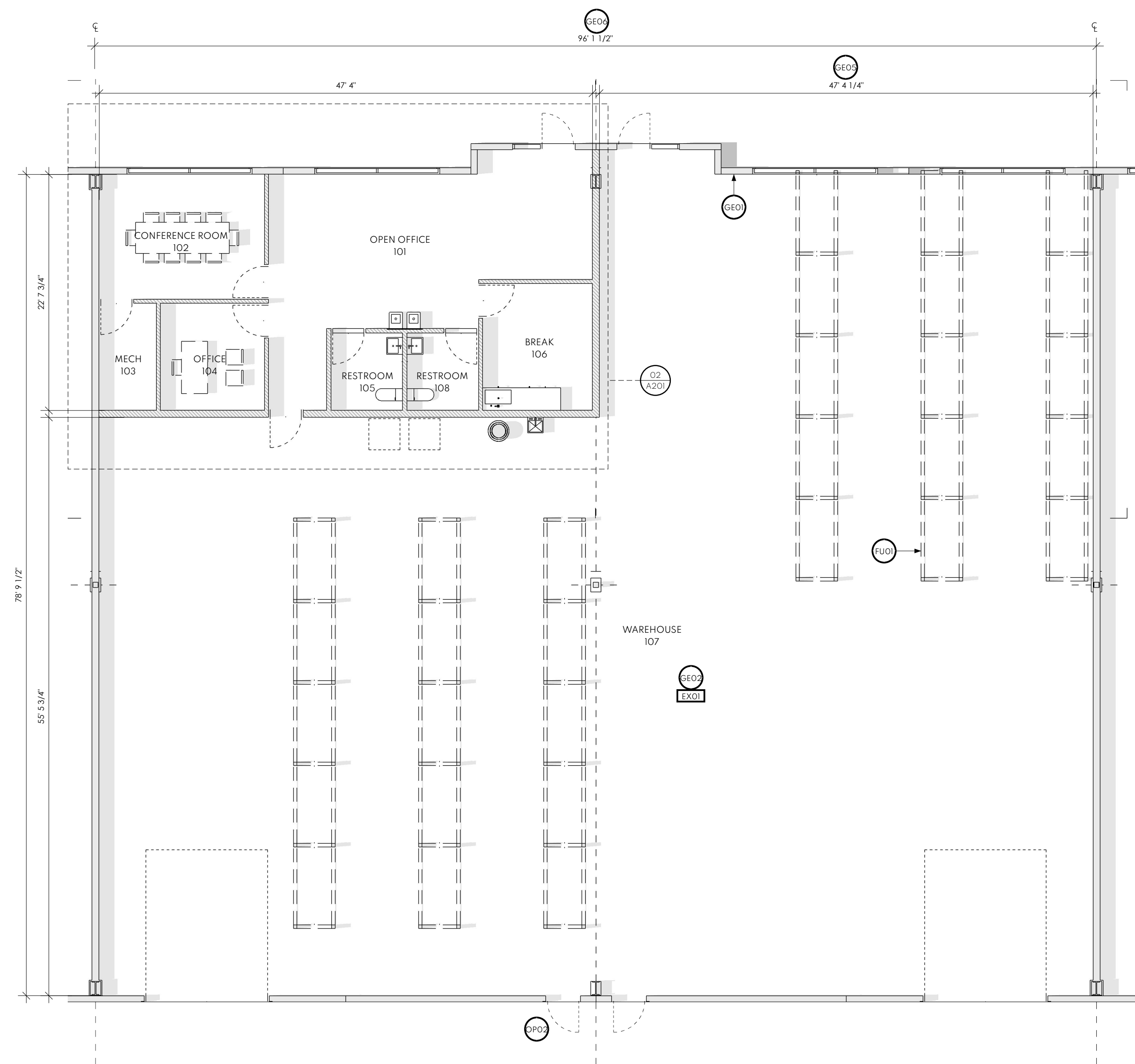


02 LIFE SAFETY PLANS
SCALE: 1/4" = 1' - 0"

TO THE BEST OF THE ARCHITECT'S KNOWLEDGE, THESE PLANS AND SPECIFICATIONS COMPLY WITH THE APPLICABLE MINIMUM BUILDING CODES AND THE APPLICABLE FIRE SAFETY STANDARDS AS DETERMINED BY THE LOCAL AUTHORITY IN ACCORDANCE WITH THIS SECTION AND CHAPTER 633, FLORIDA STATUTES. ALL REPORTS, SPECIFICATIONS, COMPUTER FILES, FIELD DATA, AND OTHER DOCUMENTATION PREPARED BY ZINN ARCHITECTURE AND INTERIORS, INC. (ZAI) AS INSTRUMENTS OF SERVICE SHALL REMAIN THE PROPERTY OF ZAI. ZAI SHALL RETAIN ALL COMMON LAW, STATUTORY AND OTHER RESERVED RIGHTS, INCLUDING THE COPYRIGHT THEREON. THIS DRAWING SHALL NEVER BE REPRODUCED IN WHOLE OR IN PART WITHOUT THE EXPRESS WRITTEN PERMISSION OF ZAI.

- GENERAL**
- GE01 GRAY FILL INDICATES EXISTING ASSEMBLIES AND ELEMENTS
 - GE02 SPEC REFERENCE: SEE FINISH AND FIXTURE SCHEDULES FOR MORE INFORMATION
 - GE03 SEE REFERENCED INTERIOR ELEVATIONS FOR ADDITIONAL DIMENSIONS AND SPECIFICATIONS
 - GE04 DIMENSIONS AT DOORS AND WINDOWS ARE TO THE CENTERLINE OF ROUGH OPENING. UN-DIMENSIONED DOORS ADJACENT TO INSIDE CORNERS SHALL BE LOCATED WITH THE CASING TIGHT TO THE ADJACENT CORNER FINISH. TYP. REFER TO OPENING ELEVATIONS FOR SIZES AND CASING CONDITIONS
 - GE05 DIMENSIONS PROVIDED ARE TO THE OUTSIDE FINISHED SURFACE UNLESS OTHERWISE NOTED
 - GE06 VERIFY ALL DIMENSIONS IN FIELD AND NOTIFY ARCHITECT WHERE FIELD CONDITIONS DIFFER FROM THE DIMENSIONS PROVIDED
- FINISHES**
- FN01 BACKSPASH TO MATCH COUNTERTOP MATERIAL
 - FN02 EXTEND FLOOR FINISH BENEATH MILLWORK (NOT SHOWN)
- FURNITURE**
- FU01 LOW RACK STORAGE LESS THAN 12 FEET AFF
 - FU02 FURNITURE BY TENANT, TYP.

- MECHANICAL**
- ME01 (ABOVE) RESTROOM EXHAUST VENT
- MILLWORK**
- ML01 BUILT-IN MILLWORK BY OWNER; FINISHES AND ARRANGEMENT TO BE INDICATED BY OWNER DURING SHOP DRAWING REVIEW - SEE INTERIOR ELEVATIONS FOR MORE INFORMATION
- OPENINGS**
- OP01 DOOR OR WINDOW REFERENCE: SEE OPENING ELEVATIONS FOR MORE INFO, TYP.
 - OP02 EXISTING DOOR OR WINDOW, TYP. U. N. O.
 - OP03 PROVIDE DOOR STOPS AT ALL DOORS WHOSE SWING INTERSECTS ADJACENT FINISHED SURFACES - TYP.
- PLUMBING AND PLUMBING FIXTURES**
- PL01 NEW PLUMBING WALLS TO BE CONSTRUCTED OF 2X6 (MIN) STUDS AND CBB OR MRGWB, TYP.
 - PL02 WATER HEATER PER PLUMBING ENGINEER OR SUBCONTRACTOR
 - PL03 NEW PLUMBING VENT PER PLUMBING ENGINEER OR SUBCONTRACTOR
 - PL04 PLUMBING FIXTURE - SEE F&F SCHEDULE OR PLUMBING PLANS FOR MORE INFORMATION
 - PL05 SERVICE SINK
- WALLS, COLUMNS, AND PARTITIONS**
- WA01 PARTITION TYPE: SEE DETAIL SHEETS FOR ASSEMBLY INFORMATION



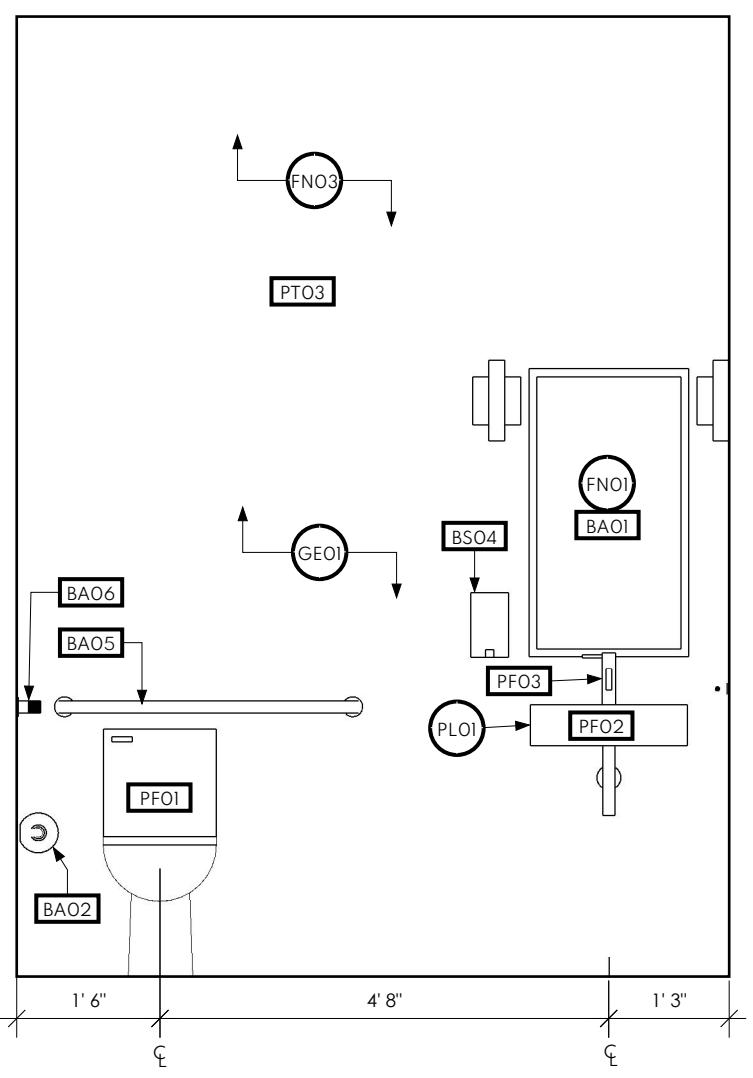
TO THE BEST OF THE ARCHITECTS KNOWLEDGE, THESE PLANS AND SPECIFICATIONS COMPLY WITH THE APPLICABLE MINIMUM BUILDING CODES AND THE APPLICABLE FIRE SAFETY STANDARDS AS DETERMINED BY THE LOCAL AUTHORITY IN ACCORDANCE WITH THIS SECTION AND CHAPTER 633, FLORIDA STATUTES. ALL REPORTS, SPECIFICATIONS, COMPUTER FILES, FIELD DATA, AND OTHER DOCUMENTATION PREPARED BY ZINN ARCHITECTURE AND INTERIORS, INC. (ZAI) AS INSTRUMENTS OF SERVICE SHALL REMAIN THE PROPERTY OF ZAI. ZAI SHALL RETAIN ALL COMMON LAW, STATUTORY AND OTHER RESERVED RIGHTS, INCLUDING THE COPYRIGHT THEREON. THIS DRAWING SHALL NEVER BE REPRODUCED IN WHOLE OR IN PART WITHOUT THE EXPRESS WRITTEN PERMISSION OF ZAI.

| REFERENCE TAG | DESCRIPTION | WIDTH | HEIGHT | LEAF | | | | FRAME | | | | | TRIM | | HARDWARE GROUP | COMMENT | |
|---------------|----------------------------|-------|--------|-----------|------|---------------|--------|-------|----------|--------|---------|---------|-----------|----------|----------------|---------|----------|
| | | | | THICKNESS | TYPE | MATERIAL | FINISH | TYPE | MATERIAL | FINISH | HEAD | JAMB | THRESHOLD | INTERIOR | | | EXTERIOR |
| 102 | INTERIOR SINGLE SWING DOOR | 3'-0" | 6'-8" | 1 3/8" | B | SOLID CORE WD | PT02 | 1 | HM | PT03 | 07/A801 | 07/A801 | - | - | - | 2 | |
| 103 | INTERIOR SINGLE SWING DOOR | 3'-0" | 6'-8" | 1 3/8" | B | SOLID CORE WD | PT02 | 1 | HM | PT05 | 07/A801 | 07/A801 | - | - | - | 3 | |
| 104 | INTERIOR SINGLE SWING DOOR | 3'-0" | 6'-8" | 1 3/8" | B | SOLID CORE WD | PT02 | 1 | HM | PT06 | 07/A801 | 07/A801 | - | - | - | 4 | |
| 105 | INTERIOR SINGLE SWING DOOR | 3'-0" | 6'-8" | 1 3/8" | B | SOLID CORE WD | PT02 | 1 | HM | PT07 | 07/A801 | 07/A801 | - | - | - | 1 | |
| 106 | INTERIOR SINGLE SWING DOOR | 3'-0" | 6'-8" | 1 3/8" | B | SOLID CORE WD | PT02 | 1 | HM | PT08 | 07/A801 | 07/A801 | - | - | - | 1 | |
| 108 | INTERIOR SINGLE SWING DOOR | 3'-0" | 6'-8" | 1 3/8" | B | SOLID CORE WD | PT02 | 1 | HM | PT09 | 07/A801 | 07/A801 | - | - | - | 2 | |

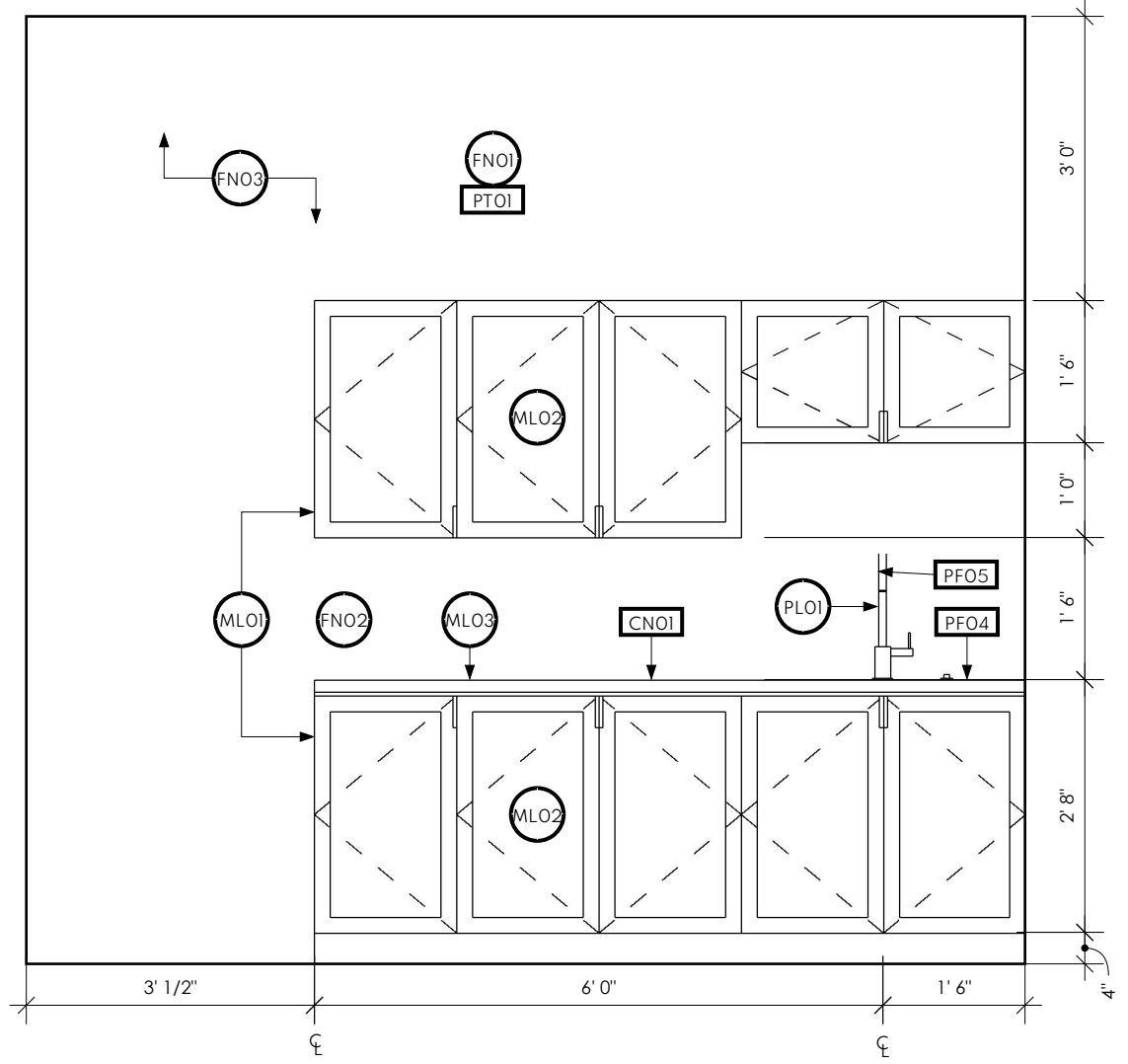
NOTES:
 1. THE EXTERIOR SIDE OF AN INTERIOR DOOR REFERENCES THE SIDE OF THE DOOR UPON APPROACH FROM THE FRONT ENTRY.
 2. SOLID CORE WOOD DOOR VENEER SPECIES, STAIN, AND FINISH TO BE SELECTED BY OWNER FROM SELECTED MANUFACTURER'S STANDARD OPTIONS DURING SUBMITTAL REVIEW.

| HARDWARE GROUP | PRIVACY | PASSAGE | CLOSET | OFFICE | HINGES: (3) PER DOOR |
|----------------|--|-----------------|-------------------------------|---------------------------------------|----------------------|
| | INNER: THUMB LOCK OUTER: TOOL RELEASE | OPEN BOTH SIDES | INNER: NO LOCK OUTER: OPEN | INNER: ALWAYS OPEN OUTER: KEY LOCK | |
| 1 | X | | | | X |
| 2 | | X | | | X |
| 3 | | | X | | X |
| 4 | | | | X | X |

NOTES:
 1. FINISH/STYLE TBD BY OWNER PER MANUF STANDARD FINISHES DURING SUBMITTAL REVIEW



01 INTERIOR ELEV - RESTROOM (OPP SIM.)
SCALE: 1/2" = 1'-0"



02 INTERIOR ELEV - BREAK (OPP SIM.)
SCALE: 1/2" = 1'-0"

- GENERAL**
- GE01 SEE ACCESSIBILITY DRAWINGS ON INDEX SHEET FOR MOUNTING HEIGHTS AND CLEARANCES @ ALL ACCESSIBLE FEATURES, TYP.
- FINISHES**
- FN01 SEE F&F SCHEDULE FOR MORE INFORMATION PER REFERENCED SPEC TAG
 - FN02 BACKSPLASH TO MATCH COUNTERTOP
 - FN03 GYPSUM WALLBOARD - SEE FRAMING PLANS FOR WALL/PARTITION TYPE REFERENCES AND LAYOUT DIMENSIONS. USE MRGWB IN ALL DAMP LOCATIONS AND WITHIN 24" OF WATER CLOSET. PRIME AND PAINT PER FINISH SCHEDULE, TYP.
- MILLWORK**
- MLO1 BUILT-IN MILLWORK: FINISHES AND ARRANGEMENT TO BE INDICATED BY OWNER DURING SHOP DRAWING REVIEW - SEE PLANS FOR MORE INFORMATION
 - MLO2 PROVIDE ADJUSTABLE SHELVES ON METAL GROMMETS IN SUFFICIENT QUANTITY FOR 18 IN O.C. MAX. VERTICAL SPACING, TYP.
 - MLO3 NEW COUNTERTOP. SEE REFERENCED TAG ON F&F SCHEDULE FOR MORE INFO, TYP.
- PLUMBING AND PLUMBING FIXTURES**
- PFO1 NEW PLUMBING FIXTURE - SEE PLUMBING DRAWINGS FOR SPEC AND INFO, TYP.

| REF | DESCRIPTION | LOCATIONS | MANUFACTURER | MODEL | COLOR/MATERIAL | FINISH | COST/RATE * | NOTE |
|------|-------------------------|--------------------|------------------|--------|----------------|-----------|-------------|---|
| FL01 | FLOOR FINISH | 101, 102, 103, 104 | TBD | TBD | TBD | TBD | TBD | TO BE SELECTED BY OWNER FROM SELECTED MANUFACTURER'S STANDARD OPTIONS DURING SUBMITTAL REVIEW |
| FL02 | FLOOR FINISH | 105, 106, 108 | TBD | TBD | TBD | TBD | TBD | TO BE SELECTED BY OWNER FROM SELECTED MANUFACTURER'S STANDARD OPTIONS DURING SUBMITTAL REVIEW |
| EX01 | EXISTING CONCRETE | 107 | NA | NA | NA | NA | | |
| CN01 | PLAM COUNTERTOP | 106 | TBD | TBD | TBD | TBD | TBD | TO BE SELECTED BY OWNER FROM SELECTED MANUFACTURER'S STANDARD OPTIONS DURING SUBMITTAL REVIEW |
| PT01 | INTERIOR WALL PAINT | ALL, U.N.O. | SHERWIN WILLIAMS | SW7006 | EXTRA WHITE | EGGSHELL | | OR SIMILAR |
| PT02 | INTERIOR TRIM PAINT | ALL, U.N.O. | SHERWIN WILLIAMS | SW7006 | EXTRA WHITE | SEMIGLOSS | | OR SIMILAR |
| PT03 | INTERIOR BATHROOM PAINT | 105, 106, 108 | SHERWIN WILLIAMS | SW7006 | EXTRA WHITE | SATIN | | OR SIMILAR |
| PT04 | INTERIOR CEILING PAINT | ALL, U.N.O. | SHERWIN WILLIAMS | SW7006 | EXTRA WHITE | MATTE | | OR SIMILAR |

** QUANTITIES FOR ESTIMATING PURPOSED ONLY. CONTRACTOR TO VERIFY ACTUAL QUANTITIES IN FIELD.
 * COST FOR ESTIMATING PURPOSES ONLY. CONTRACTOR TO PROVIDE ACTUAL BID COST PRIOR TO SIGNING CONTRACT

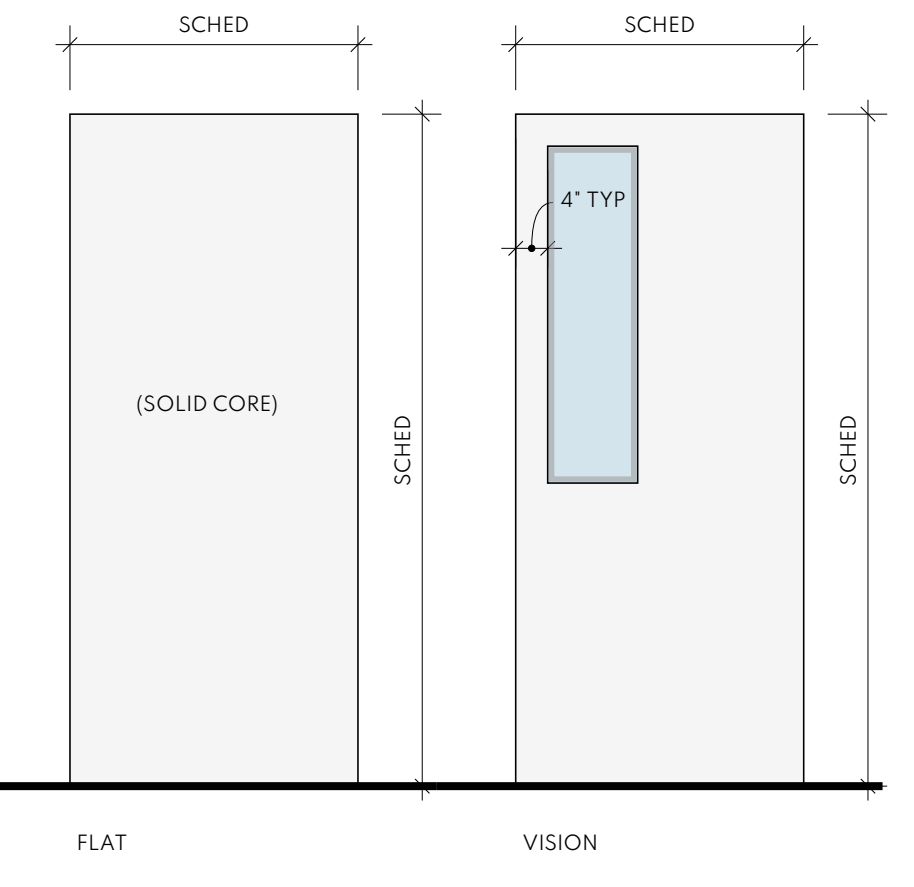
| REF | DESCRIPTION | ROOMS | MANUFACTURER | MODEL | COLOR/MATERIAL | FINISH | COST/RATE * | NOTE |
|------|----------------|----------|--------------|-------|----------------|--------|-------------|---|
| PF01 | TOILET | 105, 108 | TBD | TBD | TBD | TBD | | SEE PLUMBING PLANS FOR MORE INFORMATION |
| PF02 | VANITY SINK | 105, 108 | TBD | TBD | TBD | TBD | | SEE PLUMBING PLANS FOR MORE INFORMATION |
| PF03 | VANITY FAUCET | 105, 108 | TBD | TBD | TBD | TBD | | SEE PLUMBING PLANS FOR MORE INFORMATION |
| PF04 | KITCHEN SINK | 106 | TBD | TBD | TBD | TBD | | SEE PLUMBING PLANS FOR MORE INFORMATION |
| PF05 | KITCHEN FAUCET | 106 | TBD | TBD | TBD | TBD | | SEE PLUMBING PLANS FOR MORE INFORMATION |
| PF06 | UTILITY SINK | 107 | TBD | TBD | TBD | TBD | | SEE PLUMBING PLANS FOR MORE INFORMATION |
| PF07 | UTILITY FAUCET | 107 | TBD | TBD | TBD | TBD | | SEE PLUMBING PLANS FOR MORE INFORMATION |

** QUANTITIES FOR ESTIMATING PURPOSED ONLY. CONTRACTOR TO VERIFY ACTUAL QUANTITIES IN FIELD.
 * COST FOR ESTIMATING PURPOSES ONLY. CONTRACTOR TO PROVIDE ACTUAL BID COST PRIOR TO SIGNING CONTRACT

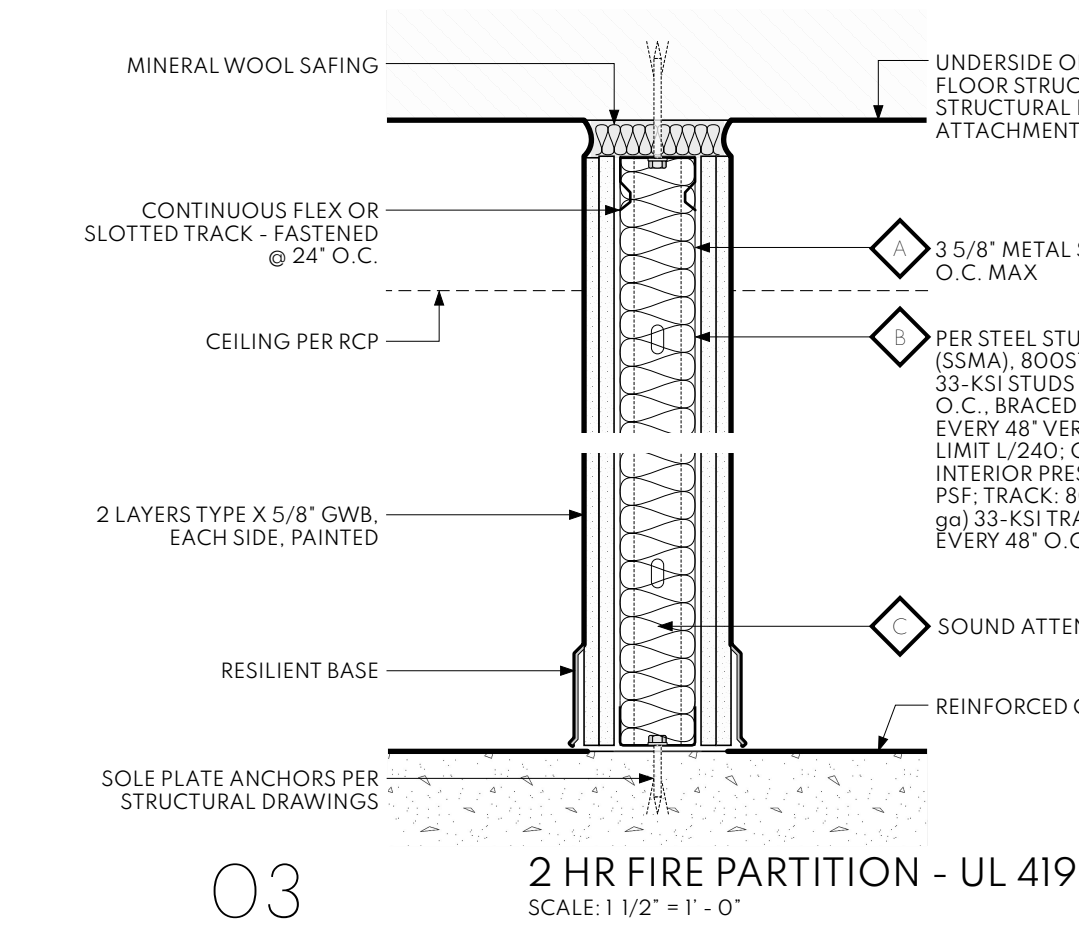
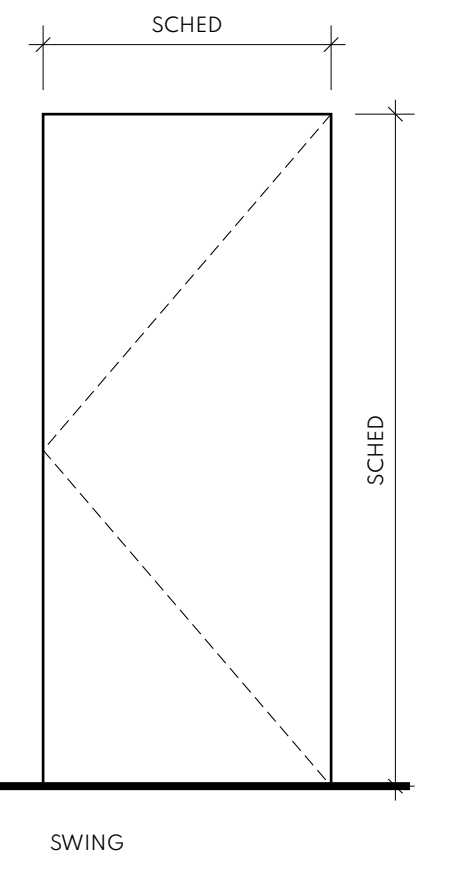
| REF | DESCRIPTION | ROOMS | MANUFACTURER | MODEL | COLOR/MATERIAL | FINISH | COST/RATE * | NOTE |
|------|-----------------------|----------|--------------|-------------|----------------|-----------------|-------------|------------|
| BA01 | MIRROR | 105, 108 | BOBRICK | B-1658 1830 | | STAINLESS STEEL | | OR SIMILAR |
| BA02 | TOILET PAPER HOLDER | 105, 108 | BOBRICK | B-7685 | | STAINLESS STEEL | | OR SIMILAR |
| BA03 | PAPER TOWEL DISPENSER | 105, 108 | BOBRICK | B-262 | | STAINLESS STEEL | | OR SIMILAR |
| BA04 | SOAP DISPENSER | 105, 108 | BOBRICK | B-2111 | | STAINLESS STEEL | | OR SIMILAR |
| BA05 | 36" GRAB BAR | 105, 108 | BOBRICK | B-5806 X 36 | | STAINLESS STEEL | | OR SIMILAR |
| BA06 | 42" GRAB BAR | 105, 108 | BOBRICK | B-5806 X 42 | | STAINLESS STEEL | | OR SIMILAR |

** QUANTITIES FOR ESTIMATING PURPOSED ONLY. CONTRACTOR TO VERIFY ACTUAL QUANTITIES IN FIELD.
 * COST FOR ESTIMATING PURPOSES ONLY. CONTRACTOR TO PROVIDE ACTUAL BID COST PRIOR TO SIGNING CONTRACT

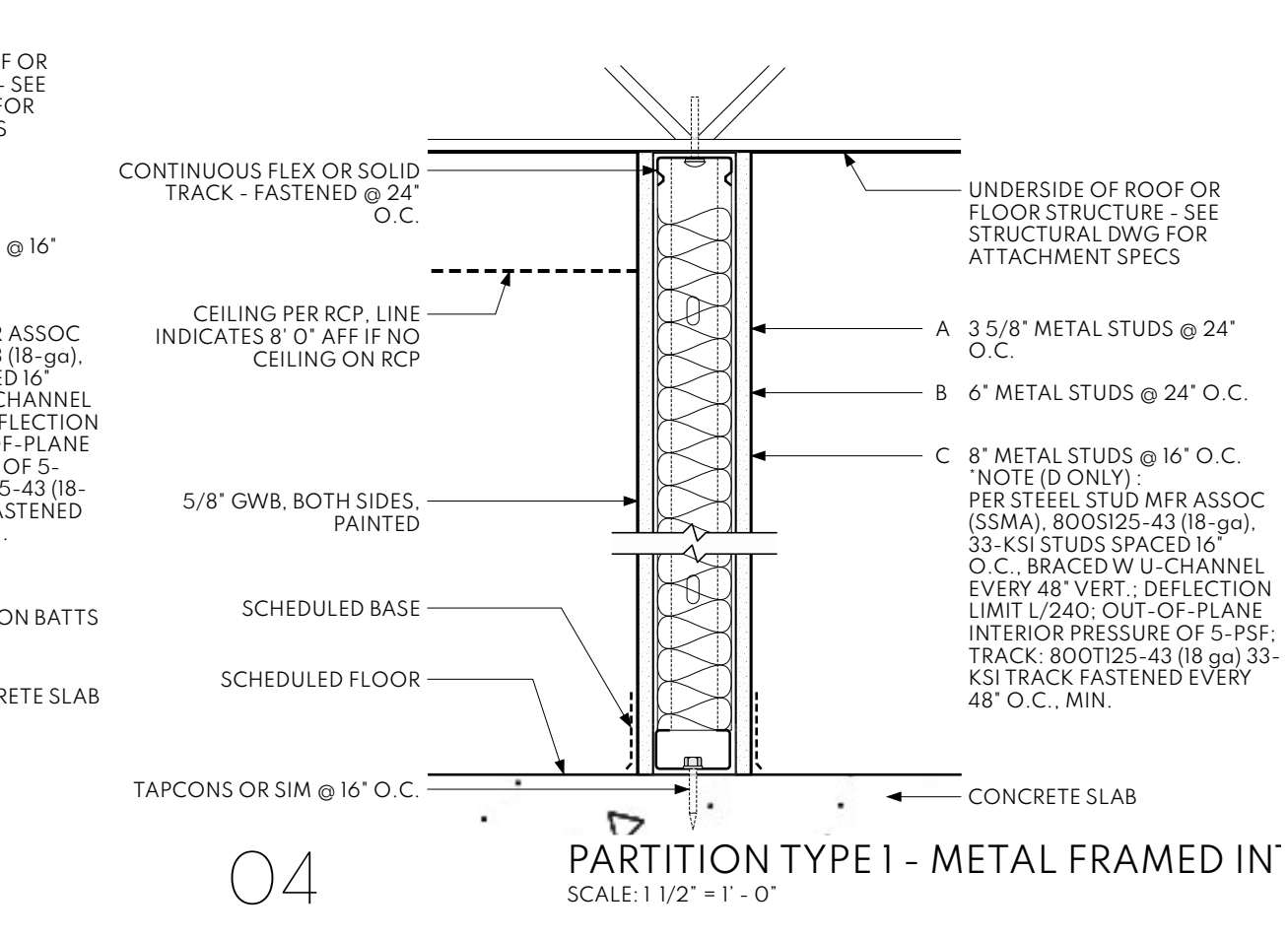
DOOR LEAF TYPES



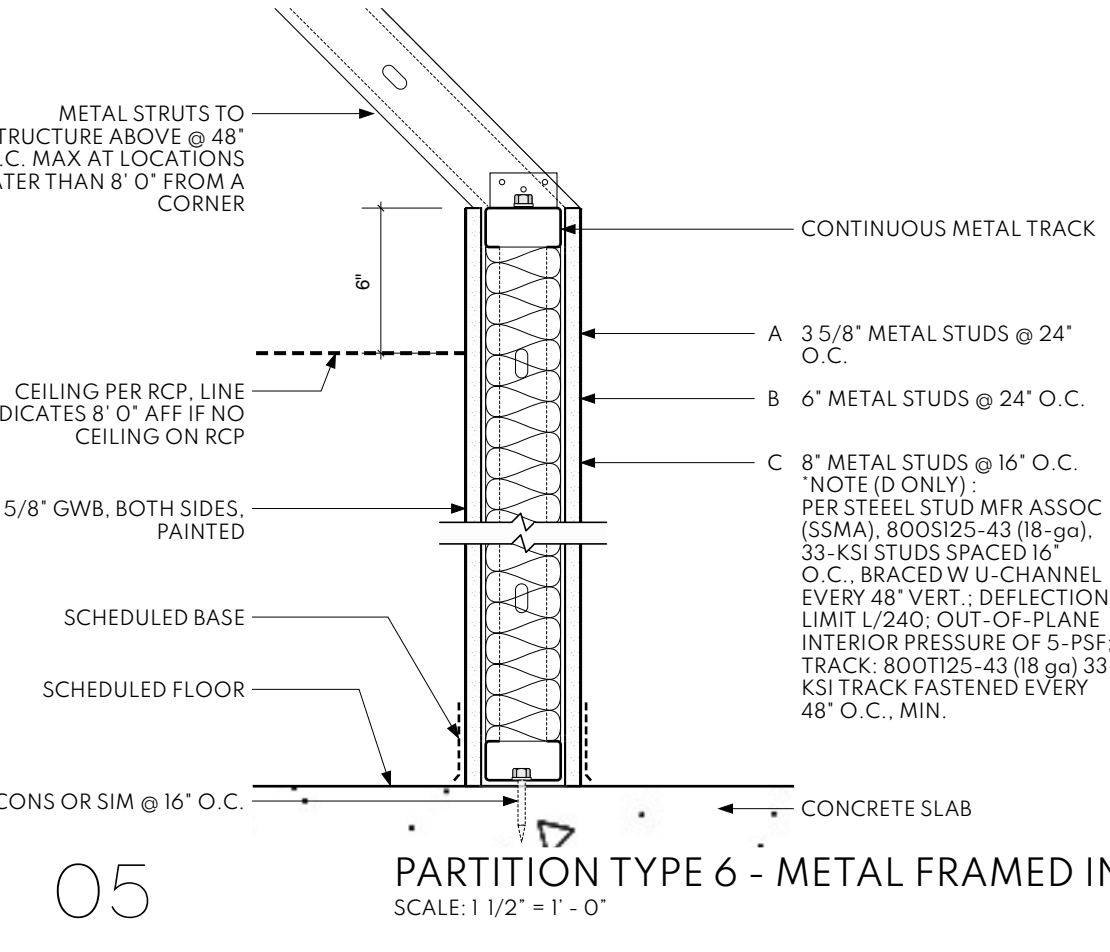
DOOR FRAME TYPES



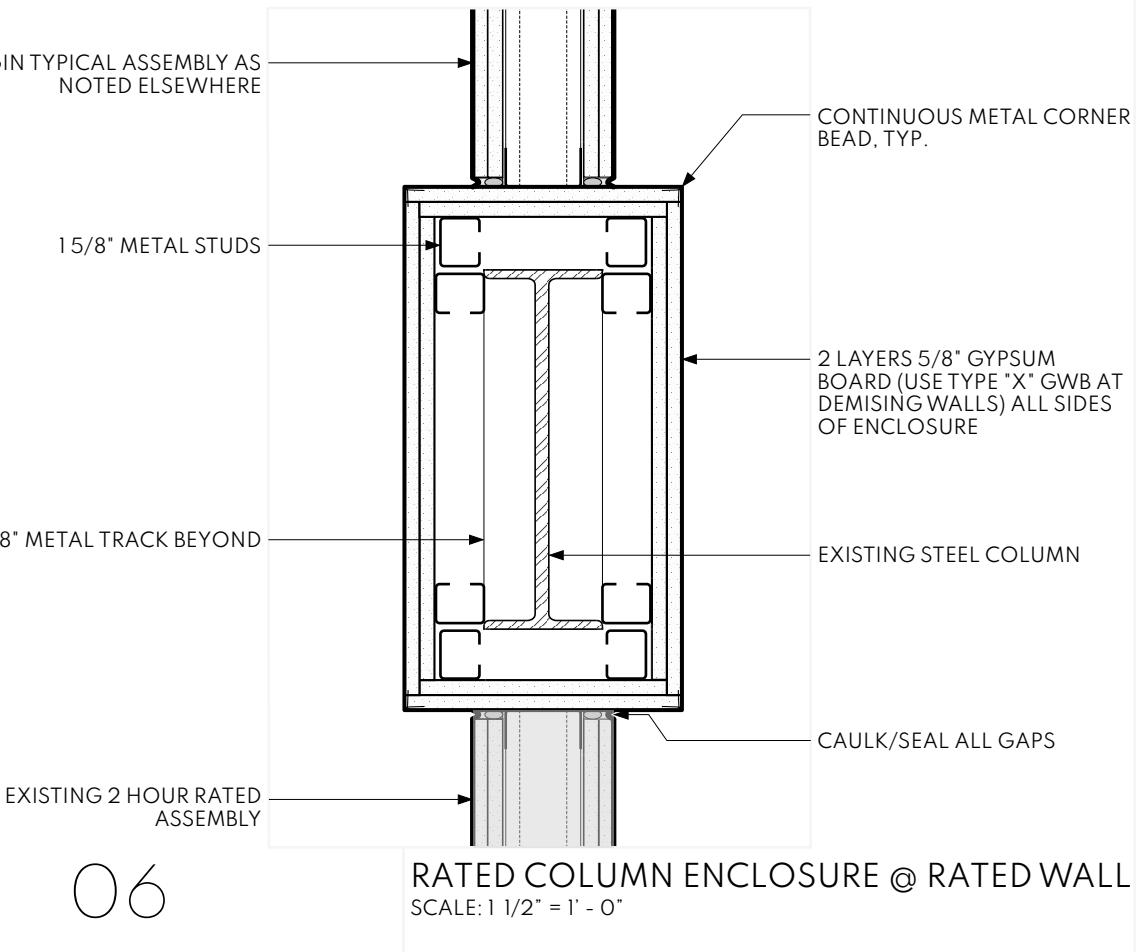
03 2 HR FIRE PARTITION - UL 419
SCALE: 1 1/2" = 1'-0"



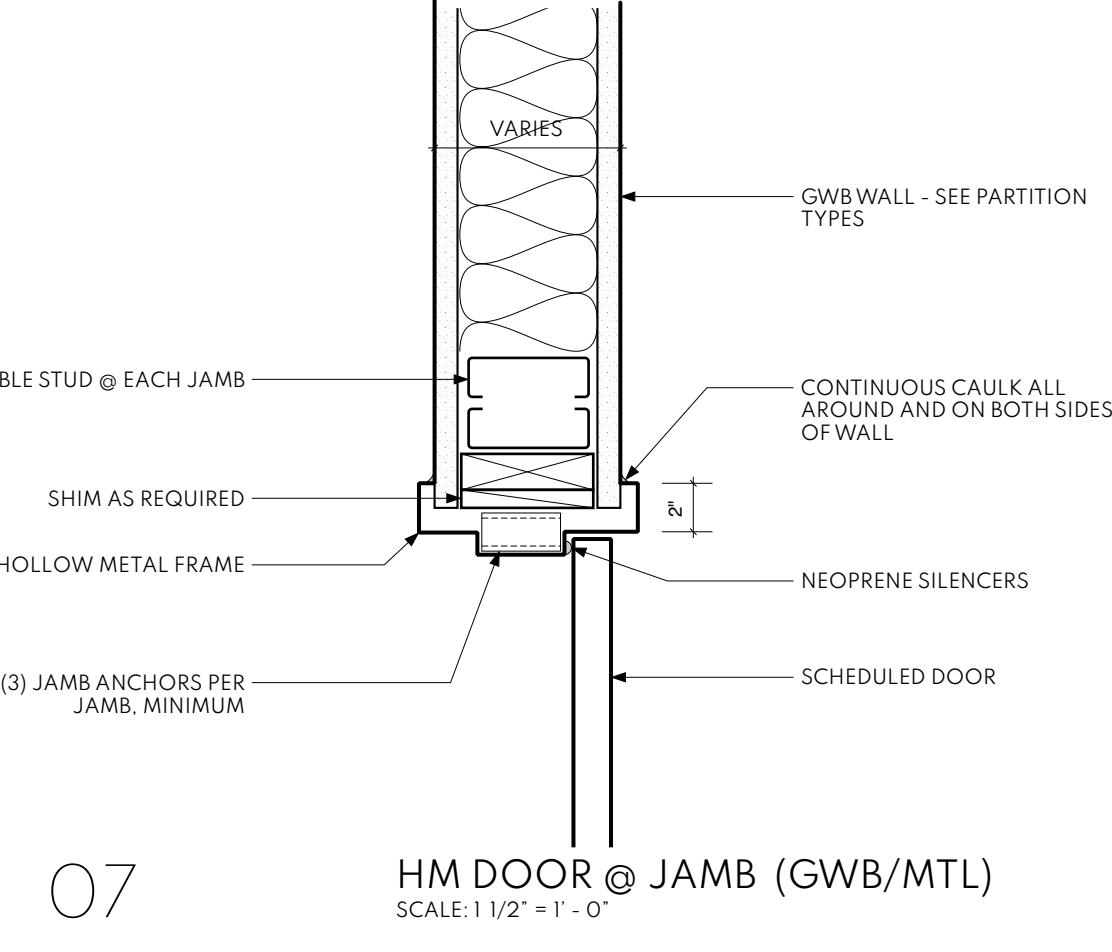
04 PARTITION TYPE 1 - METAL FRAMED IN
SCALE: 1 1/2" = 1'-0"



05 PARTITION TYPE 6 - METAL FRAMED IN
SCALE: 1 1/2" = 1'-0"



06 RATED COLUMN ENCLOSURE @ RATED WALL
SCALE: 1 1/2" = 1'-0"



07 HM DOOR @ JAMB (GWB/MTL)
SCALE: 1 1/2" = 1'-0"

ZINN ARCHITECTURE + INTERIORS
 1022 park street #407
 jacksonville, fl 32204
 904.352.1203
 info@zinn.ca
 ROBERT ZINN
 AR94030
 JAX GREEN PORT JAX 703-4
 CLOSET FACTORY
 10751 ALTA DR. UNITS 703-4
 JACKSONVILLE, FL 32226
 DATE: 2022.03.15
 ISSUE: PERMIT
 DRAWING: SCHEDULES, ELEVATIONS, AND DETAILS
 A901