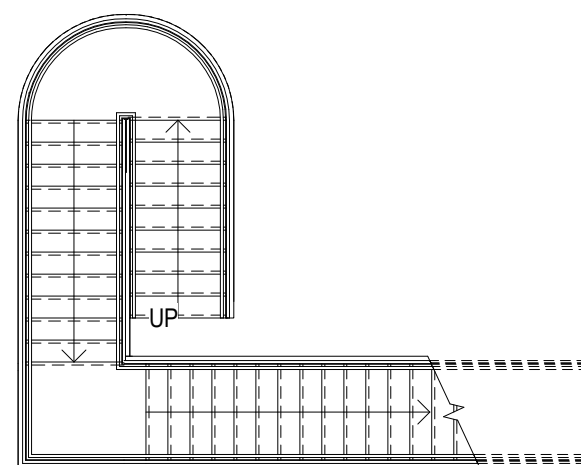


1 LEVEL 2 & 3 FLOOR PLAN
1/8" = 1'-0"



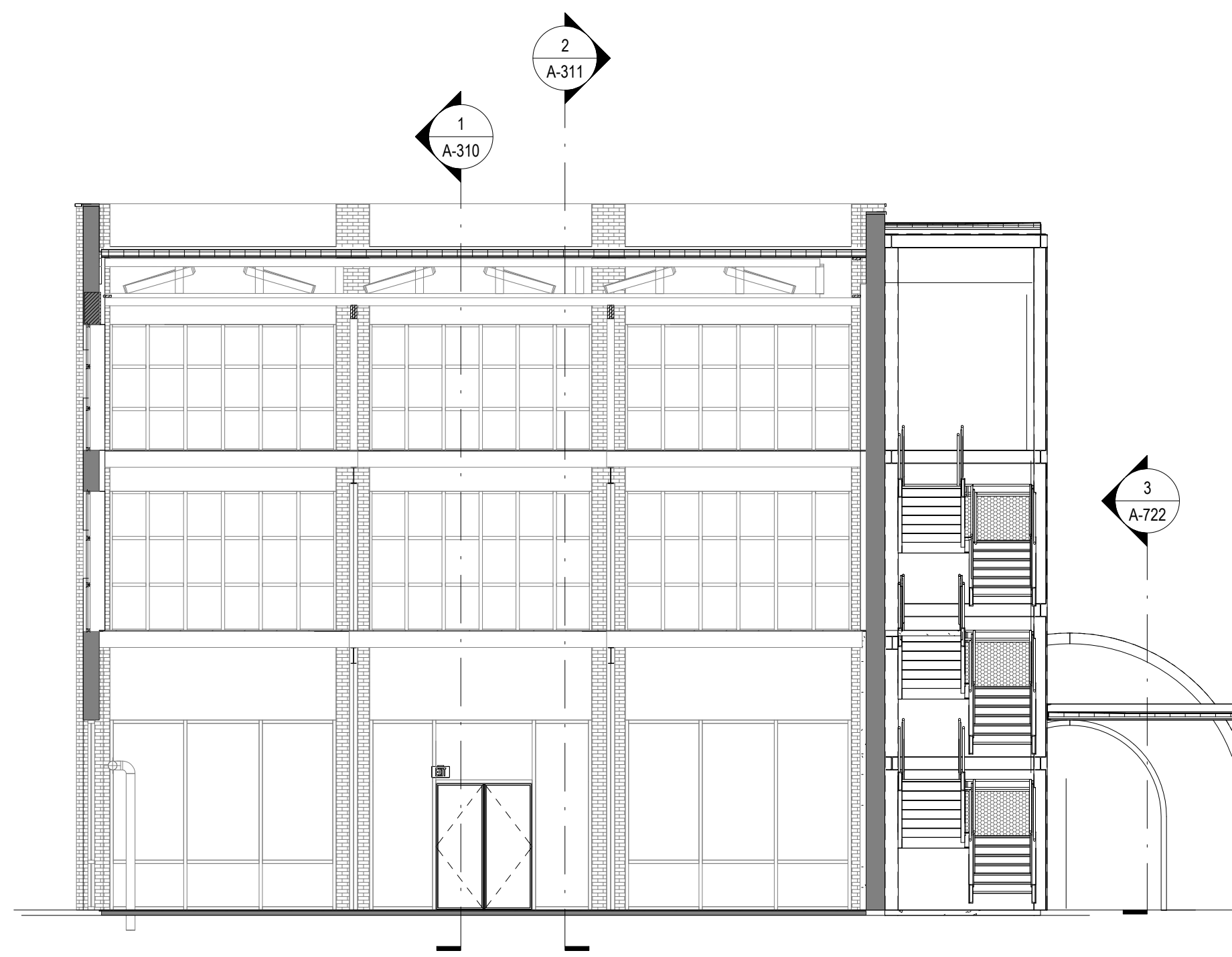
NEW CONDITIONED GSF: 8,586 GSF (NOTE THIS AREA INCLUDES THE EXTERIOR ENCLOSED ELEVATOR AND VESTIBULE, BUT EXCLUDES THE EXTERIOR STAIR)

| KEYNOTES - PLAN | |
|-----------------|--|
| Keynote Number | Keynote Text |
| A53 | STAINLESS STEEL FABRIC SCREEN WITH STAINLESS STEEL FRAME, TYP. BASIS OF DESIGN: SECO SOUTH X-TEND WEB NET. |
| A56 | PAINTED CUSTOM ALUMINUM AWNING WITH ROD TIE BACKS, AS DELEGATED DESIGN. REF. TO STRUCTURE. |
| A57 | PAINTED(TBD) STEEL HANDRAIL & GUARDRAIL |
| A61 | EXPOSED HOOD EXHAUST DUCT, TYP. REF. MECH DWGS. |
| A63 | AWNING CANOPY WITH SIPS PANEL DECKING ON STEEL STRUCTURE |
| A64 | POWDER COATED ALUMINUM PERFORATED SCREEN SYSTEM. |
| A66 | POWDER COATED STEEL ARCHED WIDE FLANGE MEMBER, TYP. |
| A68 | EXISTING STORM WATER SCUPPER & DOWNSPOUT, TO REMAIN |
| A78 | MANUAL SHADE WITH 5% OPENNESS FACTOR, PROVIDE SHADES AT ALL WINDOWS ORIENTED EAST, SOUTH & WEST |
| A79 | PROVIDE LIGHT GAUGE FRAMING AS REQ'D. TO SUPPORT STOREFRONT HEADER TO UNDERSIDE OF METAL DECK |
| A86 | NEW STOREFRONT WINDOW, 2HR FIRE RATED |
| A89 | EXTERIOR PTD METAL GATE WITH PERFORATED STEEL SCREEN INFILL, REF. HOTEL DRAWINGS. |
| A90 | EXTERIOR STEEL WIRE MESH SCREEN, BOD: FABRICOIL BY CASCADE ARCHITECTURAL |
| A108 | CEILING, RE RCP FOR CEILING TYPE & FINISH SCHEDULE |
| A124 | NEW TPO ROOF OVER R25 CONT. RIGID INSULATION OVER EXISTING WOOD DECK, PATCH & REPAIR AS REQ'D. |
| A125 | NEW CMU WALL WITH 7/8" PAINTED STUCCO SYSTEM, O/ FLUID APPLIED WEATHER BARRIER, FILL CMU CELLS W/ CORE-FILL 900 by TAILORED CHEMICAL PRODUCTS, INC. UP TO ROOF LEVEL |
| A137 | EXISTING WOOD TRUSS, PAINT AS SCHEDULED, REF. STRUCTURAL FOR REINFORCING |
| A141 | HORIZONTAL 4"X4" P.T. WOOD SLATS, STAINED & SEALED |
| A144 | PTD STEEL "C" CHANNEL FASCIA |
| A153 | NEW TPO ROOF O/R10 (AVERAGE) RIGID INSULATION TAPERED @ MIN. 1/4" / 12" TOWARD ROOF DRAIN, REF. PLUMBING FOR ROOF DRAIN LOCATIONS. |
| A155 | LIGHT FIXTURE, REF. TO RCP FOR LIGHT FIXTURE SCHEDULE |
| A156 | SEALED CONCRETE FLOOR |
| A158 | NEW RAISED HARD/PINE FLOOR ON 2X4 SLEEPERS RE FINISH SCHEDULE AND DETAILS |
| A216 | PATCH, CLOSE HOLES, AND REPAIR EXISTING CMU WALL TO MAINTAIN 2HR RATING |
| A322 | OSHA LADDER TO CATWALK TO ROOF BULKHEAD |

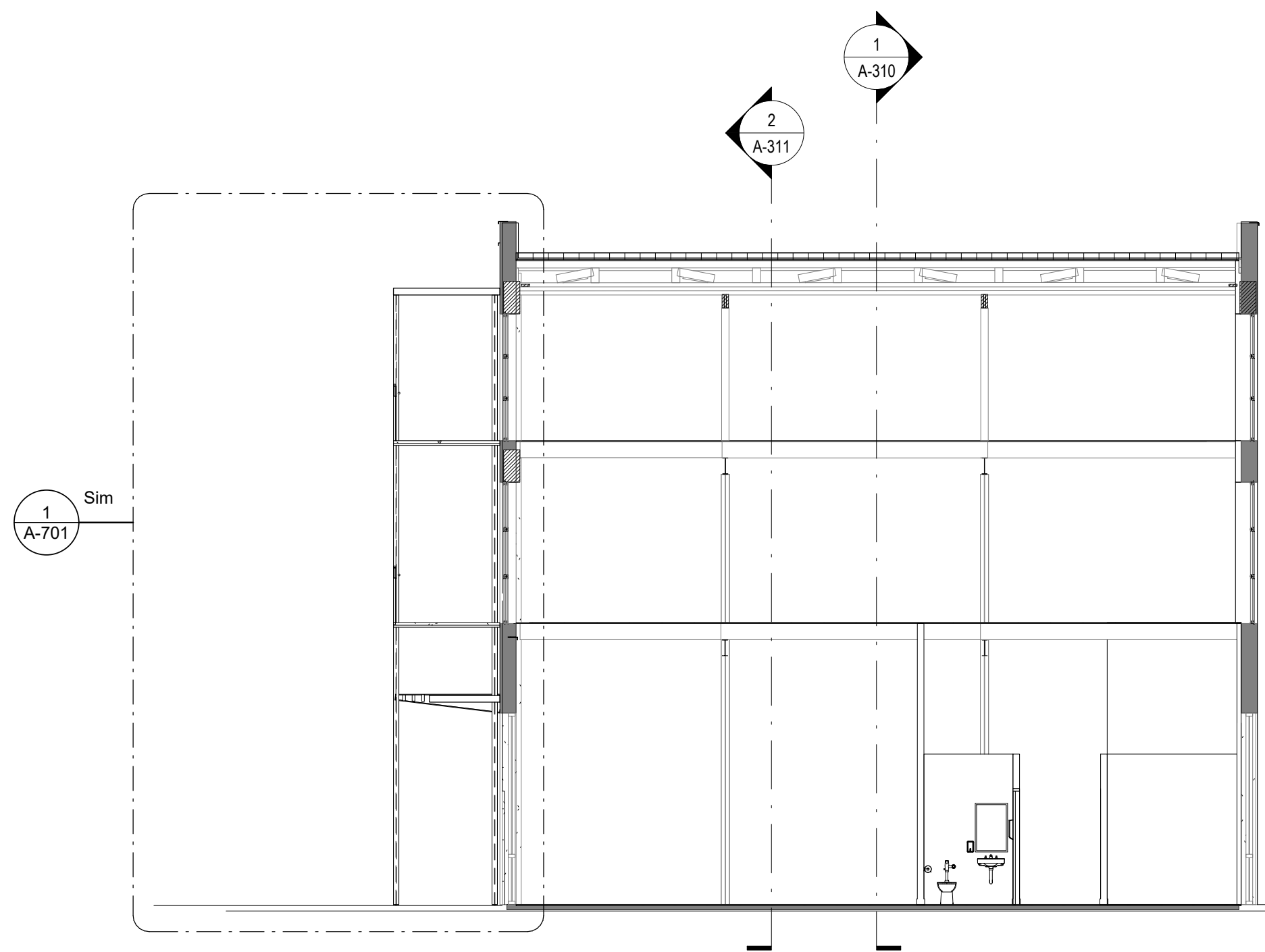
LEVEL 2 FLOOR PLAN

PROJ NO. 1/8" = 1'-0" ARCH E 12.16.22
SCALE FORMAT DATE

A-102



1 EAST/WEST BUILDING SECTION 1
1/8" = 1'-0"



3 EAST/WEST BUILDING SECTION 2
1/8" = 1'-0"



2 NORTH/SOUTH BUILDING SECTION 3
1/8" = 1'-0"

BUILDING SECTIONS

PROJ NO. SCALE FORMAT DATE
1/8" = 1'-0" ARCH E 12.16.22

A-311