

# 79a Grapes House

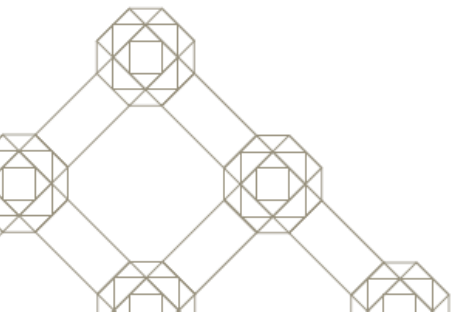
---

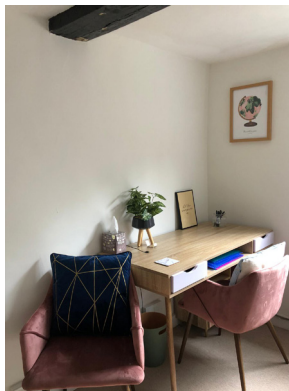
Esher  
KT10 9QA

# Contents



- Page 1 The Space
- Page 2 The Floorplans with Pricing
- Page 3 The Inclusions
- Page 4 More Information
- Page 5 Pricing & Availability
- Page 6 Amenities



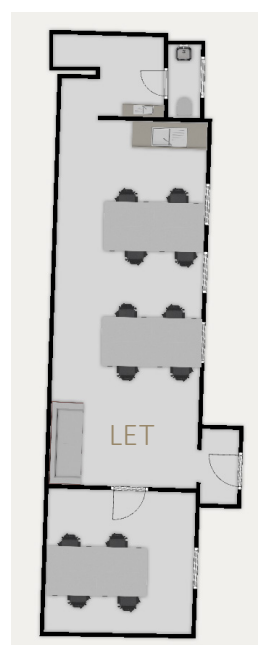
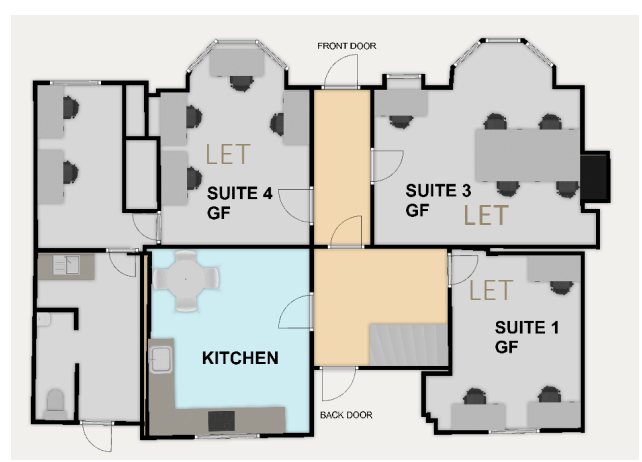


79A  
Grapes House

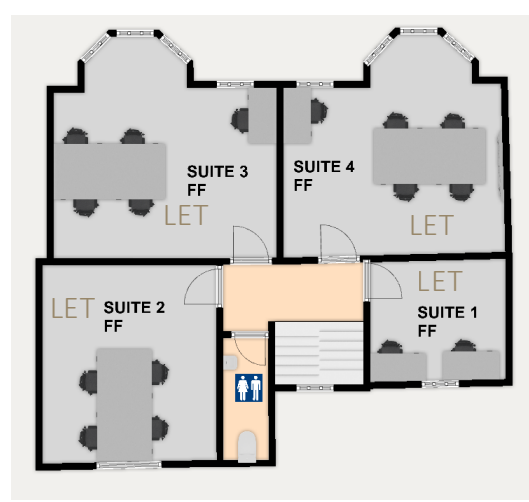


# The Plans

## Ground Floor



## First Floor



## Second Floor



# The Inclusions



## Included in the fees are:

- Business Rates
- Services
- Utilities
- Buildings Insurance & Public Liability

## Other benefits include:

-  Flexible Lease Contracts
-  Flexible Notice
-  24 Hour Access
-  Communal Kitchen
-  Telecom Coded Entry
-  Neutral Interior
-  Prominent Location
-  Communal Cleaning
-  Private Car Parking (subject to office & availability)

# More Information

## Deposit



- A 1 month deposit will be held throughout the duration of the term, returned to the occupier.

## Payment terms



- Our usual payment terms are for rent to be paid monthly in advance.

## Contracts



- Our usual contract term is a 5 month break with a 2 month notice thereafter to keep you flexible throughout the rest of the term. So you can serve notice anytime after your third month.

## On Site Parking



- 79a Grapes House has 7 car parking spaces rented to occupiers on a first come first serve basis at £150 per month.

## Other Car Parking



- 79a Grapes House has 7 car parking spaces rented to occupiers on a first come first serve basis at £150 per month.

## Other Transport



- Esher Train Station is a 15 minute walk away with various bus stations on the High Street directly outside the property.

## WALKING DISTANCE TO

Waitrose  
2 minute walk

Tesco Express  
2 minute walk

Boots Pharmacy  
4 minute walk

Gail's Bakery  
4 minute walk

Cafe Nero  
3 minute walk

Sandown Gym  
10 minute walk

Post Office  
4 minute walk

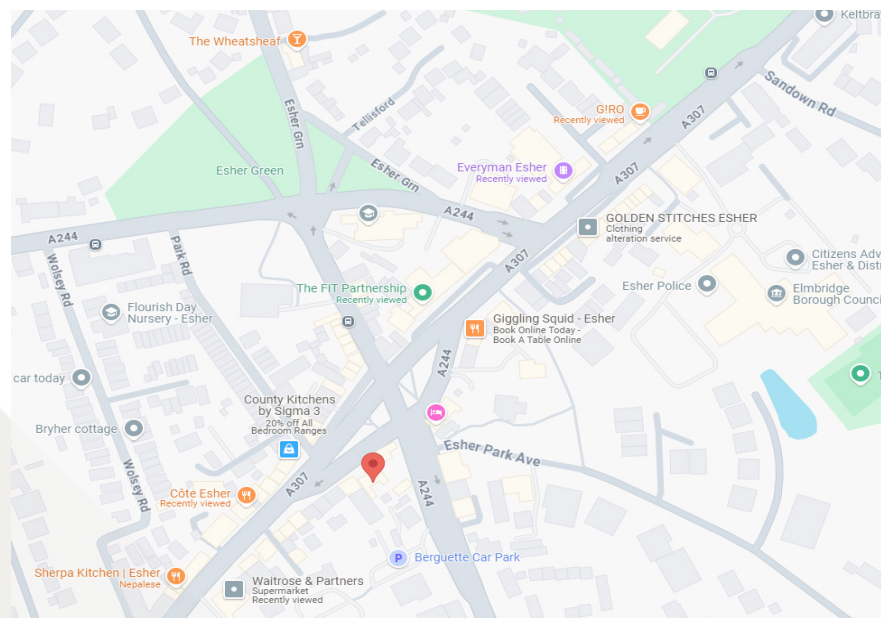
Esquires Coffee  
4 minute walk

GIRO  
5 minute walk

Everyman  
4 minute walk

Cote  
1 minute walk

The FIT Partnership  
2 minute walk



# Amenities

# Nammu Workplace Ltd

---

01372 613 003

[info@nammuworkplace.com](mailto:info@nammuworkplace.com)

[www.nammuworkplace.com](http://www.nammuworkplace.com)