

OFFICE SPACE FOR LEASE

15335 Morrison Street | Sherman Oaks



For more information
please contact:

Todd Wuschnig

Principal
818.933.0301
twuschnig@lee-re.com
DRE #01367230

Stacy Vierheilg-Fraser

Principal
818.933.0313
svierheilg@lee-re.com
DRE #00986794



COMMERCIAL REAL ESTATE SERVICES

Lee & Associates® - LA North/Ventura, Inc. • Corporate ID #01191898
A Member of the Lee & Associates® Group of Companies
15060 Ventura Blvd., Suite 100 • Sherman Oaks, CA 91403
P:818.986.9800 F:818.933.0405 • www.leelanorth.com

AVAILABLE

Suite	Size
140	±676 SF
150	±1,556 SF
237	±824 SF

LEASE RATE

\$2.35/RSF FSG

PARKING

3/1,000 SF Surface Spaces — **FREE PARKING**

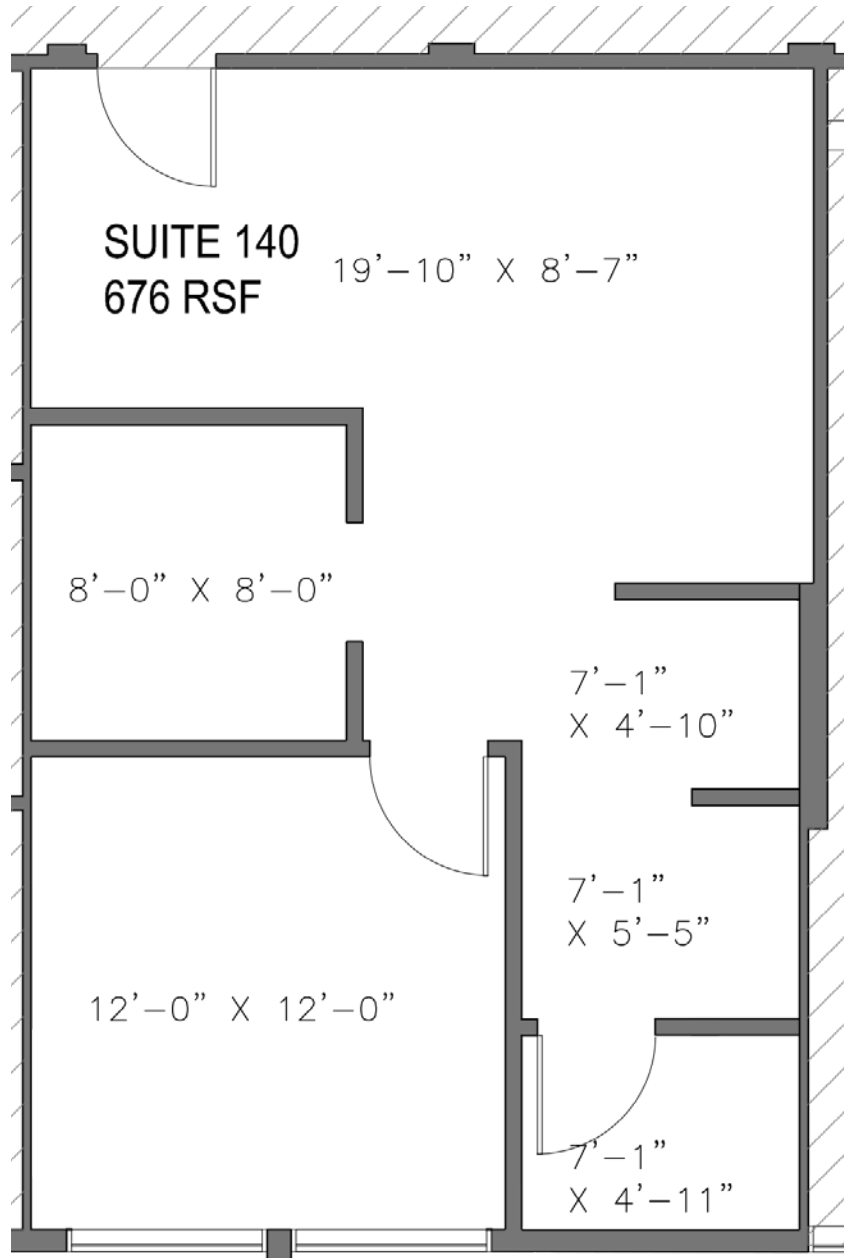
PROPERTY HIGHLIGHTS

- » Free Visitor Parking & Additional Street Parking
- » Hvac Hours: 5am to 10pm; 7 Days a Week
- » New Common Area Renovations
- » On-Site Cafe
- » Newly Remodeled Common Areas
- » Tree-Lined Property
- » Sit Down Lobby
- » Immediate Access to the 101 & 405 Freeways
- » Walking Distance to the Sherman Oaks Galleria

OFFICE SPACE FOR LEASE

15335 Morrison Street | Sherman Oaks

SUITE 140 FLOOR PLAN



NOT TO SCALE

For more information please contact:

Todd Wuschnig

Principal

818.933.0301

twuschnig@lee-re.com

DRE #01367230

Stacy Vierheilig-Fraser

Principal

818.933.0313

svierheilig@lee-re.com

DRE #00986794



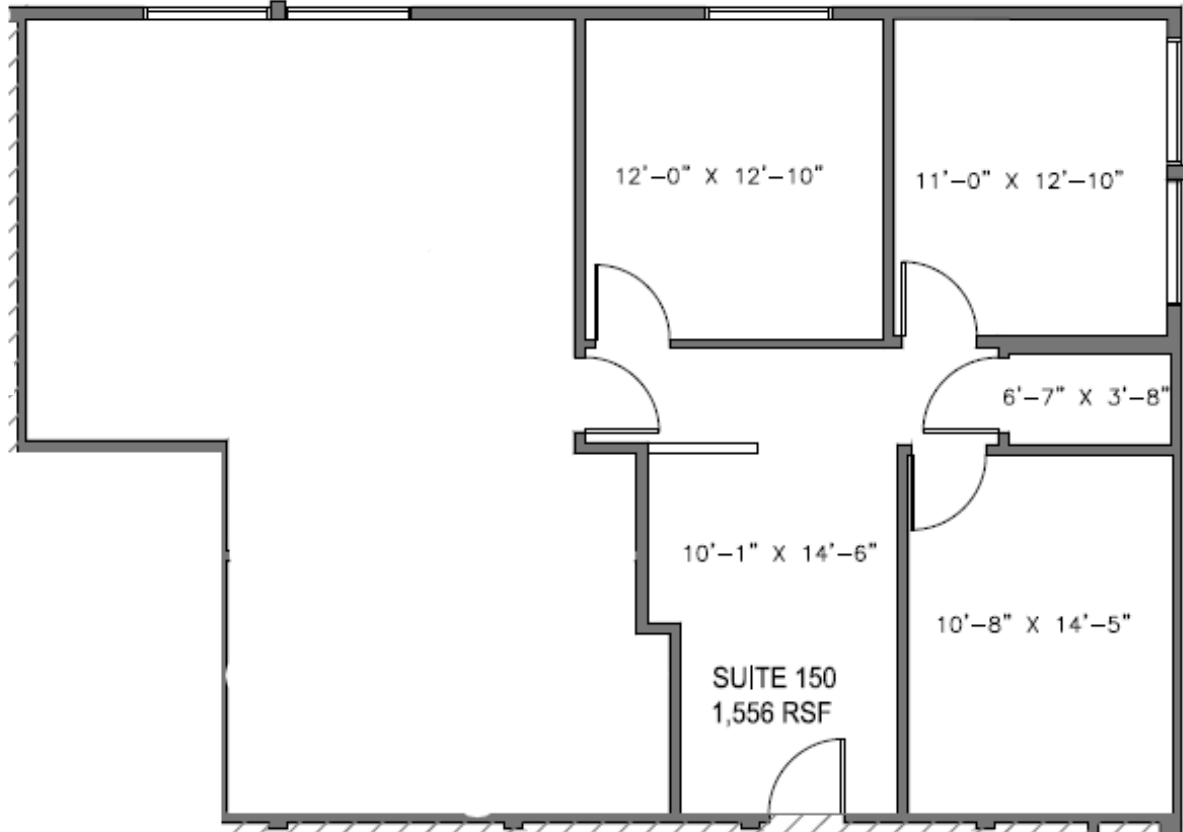
Lee & Associates® - LA North Ventura, Inc. • Corporate ID #01191898
A Member of the Lee & Associates® Group of Companies
15060 Ventura Blvd., Suite 100 • Sherman Oaks, CA 91403
P:818.986.9800 F:818.933.0405 • www.leenorth.com

All information furnished regarding the property is from sources deemed reliable, but no warranty or representation is made as to the accuracy thereof. This information is submitted subject to errors, omissions, change of price or terms, prior sale or lease, or withdrawal without notice. No liability of any kind is to be imposed on the broker herein.

OFFICE SPACE FOR LEASE

15335 Morrison Street | Sherman Oaks

SUITE 150 FLOOR PLAN



NOT TO SCALE

For more information please contact:

Todd Wuschnig

Principal

818.933.0301

twuschnig@lee-re.com

DRE #01367230

Stacy Vierheilig-Fraser

Principal

818.933.0313

svierheilig@lee-re.com

DRE #00986794



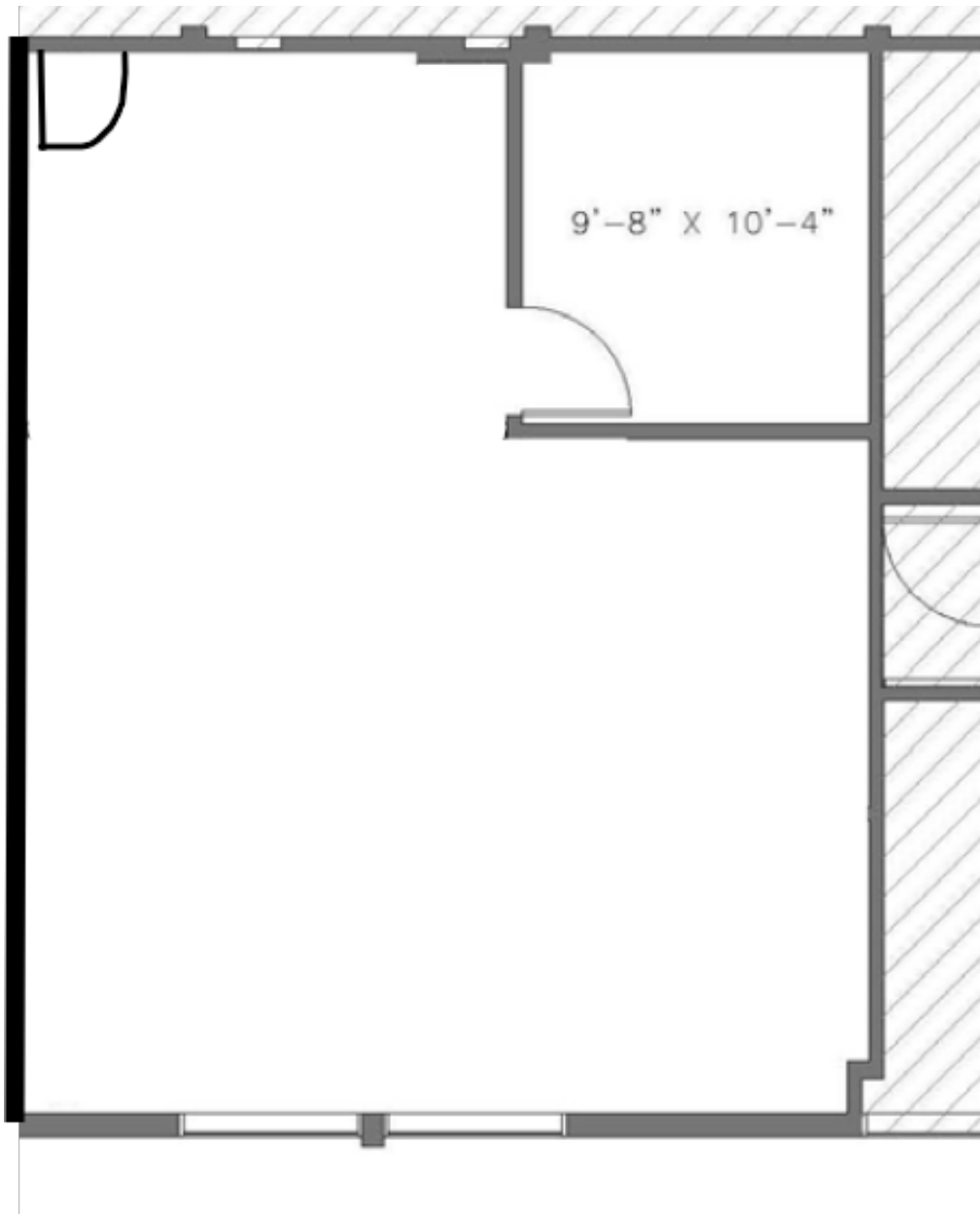
Lee & Associates® - LA North Ventura, Inc. • Corporate ID #01191898
A Member of the Lee & Associates® Group of Companies
15060 Ventura Blvd., Suite 100 • Sherman Oaks, CA 91403
P:818.986.9800 F:818.933.0405 • www.leeandnorth.com

All information furnished regarding the property is from sources deemed reliable, but no warranty or representation is made as to the accuracy thereof. This information is submitted subject to errors, omissions, change of price or terms, prior sale or lease, or withdrawal without notice. No liability of any kind is to be imposed on the broker herein.

OFFICE SPACE FOR LEASE

15335 Morrison Street | Sherman Oaks

SUITE 237 FLOOR PLAN



NOT TO SCALE

For more information please contact:

Todd Wuschmig

Principal

818.933.0301

twuschmig@lee-re.com

DRE #01367230

Stacy Vierheilig-Fraser

Principal

818.933.0313

svierheilig@lee-re.com

DRE #00986794



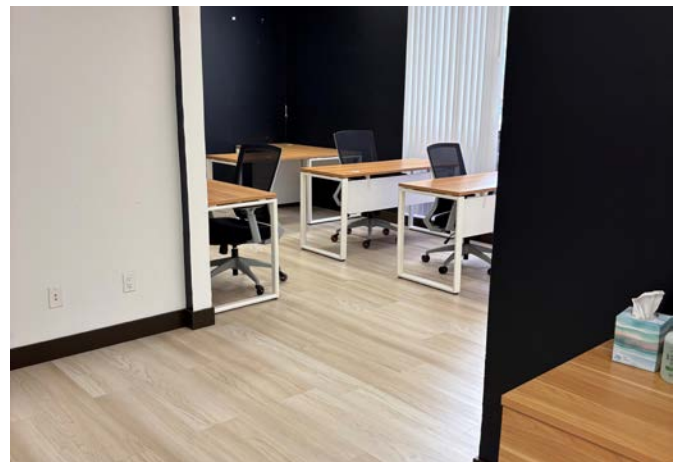
Lee & Associates® - LA North Ventura, Inc. • Corporate ID #01191898
A Member of the Lee & Associates® Group of Companies
15060 Ventura Blvd., Suite 100 • Sherman Oaks, CA 91403
P:818.986.9800 F:818.933.0405 • www.leenorth.com

All information furnished regarding the property is from sources deemed reliable, but no warranty or representation is made as to the accuracy thereof. This information is submitted subject to errors, omissions, change of price or terms, prior sale or lease, or withdrawal without notice. No liability of any kind is to be imposed on the broker herein.

OFFICE SPACE FOR LEASE

15335 Morrison Street | Sherman Oaks

SUITE PHOTOS



For more information please contact:

Todd Wuschnig

Principal

818.933.0301

twuschnig@lee-re.com

DRE #01367230

Stacy Vierheilig-Fraser

Principal

818.933.0313

svierheilig@lee-re.com

DRE #00986794



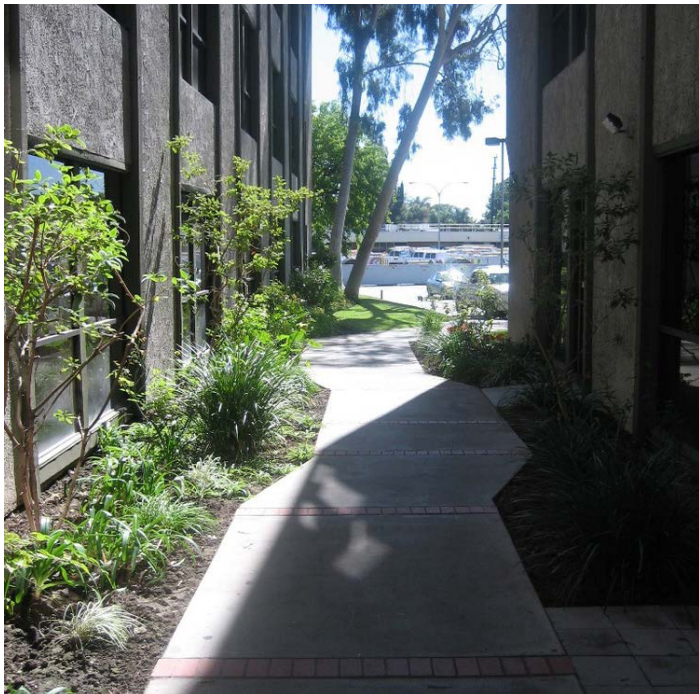
Lee & Associates® - LA North Ventura, Inc. • Corporate ID #01191898
A Member of the Lee & Associates® Group of Companies
15060 Ventura Blvd., Suite 100 • Sherman Oaks, CA 91403
P:818.986.9800 F:818.933.0405 • www.leenorth.com

All information furnished regarding the property is from sources deemed reliable, but no warranty or representation is made as to the accuracy thereof. This information is submitted subject to errors, omissions, change of price or terms, prior sale or lease, or withdrawal without notice. No liability of any kind is to be imposed on the broker herein.

OFFICE SPACE FOR LEASE

15335 Morrison Street | Sherman Oaks

PROPERTY PHOTOS



For more information please contact:

Todd Wuschnig

Principal

818.933.0301

twuschnig@lee-re.com

DRE #01367230

Stacy Vierheilg-Fraser

Principal

818.933.0313

svierheilg@lee-re.com

DRE #00986794



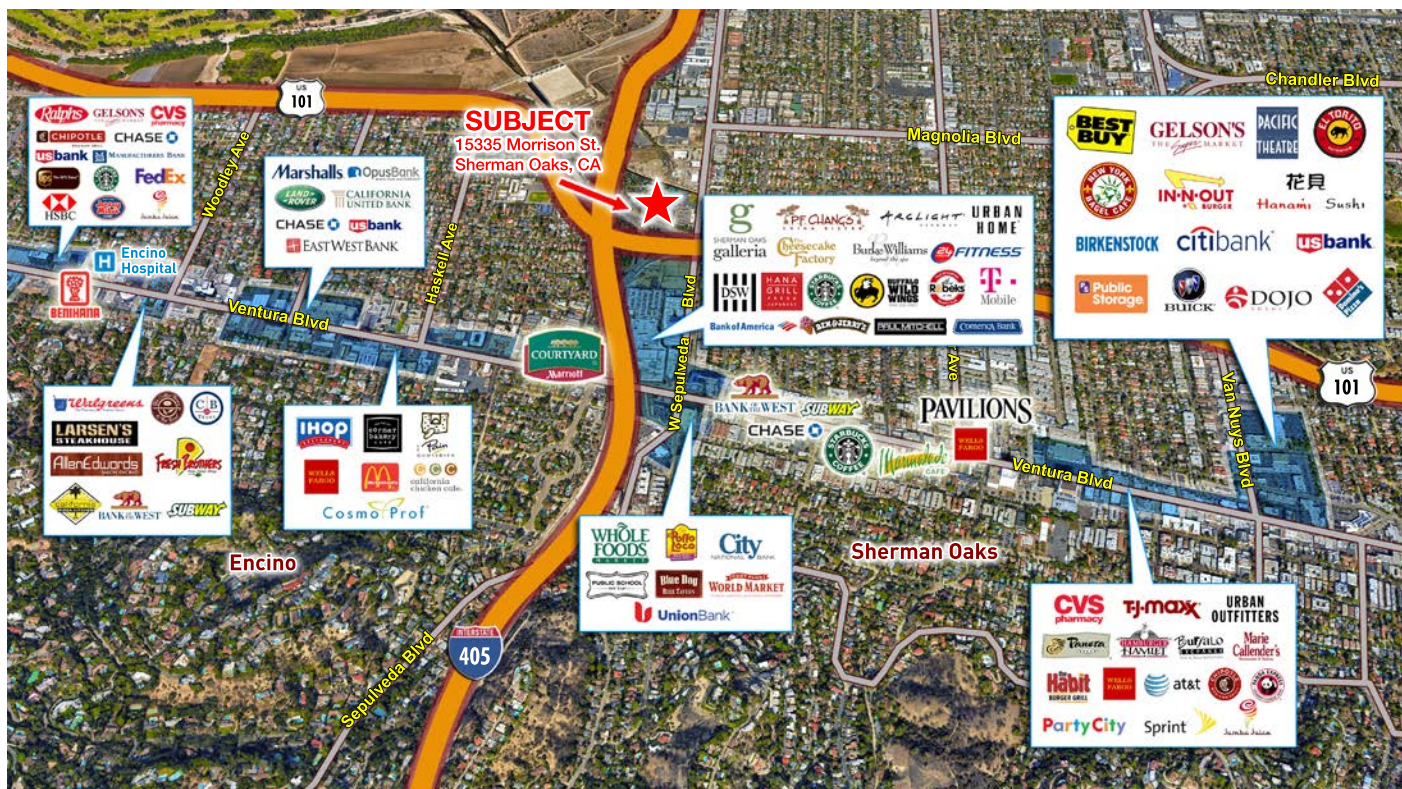
Lee & Associates® - LA NorthVentura, Inc. • Corporate ID #01191898
A Member of the Lee & Associates® Group of Companies
15060 Ventura Blvd., Suite 100 • Sherman Oaks, CA 91403
P:818.986.9800 F:818.933.0405 • www.leenorth.com

All information furnished regarding the property is from sources deemed reliable, but no warranty or representation is made as to the accuracy thereof. This information is submitted subject to errors, omissions, change of price or terms, prior sale or lease, or withdrawal without notice. No liability of any kind is to be imposed on the broker herein.

OFFICE SPACE FOR LEASE

15335 Morrison Street | Sherman Oaks

AERIAL & AMENITIES MAP



For more information please contact:

Todd Wuschig

Principal

818.933.0301

twuschig@lee-re.com

DRE #01367230

Stacy Vierheilig-Fraser

Principal

818.933.0313

svierheilig@lee-re.com

DRE #00986794



COMMERCIAL REAL ESTATE SERVICES

Lee & Associates® - LA North Ventura, Inc. • Corporate ID #01191898
 A Member of the Lee & Associates® Group of Companies
 15060 Ventura Blvd., Suite 100 • Sherman Oaks, CA 91403
 P:818.986.9800 F:818.933.0405 • www.leeanorth.com

All information furnished regarding the property is from sources deemed reliable, but no warranty or representation is made as to the accuracy thereof. This information is submitted subject to errors, omissions, change of price or terms, prior sale or lease, or withdrawal without notice. No liability of any kind is to be imposed on the broker herein.