



DOWNTOWN OFFICE MEDICAL BUILDING

2201-2205

19TH STREET

BAKERSFIELD, CA 93301

FOR LEASE

# PROPERTY HIGHLIGHTS



2201 19th Street is a medical office suite located on the southwest corner of 19th Street and C Street in Downtown Bakersfield. Less than half a mile away from Dignity Health's Mercy Hospital Downtown, the space is conveniently located near major downtown amenities. The space is improved with up to five exam rooms, doctor's office, reception area, administrative office, and more. Exam rooms are improved with sinks and built-in cabinetry. In addition, one of the exam rooms is oversized to allow for procedures. New HVAC Units. On and off-street parking is available.

2201 19th Street is located on the southwest corner of 19th Street and C Street in Downtown Bakersfield. Units are separately metered.

## Available Spaces:

2201 19th Street: ±1,750 RSF

2203 19th Street : ±1,750 RSF

Asking Rent: \$1.85/ SF/ MG



±5,250 SF  
BUILDING SIZE



1974  
YEAR BUILT



1  
STORIES

# FLOOR PLAN

±5,250 RSF  
OFFICE BUILDING

**2205 19th Street**  
±1,750 SF  
LEASED

**2203 19th Street**  
±1,750 SF

**2201 19th Street**  
±1,750 SF

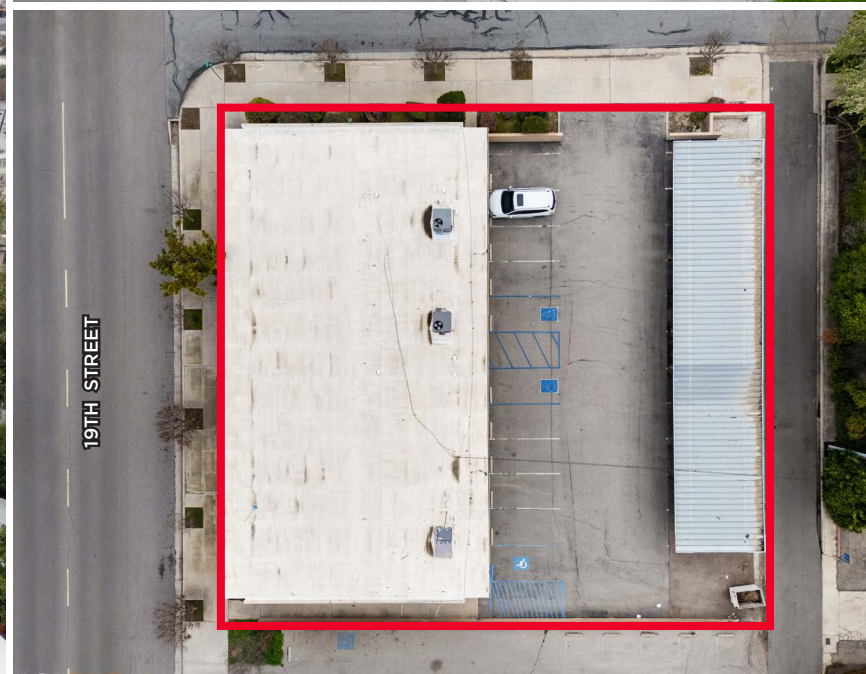
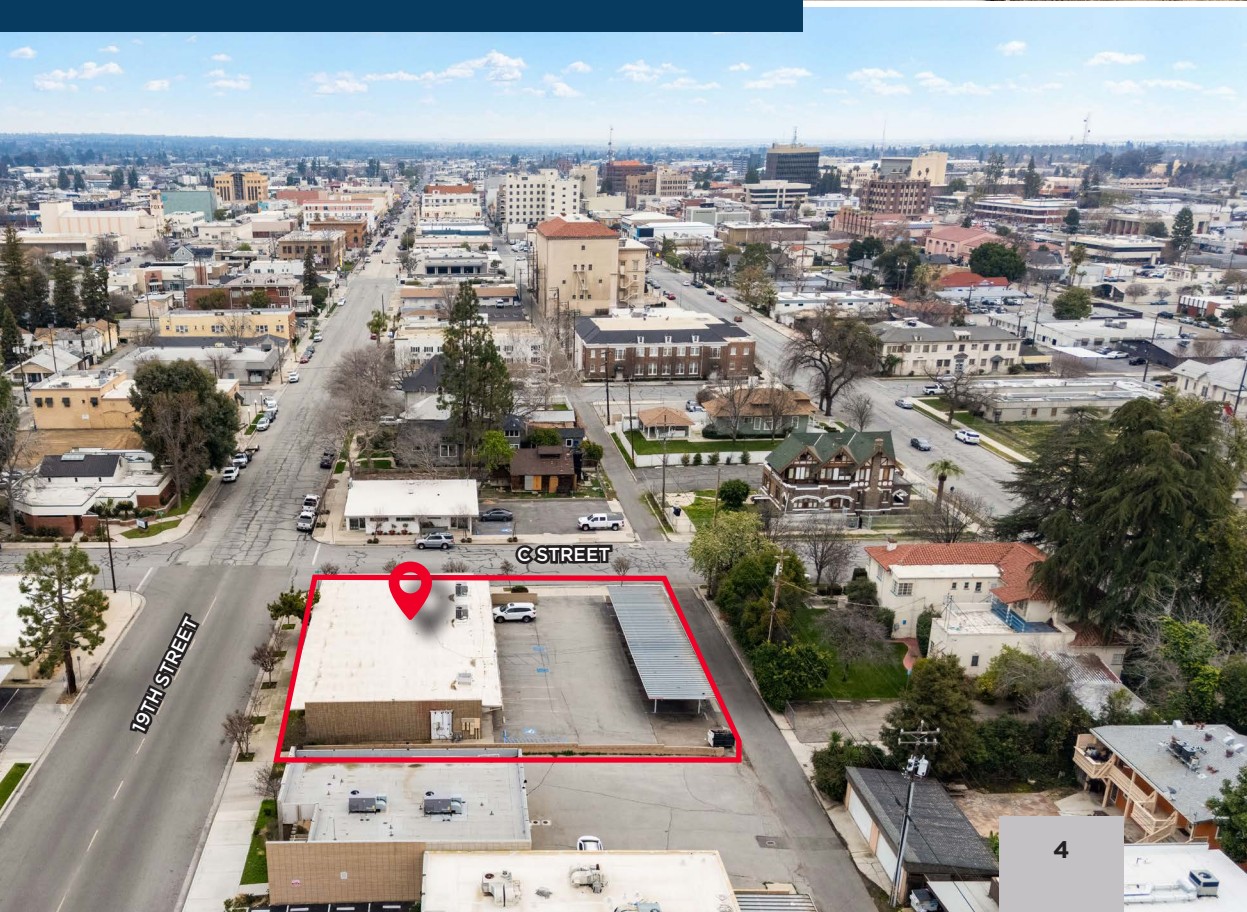
**19TH STREET**



NOTE: PLANS NOT  
DRAWN TO SCALE



PROPERTY PHOTOS







C STREET

B STREET

19TH STREET

6



**CUSHMAN &  
WAKEFIELD**



## CONTACT INFO

**Scott Salters**  
Senior Director  
+1 661 204 6725  
scott.salters@cushwake.com  
Lic. 02068579

5060 California Avenue  
Suite 1000  
Bakersfield, CA 93309  
Lic. 01880493  
[cushmanwakefield.com](http://cushmanwakefield.com)

©2025 Cushman & Wakefield. All rights reserved. The information contained in this communication is strictly confidential. This information has been obtained from sources believed to be reliable but has not been verified. NO WARRANTY OR REPRESENTATION, EXPRESS OR IMPLIED, IS MADE AS TO THE CONDITION OF THE PROPERTY (OR PROPERTIES) REFERENCED HEREIN OR AS TO THE ACCURACY OR COMPLETENESS OF THE INFORMATION CONTAINED HEREIN, AND SAME IS SUBMITTED SUBJECT TO ERRORS, OMISSIONS, CHANGE OF PRICE, RENTAL OR OTHER CONDITIONS, WITHDRAWAL WITHOUT NOTICE, AND TO ANY SPECIAL LISTING CONDITIONS IMPOSED BY THE PROPERTY OWNER(S). ANY PROJECTIONS, OPINIONS OR ESTIMATES ARE SUBJECT TO UNCERTAINTY AND DO NOT SIGNIFY CURRENT OR FUTURE PROPERTY PERFORMANCE.