

200 Solar Drive

Available July 1, 2025 - August 31, 2026

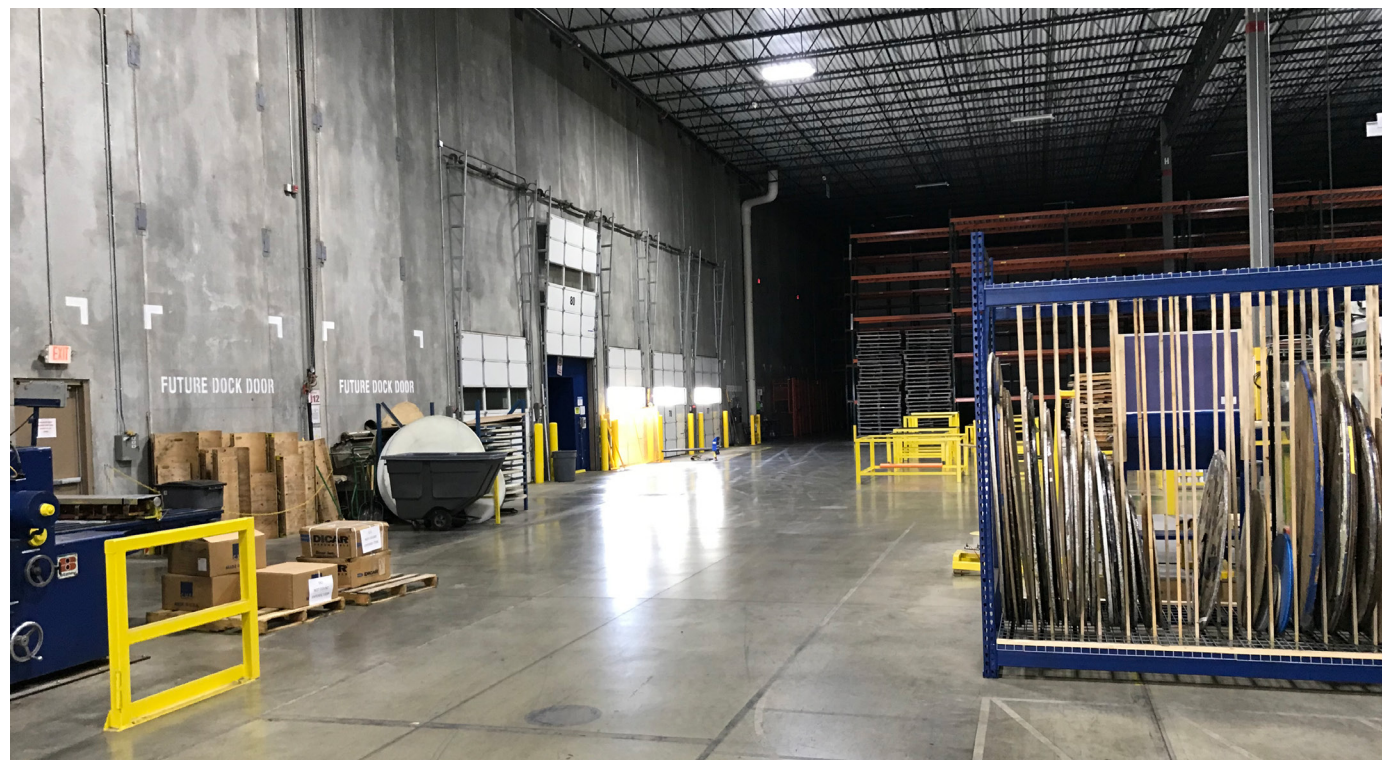
200 Solar Drive
Imperial, PA 15126
www.cbre.com/properties

83,593 SF Available With Approximately 5,338 Square Feet of Office Space



Sublease Available

Square Footage	83,593 Square Feet
Office Space	Approx. 5,338 Square Feet
Loading Docks	Ten (10) - Five (5) have levelers
Grade Doors	One (1) 12' x 14' (ramped)
Column Spacing	Approx. 52' x 50'
Clear Height	Min 32' Clear
Parking	77 Car Parking Spaces are allocated to the Tenant
Lighting	LEDs with Motion Sensors
Power	700-Amps, 480-Volt, 3-Phase
Sprinklers	ESFR System with K17 Heads
Availability	July 1, 2025
Sublease Term	Through August 31, 2026





9 Minutes
Pittsburgh International Airport

28 Minutes
Pittsburgh CBD

28 Minutes
Steubenville, Ohio

57 Minutes
Wheeling, West Virginia

Within two (2) miles of Findlay Connector.

Contact Us

Robert P. Blackmore, SIOR
First Vice President
+1 412 400 0082
robert.blackmore@cbre.com

© 2025 CBRE, Inc. All rights reserved. This information has been obtained from sources believed reliable, but has not been verified for accuracy or completeness. You should conduct a careful, independent investigation of the property and verify all information. Any reliance on this information is solely at your own risk. CBRE and the CBRE logo are service marks of CBRE, Inc. All other marks displayed on this document are the property of their respective owners, and the use of such logos does not imply any affiliation with or endorsement of CBRE. Photos herein are the property of their respective owners. Use of these images without the express written consent of the owner is prohibited.