

**1424 LINCOLN BLVD.  
SANTA MONICA**



**FOR LEASE**

**1424 Lincoln Boulevard**

SANTA MONICA, CA 90401

ONE OF A KIND, BOUTIQUE OFFICE BUILDING IN THE HEART OF DOWNTOWN SANTA MONICA

Get in touch

**Christian Saglie**

310.362.6784  
christian.saglie@compass.com  
CalDRE #01952665

COMPASS  
COMMERCIAL

# Executive Summary



### Summary

Available Size:	2000 SF - 4000 SF
Lot Size:	7,405 SF
Rental Rate	\$2.75 NNN
Term:	3-5 Years
Year Built:	1981
Zoning:	C4

### Highlights

Compass is pleased to present a rare and exceptional opportunity to lease a boutique, freestanding building in the heart of Santa Monica. 1424 Lincoln Boulevard features a private gated parking lot with 22 striped spaces, elevator access, abundant natural light with massive windows and skylights, an open creative layout, and a strategic location ideal for office tenants of all industries seeking a foothold in Southern California's most vibrant and sought-after commercial real estate market. The property is conveniently located next to the highly anticipated Tishman Speyer mixed-use development which will feature luxury apartments and ground floor retail.

#### Features:

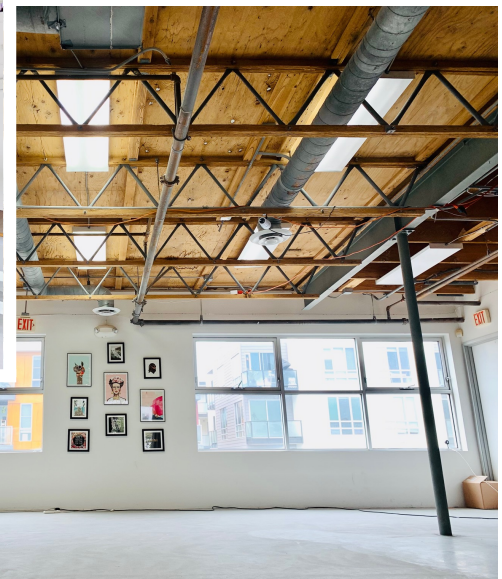
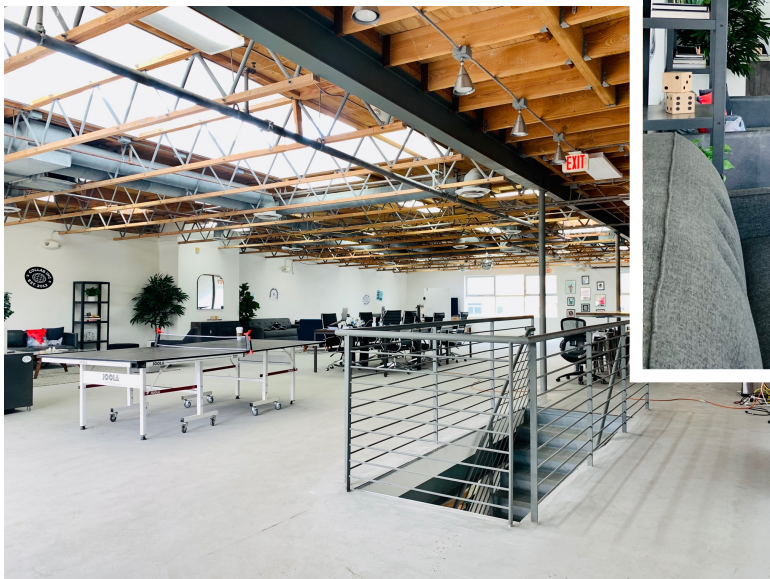
- Elevator
- 22 Striped parking spaces within a private gated lot
- Open plan, with high exposed ceilings
- Abundant Natural Light
- Generous tenant improvement allowance
- Immediate access to major highways, and public transportation
- Countless walkable amenities featuring world class cuisine, nightlife, hotels, parks and the beach

**Christian Saglie**  
 310.362.6784  
 christian.saglie@compass.com  
 CalDRE #01952665

# Photos



**Christian Saglie**  
310.362.6784  
christian.saglie@compass.com  
CalDRE #01952665



# Walkable Amenities



**Christian Saglie**  
310.362.6784  
christian.saglie@compass.com  
CalDRE #01952665

# Neighboring Tenants



**Christian Saglie**  
310.362.6784  
christian.saglie@compass.com  
CalDRE #01952665