

**1,829 SQFT OFFICE & 57 SQUARE METRES SQFT**

**PRIVATE TERRACE**

4TH FLOOR NORTHGATE  
118 NORTH STREET, LEEDS, LS2 7PN

**YOUR  
OWN  
OFFICE**



- 01** LOCATION
- 02** PRIVATE TERRACE
- 03** PRIVATE OFFICES
- 04** MAIN OFFICES
- 05** FLOOR PLAN
- 06** KITCHEN & OFFICES AMENTIES
- 07** BREAK OUT AREAS
- 08** WSH FACILITIES



## 01 LOCATION



### HEART OF THE CITY

- Leeds City Museum & Millennium Square - Approximately 0.5 miles (0.8 km) away, about a 10-minute walk.
- Leeds Art Gallery - Around 0.6 miles (1 km) away, roughly a 12-minute walk.
- Trinity Leeds Shopping Centre - Approximately 0.7 miles (1.1 km) away, about a 14-minute walk.
- Leeds Grand Theatre - Roughly 0.4 miles (0.6 km) away, about an 8-minute walk.
- Woodhouse Moor (Hyde Park) - About 0.8 miles (1.3 km) away, approximately a 15-minute walk.



## 02 PRIVATE TERRACE



The roof top terrace offers magnificent views of Leeds city skyline and can double as a relaxation and social area  
57 square metres

### 03 PRIVATE OFFICES



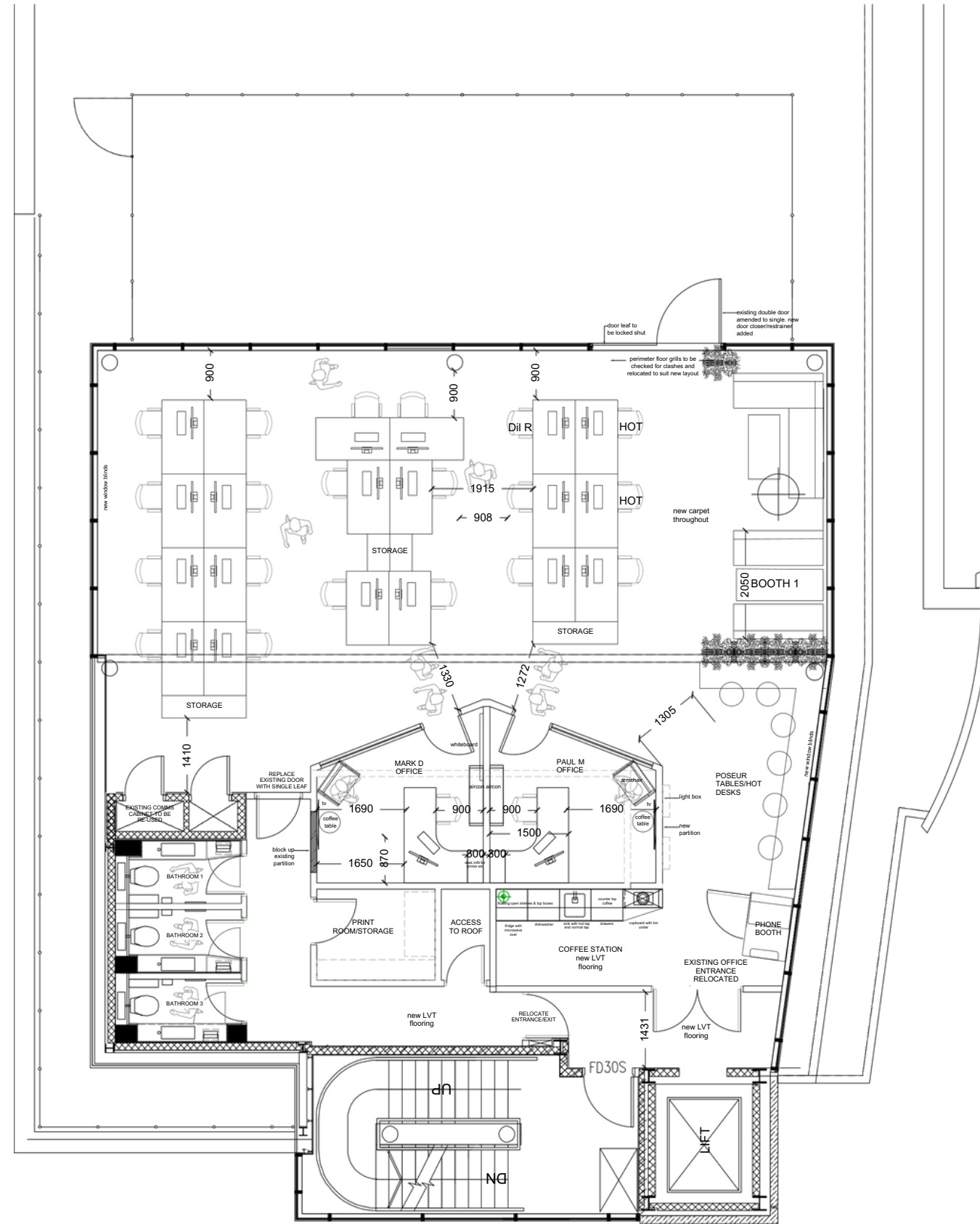
### 03 PRIVATE OFFICES



# 04 MAIN OFFICES



# 05 FLOOR PLAN



4TH FLOOR PLAN

|  |   |   |
|--|---|---|
|   | FATFISH DESIGN - Hospitality Design Specialists<br>E: design@fatfishdesign.com T: 07841596862 |   |
|  | REV DATE  | AMENDMENTS  |
| DRAWING TITLE: AS BUILT GA<br>CLIENT: PARKLANE GROUP<br>PROJECT: 4TH FLOOR HEAD OFFICE |   | PROJECT NO: HO<br>DRAWING NO: 101_002<br>SCALE: 1:50 @ A1 |
|  |   | DATE: 15.11.22<br>STATUS: AS BUILT<br>REVISION:           |

06 KICHEN & OFFICIE AMENITIES



06 OFFICE AMENITIES



07 BREAK OUT AREAS



## 08 WORKSPACE HUB FACILITIES

### ALL INCLUSIVE

3 car parking spaces in our underground car park

Access to well-equipped kitchen facilities including a dishwasher, fridge, kettle, toaster, water dispenser, and microwave

Fast 500MB internet connection

Regular cleaning service with offices vacuumed and polished twice a week

Enhanced security measures for the entire floor and building

Participation in our in-house events

24/7 access to the premises

Inclusive of business rates

**No additional service charges**



## Contact Us

**Northgate Building: 118 North Street, Leeds, LS2 7PN**

**St Andrew's House: St Andrew's St, Leeds LS3 1LF, UK**

**Telephone: 0113 242 5100**

**Email: [info@workspacehub.co.uk](mailto:info@workspacehub.co.uk)**



**@workspacehub**



**@workspacehub**



**@workspacehub**



**@workspacehub**