

**AVISON
YOUNG**

Office Space For Lease

**280 Albert Street
Ottawa, ON**



Space Highlights

- Between +/- 527 sf to 2,934 sf of available space
- Prime location and professional atmosphere
- Public transportation nearby
- Located in the heart of downtown Ottawa and conveniently close to the LRT station
- Surrounded by shops, dining & services

Avison Young Commercial Real Estate Services, LP, Brokerage | 45 O'Connor Street, Suite 800 | Ottawa, ON K1P 1A4 | +1 613 567 2680 | avisonyoung.ca

Avison Young Commercial Real Estate Services, LP, Brokerage. All rights reserved.
E. & O.E.: Information contained herein was obtained from sources deemed reliable and, while thought to be correct, have not been verified. Avison Young does not guarantee the accuracy or completeness of the information presented, nor assumes any responsibility or liability for any errors or omissions therein.

Get more information

David A. MacLeod

Sales Representative

D +1 613 696 2764

david.macleod@avisonyoung.com

Giorgio DiNardo

Sales Representative

D +1 613 696 2763

giorgio.dinardo@avisonyoung.com

Liam Kunding-Markhauser

Sales Representative

D +1 613 696 2731

liam.markhauser@avisonyoung.com



Platinum
member

Property

For Lease

280 Albert Street
Ottawa, ON

Address: 280 Albert St., Ottawa, ON
K1P 5G8

Location: Downtown Core

Year Built: 1967

Available Area:

Suite 201 = +/- 2,934 sf

Suite 208 = +/- 527 sf

Suite 600 = +/- 5,462 sf

Suite 601 = +/- 2,115 sf

Suite 705 = +/- 1,750 sf

Suite 707 = +/- 1,590 sf

Suite 803 = +/- 2,417 sf

Suite 800 = +/- 2,363sf

Suite 802 = +/- 1,556 sf

Suite 804 = +/- 1,321 sf

Suite 900 = +/- 2,442 sf

Suite 902 = +/- 2,014 sf

Suite 1002 = +/- 2,498 sf

Suite 1003 = +/- 942 sf

Net Rent: \$12.00 psf

Additional Rent: \$12.89 psf

Parking: Available

Key Highlights:

- Enclosed offices with meeting room and kitchenette in some suites
- Easy access to public transportation



Gallery

For Lease

280 Albert Street
Ottawa, ON



Suite 201



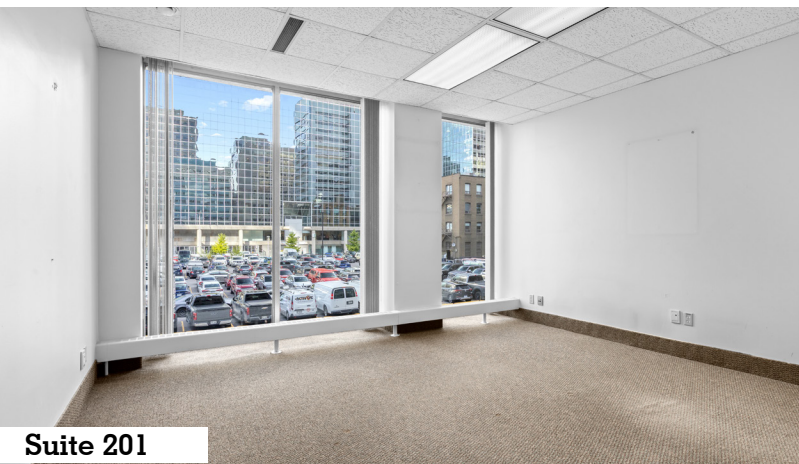
Suite 201



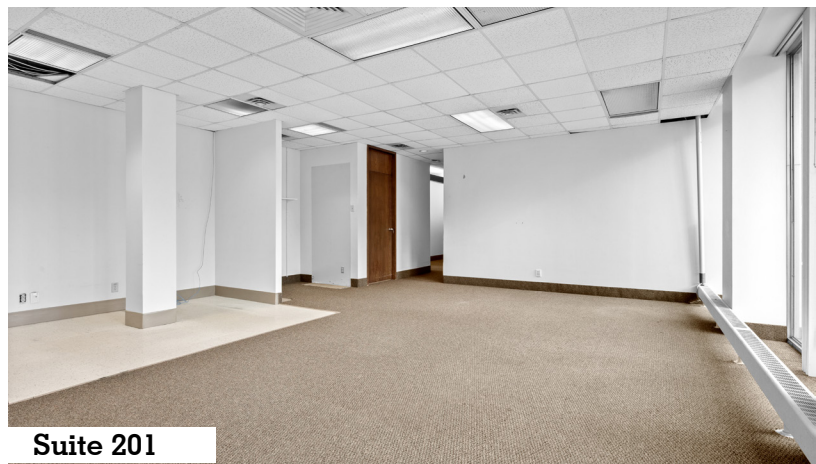
Suite 201



Suite 201



Suite 201



Suite 201

David A. MacLeod
Sales Representative
D +1 613 696 2764
david.macleod@avisonyoung.com

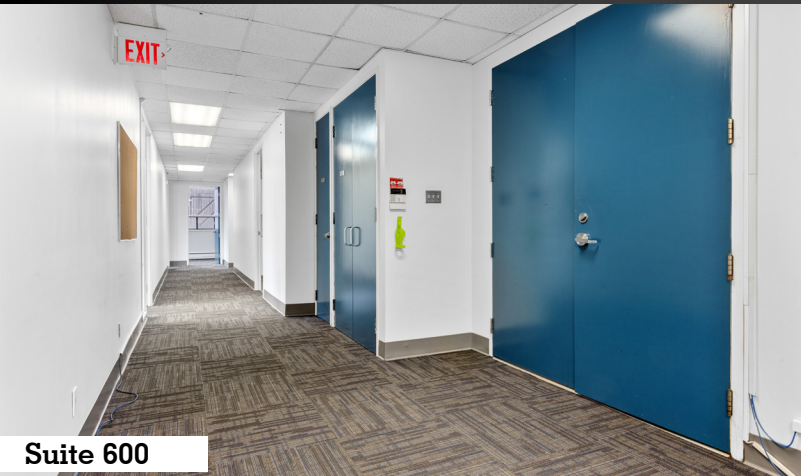
Giorgio DiNardo
Sales Representative
D +1 613 696 2763
giorgio.dinardo@avisonyoung.com

Liam Kundering-Markhauser
Sales Representative
D +1 613 696 2731
liam.markhauser@avisonyoung.com

Gallery

For Lease

280 Albert Street
Ottawa, ON



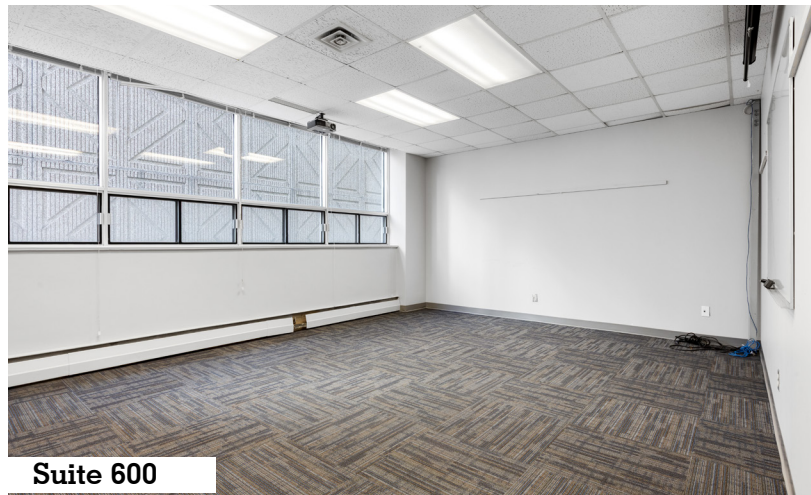
Suite 600



Suite 600



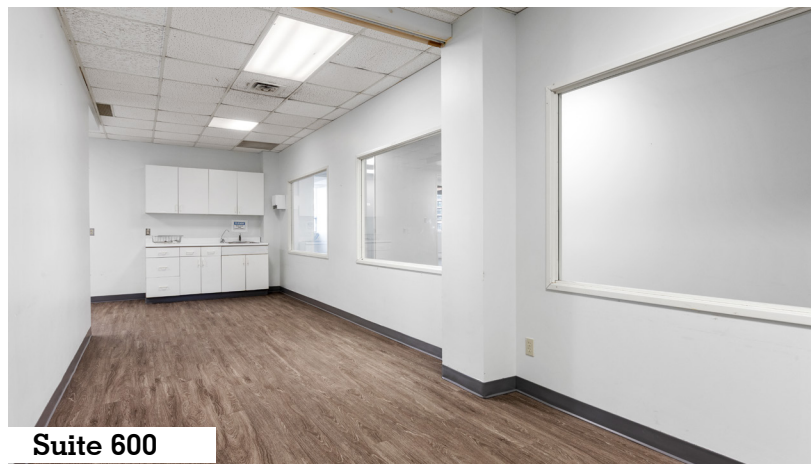
Suite 600



Suite 600



Suite 600



Suite 600

David A. MacLeod
Sales Representative
D +1 613 696 2764
david.macleod@avisonyoung.com

Giorgio DiNardo
Sales Representative
D +1 613 696 2763
giorgio.dinardo@avisonyoung.com

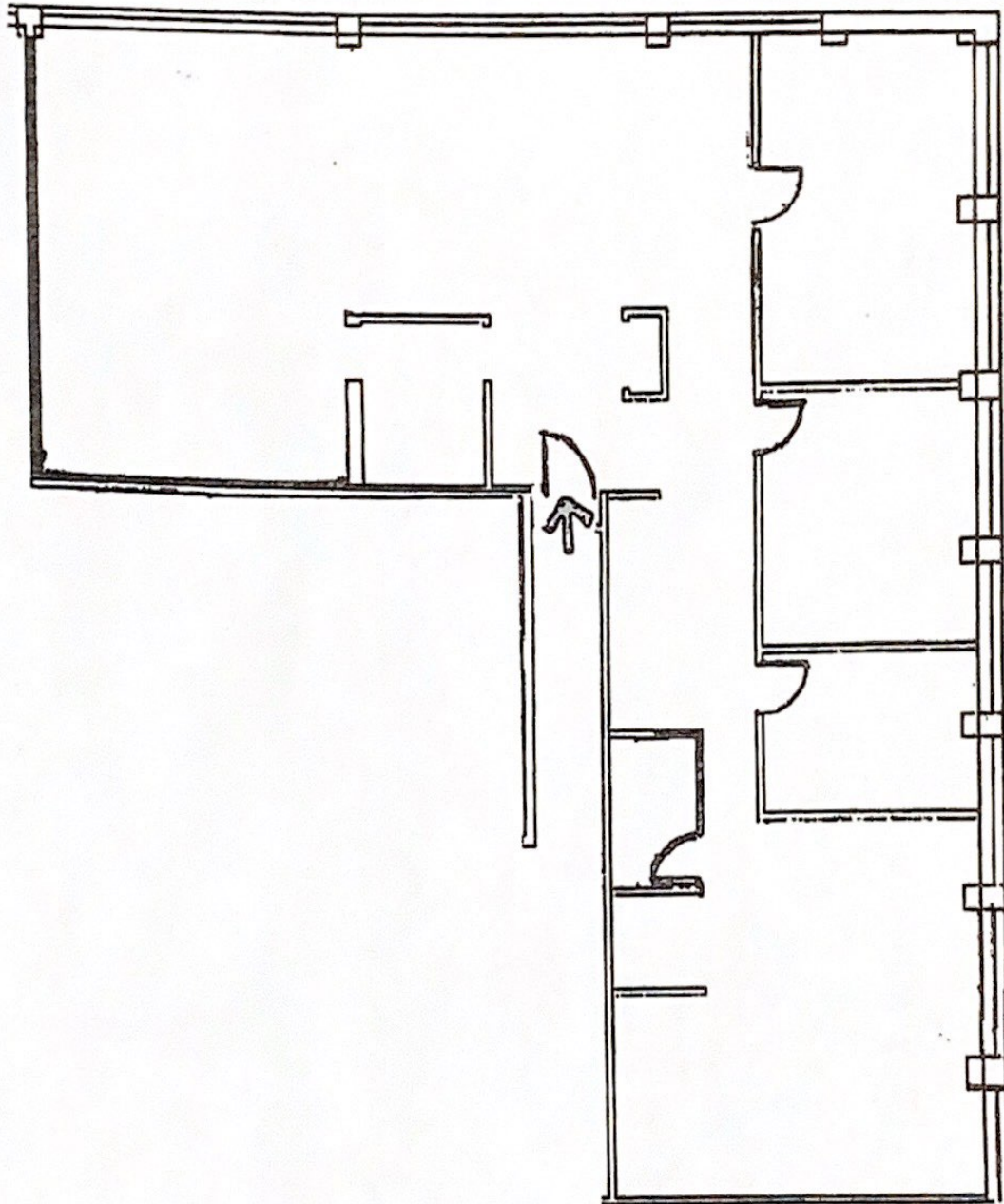
Liam Kundinger-Markhauser
Sales Representative
D +1 613 696 2731
liam.markhauser@avisonyoung.com

Floor Plan

Suite 201

For Lease
280 Albert Street
Ottawa, ON

Suite 201 = +/- 2,934 sf



Floorplan not to scale

David A. MacLeod
Sales Representative
D +1 613 696 2764
david.macleod@avisonyoung.com

Giorgio DiNardo
Sales Representative
D +1 613 696 2763
giorgio.dinardo@avisonyoung.com

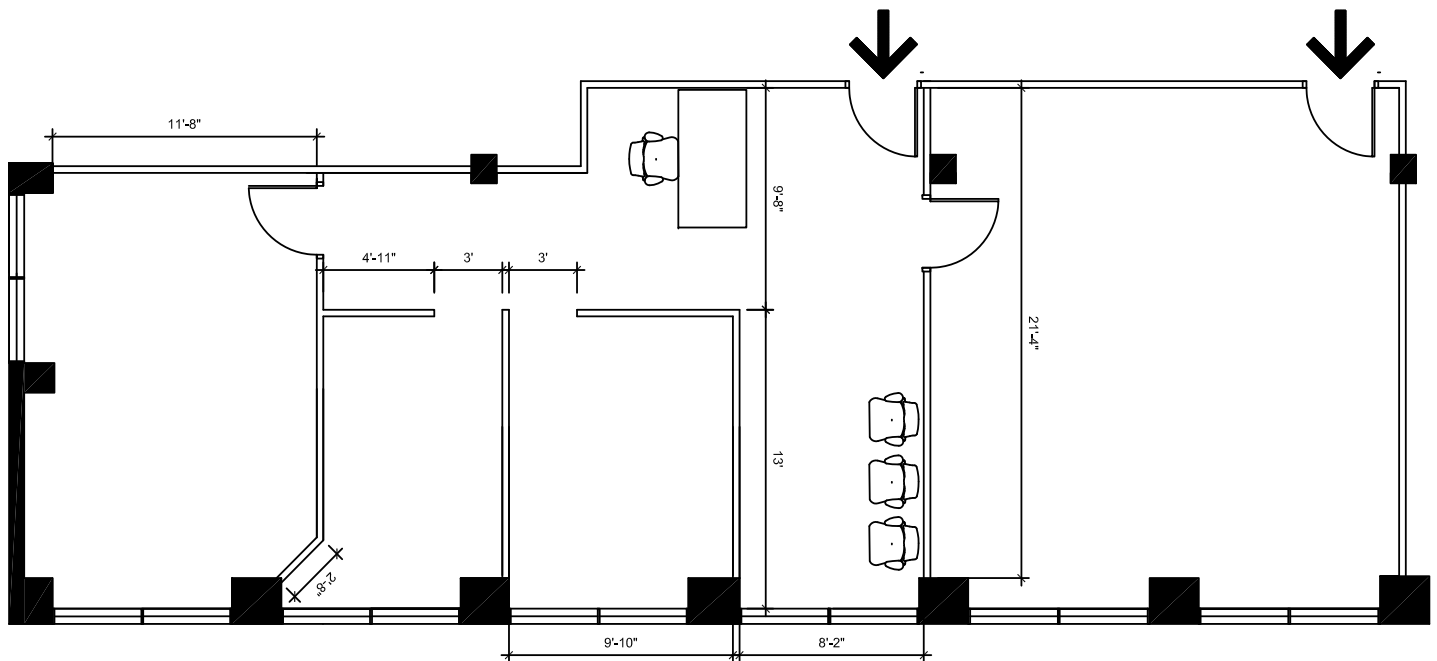
Liam Kunderger-Markhauser
Sales Representative
D +1 613 696 2731
liam.markhauser@avisonyoung.com

Floor Plan

Suite 208

For Lease
280 Albert Street
Ottawa, ON

Suite 208 = +/- 527 sf



Floorplan not to scale

David A. MacLeod
Sales Representative
D +1 613 696 2764
david.macleod@avisonyoung.com

Giorgio DiNardo
Sales Representative
D +1 613 696 2763
giorgio.dinardo@avisonyoung.com

Liam Kunding-Markhauser
Sales Representative
D +1 613 696 2731
liam.markhauser@avisonyoung.com

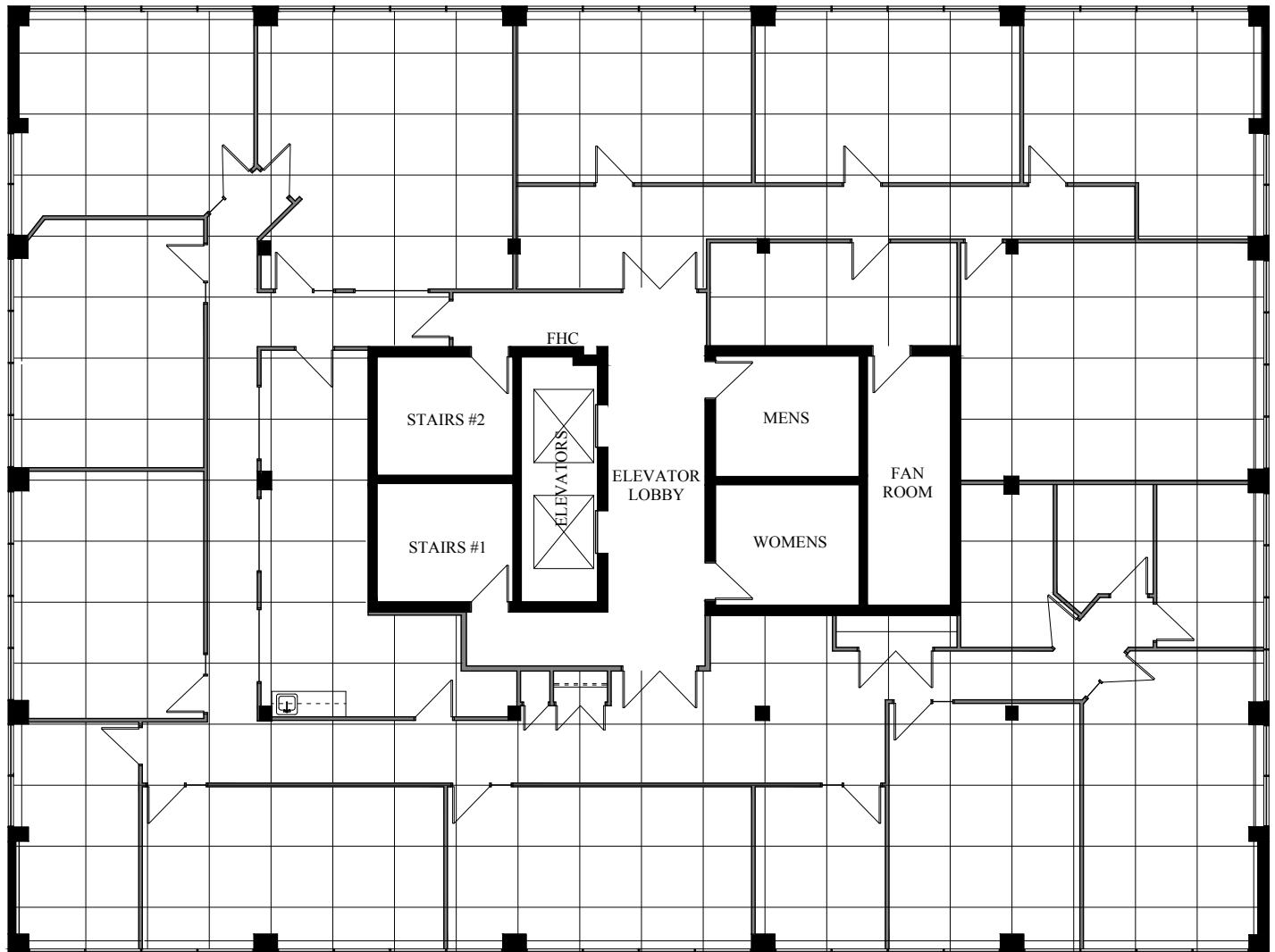
Floor Plan

Suite 600 & 601

For Lease
280 Albert Street
Ottawa, ON

Suite 600 = +/- 5,462 sf

Suite 601 = +/- 2,115 sf



Floorplan not to scale

David A. MacLeod
Sales Representative
D +1 613 696 2764
david.macleod@avisonyoung.com

Giorgio DiNardo
Sales Representative
D +1 613 696 2763
giorgio.dinardo@avisonyoung.com

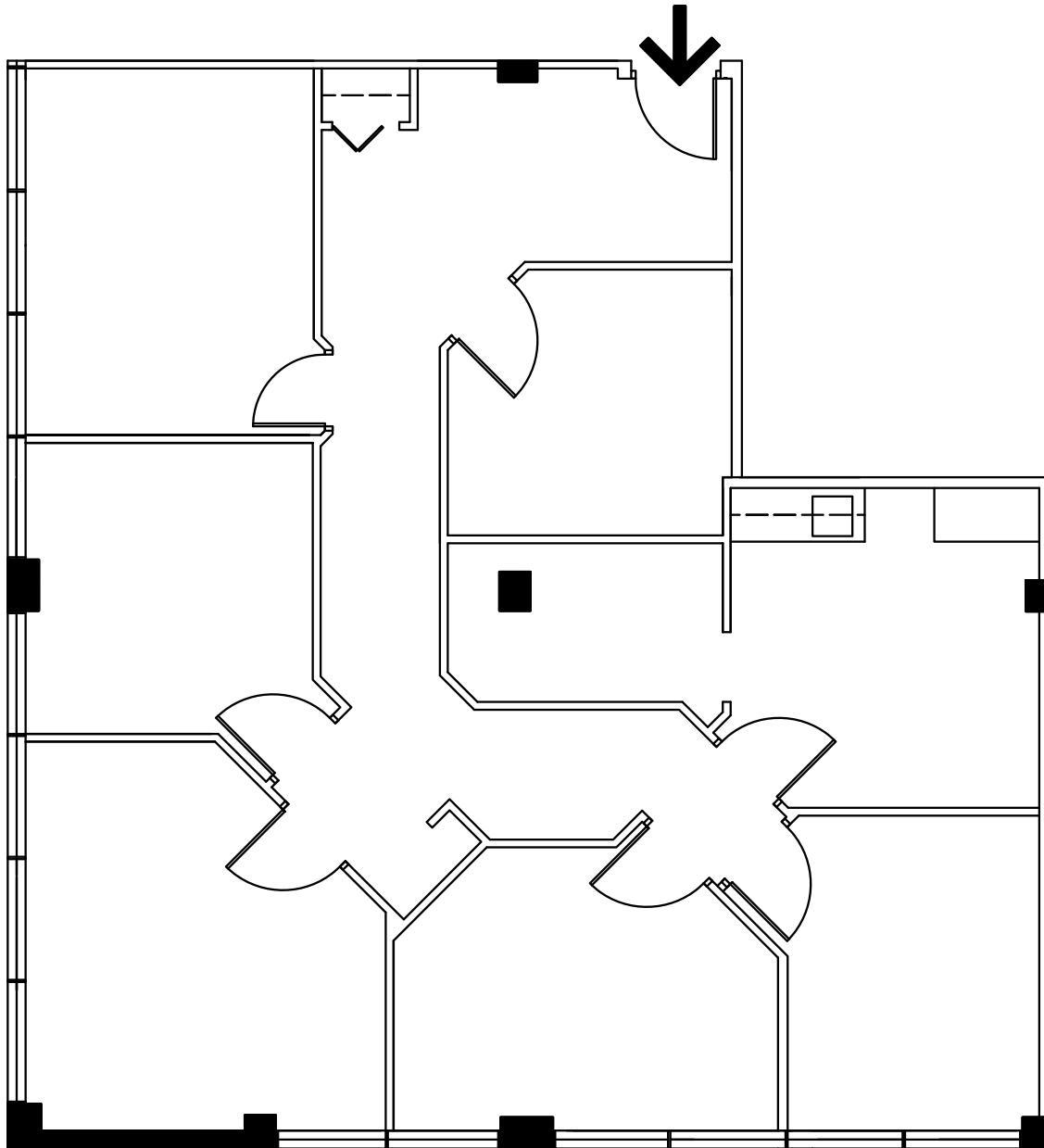
Liam Kunderger-Markhauser
Sales Representative
D +1 613 696 2731
liam.markhauser@avisonyoung.com

Floor Plan

Suite 705

For Lease
280 Albert Street
Ottawa, ON

Suite 705 = +/- 1,750 sf



Floorplan not to scale

David A. MacLeod
Sales Representative
D +1 613 696 2764
david.macleod@avisonyoung.com

Giorgio DiNardo
Sales Representative
D +1 613 696 2763
giorgio.dinardo@avisonyoung.com

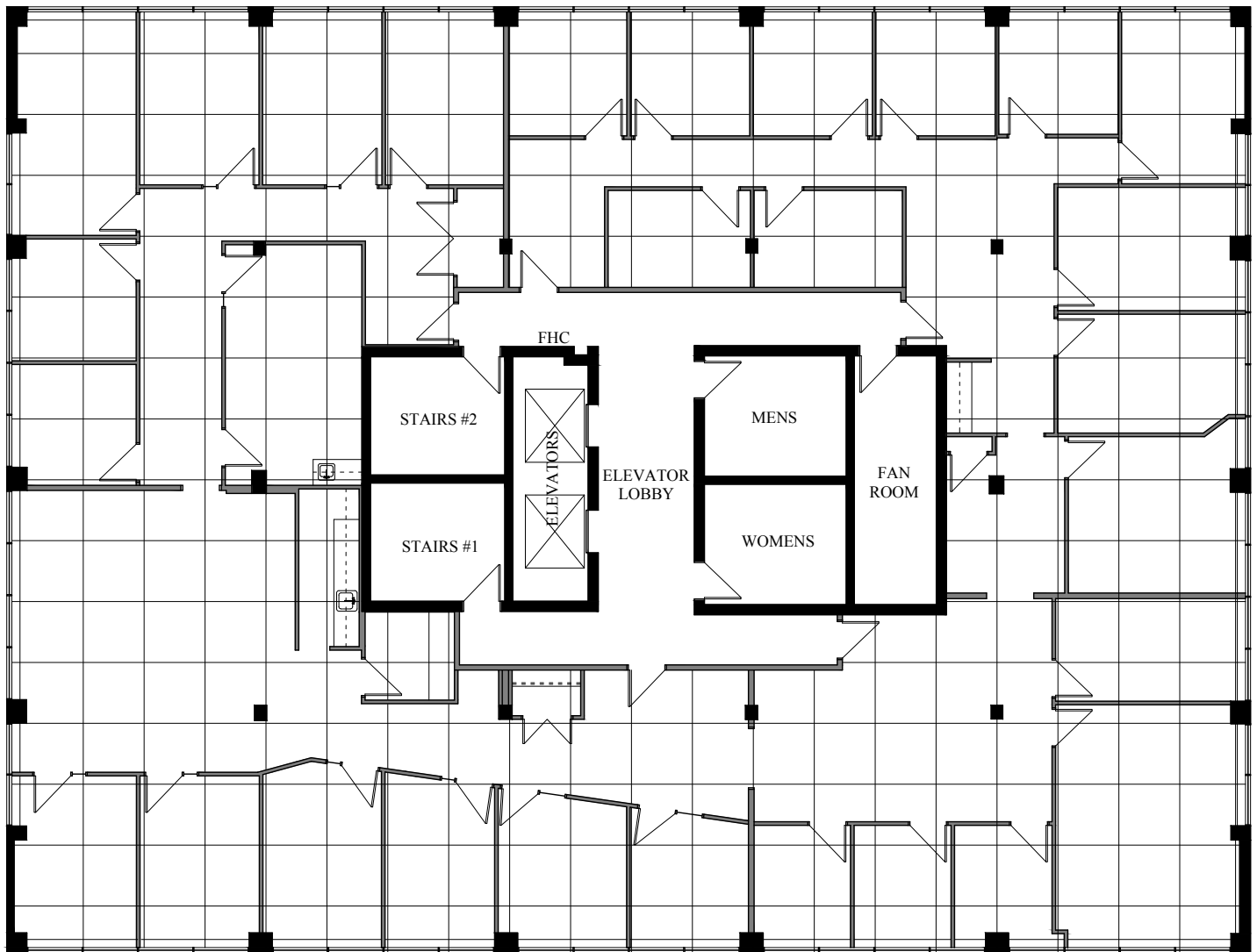
Liam Kunder-Markhauser
Sales Representative
D +1 613 696 2731
liam.markhauser@avisonyoung.com

Floor Plan

Suite 800

For Lease
280 Albert Street
Ottawa, ON

Suite 800 = +/- 2,363sf



Floorplan not to scale

David A. MacLeod
Sales Representative
D +1 613 696 2764
david.macleod@avisonyoung.com

Giorgio DiNardo
Sales Representative
D +1 613 696 2763
giorgio.dinardo@avisonyoung.com

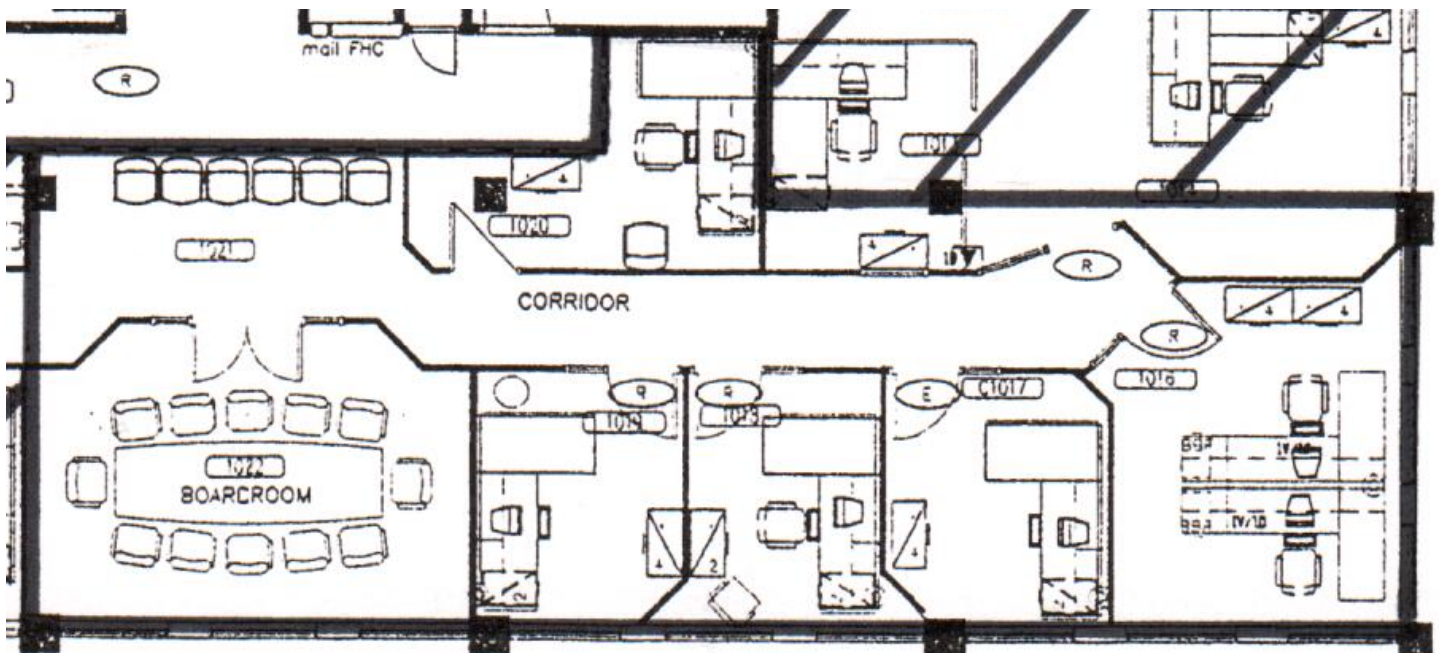
Liam Kunder-Markhauser
Sales Representative
D +1 613 696 2731
liam.markhauser@avisonyoung.com

Floor Plan

Suite 1002

For Lease
280 Albert Street
Ottawa, ON

Suite 1002 = +/- 2,498 sf



Floorplan not to scale

David A. MacLeod
Sales Representative
D +1 613 696 2764
david.macleod@avisonyoung.com

Giorgio DiNardo
Sales Representative
D +1 613 696 2763
giorgio.dinardo@avisonyoung.com

Liam Kunder-Markhauser
Sales Representative
D +1 613 696 2731
liam.markhauser@avisonyoung.com

Map

For Lease

280 Albert Street
Ottawa, ON



Location:

Situated in the downtown core in close proximity to a variety of amenities within walking distance such as; Rideau Centre & Byward Market.

David A. MacLeod
Sales Representative
D +1 613 696 2764
david.macleod@avisonyoung.com

Giorgio DiNardo
Sales Representative
D +1 613 696 2763
giorgio.dinardo@avisonyoung.com

Liam Kunder-Markhauser
Sales Representative
D +1 613 696 2731
liam.markhauser@avisonyoung.com