

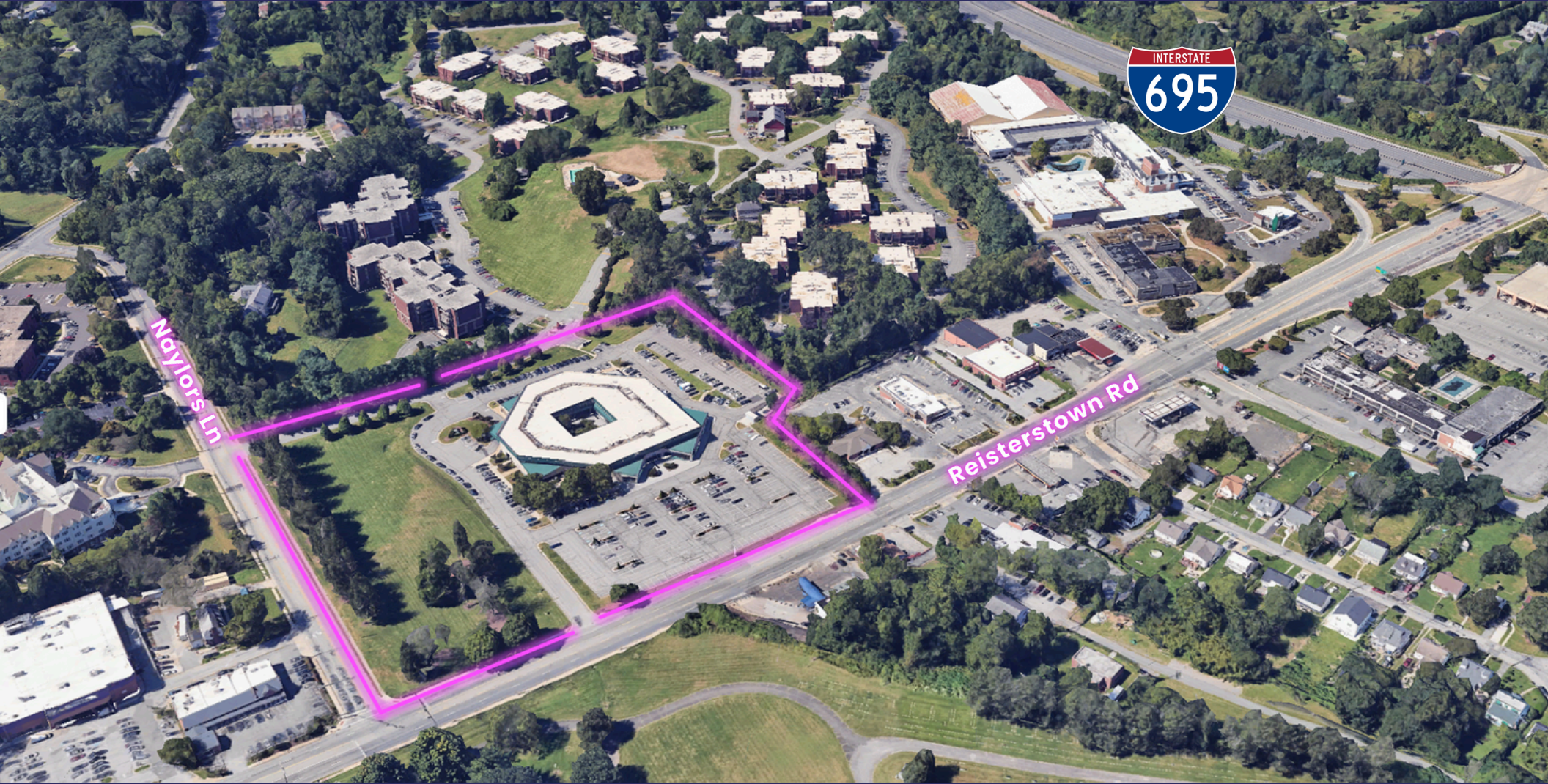


Pomona Square

Professional Office Space: For Lease
1700 Reisterstown Road, Pikesville, MD 21208

[Drone Video](#)

Aerial



Pomona Square | 1700 Reisterstown Road, Pikesville, MD 21208

Retail Map

Pomona Square

1700 Reisterstown Road,
Pikesville, MD 21208

TRANSFORM PIKESVILLE ARMORY





Aerial Map

Pomona Square
1700 Reisterstown Road,
Pikesville, MD 21208

Highlights

- Join Sinai Hospital and other professional offices
- Just inside I-685; easy access from Reisterstown Road
- Abundant parking with 24 x 7 access
- On-site building engineer and recent renovations
- Newly carpeted and freshly painted suites
- Custom buildouts available
- Suites with abundant natural light
- Interior courtyard for quiet space or lunch!

Lease Type

- Full Service with janitorial
- Tenants pay their own utilities & internet

Available Spaces

1. **Suite 219:** 1,800 SF
2. **Suite 230:** 2,309 SF
3. **Suite 237:** 2,183 SF

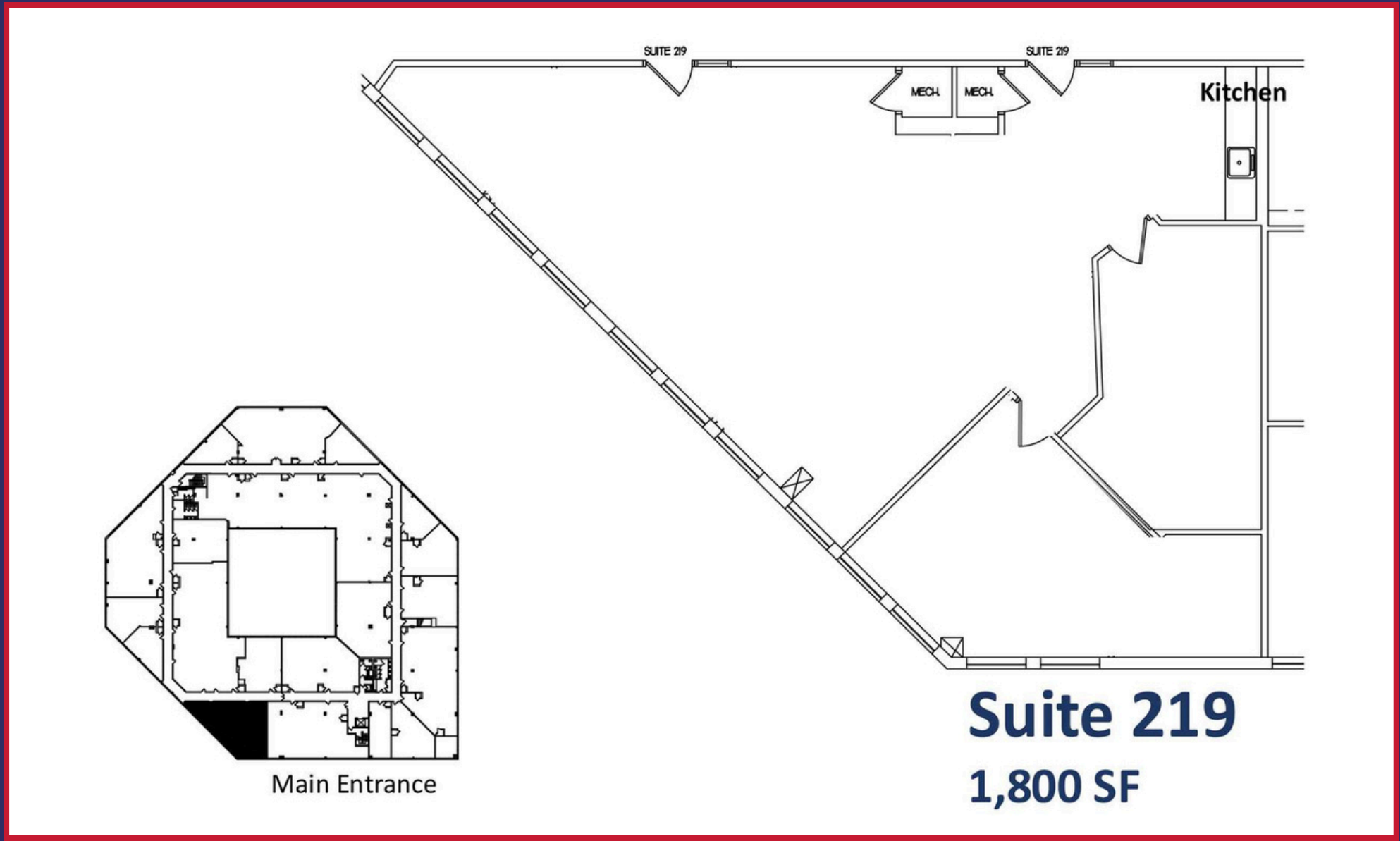
Gilbert R. Trout

C: 410.960.5848 | O: 443.921.9332

gtrout@troutdaniel.com

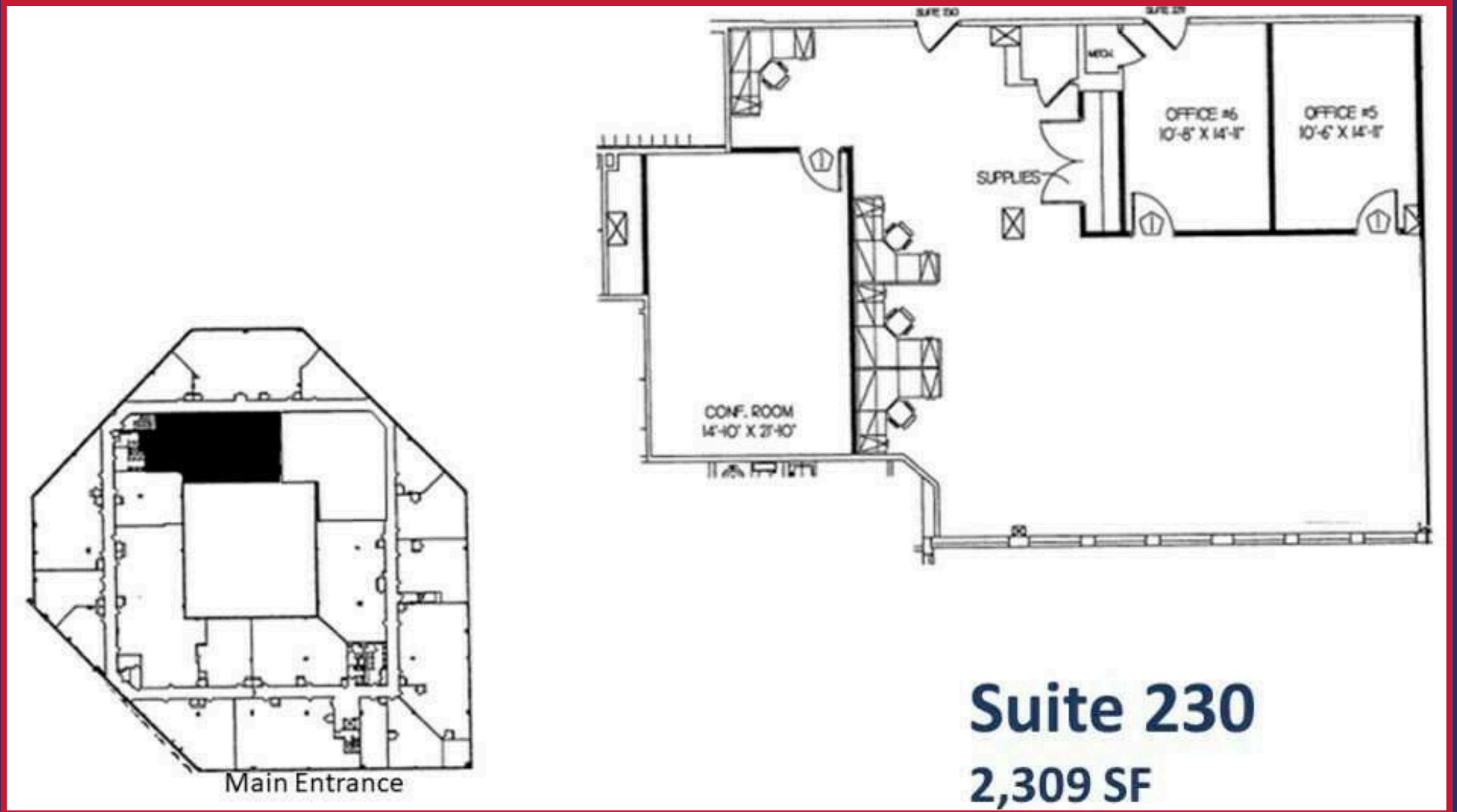
TD&A
TROUT DANIEL & ASSOCIATES
BUY. SELL. LEASE. ADVISE.

Floor Plan – Suite 219

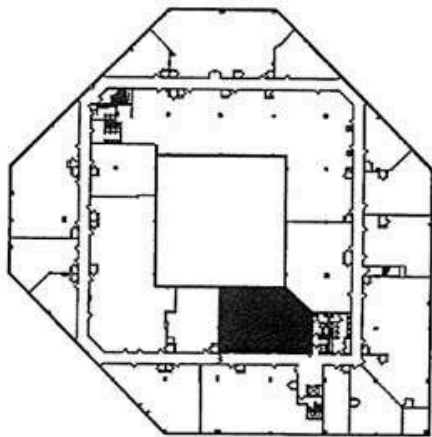


Suite 219
1,800 SF

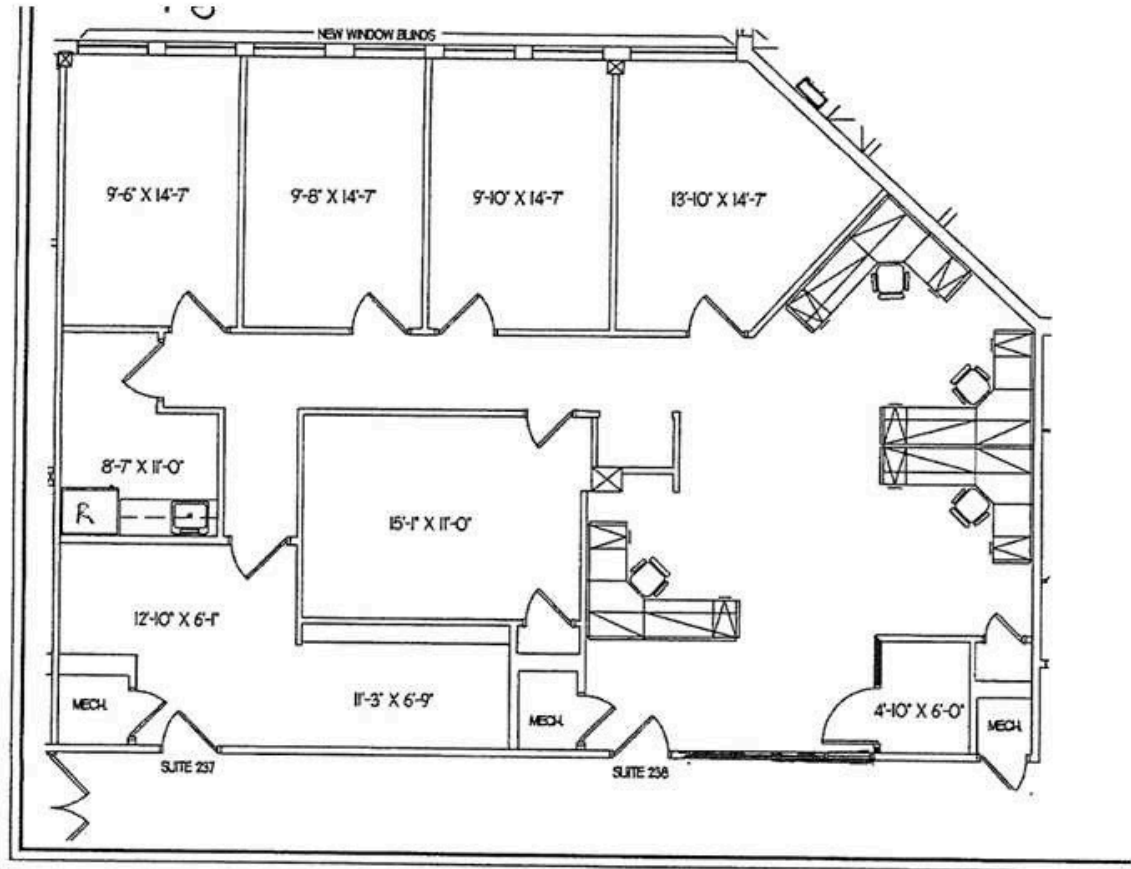
Floor Plan – Suite 230



Floor Plan – Suite 237



Main Entrance



Suite 237
2,183 SF

Demographics

Radius 1 mile 3 miles 5 miles


Total Population

 10,007 95,484 261,403

Total Households

 5,025 40,021 103,628

Average Household Income

 \$66,919 \$77,962 \$76,502



Pomona Square

1700 Reisterstown Road,
Pikesville, MD 21208



Contact Us

**30 E. Padonia Road, Suite
504 Timonium, MD 21093**

Visit Us

troutdaniel.com

Call Us

410.435 .4004

Gilbert R. Trout

Investment Real Estate

 C: 410.960.5848 | O: 443.921.9332

 gtrout@troutdaniel.com

The information contained in this marketing brochure has been obtained from sources we believe to be reliable; however, Trout Daniel & Associates LLC has not verified, and will not verify any of the information contained herein, nor has Trout Daniel & Associates LLC conducted any investigation regarding these matters and makes no warranty or representation whatsoever regarding the accuracy or completeness of the information provided. An agent indicated by an asterisk (*) has a direct or indirect ownership interest in this property.