

STONE HAVEN BUSINESS PARK

10600 - 10608 Trademark Parkway & 9480 Utica Avenue
Rancho Cucamonga, CA 91730



Current
Available
Sub-Lease
Office Space
in
Stone Haven
Business Park

Great Business Park Environment:

- Multi-Tenant Office / Flex Spaces
- Building and Monument Signs Available
- Move-In Ready Suites
- Up to 4:1,000 Parking on Select Units
- Easy Access to Interstate 10 and 15 Freeways
- Near LA-Ontario International Airport, Ontario Mills Mall, and Victoria Gardens

FOR LEASING INFORMATION CONTACT:

Carol D. Plowman
BRE License # 00849369
909-373-2905

Danielle Parker
BRE License # 01927503
909-373-2906

3535 Inland Empire Blvd
Ontario, CA 91764

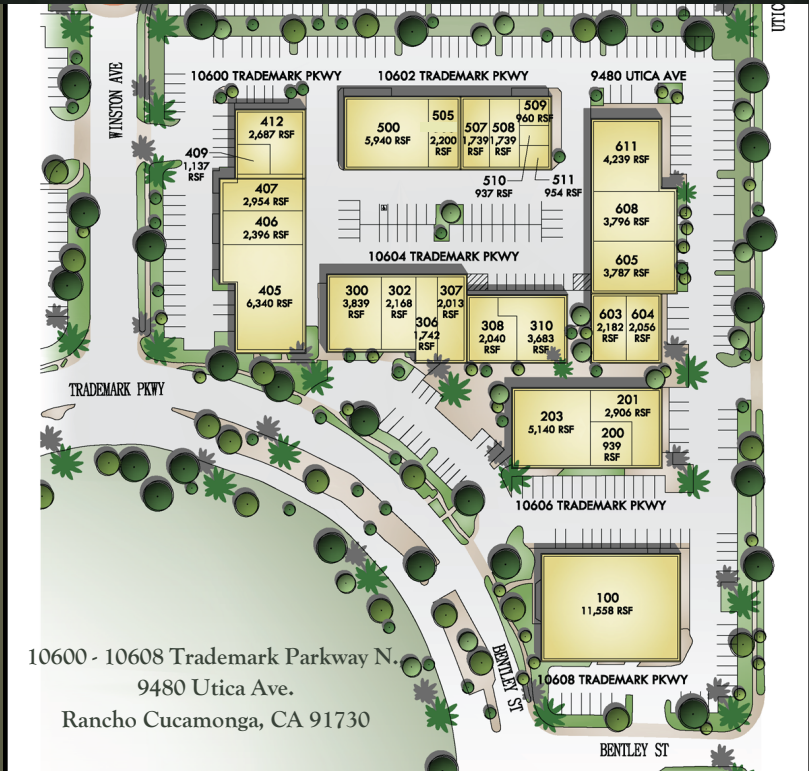


Corporate ID# 00976995



STONE HAVEN BUSINESS PARK

Available
Office Space
in
Stone Haven
Business Park



10600 - 10608 Trademark Parkway N.
9480 Utica Ave.
Rancho Cucamonga, CA 91730

FOR LEASING
INFORMATION
CONTACT:

LEE & ASSOCIATES
COMMERCIAL REAL ESTATE SERVICES

Corporate ID# 00976995

Carol D. Plowman
BRE License # 00849369
909-373-2905

Danielle Parker
BRE License # 01927503
909-373-2906

3535 Inland Empire Blvd
Ontario, CA 91764

AVAILABILITIES:

STREET ADDRESS	SUITE	±SF	RATE / SF	AVAILABILITY	MASTER LEASE EXP.
10600 Trademark Pkwy	407	2,954	\$1.70	Call to Discuss	Nov. 30 th , 2026
9480 Utica Avenue	605	3,787	\$1.75	7/30/2026	April 30 th , 2028
9480 Utica Avenue	611 A	1,682	\$1.65	7/30/2026	April 30 th , 2028

CAM Fee:

Suite 407

\$0.14 / SF

Suite 605

\$0.10 / SF

Suite 611A

\$0.10 / SF

CIP REAL ESTATE

STONE HAVEN BUSINESS PARK

10600
Trademark
Parkway
Suite 407

FOR LEASING
INFORMATION
CONTACT:

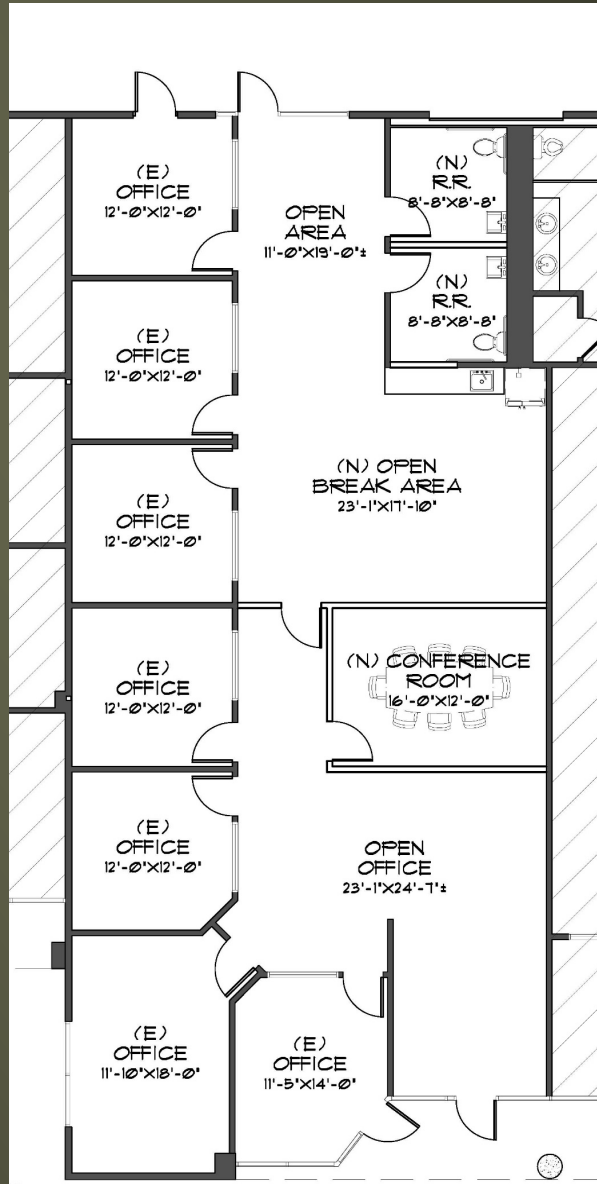


Corporate ID# 00976995

Carol D. Plowman
BRE License # 00849369
909-373-2905

Danielle Parker
BRE License # 01927503
909-373-2906

3535 Inland Empire Blvd
Ontario, CA 91764



Suite 407
± 2,954 SF



STONE HAVEN

BUSINESS PARK

9480
Utica
Avenue
Suite 605

FOR LEASING
INFORMATION
CONTACT:

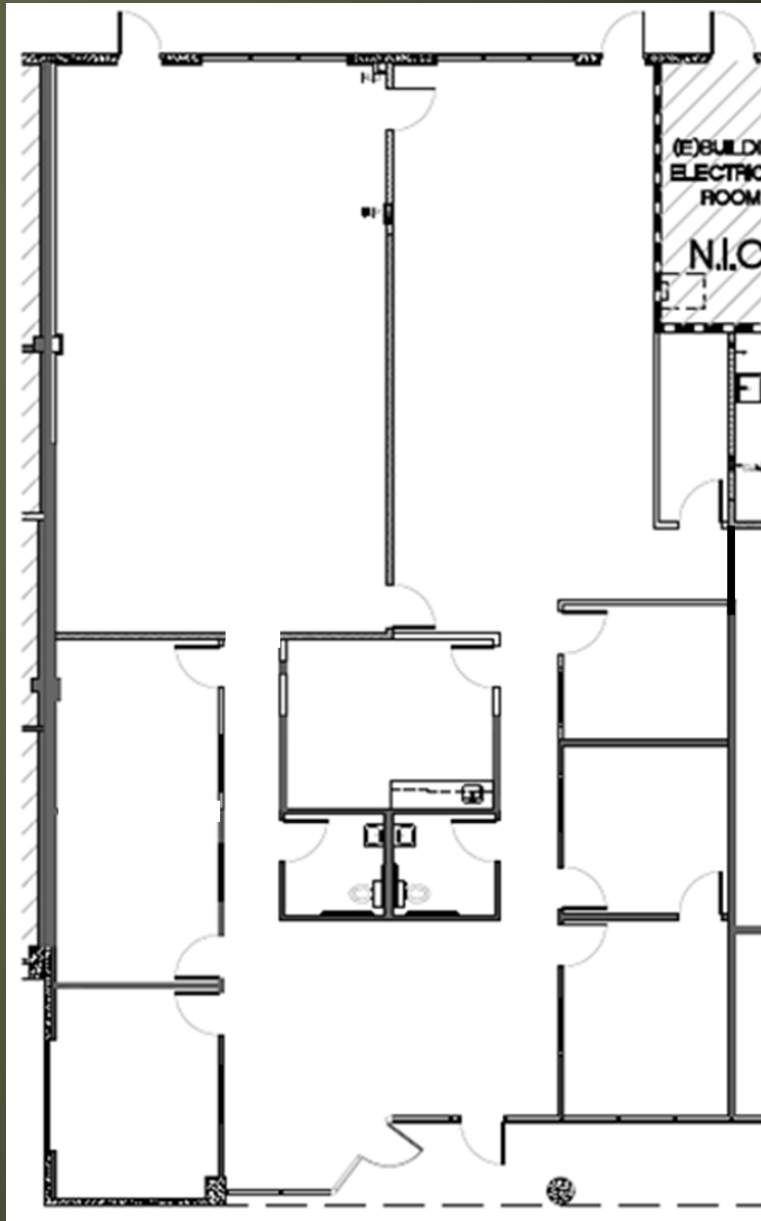


Corporate ID# 00976995

Carol D. Plowman
BRE License # 00849369
909-373-2905

Danielle Parker
BRE License # 01927503
909-373-2906

3535 Inland Empire Blvd
Ontario, CA 91764



Suite 605
± 3,787 SF

Available
Sub-Lease
Office Space

9480
Utica Avenue
Suite 611 A

FOR LEASING
INFORMATION
CONTACT:



Corporate ID# 00976995

Carol D. Plowman
BRE License # 00849369
909-373-2905

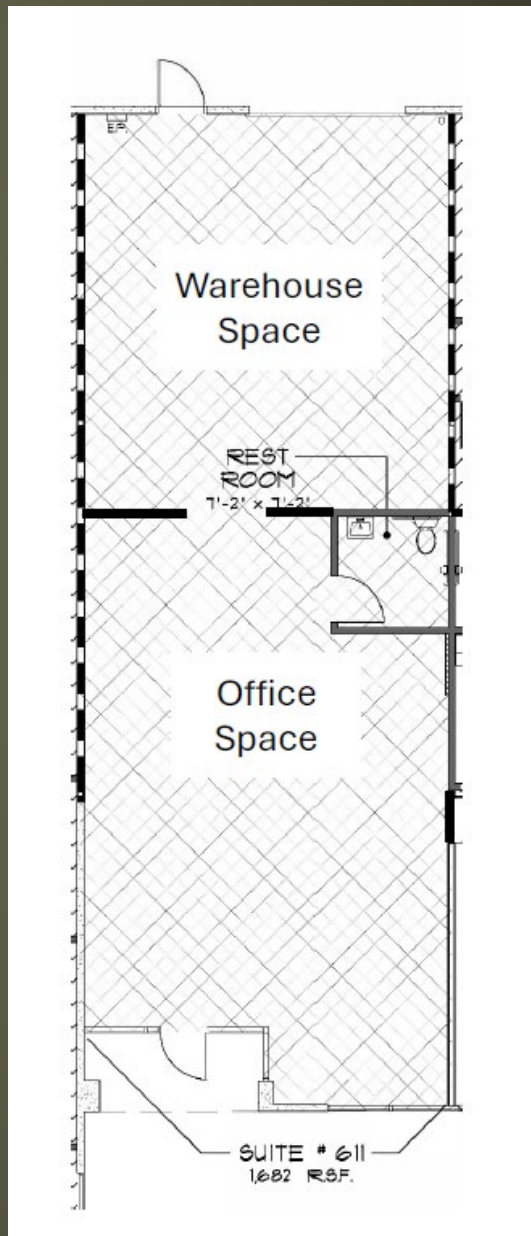
Danielle Parker
BRE License # 01927503
909-373-2906

3535 Inland Empire Blvd
Ontario, CA 91764



STONE HAVEN

BUSINESS PARK



Suite 611 A
± 1,682 RSF