



PROPERTY DESCRIPTION

Introducing 6032 Farcenda Pl, a prime office property available for lease in Suntree. This space is ideal for office, or healthcare use. Its strategic layout includes ample parking for employees and clients, with a convenient location near major thoroughfares. Elevate your brand and operations in this sought-after commercial space.

LOCATION DESCRIPTION

Prominent Wickham Road Building Frontage
 Iconic Spanish Architecture on Wickham Road Just north of Pineda Causeway
 Convenient to I-95
 Minutes from Beaches
 +/- 60 miles to MCO

OFFERING SUMMARY

Lease Rate:	\$25 SF/yr (\$6.78/sf NNN)
Number of Units:	2
Available SF:	2,580 SF
Lot Size:	0.71 Acres
Building Size:	5,846 SF

DEMOGRAPHICS

	1 MILE	3 MILES	5 MILES
Total Households	1,764	15,398	43,002
Total Population	3,959	36,583	99,689
Average HH Income	\$169,511	\$135,111	\$120,791

JEFFERY T. ROBISON, CCIM

President | Broker
 321.722.0707 x13
 Jeff@TeamLBR.com



Additional Photos



CasaBella
For Lease



JEFFERY T. ROBISON, CCIM

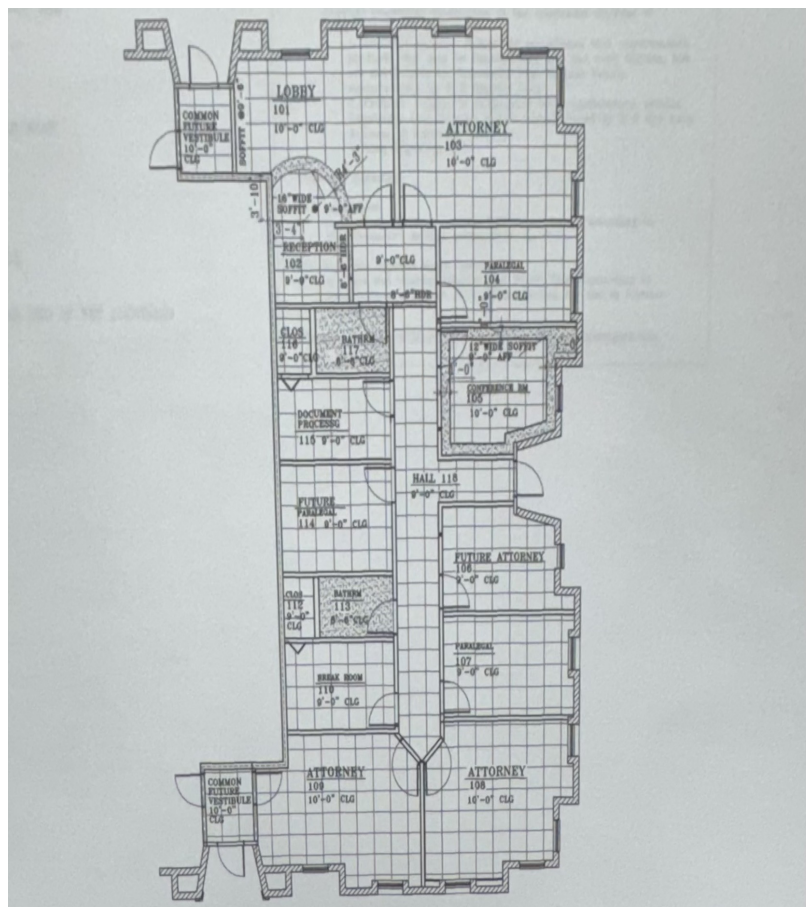
President | Broker
321.722.0707 x13
Jeff@TeamLBR.com



Information contained herein has been obtained through sources deemed reliable but cannot be guaranteed as to its accuracy. A purchaser or lessee is expected to verify all information to his/her own satisfaction. Zoning information subject to change and not warranted. Always confirm current requirements with local governing agencies.

Additional Photos

CasaBella
For Lease



JEFFERY T. ROBISON, CCIM

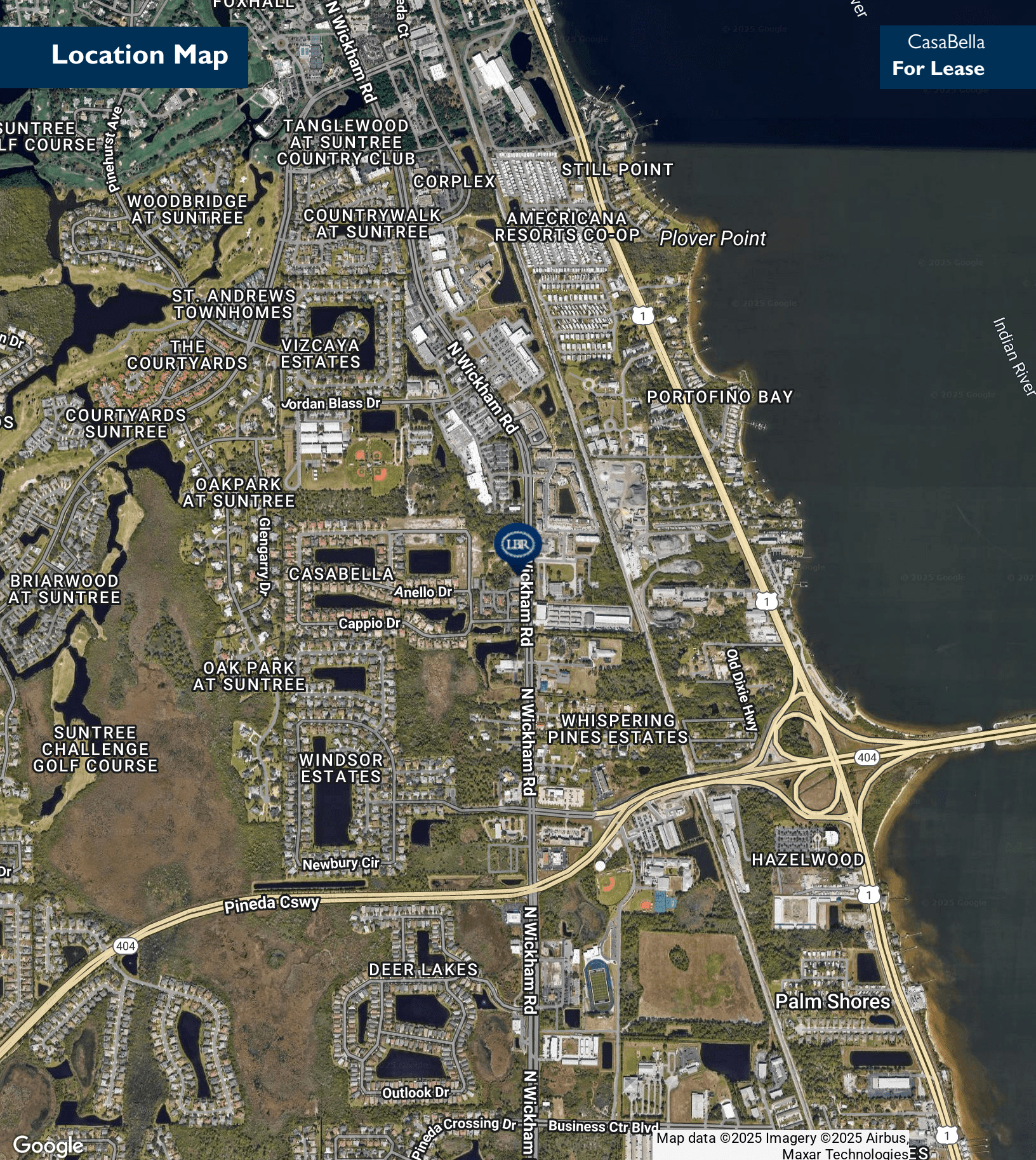
President | Broker
321.722.0707 x13
Jeff@TeamLBR.com



Information contained herein has been obtained through sources deemed reliable but cannot be guaranteed as to its accuracy. A purchaser or lessee is expected to verify all information to his/her own satisfaction. Zoning information subject to change and not warranted. Always confirm current requirements with local governing agencies.

Location Map

CasaBella
For Lease



JEFFERY T. ROBISON, CCIM

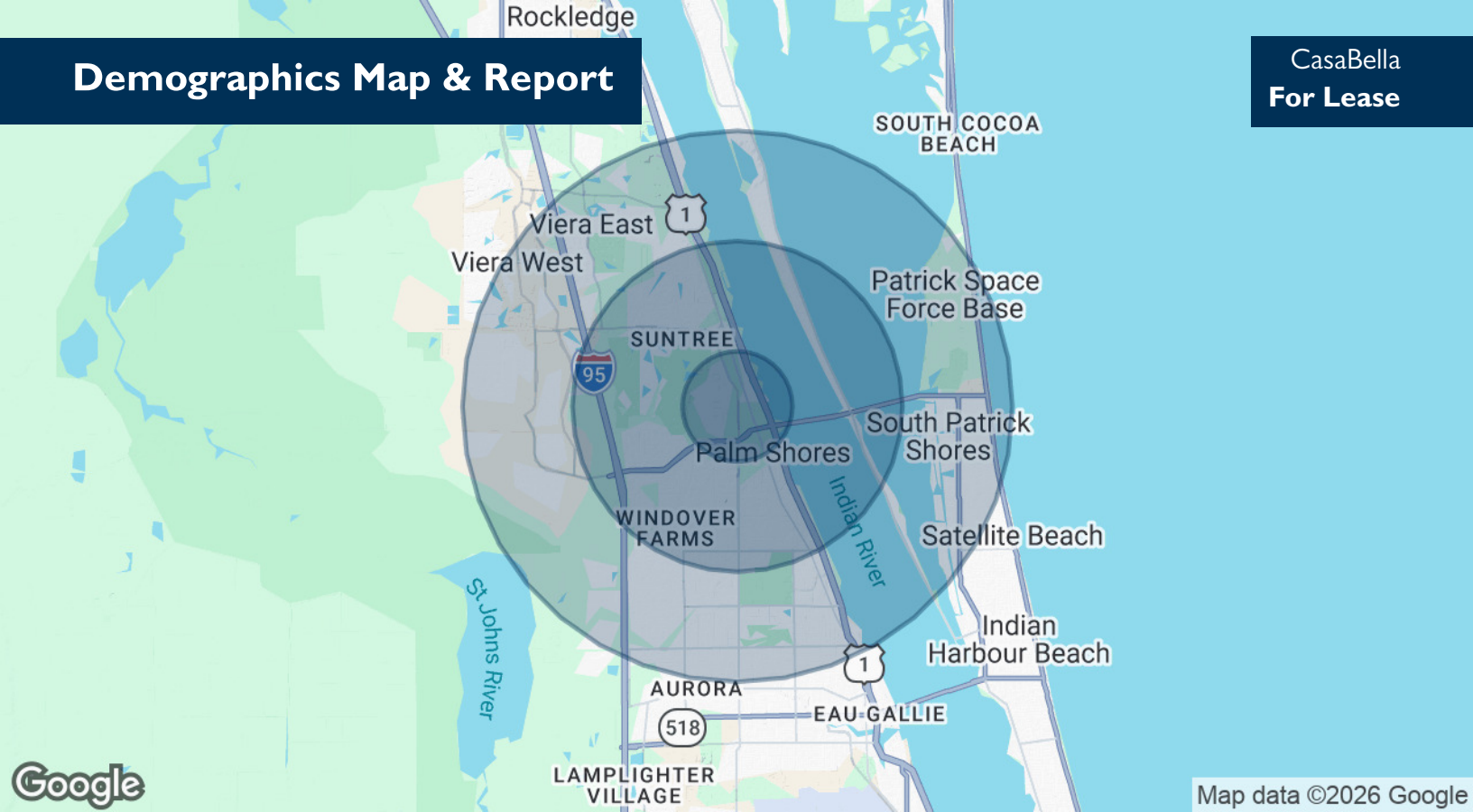
President | Broker
321.722.0707 x13
Jeff@TeamLBR.com



Information contained herein has been obtained through sources deemed reliable but cannot be guaranteed as to its accuracy. A purchaser or lessee is expected to verify all information to his/her own satisfaction. Zoning information subject to change and not warranted. Always confirm current requirements with local governing agencies.

Demographics Map & Report

CasaBella
For Lease



POPULATION

1 MILE

3 MILES

5 MILES

Total Population	3,959	36,583	99,689
Average Age	53	48	47
Average Age (Male)	52	47	46
Average Age (Female)	54	49	48

HOUSEHOLDS & INCOME

1 MILE

3 MILES

5 MILES

Total Households	1,764	15,398	43,002
# of Persons per HH	2.2	2.4	2.3
Average HH Income	\$169,511	\$135,111	\$120,791
Average House Value	\$557,218	\$496,562	\$463,506

2020 American Community Survey (ACS)

JEFFERY T. ROBISON, CCIM

President | Broker
321.722.0707 x13
Jeff@TeamLBR.com



Information contained herein has been obtained through sources deemed reliable but cannot be guaranteed as to its accuracy. A purchaser or lessee is expected to verify all information to his/her own satisfaction. Zoning information subject to change and not warranted. Always confirm current requirements with local governing agencies.