

RETAIL SPACES FOR LEASE AT
RYDER COLONNADE

2333 PONCE DE LEON BLVD | CORAL GABLES, FL 33134



Property OVERVIEW

- Prime mixed-use property at the corner of Miracle Mile & Ponce de Leon Blvd, Coral Gables' "Main & Main" intersection
- Ground-floor retail and restaurant spaces with Aragon Ave and Miracle Mile frontage
 - 2 suites available:
 - » Suite 100: ± 4,806 SF
 - » Suite R-10: ± 9,301 SF
 - Divisions considered
- Connected to Hotel Colonnade, a Marriott Autograph Collection property with premier dining and amenities
- 98 Walk Score with direct access to nearby offices, restaurants, and shops
- 15 minutes to Brickell, Coconut Grove, and Miami International Airport
- 592-space parking garage with valet and self parking
- ~250,000 people with an average household income of \$125K+ within a 3-mile radius



Three-Mile DEMOGRAPHICS

249,766
POPULATION

100,255
HOUSEHOLDS

\$125,182
AVERAGE HHI

273,447
DAYTIME POPULATION

18,977
BUSINESSES

STEPS FROM



MIRACLE MILE



THE PLAZA CORAL GABLES



GIRALDA ROW

Although information has been obtained from sources deemed reliable, JLL does not make any guarantees, warranties or representations, express or implied, as to the completeness or accuracy as to the information contained herein. Any projections, opinions, assumptions or estimates used are for example only. There may be differences between projected and actual results, and those differences may be material. JLL does not accept any liability for any loss or damage suffered by any party resulting from reliance on this information. If the recipient of this information has signed a confidentiality agreement with JLL regarding this matter, this information is subject to the terms of that agreement. ©2025. Jones Lang LaSalle Brokerage, Inc. All rights reserved.

CORAL GABLES

AREA RETAIL

National & Global Chains

01. Starbucks
02. The Cheesecake Factory
03. Subway
04. Domino's Pizza
05. Morton's The Steakhouse
06. Ruth's Chris Steak House
07. Fogo de Chão
08. Benihana
09. Jimmy John's
10. Ben & Jerry's
11. Smoothie King
12. Anthony's Coal Fired Pizza & Wings

High-Growth Chains

13. Sweetgreen
14. Just Salad
15. Pura Vida
16. Carrot Express

Top Fitness Studios

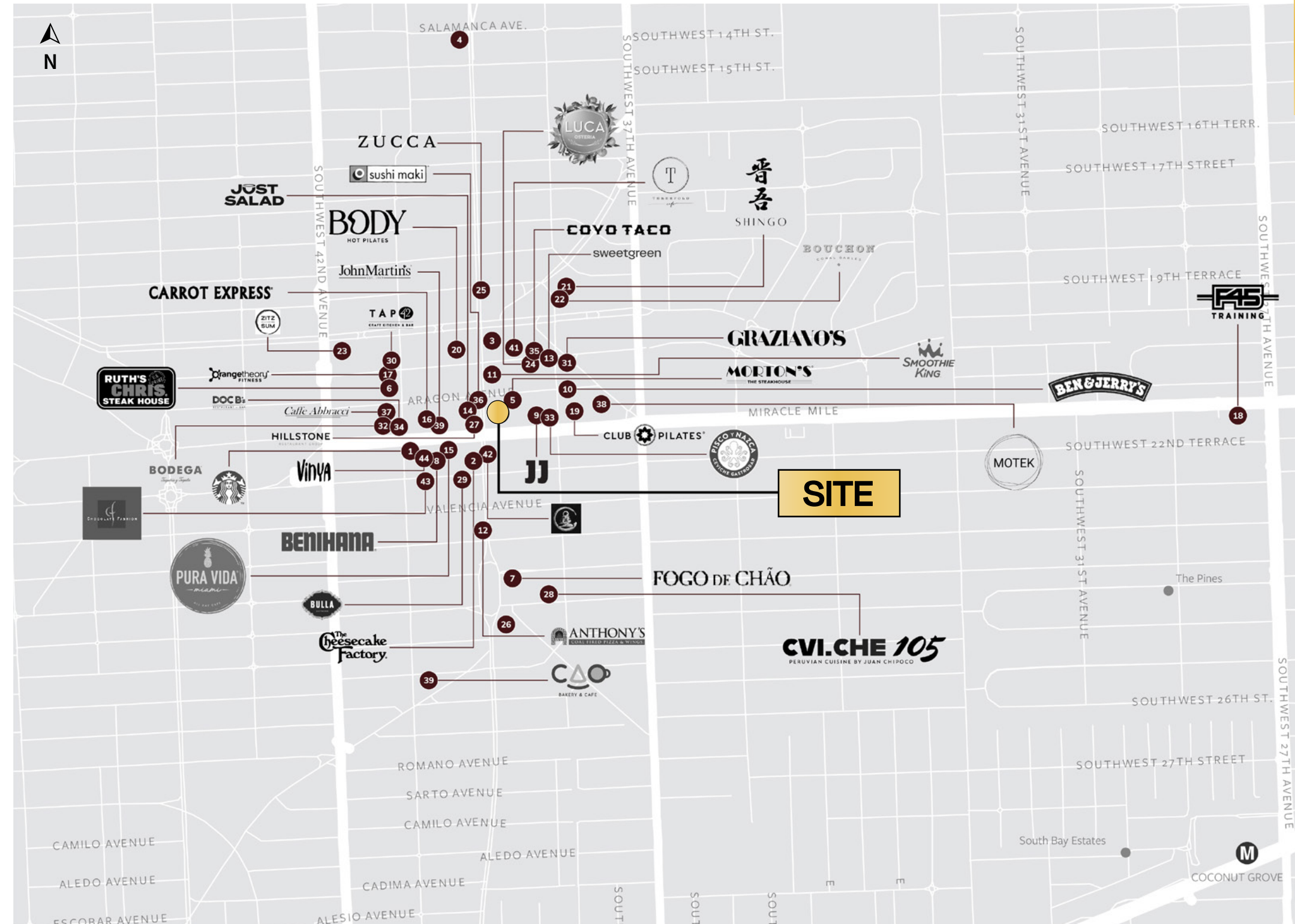
17. Orangetheory Fitness
18. F45 Training
19. Club Pilates
20. BODY Hot Pilates

Fine Dining

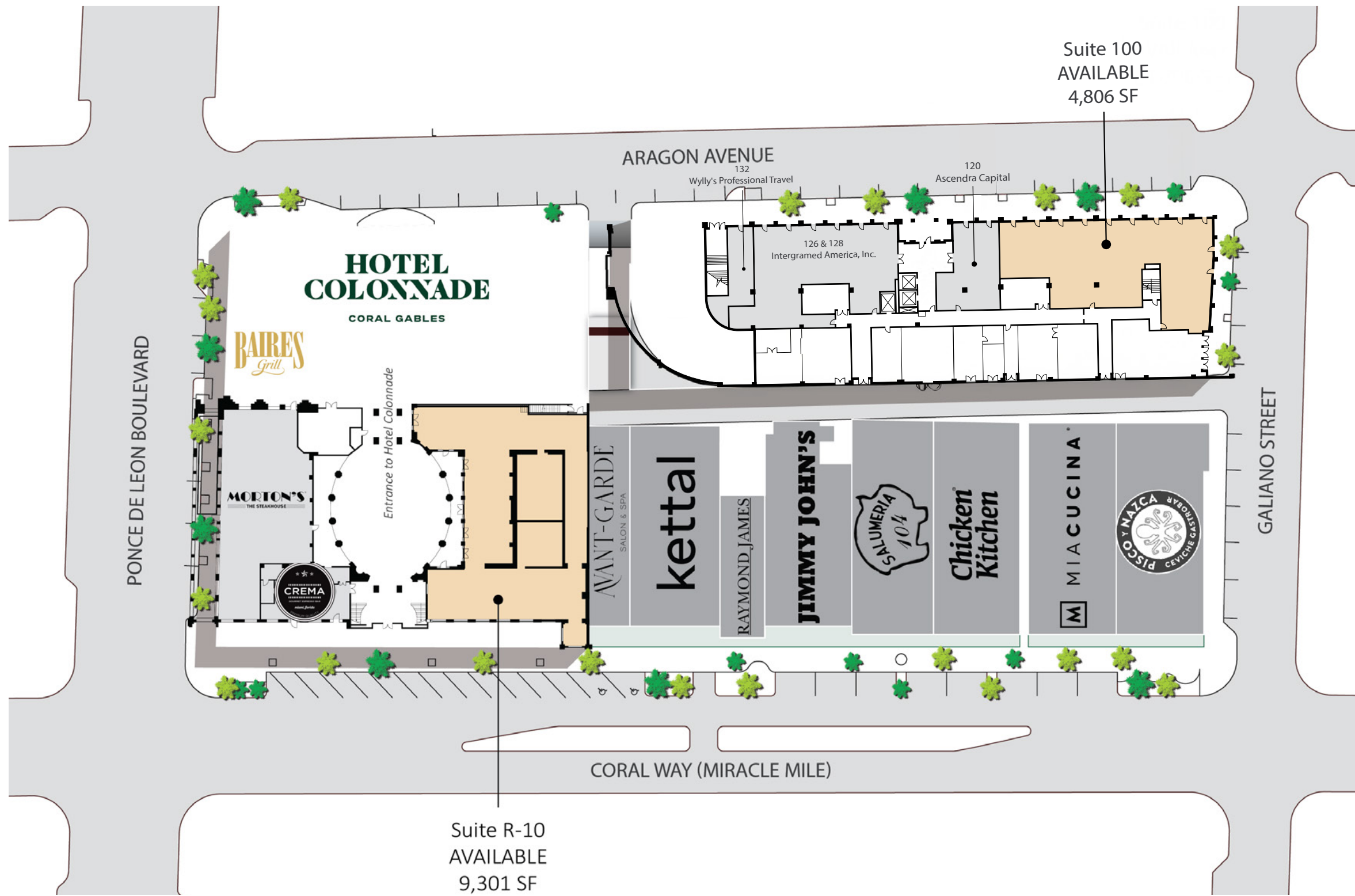
21. Shingo
22. Bouchon Bistro
23. Zitz Sum
24. Luca Osteria
25. Zucca
26. Mika

Regional & Local Favorites

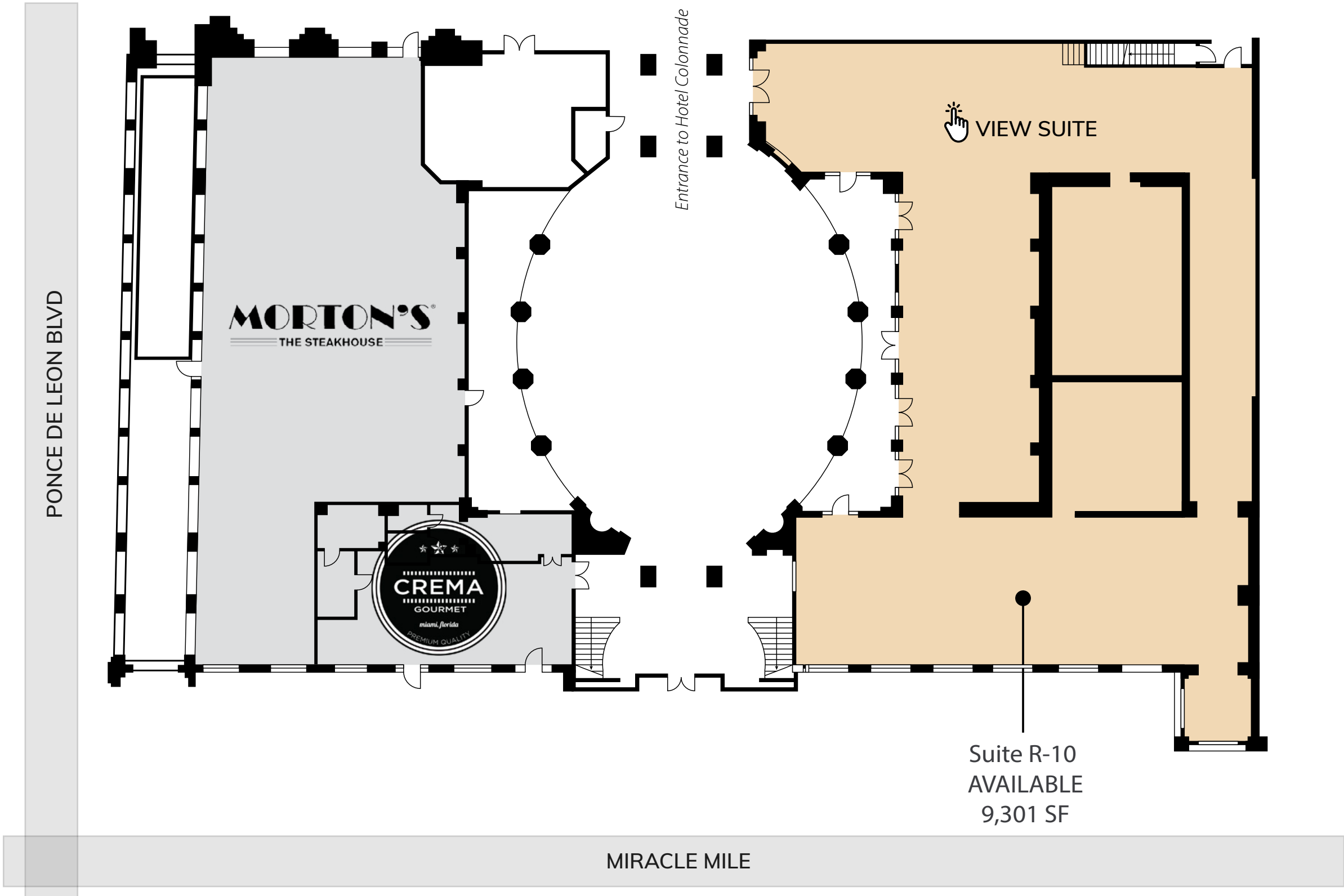
27. Hillstone Restaurant
28. CVI.CHE 105
29. Bulla Gastrobar
30. Tap 42
31. Graziano's Mercado
32. Bodega Taqueria y Tequila
33. Pisco y Nazca
34. Doc B's Restaurant + Bar
35. Coyo Taco
36. Sushi Maki
37. Caffe Abbracci
38. Motek
39. CAO Bakery & Café
40. John Martin's Irish Pub
41. Threefold Café
42. Crudos ArtHouse
43. Chocolate Fashion
44. Vinya Table

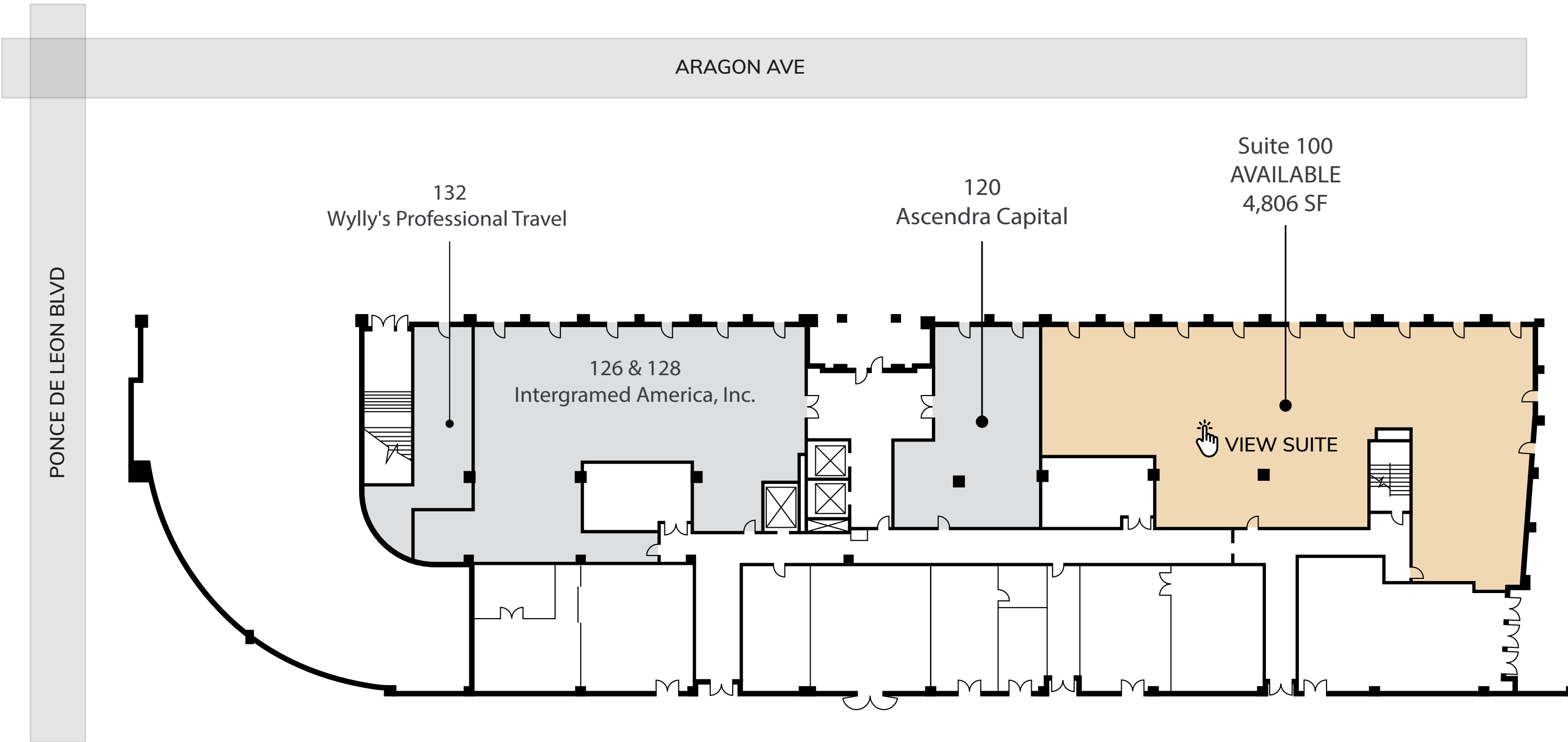


SITE PLAN



ROTUNDA SUITE





FOR MORE INFORMATION, PLEASE CONTACT:

ZACH WINKLER

zach.winkler@jll.com

+1 305 704 1333

