

# 221 N 6TH ST

Lafayette, IN 47901



## PROPERTY DESCRIPTION

Position your business in a true Lafayette landmark: the historic former Journal & Courier Building. This architecturally significant property was built in 1921 and designed by renowned architect Walter Scholer. It is also part of a nomination to the National Register of Historic Places, offering tenants a distinctive setting that blends heritage with professional presence.

Located in the heart of Lafayette, just one block north of Main Street at the prominent corner of 6th & Ferry, the building offers unmatched visibility and convenience. Step outside to a vibrant, walkable downtown filled with restaurants, cafés, shopping, and entertainment. Public transit access along a nearby bus line makes commuting easy for employees and clients alike.

This office space offers the opportunity to work in a building with history, character, and a downtown address that elevates your business.

## PROPERTY HIGHLIGHTS

- Individual office suites
- 24/7 access
- Public transportation
- Downtown
- Newly Renovated

## OFFERING SUMMARY

Lease Rate:	\$400 - 850 per month (Gross)
Number of Units:	16
Available SF:	1 - 182 SF
Lot Size:	4,348 SF
Building Size:	19,964 SF

DEMOGRAPHICS	1 MILE	2 MILES	3 MILES
Total Households	9,791	22,137	34,023
Total Population	19,929	56,245	89,061
Average HH Income	\$45,099	\$56,524	\$60,724

## JESSICA ETZLER

219.771.9412

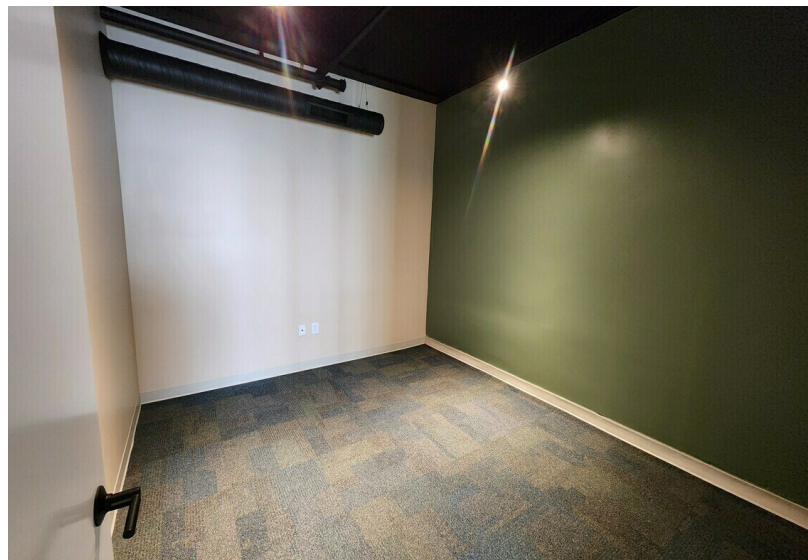
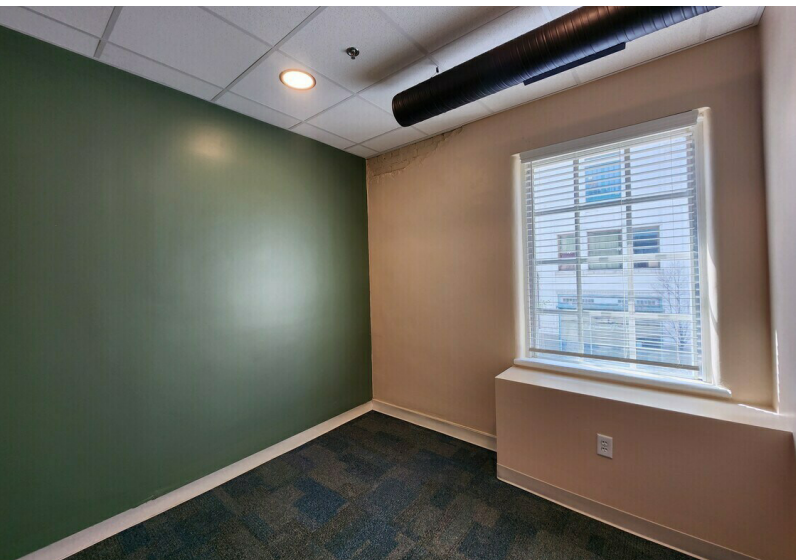
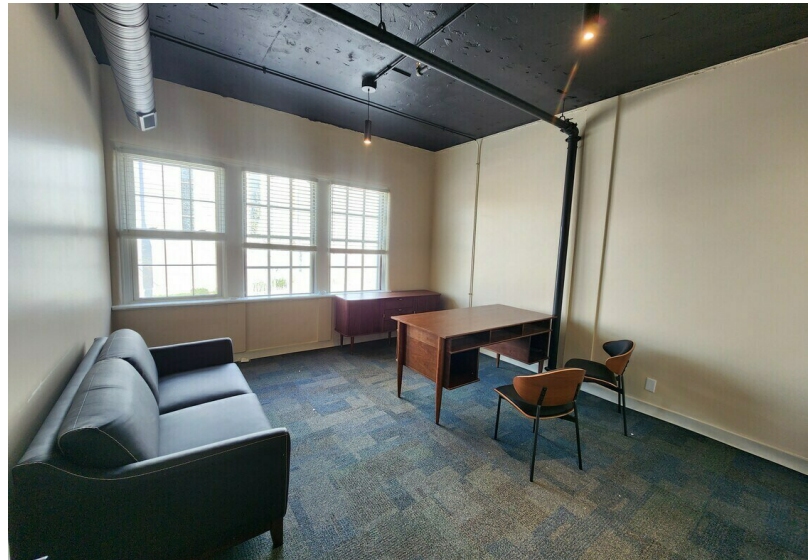
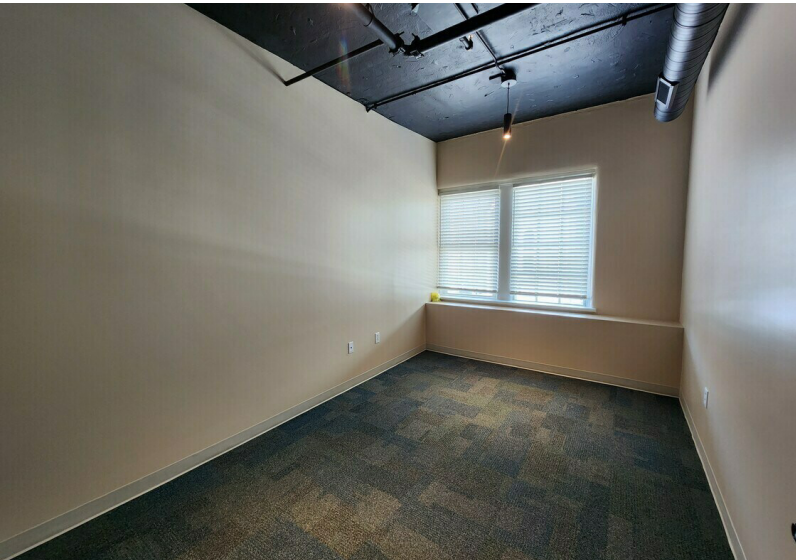
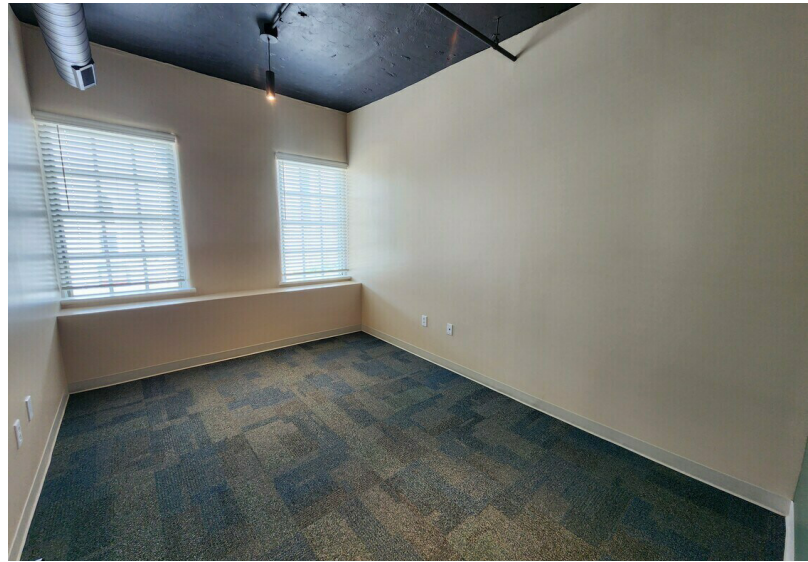
jetzler@shookpmg.com

OFFICE BUILDING FOR LEASE

# 221 N 6TH ST

Lafayette, IN 47901

**SHOOK** COMMERCIAL  
REAL ESTATE



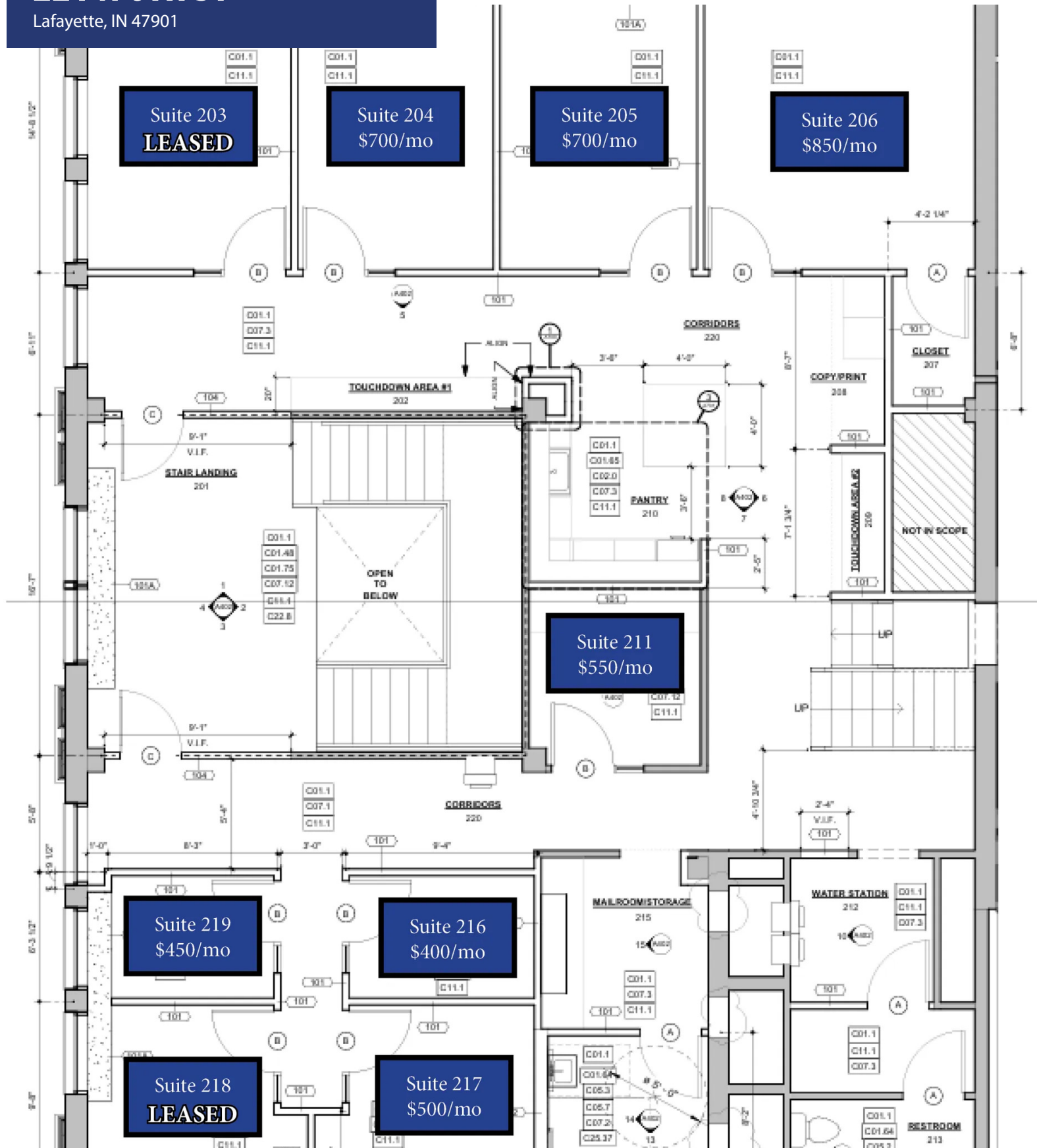
**JESSICA ETZLER**

219.771.9412

jetzler@shookpmg.com

# 221 N 6TH ST

Lafayette, IN 47901



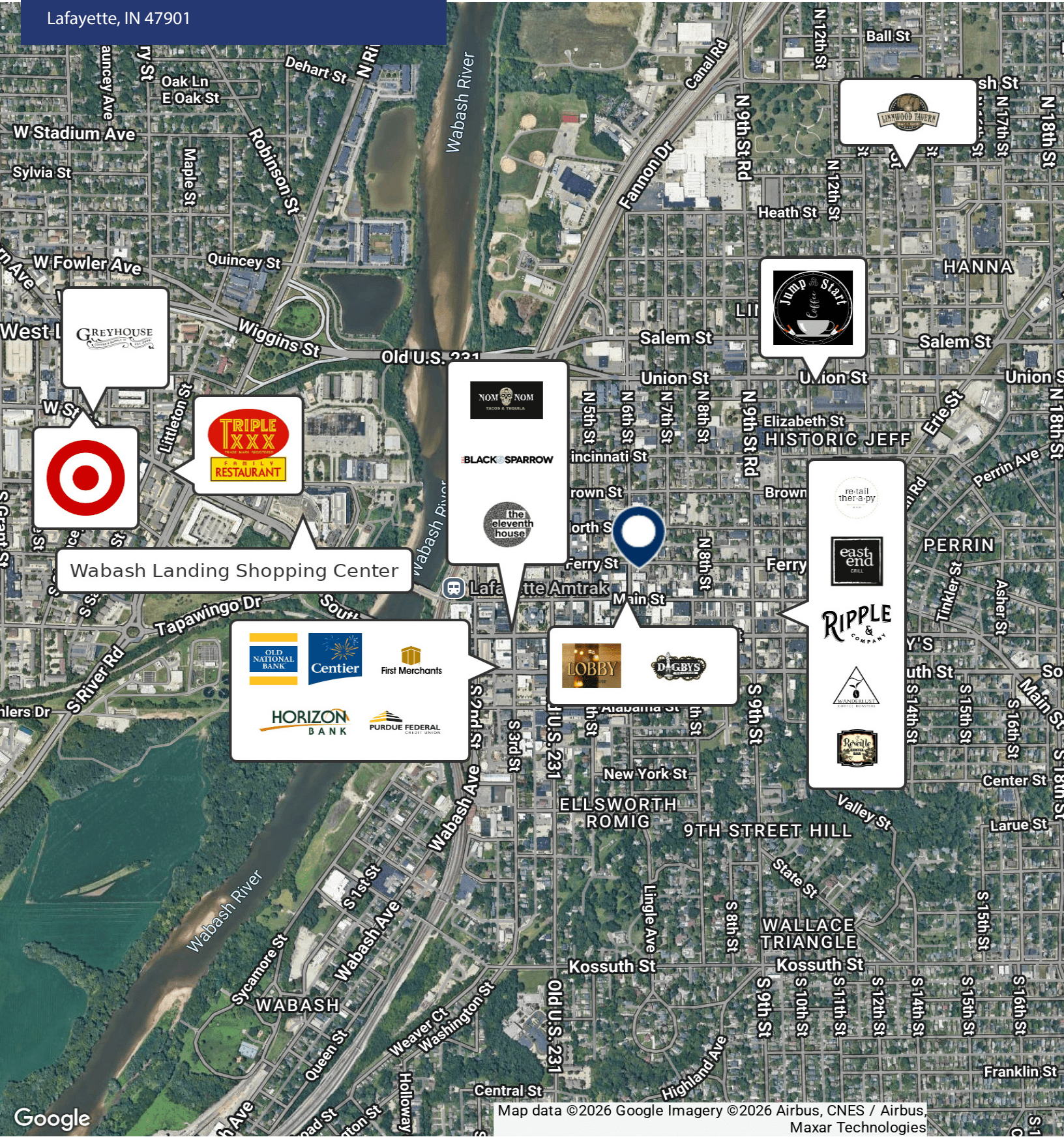
**JESSICA ETZLER**

219.771.9412

jetzler@shookpmg.com

# 221 N 6TH ST

Lafayette, IN 47901



**GREYHOUSE**  
Interior Design & Furnishings



**TRIPLE XXX**  
RESTAURANT

Wabash Landing Shopping Center

BLACK SPARROW

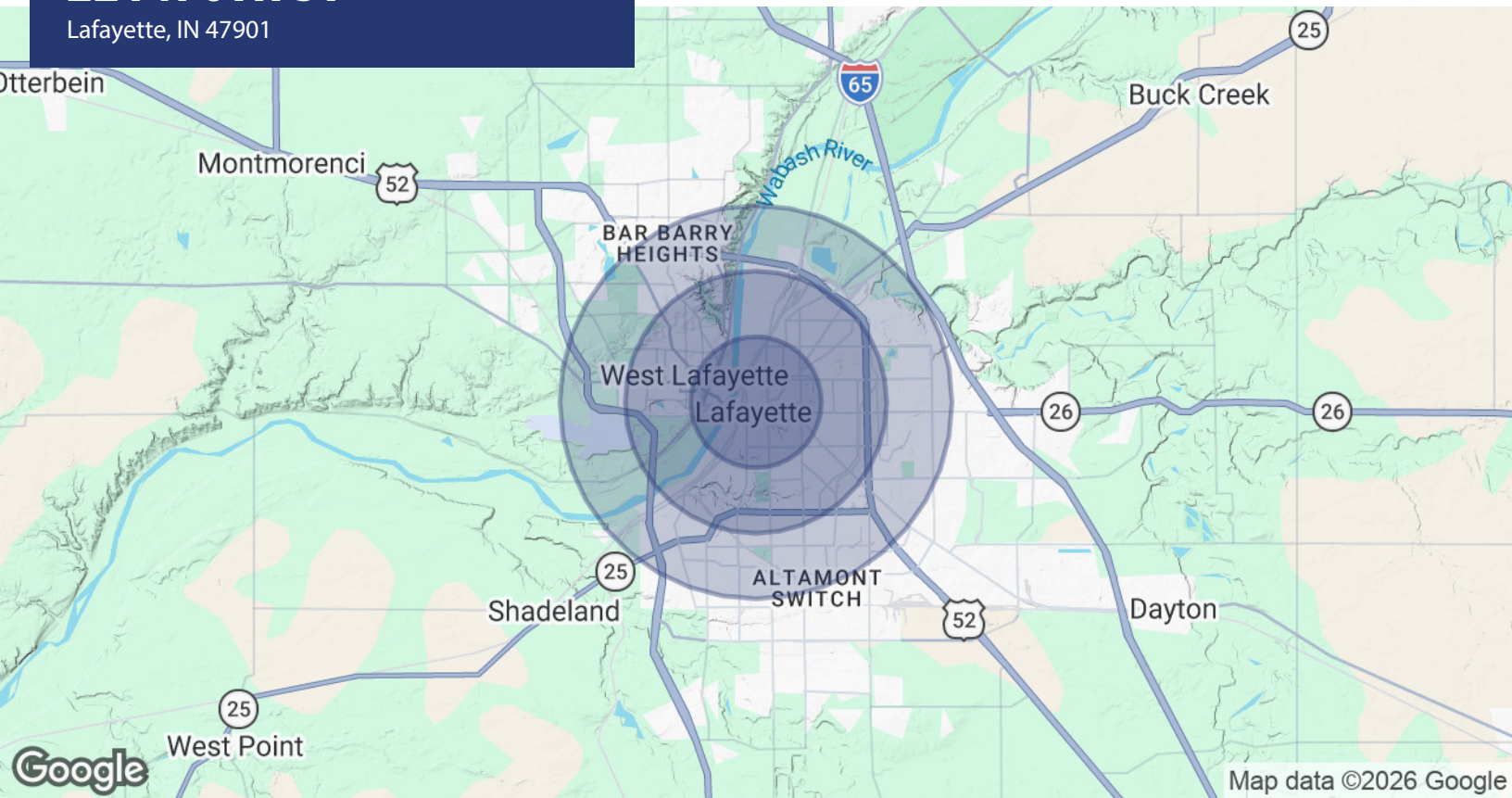
**Jump Start**  
Coffee

**RIPPLE & COMPANY**

Map data ©2026 Google Imagery ©2026 Airbus, CNES / Airbus, Maxar Technologies

# 221 N 6TH ST

Lafayette, IN 47901



POPULATION	1 MILE	2 MILES	3 MILES
Total Population	19,929	56,245	89,061
Average Age	32	32	33
Average Age (Male)	32	32	32
Average Age (Female)	33	33	34
HOUSEHOLDS & INCOME	1 MILE	2 MILES	3 MILES
Total Households	9,791	22,137	34,023
# of Persons per HH	2	2.5	2.6
Average HH Income	\$45,099	\$56,524	\$60,724
Average House Value	\$219,328	\$203,201	\$202,830

2020 American Community Survey (ACS)

**JESSICA ETZLER**

219.771.9412

jetzler@shookpmg.com