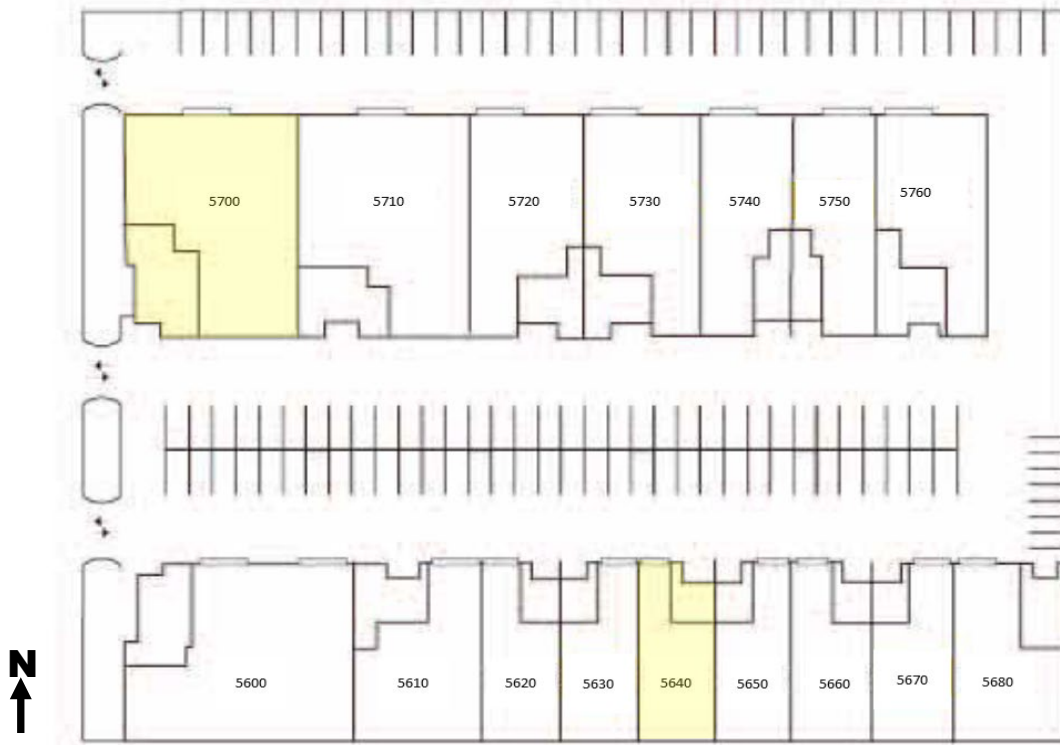


FOR LEASE

From 2,110 Sq. Ft to 6,189 Sq Ft

Industrial / Office Units

5600-5760 Ayala Avenue | Irwindale, CA



AVAILABLE SPACE

ADDRESS	SQ. FT.	OFFICE BUILDOUT	CLEARANCE	RENTAL RATE	COMMENTS
5640 Ayala Avenue	±2,110 SF	10% Office	16' Clear	\$1.59 PSF	Front Loading CAM Included
5700 Ayala Avenue	±6,006 SF	20% Office	16' Clear	\$1.49 PSF	Front & Rear Loading CAM Included

Mitch Ashwill
626.363.7868
mitch@ashwill.com
Lic# 00970525

Sean Casey
626.363.7855
sean.kc@ashwill.com
Lic# 01887121

Ashwill Associates
COMMERCIAL REAL ESTATE

www.ashwill.com

The information contained herein has been obtained from sources we deem reliable. While we have no reason to doubt its accuracy, we do not guarantee it. The prospective buyer or lessee should carefully verify all information contained herein. All measurements are approximate.