



# FIVEWHITE

Between Sixth Avenue & West Broadway

# DETAILS:

Suite 2A ————— 2,852 Square Feet

Ceiling Height ————— 15 Feet

Term ————— Negotiable

Possession ————— Immediate

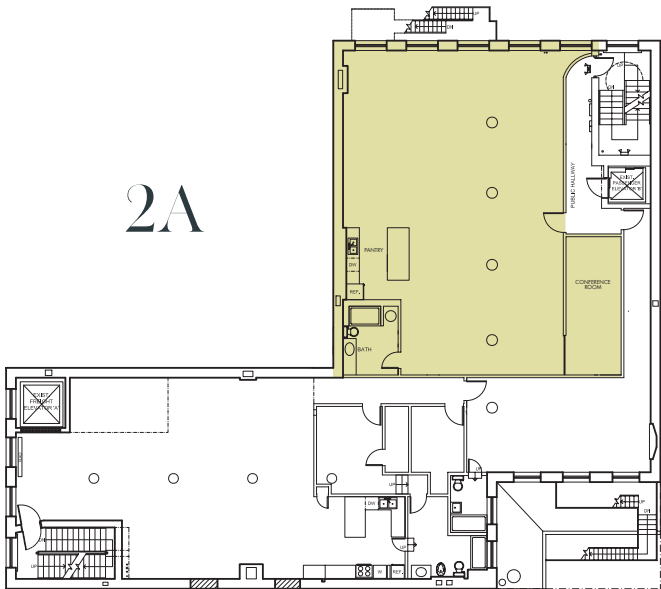
Asking Rent ————— Asking Rent



# NOTES:

- Classic Tribeca loft with oversized north facing windows
- 15' exposed tin ceilings and hardwood floors
- Open workspace with a lofted area, 1 glass conference room, and 1 glass office
- Wet pantry and private restroom
- Live/Work accepted

2A



PLEASE CONTACT:

James Costello

646.599.2391

[james@sinvin.com](mailto:james@sinvin.com)

 **SINVIN**  
COMMERCIAL REAL ESTATE & ADVISORY