

7525 Irvine Center Dr

SUITE 200

IRVINE, CA

16,209 SF

AVAILABLE
FOR SUBLEASE



CBRE

Suite 200



16,209 SF



High-End Finishes
Throughout
the Entire Space



Furniture
Available



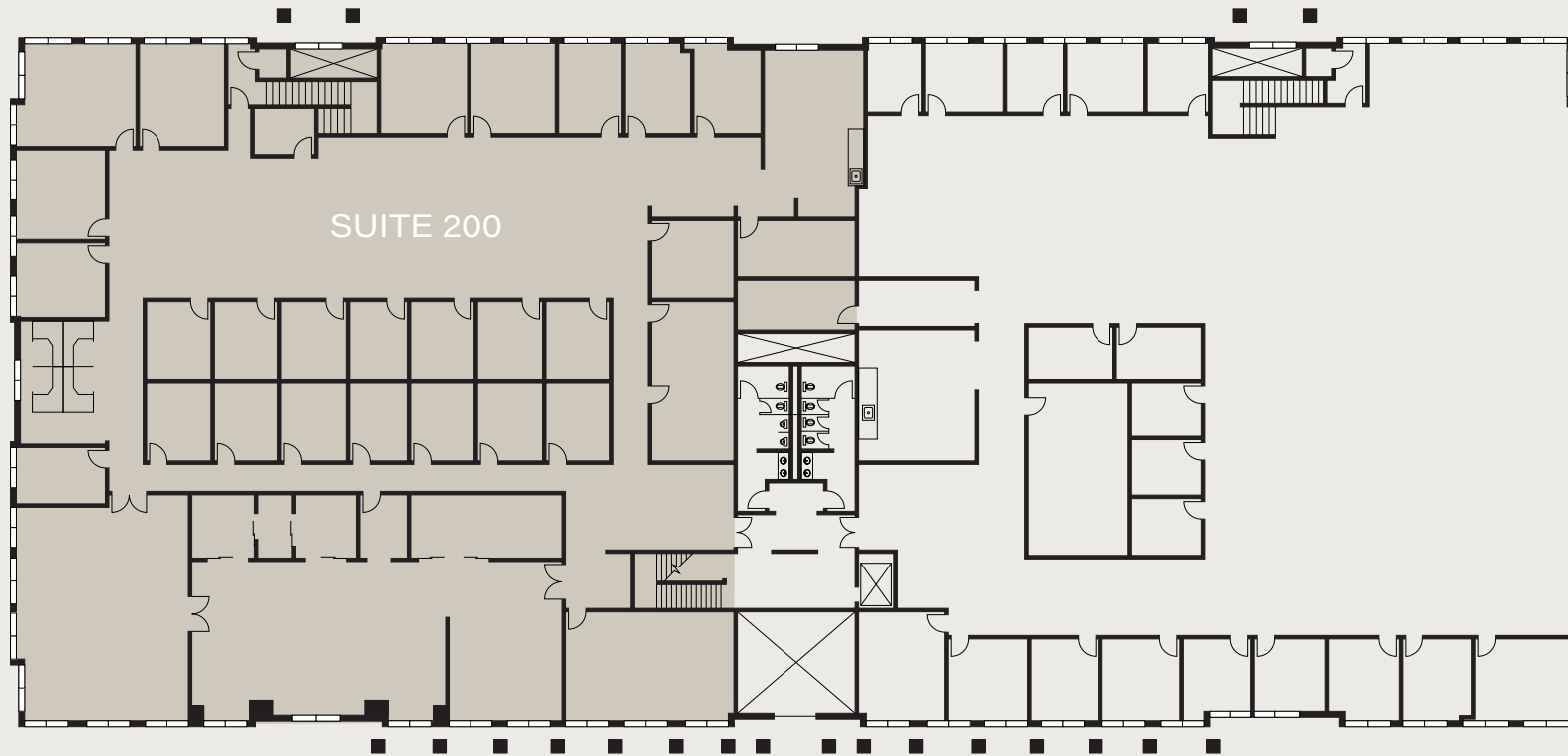
24 Workstations
24 Offices
1 Reception Desk
1 Mother's Room



Expiring
06/30/2031



Floor Plan



Double Door Entry
off 2nd Floor Lobby



Stunning
Reception Area



Living-Room Style
Collaboration Areas



20+
Interior Offices



Open Area for
Workstations



3
Conference Rooms



Beautiful
Open Kitchen Area



Design Studio



Interactive Game
Space + Tenant Lounge



Modern Breakroom/
Kitchen Area

Gallery



Property Features

Located in the Heart of Irvine Spectrum

ON-SITE AMENITIES INCLUDE:

- Weekly Food Trucks, Auto-Detailing & EV Charging
- Outdoor Event-Ready Gathering Spaces with Wi-Fi, BBQ and Shaded Seating
- Onsite Private Fitness Center and Walking Trail

Access to the 5, 405, 133 and 241 Toll Road

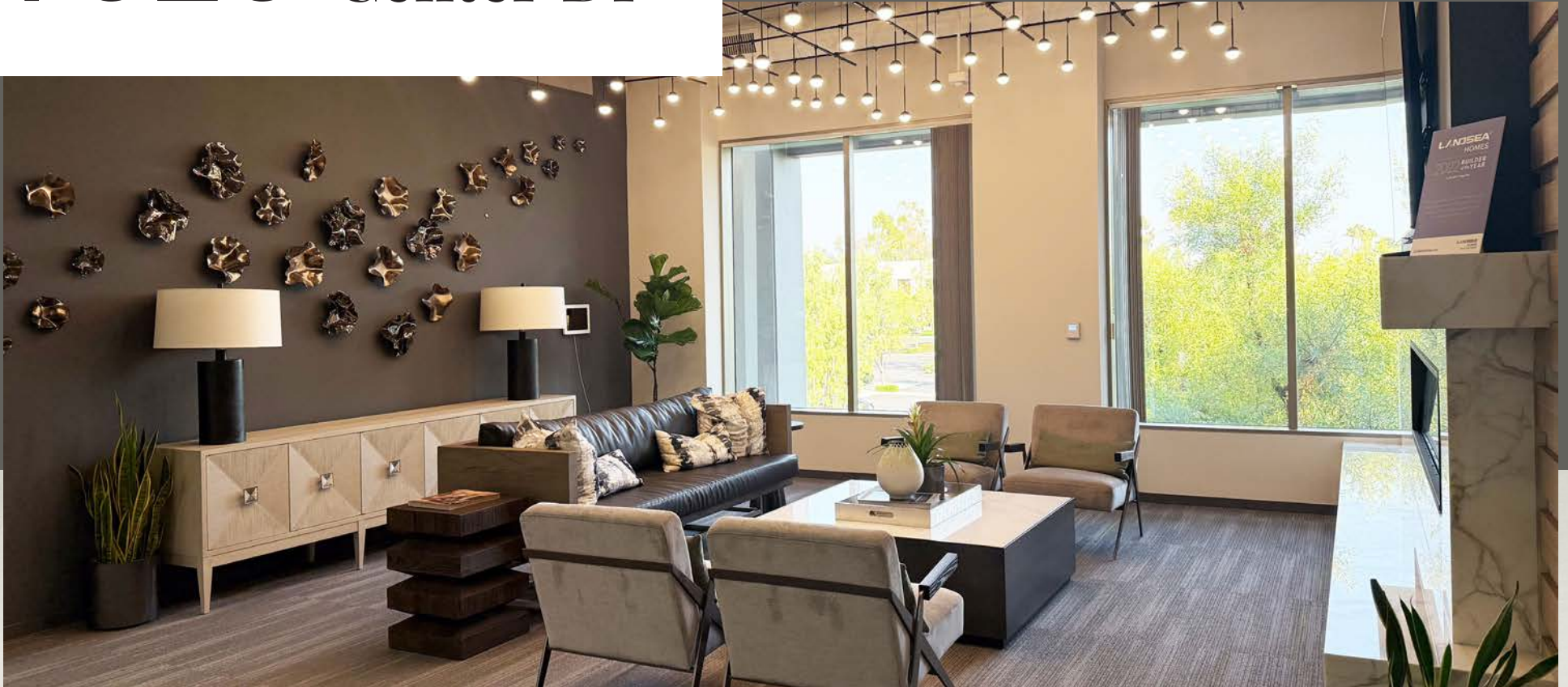
Nearby Dining and Retail options at Irvine Spectrum Center Sand Canyon Plaza and Woodbridge Village Center

Nearby Hotels such as the Marriot Irvine Spectrum



7525 Irvine Center Dr

SUITE 200 | IRVINE, CA



CONTACTS

ALLISON KELLY

Lic. 01417664

+1 949 725 8474

allison.kelly@cbre.com

EMILY ISHIBASHI

Lic. 02230829

+1 949 725 8506

emily.ishibashi@cbre.com



© 2025 CBRE, Inc. All rights reserved. This information has been obtained from reliable sources but has not been verified for accuracy or completeness. CBRE, Inc. makes no guarantee, representation, or warranty and accepts no responsibility or liability for the accuracy, completeness, or reliability of the information contained herein. You should conduct a careful, independent investigation of the property and verify all information. Any reliance on this information is solely at your own risk. CBRE and the CBRE logo are service marks of CBRE, Inc. All other marks displayed on this document are the property of their respective owners, and the use of such marks does not imply any affiliation with or endorsement of CBRE. Photos herein are the property of their respective owners. Use of these images without the express written consent of the owner is prohibited.