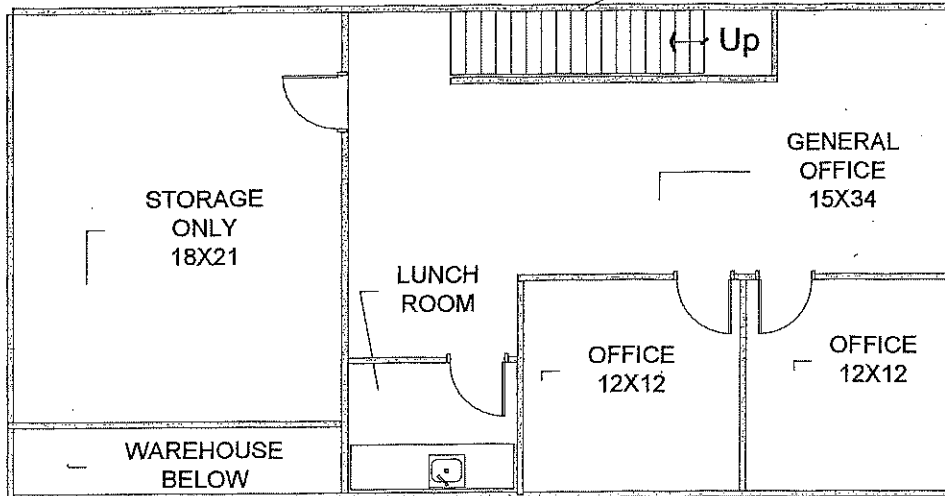


NORTHWEST BUSINESS PARK
9500 TOPANGA CANYON BLVD

4,622 SQ FT OFFICE
+ 378 SQ FT MEZZANINE STORAGE
TOTAL 5,000 SQ FT
(MODIFIED)

STAIRS FROM GROUND
FLOOR



SECOND FLOOR
MEZZANINE OFFICES

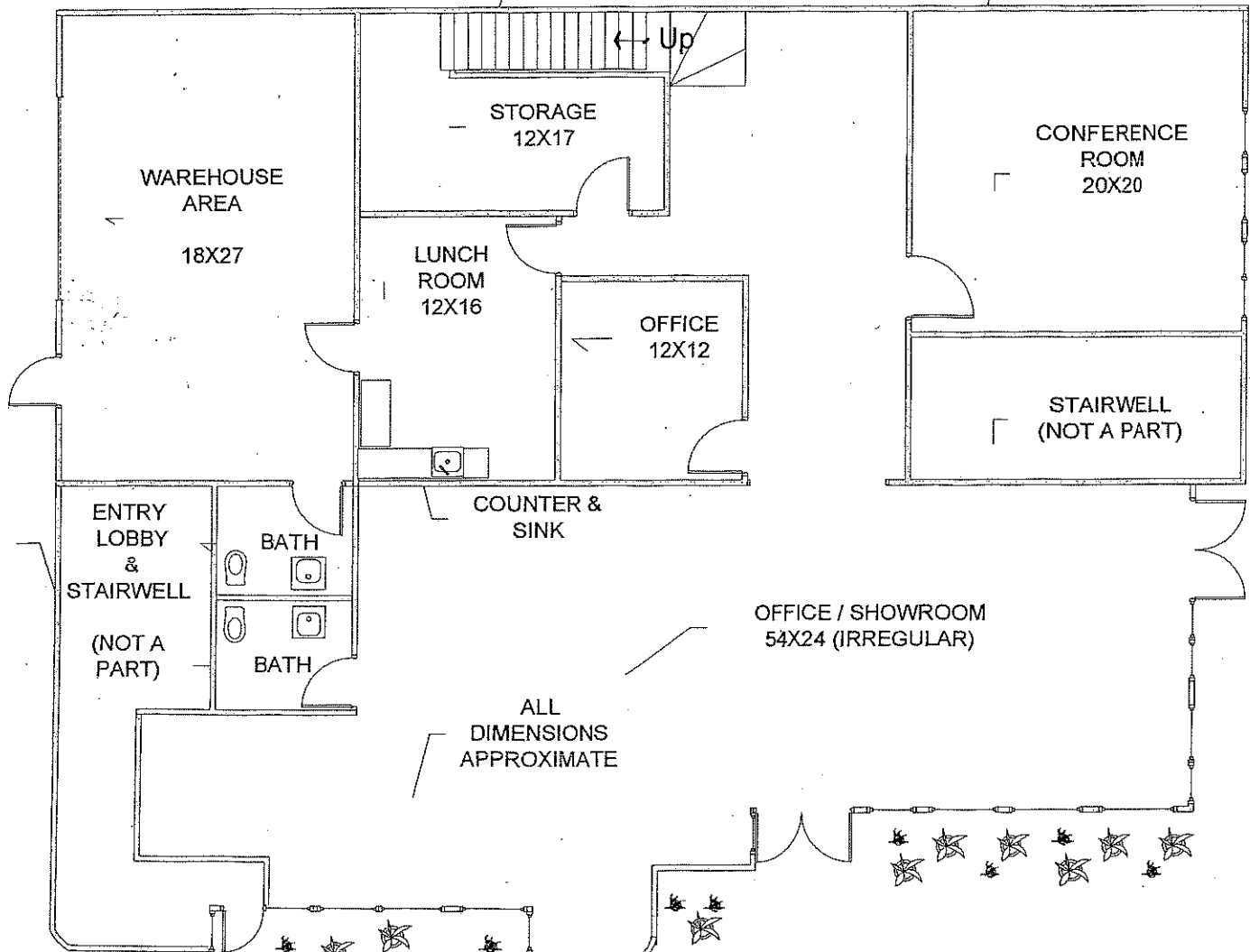
GROUND FLOOR

ELECTRIC SERVICE
200 AMP 110/208
3 PHASE

COUNTER
& SINK

STAIRS UP TO
SECOND FLOOR

73



60

ALL
DIMENSIONS
APPROXIMATE