

9245

SKY PARK COURT

SAN DIEGO, CA 92123

OFFICE/MEDICAL SPACE FOR LEASE - 1,474 SF

9245 SKY PARK COURT, SAN DIEGO, CA 92123



CASEY BROWN

858.395.2610

CBROWN@VOITCO.COM

LIC. #02132741

**Voit**

REAL ESTATE SERVICES



**SDSU**

Research  
Foundation

## PROPERTY HIGHLIGHTS

- » Easily Accessible & Centrally Located Office Space
- » Abundant Parking
- » Common Area Conference Room
- » Outdoor seating
- » Excellent access to I-15, I-8, I-805, Hwy 163, and Hwy 52
- » Close proximity to Public Transportation



**9245**  
SKY PARK COURT  
SAN DIEGO, CA 92123

## FLOOR PLANS

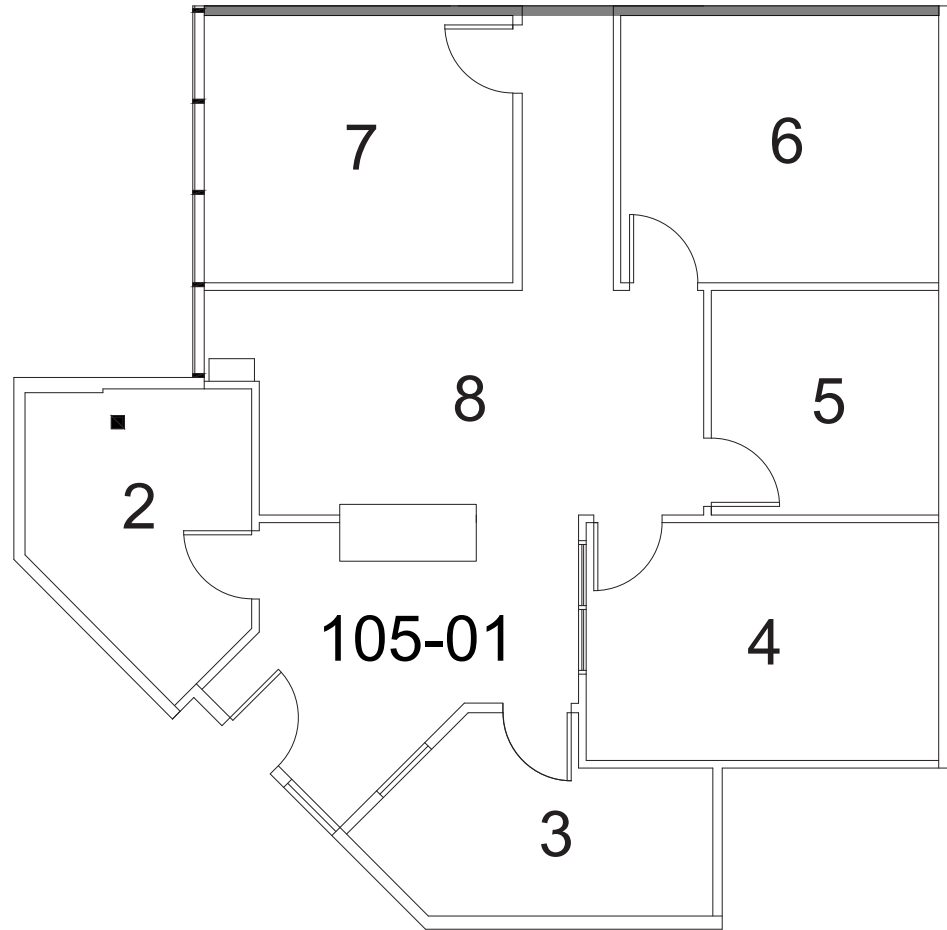
9245 SKY PARK  
COURT

### 9245 SKY PARK COURT

SUITE	SIZE	LEASE RATE
105	1,474 SF	\$2.35/SF + E MG

#### FEATURES

- » Five (5) Private Offices
- » One (1) IT / Storage Room
- » Open Office Area
- » Reception
- » Immediate Lobby Access



9245

SAN DIEGO STATE  
UNIVERSITY  
Research Foundation



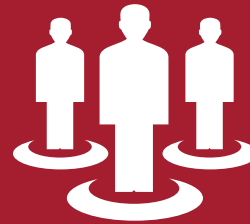
# Kearny Mesa

Kearny Mesa is a community where inventions and ideas take root, businesses grow, and San Diegans prosper. Kearny Mesa thrives as a diverse employment area with leading companies and quality jobs that connect the region to the global economy.

The central location and accessibility of Kearny Mesa attracts industry and commerce, and makes it a desirable location for investment. Kearny Mesa is evolving into an urban center where people work, live, shop, and eat while maintaining the area's deep ties to innovation.

Kearny Mesa supports the growth of industries, corporate campuses, offices, and retail. The distinctive restaurants and entrepreneurs along Convoy Street have expanded Kearny Mesa's reputation to include commerce, cuisine, and culture.

The future of Kearny Mesa is as a strong employment center with residential uses and abundant outdoor spaces where people can connect. This growth is taking place in an era of sustainable and healthy communities.



**111,585**  
POPULATION



**\$641,231**  
MEDIAN HOME VALUE



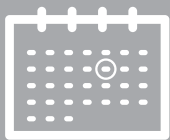
**\$111,216**  
AVERAGE HOUSEHOLD  
INCOME



**1977**  
MEDIAN YEAR BUILT



**44%**  
BACHELOR'S DEGREE  
OR HIGHER



**37.1**  
AVERAGE AGE



**44,972**  
HOUSEHOLDS



**14,834**  
DAYTIME BUSINESSES



**CASEY BROWN**

858.395.2610

CBROWN@VOITCO.COM

LIC. #02132741

***Voit***  
REAL ESTATE SERVICES

4180 La Jolla Village Drive, Suite 100, La Jolla, CA 92037 | 858.453.0505 | 858.408.3976 F | Lic #01991785 | [www.voidco.com](http://www.voidco.com)

Licensed as a Real Estate Salespersons by the DRE. The information contained herein has been obtained from sources we deem reliable. While we have no reason to doubt its accuracy, we do not guarantee it.  
©2025 Voit Real Estate Services, Inc. All Rights Reserved.