

**fisher
german**

11 Westferry Circus

Leasehold | Offices

Canary Wharf, E14 4HD

5,915 - 29,863 Sq.ft (549 - 2,774 Sq.m)



To let | £35.00 psf pa excl.



Key information



Rent
£35.00
(per sq ft pa excl.)



Service charge
£16.91
(per sq ft pa excl.)



Business Rates
Est. £13.50
(per sq ft pa)



EPC rating
B

11 Westferry Circus

5,915 - 29,863 Sq.ft (549 -2,774 Sq.m)

Description

Westferry House is a landmark 140,000 sq ft office building occupying a prominent corner position at the western gateway to Canary Wharf, one of Europe's most prestigious business districts. Designed by award-winning architects Scott Brownrigg, the building combines Grade A office space with modern design and a prime riverside location.

- The 4th floor has undergone a comprehensive Cat A refurbishment, including a new lift lobby
- The 1st floor units will be available fitted and furnished from April 2026.
- Secure underground parking is available to tenants
- The landlord is open to delivering tailored fit outs and furnishings to meet occupier needs, subject to commitment.

Amenities



Managed
Reception



Raised Floor
Access



Shower &
Bike Storage



75 Parking
spaces



Private
Terrace



Live Internet
Connectivity -
No Wayleave

Further information

Lease Terms

A new Lease is available direct from the Landlord

Rent

£35.00 per sq ft pa excl.

Business Rates

£13.50 per sq ft pa.

Service Charge

£16.91 per sq ft

Legal Costs

Each party to be responsible for their own legal costs incurred in this transaction.

EPC

The EPC rating is B.

VAT

The property is elected for VAT which is therefore payable on rent and service charge.

Viewings

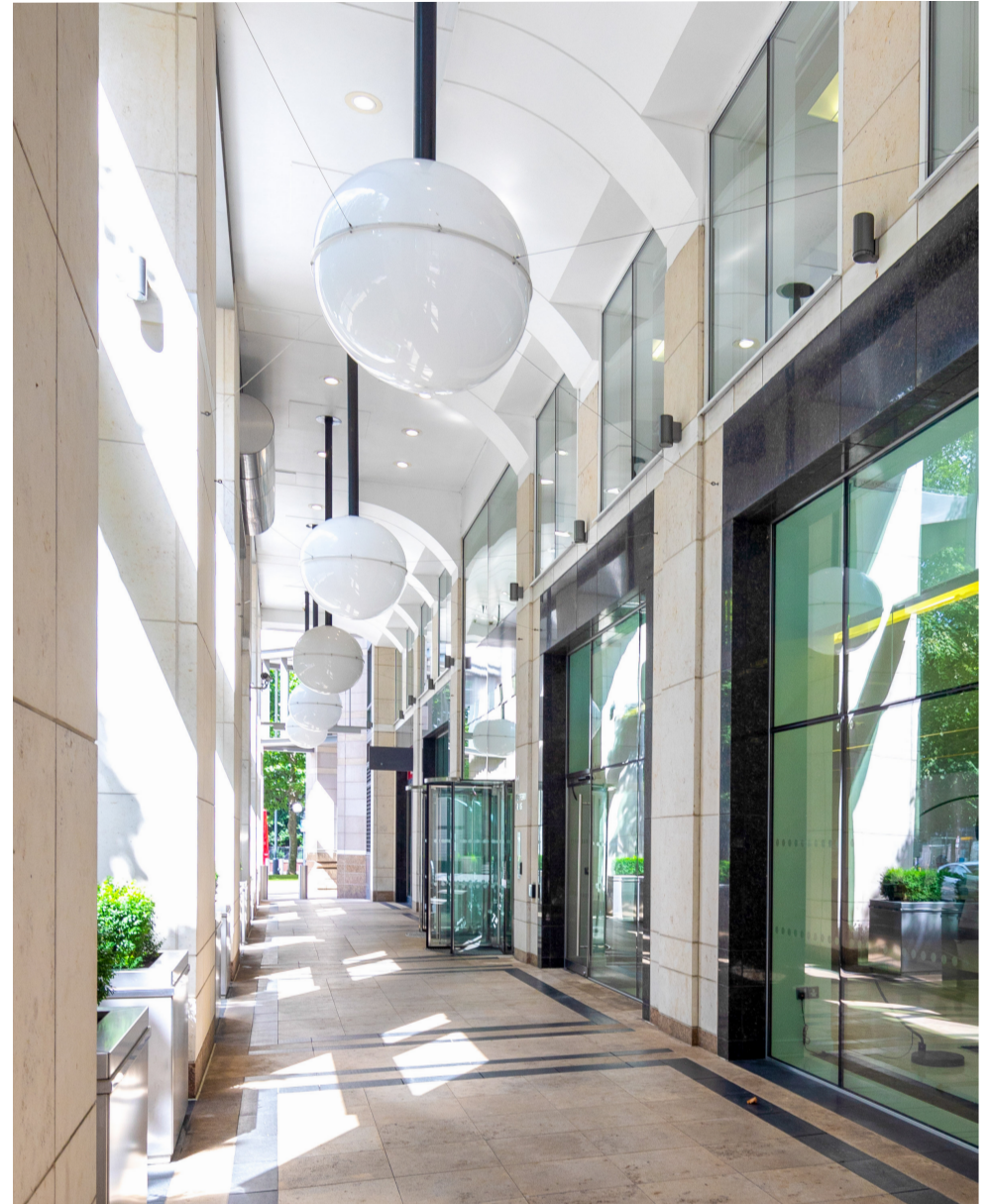
Strictly by prior arrangement with the joint agents Fisher German and BNP Paribas Real Estate.

Accommodation

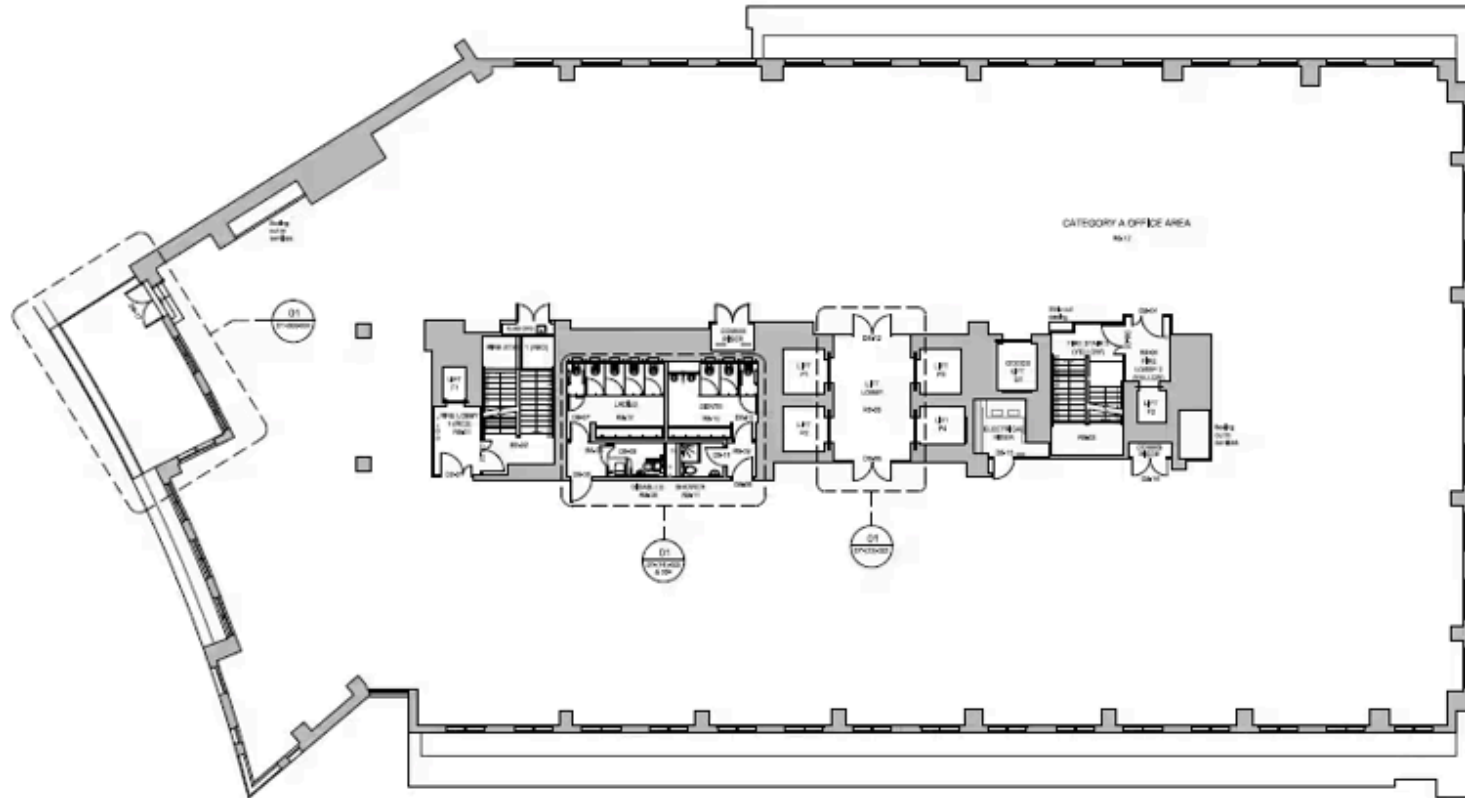
The approximate Net Internal Areas comprise:

Floor	Sq.ft	Sq.m
Fourth Floor	16,848	1,565
First Floor West (April 2026)	7,100	660
First Floor East (April 2026)	5,915	549
TOTAL	29,863	2,774

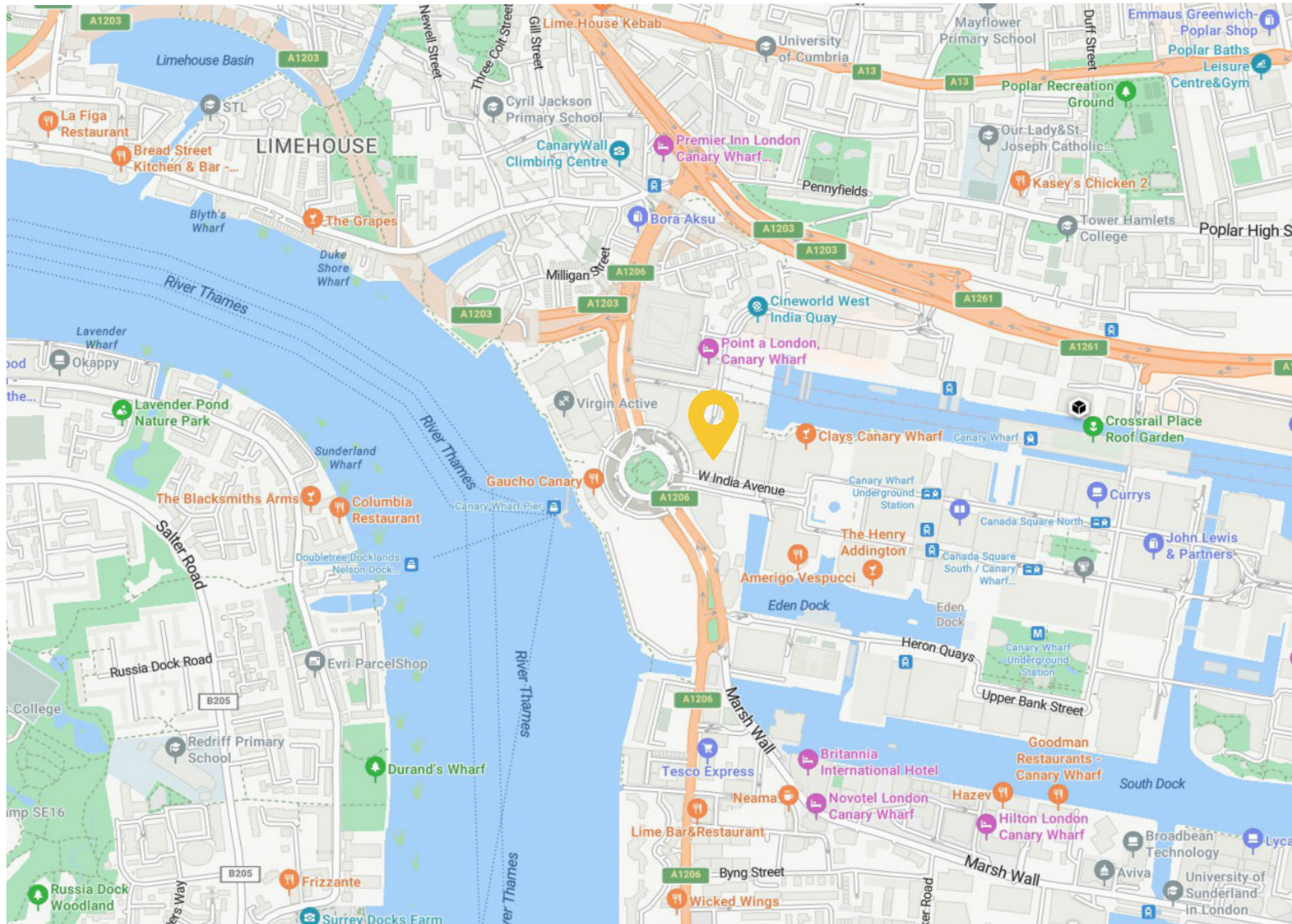




Standard Floor Layout



Location Map



Location

Address: 11 Westferry Circus,
London E14 4HD

What3words: ///trees.gown.double

Nearest Station

Westferry DLR:

6 min walk

Canary Wharf Jubilee Line &
Elizabeth Line:

6 min walk

Canary Wharf Pier:

9 min walk

Nearest Airport

London City Airport: 4 miles

Contact us



Ben Stanley

020 7747 3141

ben.stanley@fishergerman.co.uk



Doug Gordon

020 7747 3117

doug.gordon@fishergerman.co.uk



Or our joint agents: BNP Paribas Real Estate

Ben Rainbow

ben.rainbow@realestate.bnpparibas

Please note: Fisher German LLP and its Joint Agents give notice that: 1. They have no authority to make or give any representation or warranty on any property whether on their own behalf or on behalf of their clients or otherwise. 2. They do not owe any duty of care to you and assume no responsibility for any statements, representations, warranties or otherwise made in the particulars and you should not rely on those in the particulars. 3. The particulars are produced in good faith are set out as a general guide only and do not constitute or form an offer or a contract or part thereof. 4. Any photographs, descriptions, plans, measurements, distances and any other details in the particulars are approximate estimates only taken as the property appeared at the time and should not be relied upon as factually accurate. 5. Fisher German assumes prospective purchasers/tenants have carried out inspections to satisfy themselves that the information in the particulars is correct.

Particulars dated January 2026. Photographs dated 2025.



This brochure is fully recyclable