



VESTIAN

1909 ZEPHYR STREET
Stockton, CA 95206
SUBLEASE 508,800 SF

Steve Paramski
Senior Managing Director
T: 847.561.6248
E: paramski@vestian.com

Greg McClellan
Senior Associate
T: 331.575.8322
E: mcclellan@vestian.com

VESTIAN

1909 ZEPHYR STREET
STOCKTON, CA 95206

Size

508,800 RSF (DEMISABLE)

Price

NEGOTIABLE

Sublease Expiration

12/31/2027

Existing Office

5,073 RSF

Dock doors: 92

Gade Level Doors: 2

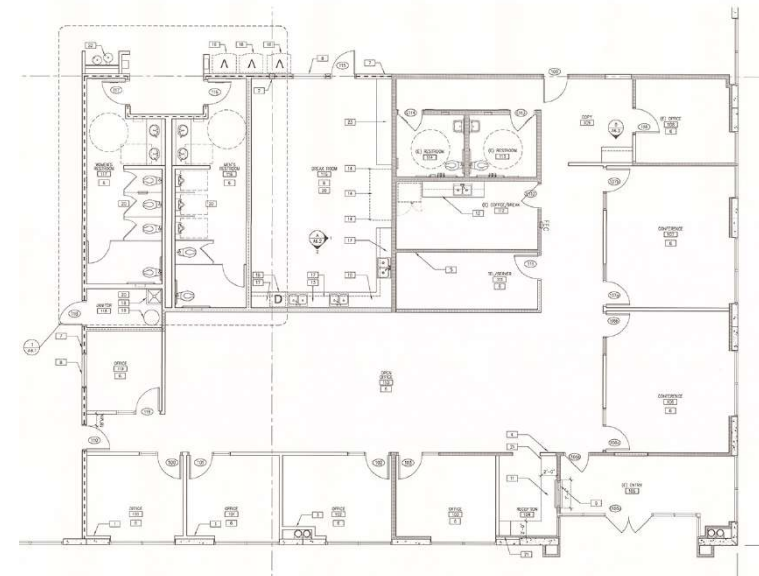
Trailer Parking: 135 (with dolly pads)

Power: 300 Amps, 277/480 volt, 3-Phase



OFFICE FLOOR PLAN

±5,073 SF



Steve Paramski Senior Managing Director T: 847.561.6248 E: paramski@vestian.com

Greg McClellan Senior Associate T: 331.575.8322 E: mcclellan@vestian.com

VESTIAN

1909 ZEPHYR STREET STOCKTON, CA 95206



Steve Paramski Senior Managing Director T: 847.561.6248 E: paramski@vestian.com
Greg McClellan Senior Associate T: 331.575.8322 E: mccllellan@vestian.com