

# PACIFIC PARK PLAZA

27101 - 27141 ALISO CREEK RD  
ALISO VIEJO, CA 92656

**OFFICE,  
RETAIL, &  
INDUSTRIAL  
UNITS**

*Pacific Park Plaza*

For More Information Contact:

Angela Draper

Leasing Manager

[ADraper@essexrealty.com](mailto:ADraper@essexrealty.com)

ph: 949.798.8100

[www.essexrealty.com](http://www.essexrealty.com)

License #01972882

**ESSEX** | REALTY  
MANAGEMENT, INC.

# PACIFIC PARK PLAZA

## AVAILABILITIES:

### Office:

27141- 210: 927sf (2 offices, reception) - \$2.45 FSG

27141- 215: 897sf (2 offices, reception) - \$2.45 FSG

27141-225: 2,893sf (Reception, break area, 6 offices) - \$2.45 FSG

27141-240: 649sf (2 offices, reception) - \$2.45 FSG

27141-265: 1,902sf (4 offices, open area, wetbar) - \$2.45 FSG

27141- 270: 2,409sf (6 offices, wetbar, conference room) - \$2.45 FSG

### Industrial:

27111-155: 1,716sf (warehouse, roll up door, 2 private offices) \$1.85 NNN -  
Available 7/1/26

27101-146: 1,906sf (warehouse, 2 roll up doors, restroom) \$1.85 NNN

### Retail:

27131-140: 2,534sf (large open space with private office, 2 restrooms, and storage area) \$2.45 NNN Available 4/1/26

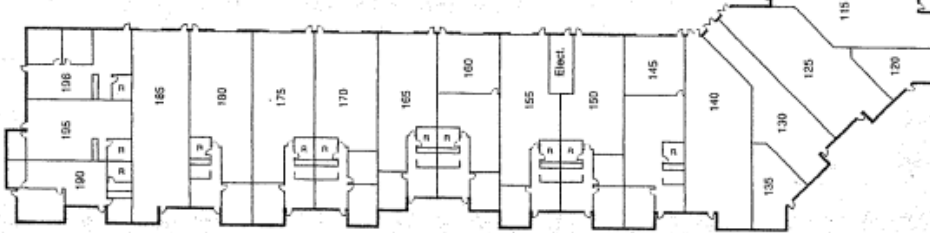
### Features:

- Beautiful park-like setting
- Easy access to 73 Toll Road
- Walking distance to shops, restaurants, and other amenities.
- Professionally managed
- Onsite management/leasing office
-

# PACIFIC PARK PLAZA



27101 Aliso Creek Road



27111 Aliso Creek Road



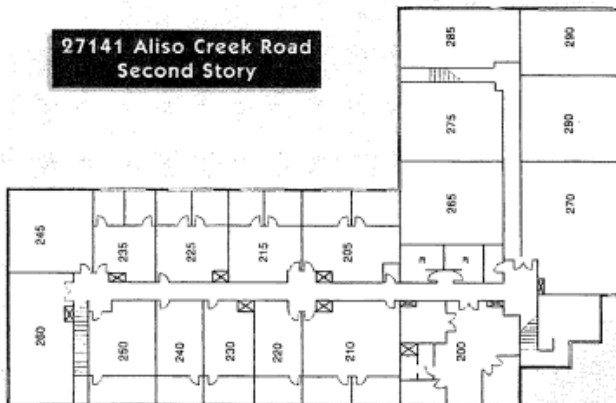
27121 Aliso Creek Road



27131 Aliso Creek Road



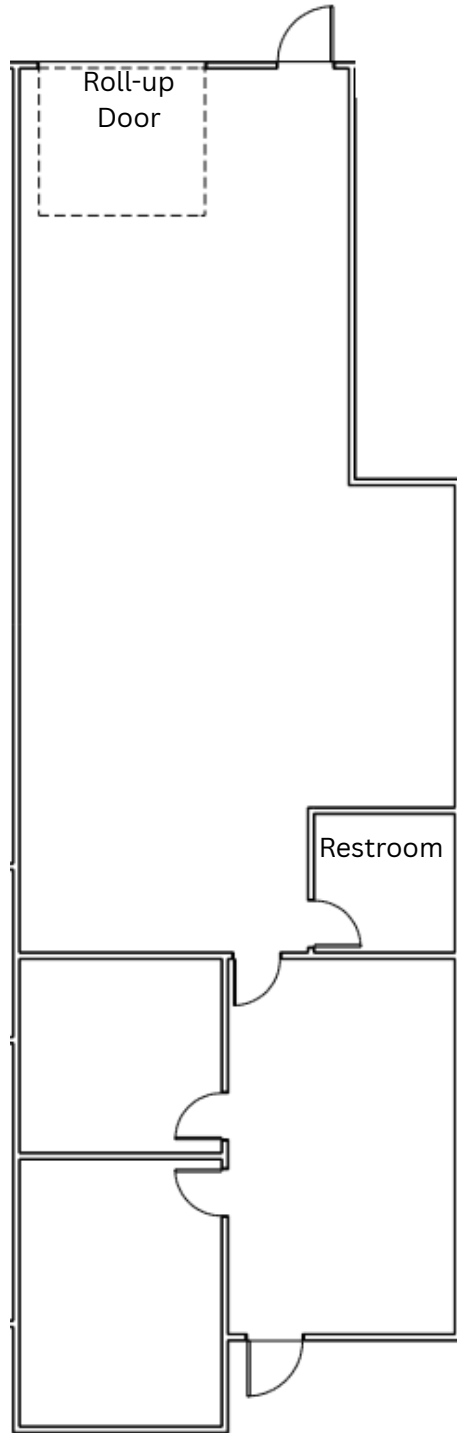
27141 Aliso Creek Road



27141 Aliso Creek Road  
Second Story

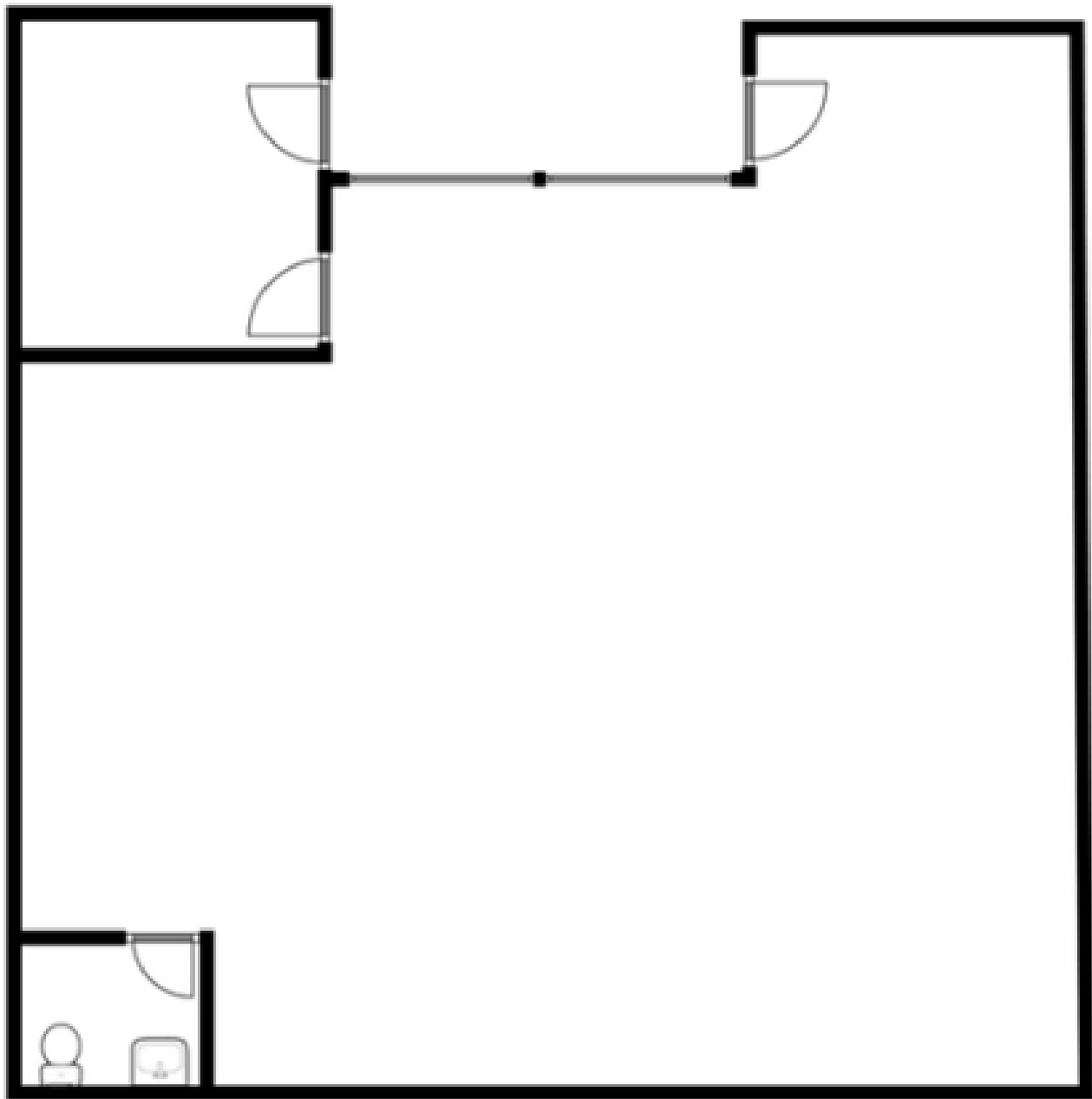
# PACIFIC PARK PLAZA

**27111-155**  
**1,716 Sq. Ft.**



# PACIFIC PARK PLAZA

27101-146  
1,906 Sq. Ft.



# PACIFIC PARK PLAZA

27131-140  
2,534 Sq. Ft.

