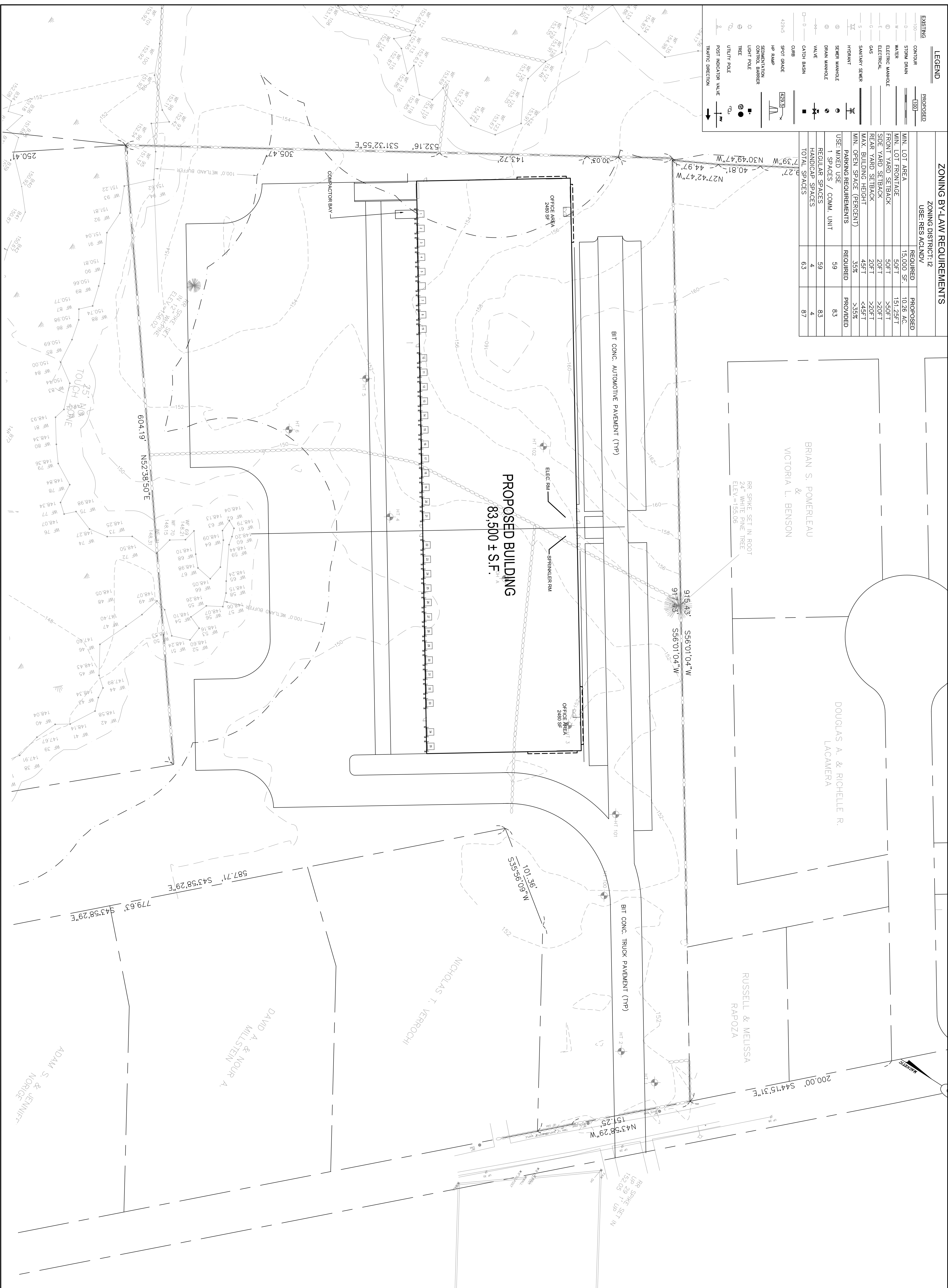


ZONING BY-LAW REQUIREMENTS			
ZONING DISTRICT: I2			
USE: RES AC/INDV			
EXISTING	PROPOSED	REQUIRED	PROPOSED
CONTOUR	100'	15,000 SF.	10,26 AC.
STORM DRAIN	0	50FT	151,25FT
WATER	0	50FT	>50FT
ELECTRIC MANHOLE	0	20FT	>20FT
ELECTRICAL	0	20FT	>20FT
GAS	0	45FT	<45FT
SANITARY SEWER	0	35%	>35%
HYDRANT	0	59	PROVIDED
SEWER MANHOLE	0	59	83
DRAIN MANHOLE	0	59	83
VALVE	0	4	4
CATCH BASIN	0	4	87
CURB	0	4	87
SPOT GRADE	429.5		
HP RAMP			
SEMENTATION CONTROL BARRIER			
LIGHT POLE			
TREE			
UTILITY POLE			
POST INDICATOR VALVE			
TRAFFIC DIRECTION			



NO. 1	DATE 10/29/2021	REVISIONS FIRMING SUBMISSION
<p>GILBERT STREET COMMERCIAL SCOTT GODDARD AM 3, PARCEL 13 GILBERT STREET MANSFIELD, MASSACHUSETTS</p>		
DATE: NOVEMBER 17, 2020	DRAWN: SMB/DRC	SCALE: 1" = 40'
<p>LEVEL CIVIL ENGINEERING / LAND SURVEYING 249 SOUTH STREET PLAINVILLE, MA 02762 TEL: (508) 865-2221 FAX: (508) 865-2219</p>		
<p>LAYOUT & MATERIALS C-2.0 SHEET 3 OF 8 1843.00</p>		