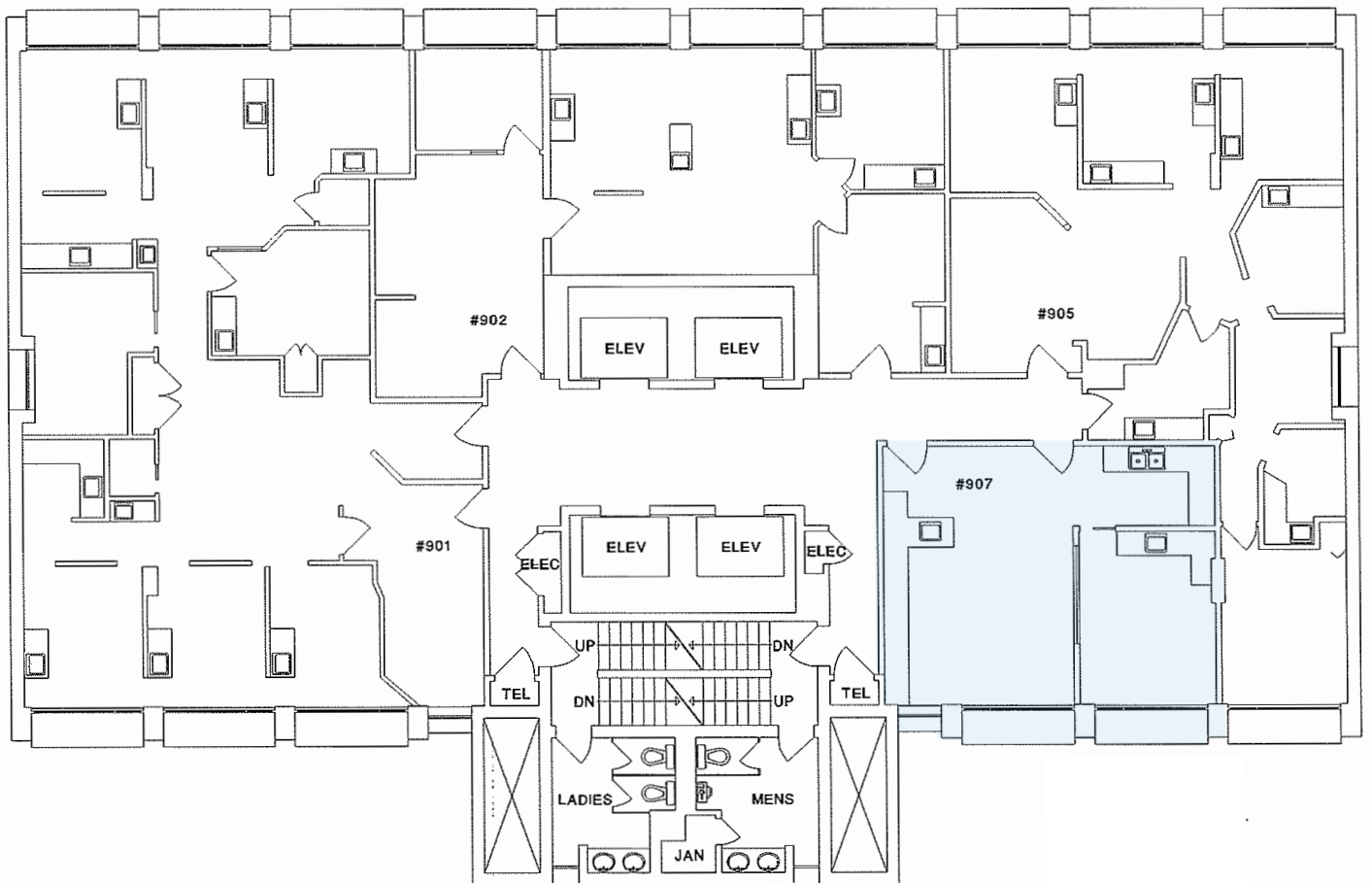


# | Unit 907

Rentable Area: 593 SF

Availability: October 1, 2025

Built-out space with a kitchenette, private office, and open area.



**LINDSAY KNOWLES**  
SENIOR LEASING MANAGER

778.875.2946

lknowles@warringtonpci.com

E. & O.E.: The information contained herein was obtained from sources which we deem reliable, and while thought to be correct, is not guaranteed by Warrington PCI Management.