

TABERNACLE

HOUSE

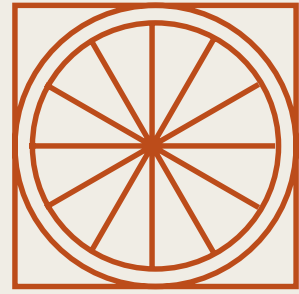
ROOTED IN SHOREDITCH. BUILT FOR WHAT'S NEXT.

29,271 SQ FT OF EXCEPTIONAL WORKSPACE WITH UNLIMITED POTENTIAL

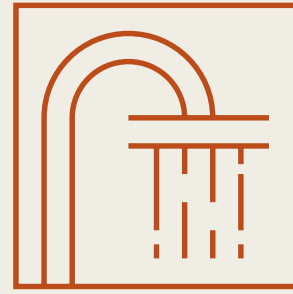
Located in the vibrant heart of Shoreditch, this brand new 29,271 sq ft development presents a unique opportunity to establish a full headquarters or lease individual floors. Thoughtfully designed to prioritise flexibility, creativity, and character, it offers a modern workspace tailored to the needs of today's most forward-thinking businesses, right in the centre of London's most dynamic district.



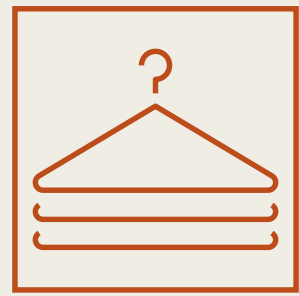
AMENITIES



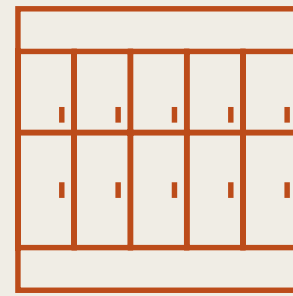
BIKE STORAGE



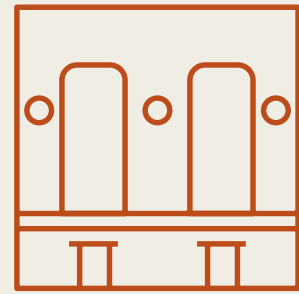
SHOWER ROOMS



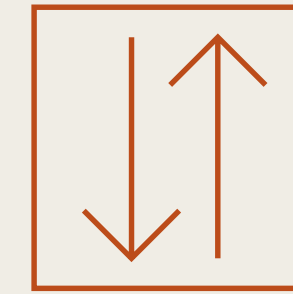
CHANGING ROOMS



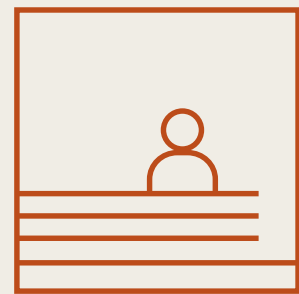
HEATED LOCKERS



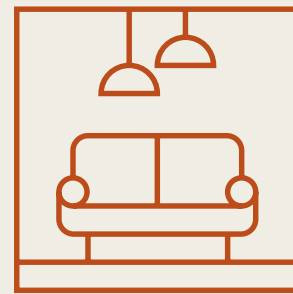
VANITY UNITS



LIFTS



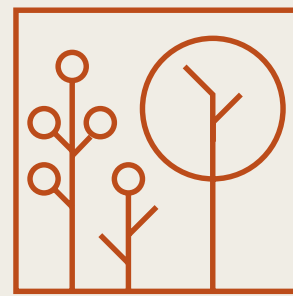
MANNED RECEPTION



LOUNGE AREA



REFRESHMENT AREA



PLANTING



AVAILABILITY

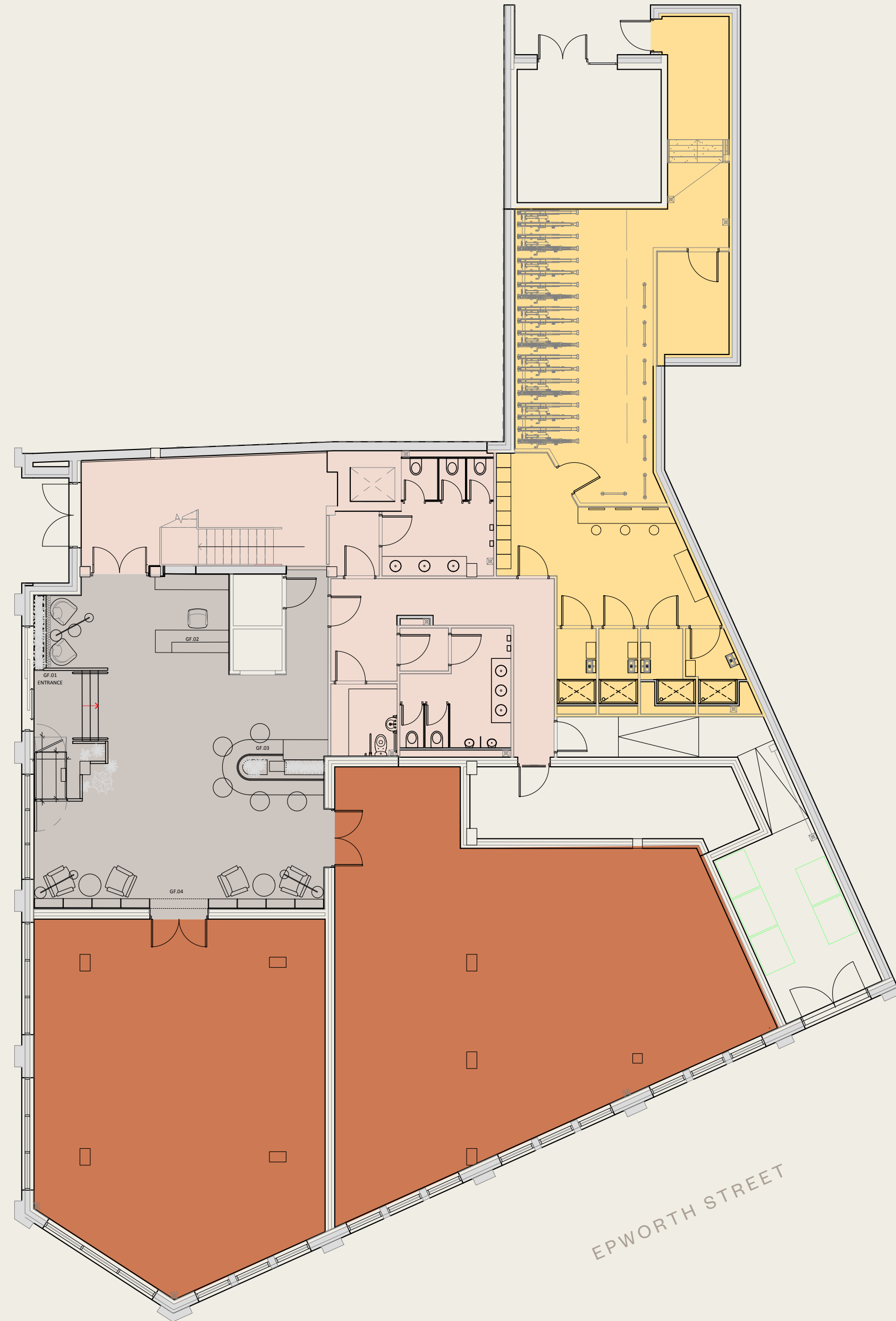
FLOOR	SQ FT	SQ M	FIT OUT
FIFTH	4,357	405	Unfitted
FOURTH	5,642	524	Unfitted
THIRD	5,638	524	Fitted
SECOND	5,638	524	Unfitted
FIRST	5,638	524	Unfitted
GROUND	2,357	219	Unfitted
TOTAL	29,271	2,720	

GROUND FLOOR
2,357 SQ FT

- OFFICE
- RECEPTION
- LOBBY & WC'S
- END OF TRIP



TABERNAACLE STREET



EPWORTH STREET



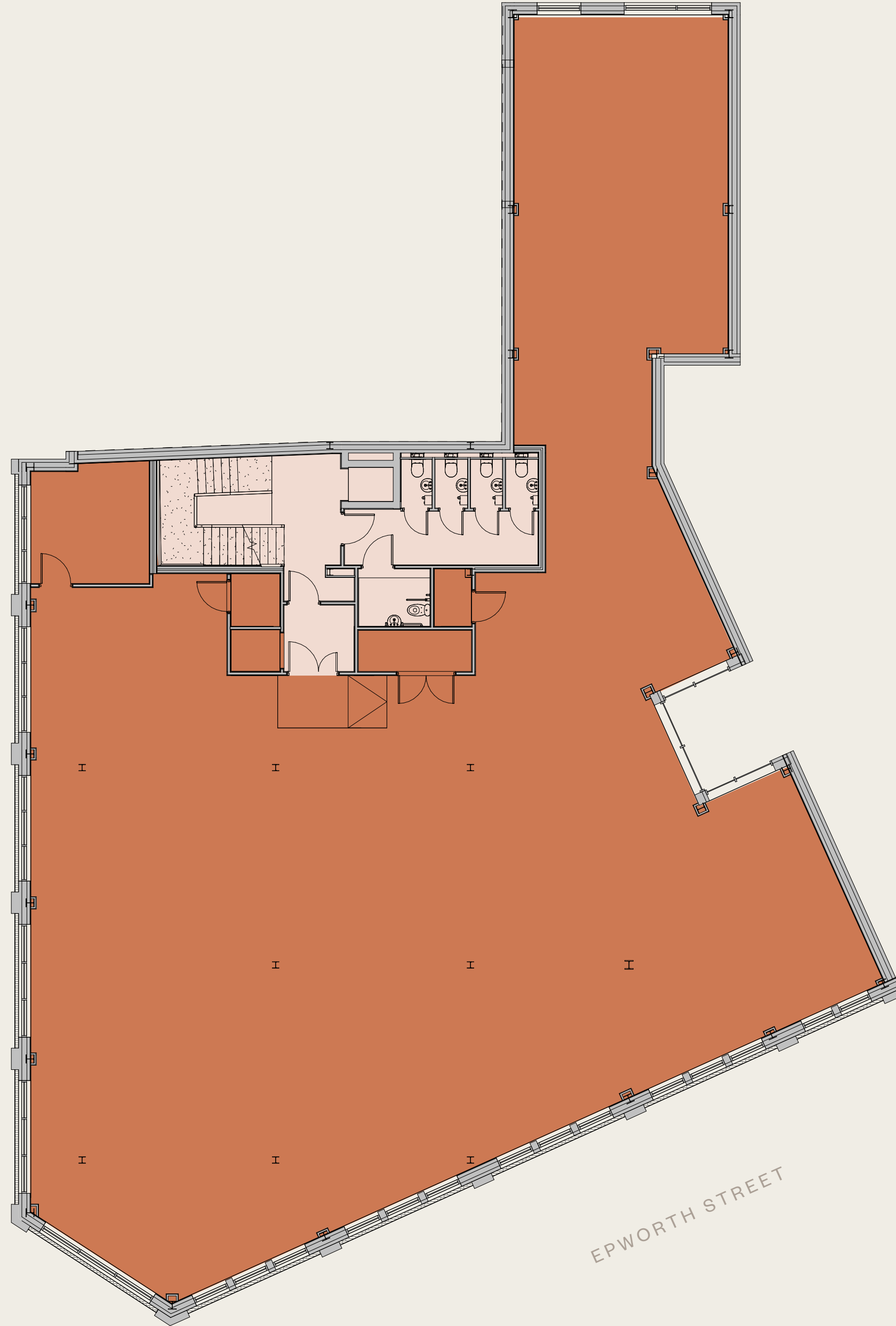
TYPICAL FLOOR
5,638 SQ FT

- OFFICE
- LOBBY & WC'S



TABERNAACLE STREET

EPWORTH STREET





THIRD FLOOR: FITTED

5,638 SQ FT



- OFFICE
- LOBBY & WC'S

- 50 DESKS
- 6 MEETING ROOMS
- 2 PHONE BOOTHS

TABERNAACLE STREET



EPWORTH STREET



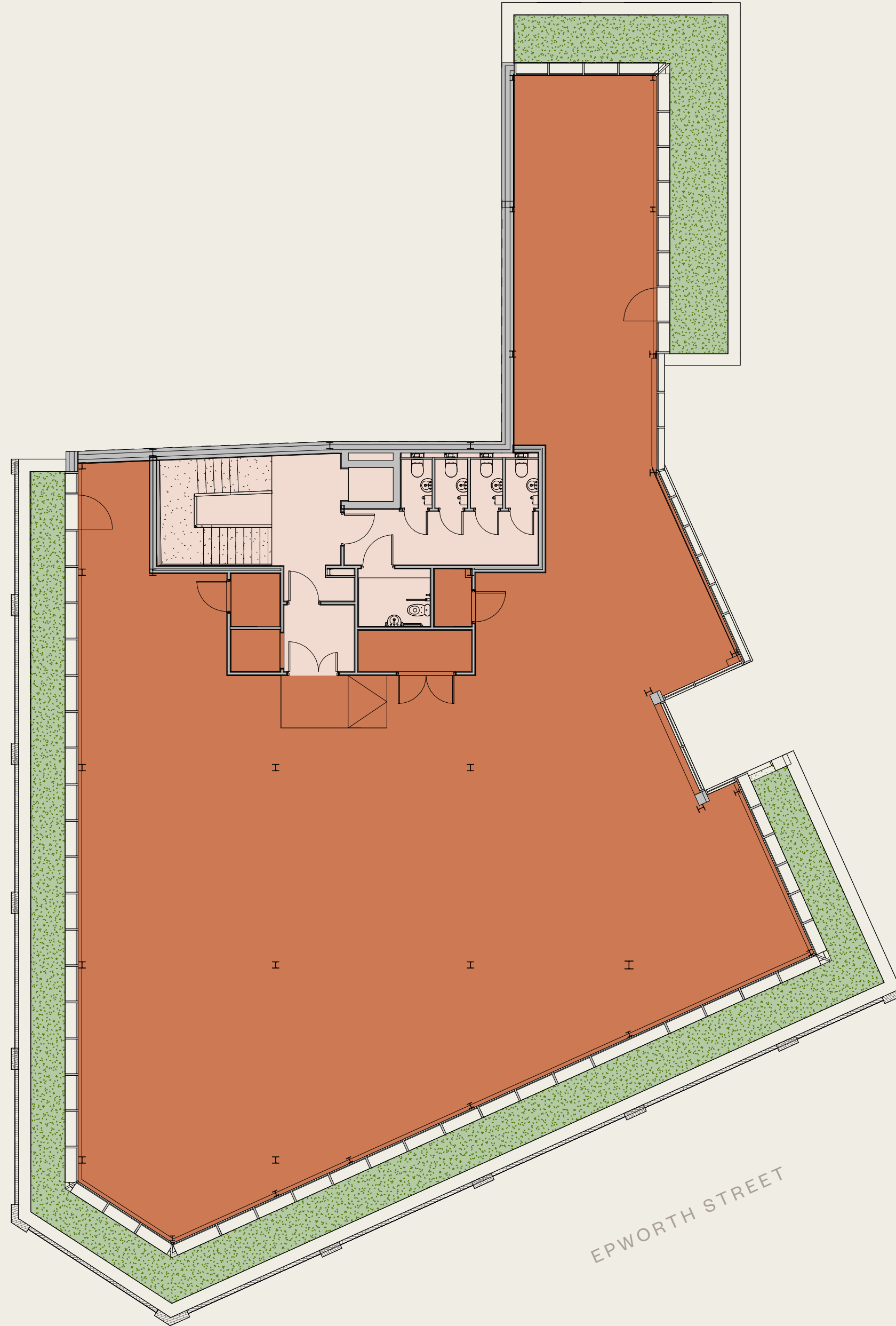
FIFTH FLOOR
4,357 SQ FT

- OFFICE
- LOBBY & WC'S
- TERRACE



TABERNAACLE STREET

EPWORTH STREET



SHOREDITCH



EXCHANGE SQUARE

Shoreditch is a buzz of bars, restaurants and art galleries. It has transformed from a commercial district into a thriving metropolis of young media, design and fashion companies.





GLORIA

WHITECROSS STREET MARKET



BREAD & BUTTER



BOXPARK

SHOREDITCH

OFFICE OCCUPIERS

- 1 ADOBE
- 2 AMAZON
- 3 MOTHER LONDON
- 4 FRONTIER
- 5 CANVA
- 6 AVIVA
- 7 TIKTOK
- 8 ALLFORD HALL MONAGHAN MORRIS
- 9 LHR10 AMAZON
- 10 BUCKLEY GRAY YEOMAN
- 11 FARFETCH
- 12 GOCARDLESS
- 13 MORNINGSTAR
- 14 WISE
- 15 WIEDEN + KENNEDY
- 16 CAPCO
- 17 VICE UK LTD
- 18 CAPITAL ONE
- 19 RUNPATH
- 20 FRONTIER
- 21 INMARSAT
- 22 KINGSLEY NAPLEY
- 23 EPSILON TELECOMMUNICATIONS
- 24 LENDABLE
- 25 VONAGE
- 26 MEDIAMONKS
- 27 EBIQUITY
- 28 WIZ CLOUD
- 29 WISE

WELLNESS

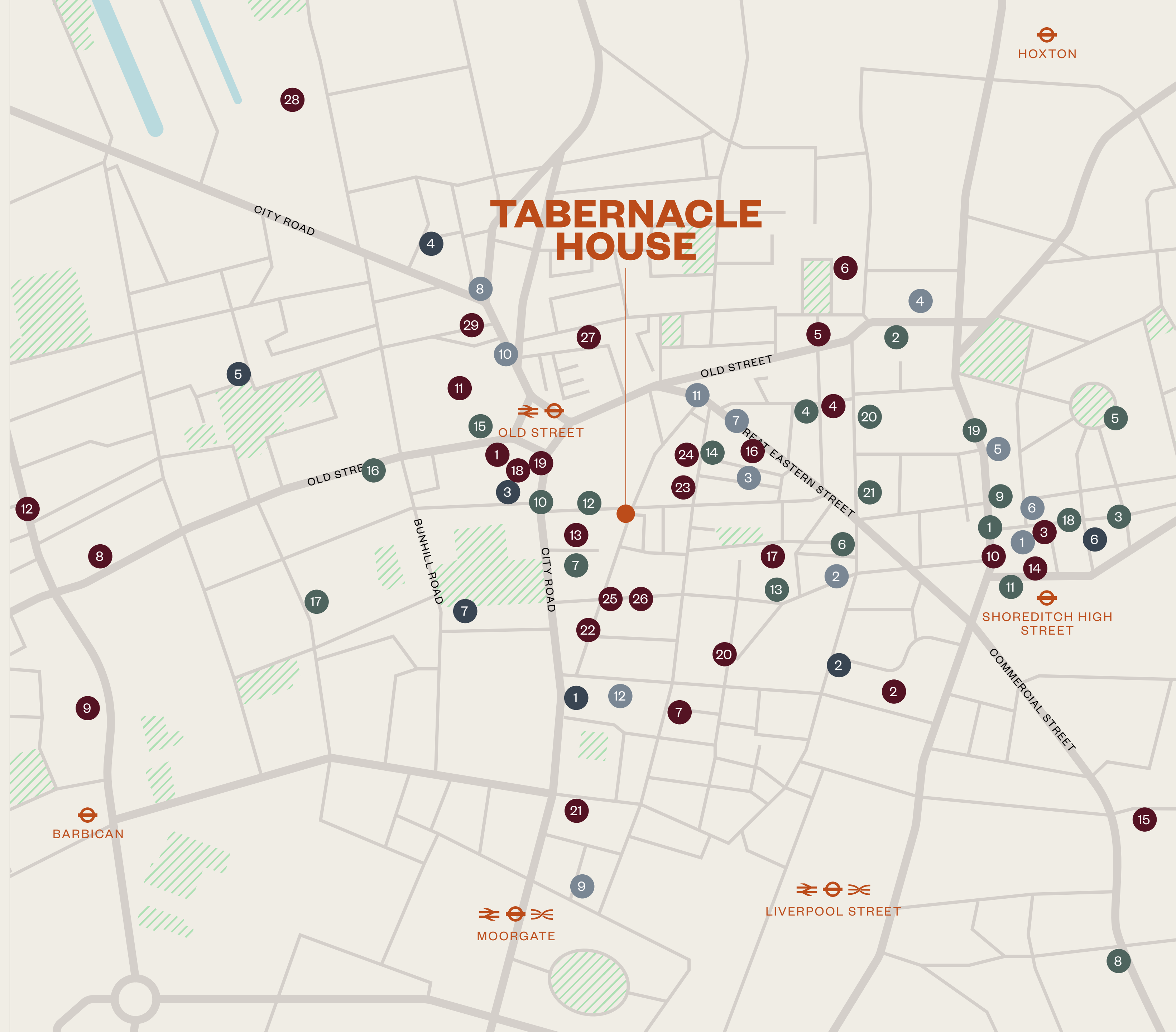
- 1 BARRY'S LONDON EAST
- 2 BLOK SHOREDITCH
- 3 HOUSE OF FITNESS LONDON
- 4 HOXTON PILATES
- 5 IRONMONGER ROW BATHS
- 6 PSYCLE SHOREDITCH
- 7 VIRGIN ACTIVE

BARS & RESTAURANTS

- 1 SMOKING GOAT SHOREDITCH
- 2 THE CLOVE CLUB
- 3 CECCONI'S SHOREDITCH
- 4 BLACKLOCK SHOREDITCH
- 5 ROCHELLE CANTEEN
- 6 MANTECA
- 7 LANTANA SHOREDITCH
- 8 BUBALA
- 9 DISHOOM SHOREDITCH
- 10 LILIENBLUM
- 11 LYLE'S
- 12 OZONE COFFEESHOREDITCH
- 13 PADELLA
- 14 THE PRINCESS OF SHOREDITCH
- 15 SERATA HALL
- 16 TAYÉR + ELEMENTARY
- 17 WHITECROSS MARKET
- 18 OWL & PUSSYCAT
- 19 SEED LIBRARY
- 20 STRONGROOM BAR
- 21 GLORIA

HOTELS

- 1 SHOREDITCH HOUSE
- 2 VIRGIN HOTELS SHOREDITCH
- 3 NOBU HOTEL LONDON SHOREDITCH
- 4 SHOREDITCH TOWN HALL
- 5 ONE HUNDRED SHOREDITCH
- 6 BOUNDARY SHOREDITCH
- 7 THE HOXTON, SHOREDITCH
- 8 MONTCALM EAST, AUTOGRAPH COLLECTION
- 9 SOUTH PLACE HOTEL
- 10 THE Z HOTEL SHOREDITCH
- 11 ART'OTEL
- 12 MONTCALM ROYAL LONDON HOUSE



JOIN LONDON'S MOST CREATIVE BUSINESS COMMUNITY

TECH & DIGITAL TRAILBLAZERS

AMAZON

A major presence at Principal Place, right on the edge of Shoreditch



MONZO

The digital bank making banking beautifully simple



WISE

The fintech powerhouse born and bred in East London



GOOGLE CAMPUS

A hub for innovation, collaboration, and early-stage growth



CREATIVE AGENCIES & MEDIA ICONS

WIEDEN + KENNEDY

Wieden + Kennedy is an independent, global creative company



VICE MEDIA

The voice of alternative media, with roots deep in Shoreditch



R/GA

Global digital innovators working at the intersection of design and tech



FRAMESTORE

Award-winning visual effects experts behind some of Hollywood's biggest films





SEAMLESS CONNECTIVITY AT THE HEART OF SHOREDITCH

Situated just 250 metres southeast of Old Street Roundabout, Tabernacle Street offers unparalleled access to London's extensive transport network.

UNDERGROUND & RAIL ACCESS



Less than a 5-minute walk, providing swift connections to the City, King's Cross, and beyond. (Northern Line)



Approximately 7 minutes on foot, offering access to the Circle, Hammersmith & City, Metropolitan, and Northern lines.



Also around a 7-minute walk, connecting you to the Central, Circle, Hammersmith & City, and Metropolitan lines, as well as national rail services.

BUS ROUTES

A multitude of bus routes serve the area, including the 135, 205, 214, 35, 55, and 76, ensuring convenient travel across London.

CYCLING INFRASTRUCTURE

For cyclists, the area boasts excellent infrastructure, with nearby Santander Cycles docking stations and access to Cycle Superhighway 1, facilitating easy commutes to various parts of the city.

PROXIMITY TO KEY HUBS

Tabernacle Street's prime location places it within easy reach of major business districts and cultural hotspots, making it an ideal choice for modern enterprises seeking connectivity and vibrancy.



SHAUN SIMONS
07788 423131
ss@compton.london

JOSHUA MILLER
07917 725365
jm@compton.london

allsop

JAMES NEVILLE
07789 658540
james.neville@allsop.co.uk

HARRI GUY
0791 7918124
harri.guy@allsop.co.uk

TABERNACLE

HOUSE

Compton gives notice that these particulars are set out as a general outline only for the guidance of intending Purchasers or Lessees and do not constitute any part of an offer or contract. Details are given without any responsibility and any intending Purchasers, Lessees or Third Party should not rely on them as statements or representations of fact, but must satisfy themselves by inspection or otherwise as to the correctness of each of them. No person employed or engaged by Compton has any authority to make any representation or warranty whatsoever in relation to this property. Compton is the licensed trading name of Compton RE Disposals Limited. Company registered in England & Wales no. Registered office: 47 St John's Square, Clerkenwell, London, EC1V 4JJ. Generated on 28.7.2025

DESIGNED BY
Compton Studio