

**For Sale or Lease  
Ready to Occupy Suites!**

**Colliers**

For Sale or Lease | +/- 1,534 - 3,127 SF  
**Two-Office Condo Units  
Meridian Professional  
Center**

4801 Calloway Drive | Bakersfield, CA

**Cameron Mahoney**

Senior Vice President | Principal  
License No. 01937802  
+1 661 631 3814  
cameron.mahoney@colliers.com

**David Williams, SIOR**

Senior Vice President | Principal  
License No. 00855489  
+1 661 631 3816  
david.a.williams@colliers.com

**Colliers International**

10000 Stockdale Hwy, Suite 102  
Bakersfield, CA 93311  
+1 661 631 3800  
www.colliers.com/bakersfield



## Available

The offering includes 4 separate condo units that can be combined or purchased in any configuration.

		<u>Sale Price</u>	<u>Lease Rate</u>	<u>Status</u>
<del>Suite 101:</del>	<del>+/- 2,403 sf</del>	<del>\$905,000 (\$375/psf)</del>	<del>\$2.25/sf</del>	Sold
Suite 102:	+/- 1,593 sf	\$599,000 (\$375/psf)	\$1.95/sf	Ready to Occupy
Suite 103:	+/- 1,534 sf	\$575,000 (\$375/psf)	\$1.95/sf	Ready to Occupy
<del>Suite 104:</del>	<del>+/- 1,638 sf</del>	<del>\$614,250 (\$375/psf)</del>	<del>\$2.73/sf</del>	Leased

*\*Units 102 & 103 may be combined for a total of 3,127 SF*

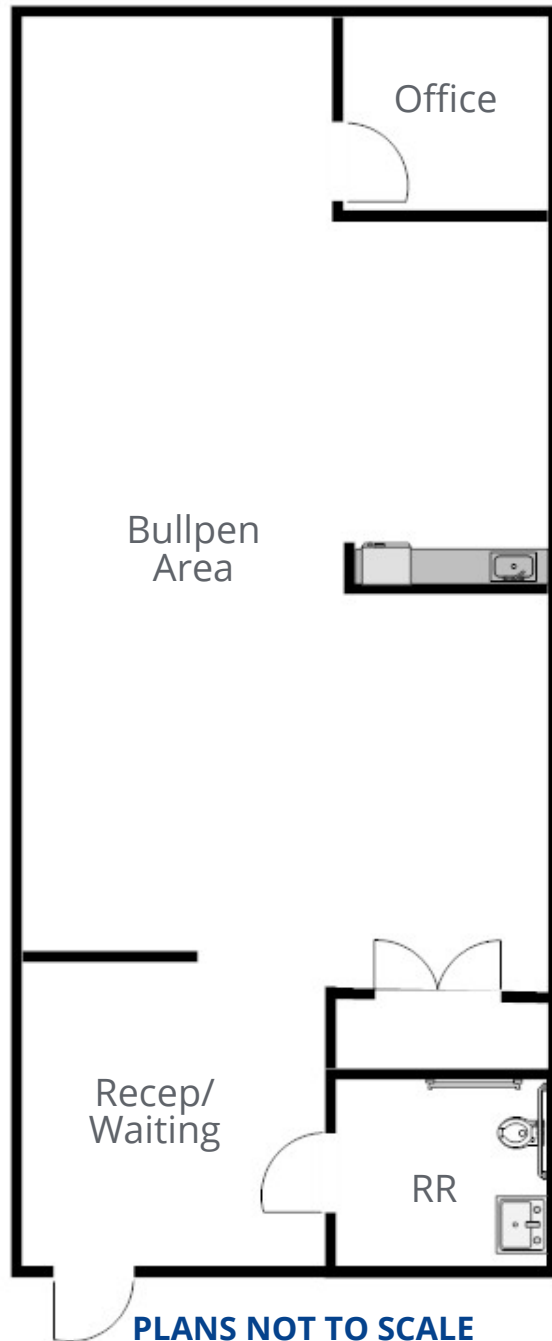
*\*Association fees, HVAC, and Insurance is approx. \$0.48/sf/mo*

## Property Information

**4801 Calloway Drive, Suites 101, 102, 103, and 104** are professional office condominium units located within the Meridian Medical Professional Center, a master-planned condominium project in a prime Northwest Bakersfield location at the southwest corner of Calloway Drive and Noriega Road. Zoned Commercial Office, this offering presents a rare opportunity to purchase or lease individual units or combine multiple suites to accommodate specific size requirements. Buyers may also acquire additional units for future occupancy while generating income from existing or new leases.

- Suite 102: Open and flexible layout featuring one (1) private office, a reception area, bullpen space, restroom, and coffee bar with sink.
- Suite 103: Well-designed floor plan with three (3) private offices, a reception area, conference room, and restroom.
- An ideal location that keeps you clear of downtown traffic, while providing quick and easy access to major freeways for a fast and efficient commute that's perfect for both employees and clients.
- Perfect your swing at the nearby Links at Riverlakes Golf Course, great for a quick round during lunch or after a productive day!
- Abundant on-site parking with exterior entrance to suite.
- Building signage available.
- Utilities are separately metered.
- Suites 102 & 103 may be combined for a total of 3,127 SF

# Floor Plan - Suite 102

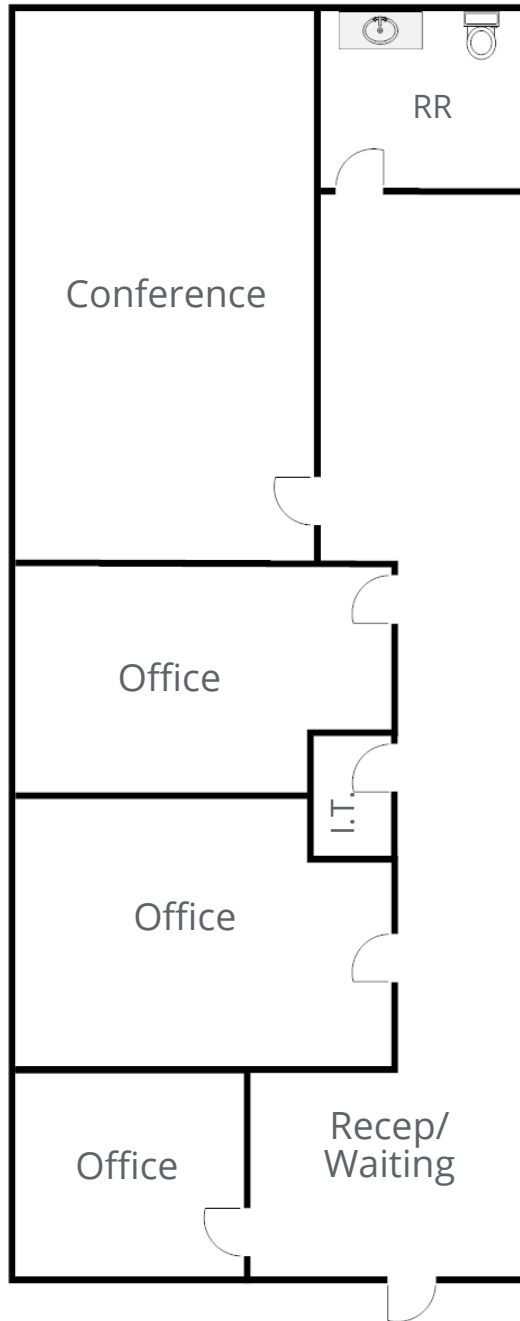


**Suite 102: +/- 1,593 SF**



# Floor Plan - Suite 103

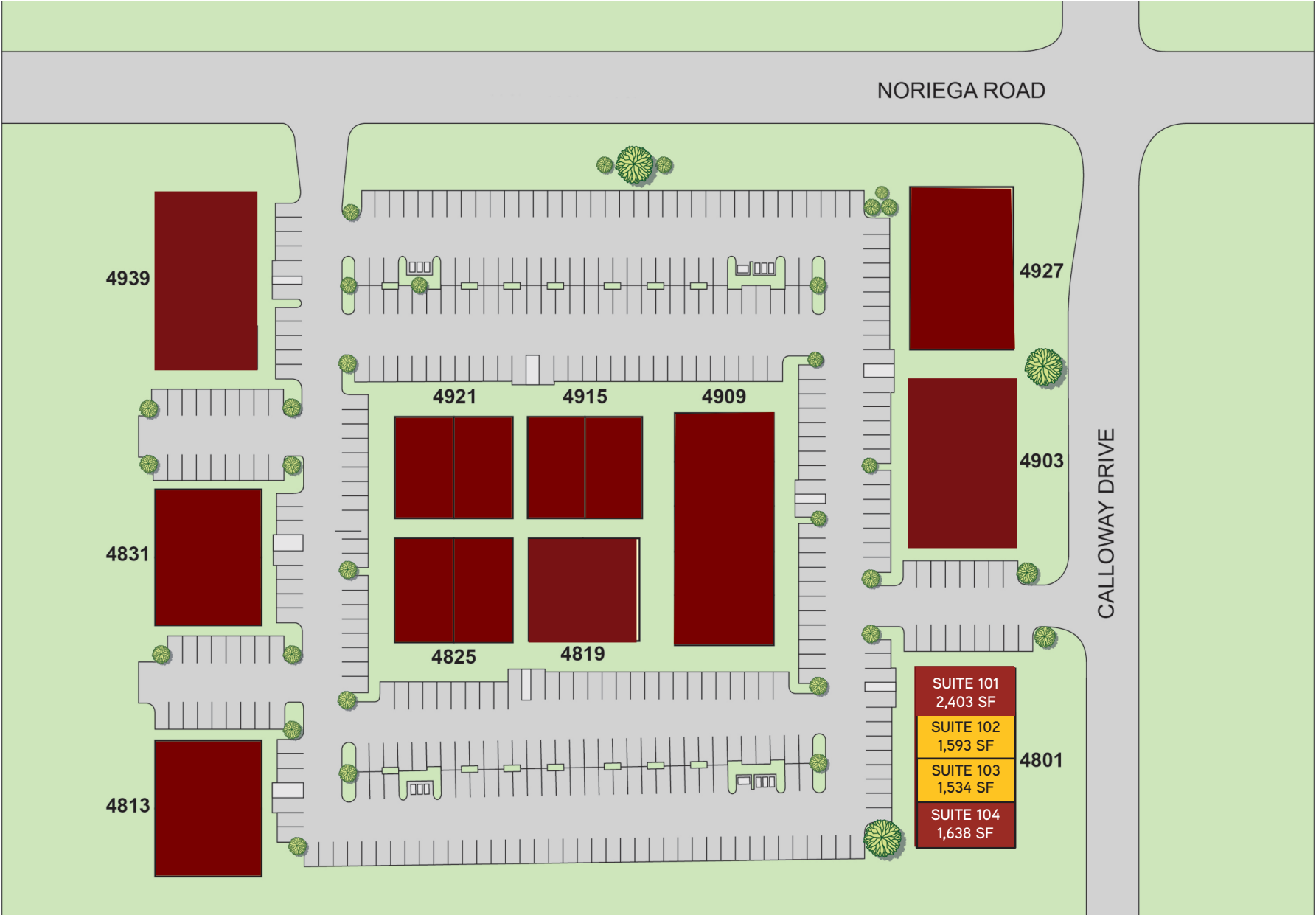
**Suite 103: +/- 1,543 SF**



**PLANS NOT TO SCALE**

This document has been prepared by Colliers International for advertising and general information only. Colliers International makes no guarantees, representations or warranties of any kind, expressed or implied, regarding the information including, but not limited to, warranties of content, accuracy and reliability. Any interested party should undertake their own inquiries as to the accuracy of the information. Colliers International excludes unequivocally all inferred or implied terms, conditions and warranties arising out of this document and excludes all liability for loss and damages arising there from. This publication is the copyrighted property of Colliers International and/or its licensor(s). ©2026. All rights reserved.

# Site Plan



PLANS NOT TO SCALE