

1725

De La Cruz Blvd, Santa Clara, CA

INDUSTRIAL KITCHEN | OFFICE/SHOWROOM



UNIT 6 (8,400 RSF)

CBRE

PROJECT HIGHLIGHTS



Monument Signage



Easy Access to 101, 87, and 880



High Parking Ratio



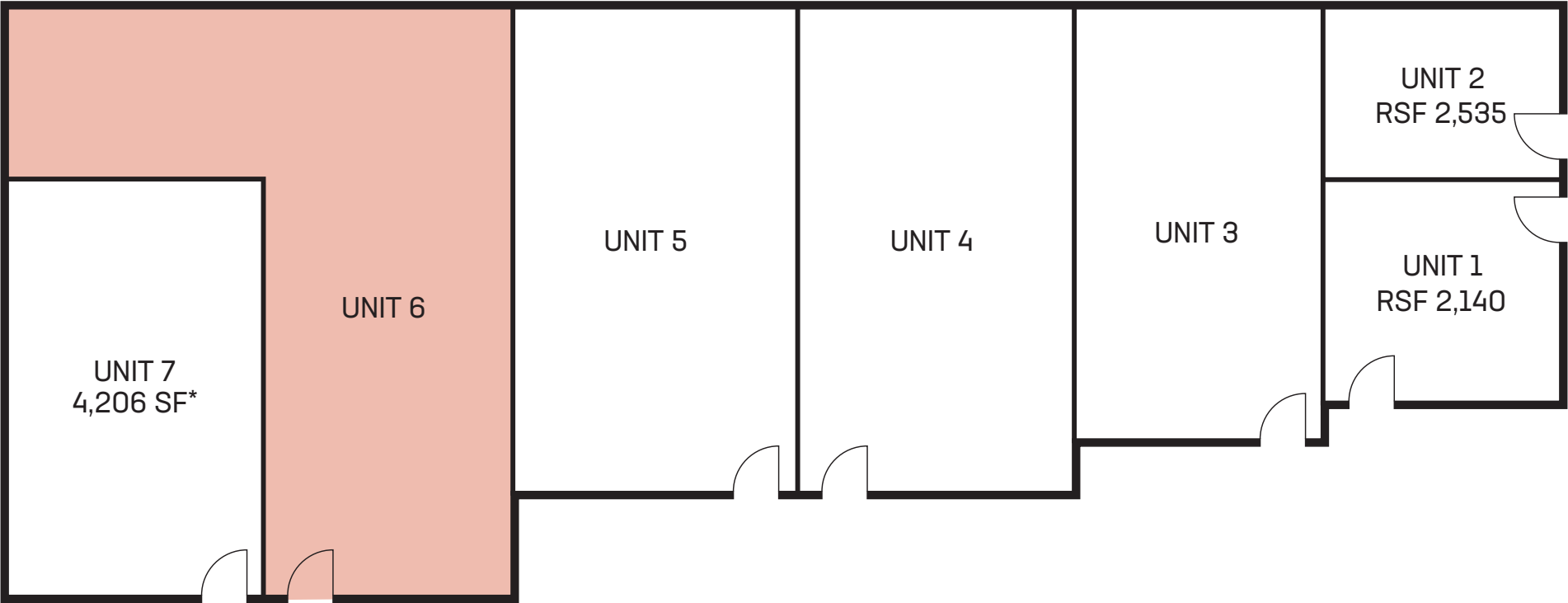
High Image Industrial Park



Near PayPal Stadium and Amenities



SITE PLAN



UNIT 6

Office/Lab/Warehouse

8,400 RSF

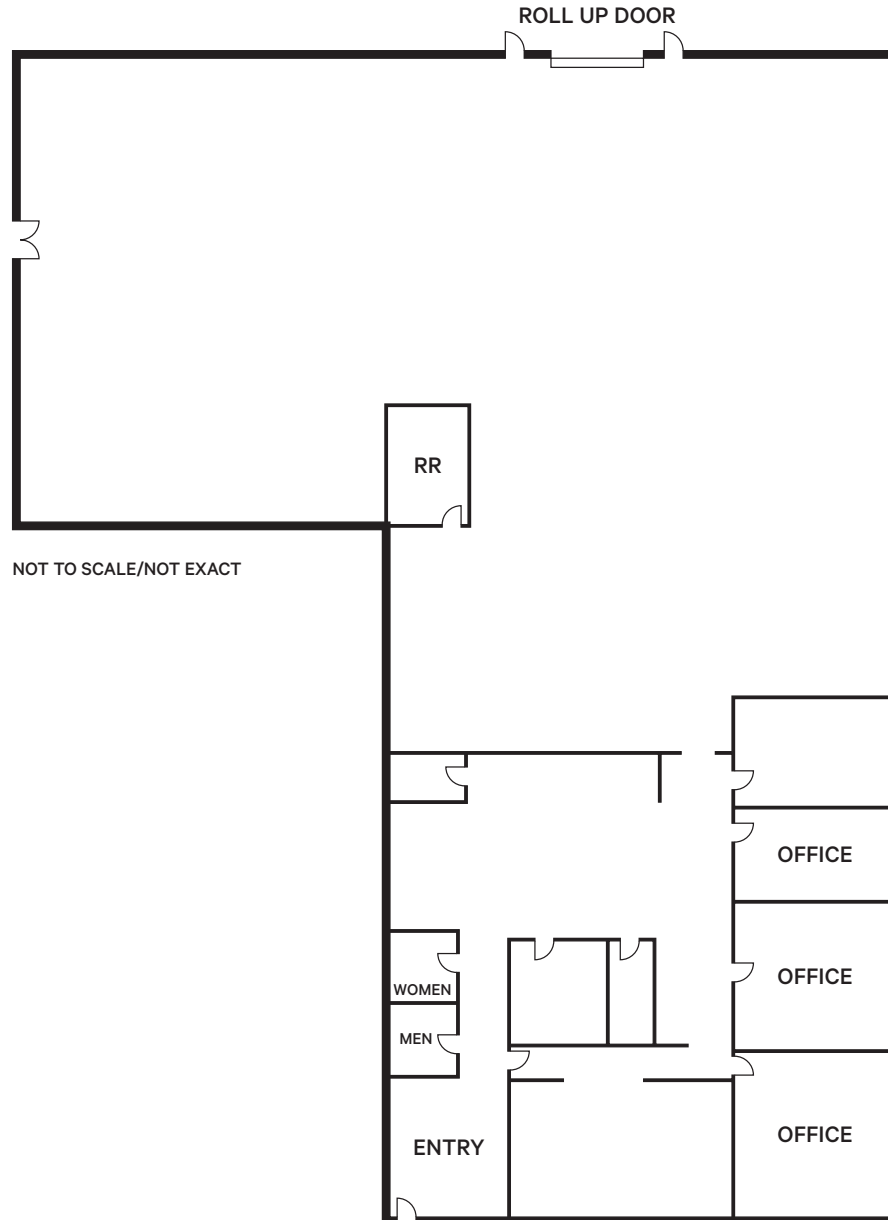
Grade Loading

400 Amps @ 240v 3-Phase
(Tenant to Verify)

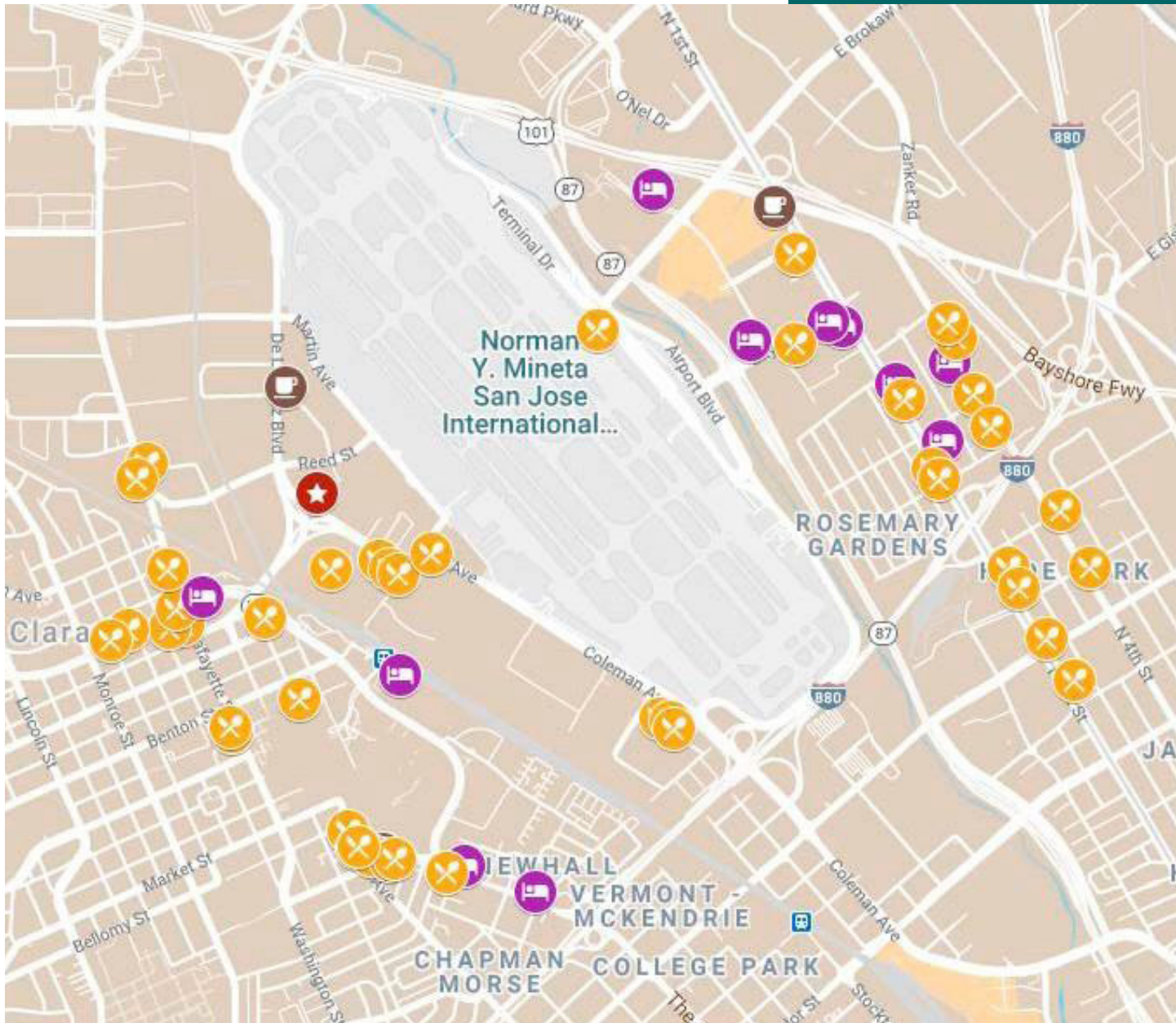
FLOOR PLAN

UNIT 6

- Office/Lab/
Warehouse
- 8,400 RSF
- Grade Loading
- 400 amps @ 240v
3-phase (Tenant to
verify)



LOCATION HIGHLIGHTS



Restaurants

- Men-Bei Ramen
- Noodle Edition
- La Costa del Sol
- White Elephant Thai Cuisine
- Euro Grill
- TOGO's Sandwiches
- Hungry Hound
- Pizza My Heart
- Wicked Chicken
- Annie's Sandwiches
- In-N-Out
- Fiorillo's
- The Happy Hooligans
- Taqueria La Veracruzana
- Greenfish Teriyaki Cafe
- Chick-fil-A
- Ike's Sandwiches
- Smoking Pig BBQ
- Akita Sushi Island Grill
- Sushi Kan



Cafe's

- Signature Cafe
- Kenny's Cafe
- Starbucks



Hotels & Lodging

- Double Tree by Hilton
- Four Points by Sheraton
- Residence Inn by Marriott
- Holiday Inn San Jose
- Courtyard by Marriott
- SpringHill Suites

1725

De La Cruz Blvd, Santa Clara, CA



FOR MORE INFORMATION,
PLEASE CONTACT

STEVEN CHON
Executive Vice President
Lic. 01476360
+1 408 453 7435
stevenkchon@cbre.com

MATT GUTIERREZ
Senior Associate
Lic. 02065613
+1 925 788 5315
matt.gutierrez@cbre.com

CBRE

©2025 CBRE, Inc. All rights reserved. This information has been obtained from sources believed reliable, but has not been verified for accuracy or completeness. You should conduct a careful, independent investigation of the property and verify all information. Any reliance on this information is solely at your own risk. CBRE and the CBRE logo are service marks of CBRE, Inc. All other marks displayed on this document are the property of their respective owners, and the use of such logos does not imply any affiliation with or endorsement of CBRE. Photos herein are the property of their respective owners. Use of these images without the express written consent of the owner is prohibited. PMStudio_October2025