



Accelerating success.



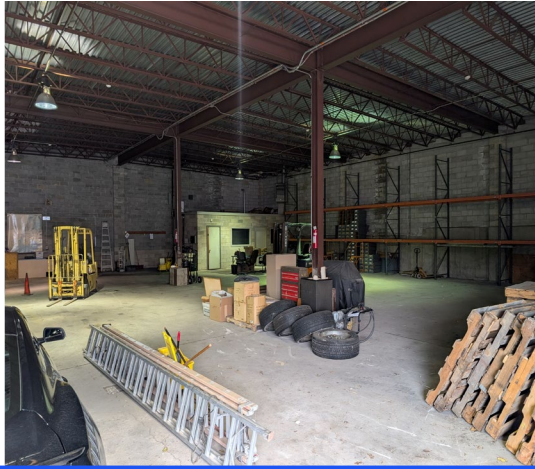
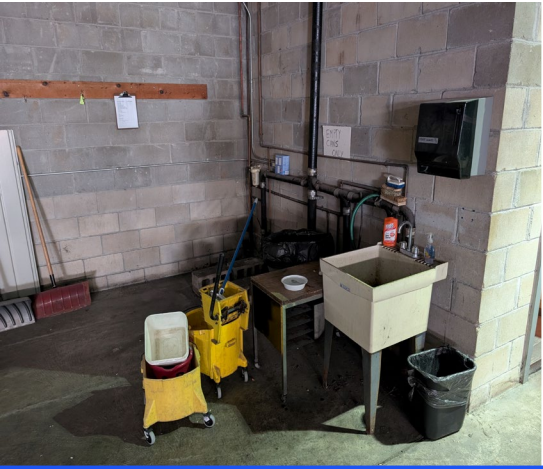
FOR LEASE

6,000 SF of Industrial space available

5 Second Street, Garden City Park, NY

Scott Silverstein
Senior Vice President
Licensed RE Broker
+1 631 374 6598
Scott.Silverstein@colliers.com

Colliers International
50 Jericho Quadrangle
Jericho, NY 11753
+1 516 284 3429
www.colliers.com

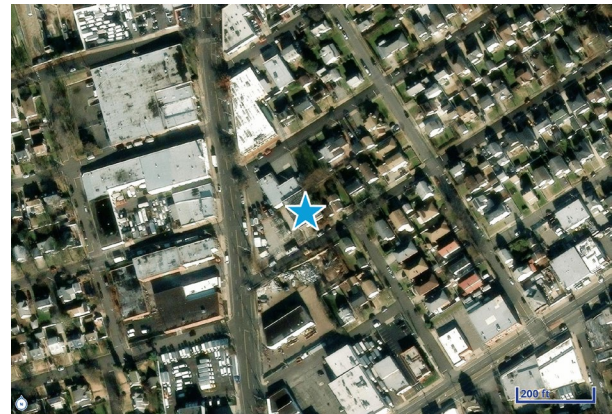


DETAILS

Square Footage	6,000 SF
Ceiling Height	18'
Column Space	25' (2 columns)
Loading	1 large drive-in door Approx 14' (w) x 17' (h)

Additional Features

- Heated warehouse
- Water in warehouse
- Floor drains
- Racking can potentially be left in warehouse
- Warehouse bathroom
- Small warehouse office



CONTACT US:

Scott Silverstein
Senior Vice President
Licensed RE Broker
+1 631 374 6598
Scott.Silverstein@colliers.com

Colliers International
50 Jericho Quadrangle
Jericho, NY 11753
+1 516 284 3429
www.colliers.com

This document/email has been prepared by Colliers for advertising and general information only. Colliers makes no guarantees, representations or warranties of any kind, expressed or implied, regarding the information including, but not limited to, warranties of content, accuracy and reliability. Any interested party should undertake their own inquiries as to the accuracy of the information. Colliers excludes unequivocally all inferred or implied terms, conditions and warranties arising out of this document and excludes all liability for loss and damages arising there from. This publication is the copyrighted property of Colliers and /or its licensor(s). © 2025. All rights reserved. This communication is not intended to cause or induce breach of an existing listing agreement.