

400 CIVIC CENTER DRIVE  
SAN RAFAEL, CA



±2,037 RSF - ±38,205 RSF // Office or Medical for Lease

**NEWMARK**

**HADEN ONGARO** 415.526.7649 [haden.ongaro@nrmk.com](mailto:haden.ongaro@nrmk.com) CA RE LIC #00916960

**ALYSSA DOYLE** 415.526.7652 [alyssa.doyle@nrmk.com](mailto:alyssa.doyle@nrmk.com) CA RE LIC #02016068

Striking exterior to complement the high visibility



Class A Office Space For Lease  
±2,037 RSF to ±38,205 RSF



\$3.75/SF, Full Service, Office  
\$4.25/SF, Full Service, Medical



Impressive first and second  
floor lobbies



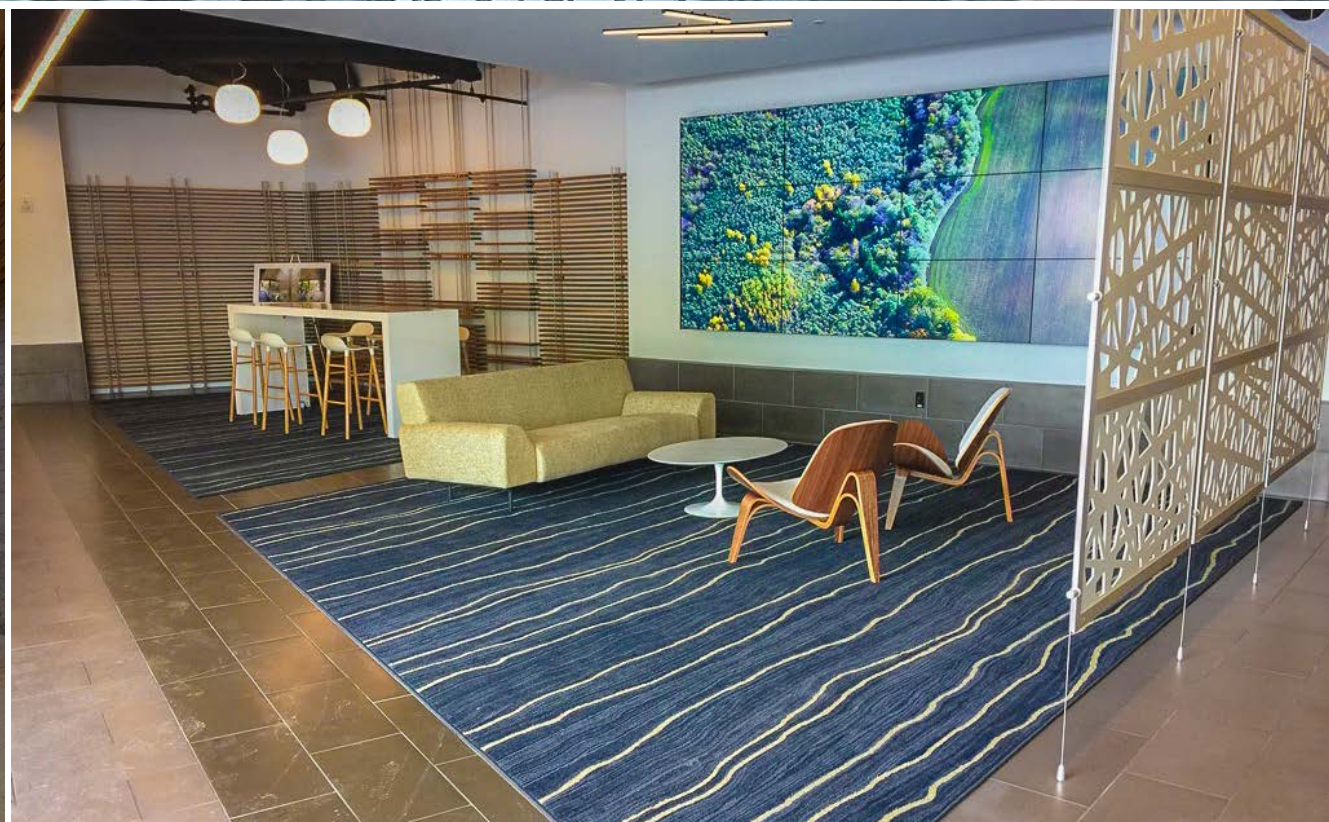
Attractive built-out office spaces  
maximizing the impact of  
stunning views



Beautiful landscaped tenant  
amenities and breezeway to  
tenant common area



Effective  
way-finding signage



# First Floor

## AVAILABLE SPACE

Suite 101	±14,609 RSF
-----------	-------------



# Third Floor

## AVAILABLE SPACE

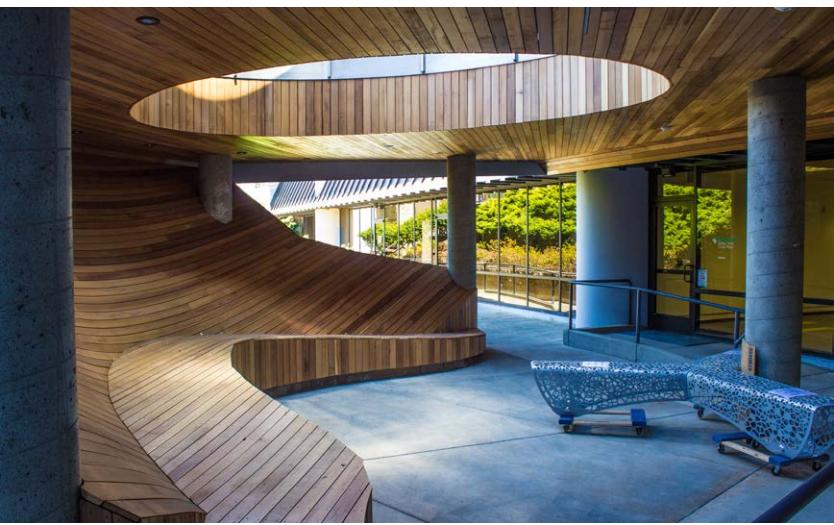
Suite 310	±8,954 RSF
Suite 325	±2,367 RSF
Suite 335	±2,037 RSF
Suite 340	±5,241 RSF
Suite 345	±4,997 RSF



# Outdoor Space



4000 CIVIC CENTER DRIVE  
SAN RAFAEL, CA





KAISER PERMANENTE

SAFeway  
BIG 5 SPORTING GOODS  
Starbucks  
FedEx Office

Walgreens

FUTURE NORTHGATE TOWN SQUARE

4000 CIVIC CENTER DRIVE  
SAN RAFAEL, CA

EMBASSY SUITES  
by Hilton

SONOMA-MARIN  
SMART  
AREA RAIL TRANSIT

MARIN CIVIC CENTER

San Francisco

Location  
a short walk to Northgate Mall Shopping Center

HADEN ONGARO 415.526.7649 haden.ongaro@nmrk.com CA RE License #00916960  
ALYSSA DOYLE 415.526.7652 alyssa.doyle@nmrk.com CA RE License #02016068

NEWMARK

1101 Fifth Avenue, Suite 370, San Rafael, CA 94901 | t 415-526-7676

The distributor of this communication is performing acts for which a real estate license is required. The information contained herein has been obtained from sources deemed reliable but has not been verified and no guarantee, warranty or representation, either express or implied, is made with respect to such information. Terms of sale or lease and availability are subject to change or withdrawal without notice. MP-712.06/24