

# OFFICE SPACE FOR LEASE

# 4 PROFESSIONAL DRIVE, SUITE 132 GAITHERSBURG, MD 20879



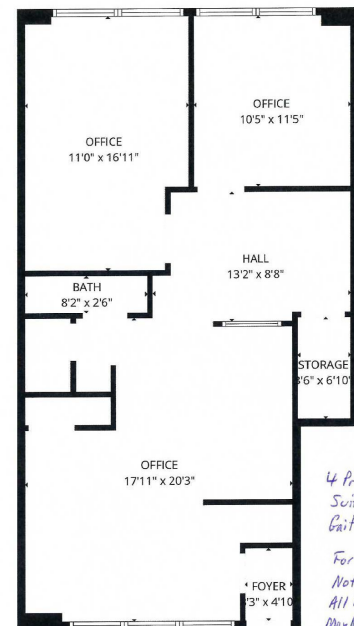
**SIZE:** Approx. 945 rentable SF.

## FEATURES

- Two exterior steps at entrance.
- Full windows front & rear.
- Abundant free parking.
- Nicely finished with a large open work area, 2 large windowed offices, storage room & private restroom.
- Tenant controlled heating & air conditioning for 24 hour use.
- Located in Montgomery Professional Park, just off Route 355 at the traffic light with Professional Drive.

## PRICING

- \$1,300/month, plus utilities.



*4 Professional Dr.  
Suite 132  
Gaithersburg, MD 20879  
For Illustration Purposes Only  
Not to Scale  
All Dimensions Approximate  
May Not Reflect Existing Conditions*

CONTACT:  
JAY CLOGG  
301.340.9400  
JAY@JAYCLOGG.COM

JAY CLOGG REALTY GROUP, INC.  
110 N. WASHINGTON STREET  
ROCKVILLE, MD 20850  
301.340.9400 • JAYCLOGG.COM

**JAY CLOGG**  
REALTY GROUP, INC.