

14 MAPLE AVENUE

Morristown, NJ 07960

Office For Sublease

6,875-13,750 SF



Leasing Information:
973.599.0050

Rick Genthe
973.599.0050
Rgenthe@lpc.com

Robert E. Lee
973.599.0050
rlee@lpc.com

Lincoln

Lincoln Property Company
9 Entin Road Suite 103
Parsippany, NJ 07054

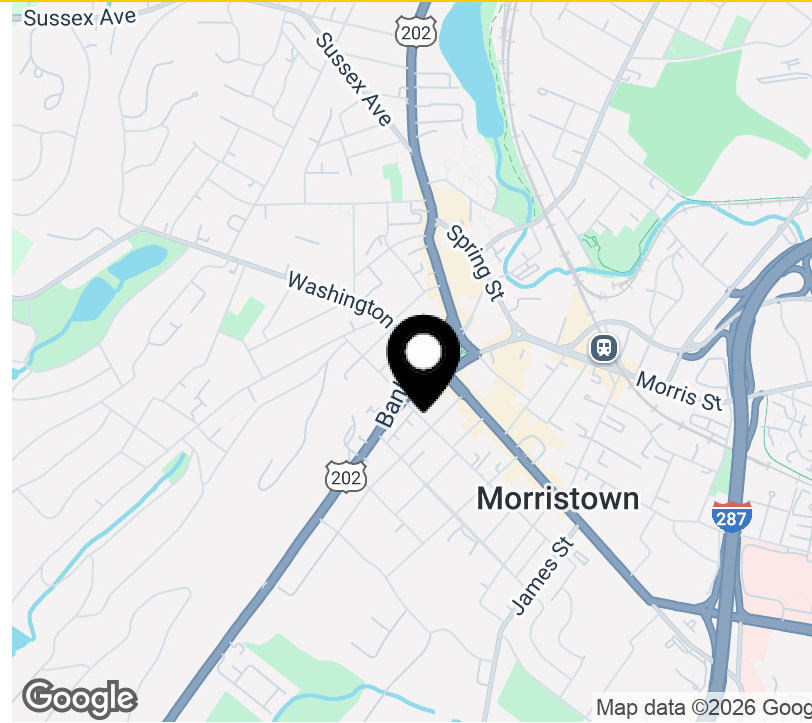
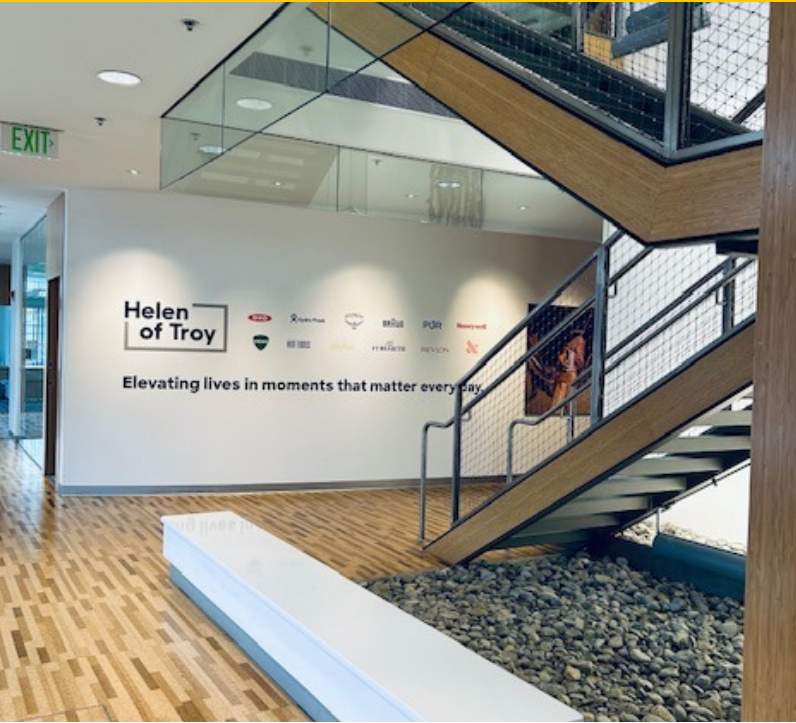
www.lpc.com

14 MAPLE AVENUE

Morristown, NJ 07960

Office For Sublease

6,875 SF



Property Highlights

- Fully-secured access
- Rooftop garden & seating
- Recent total renovation
- Fully-furnished space
- Brand new finishes
- 10 complimentary garage parking spaces
- 52 garage parking spaces available for \$80/month

Availabilities

3rd Floor	6,875 SF
4th Floor	6,875 SF

SF

Lease Rate

Negotiable
Negotiable

***3rd & 4th Floors can be combined for a total of 13,750 SF**

Sublease term through August 31, 2030

Rick Genthe

973.599.0050
Rgenthe@lpc.com

Robert E. Lee

973.599.0050
rlee@lpc.com

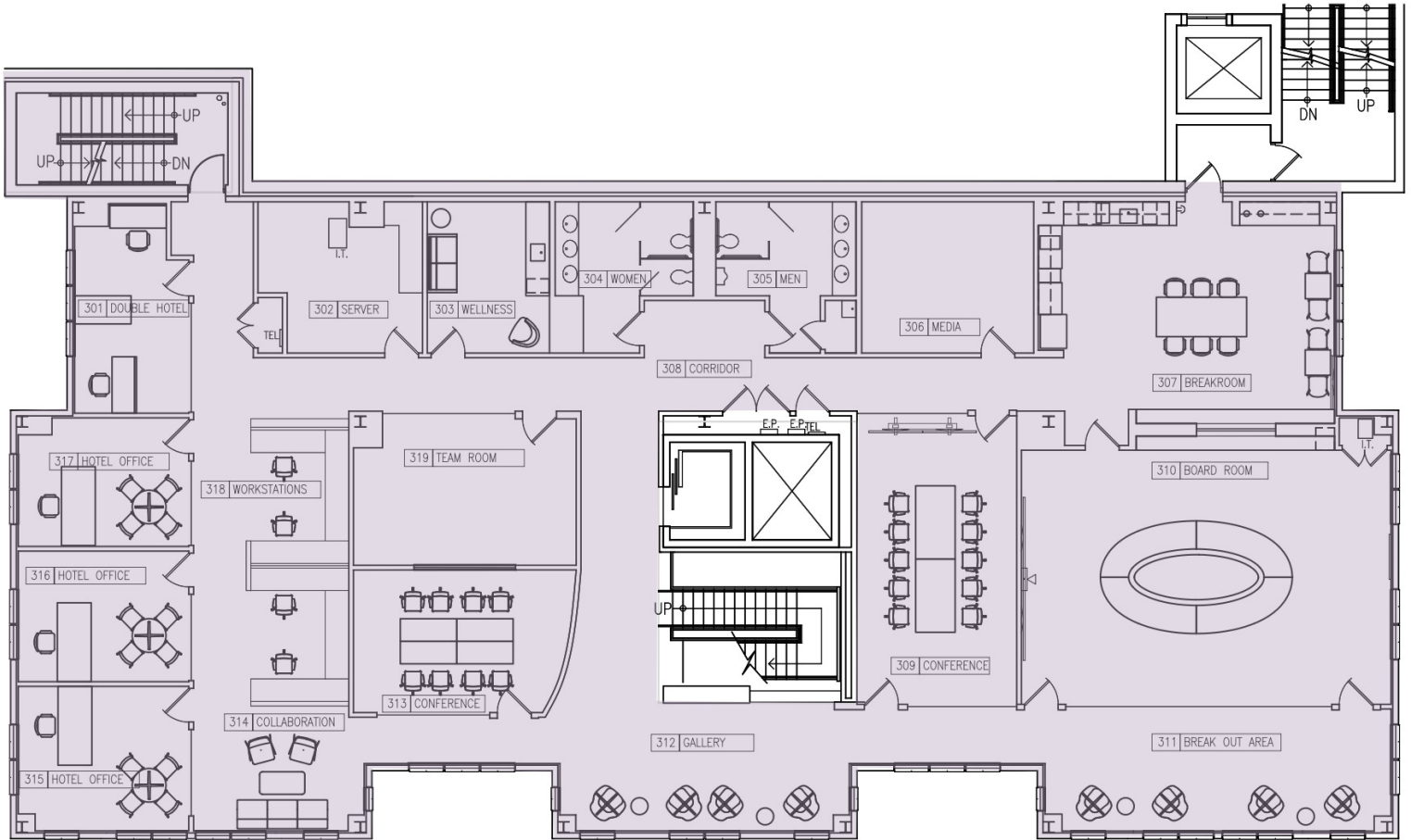
Lincoln

14 MAPLE AVENUE

Morristown, NJ 07960

3rd Floor

6,875 SF



Suite	Size	Lease Rate	Description
■ 3rd Floor	6,875 SF	Negotiable	Can be subleased with 4th floor space for total of 13,750 SF

Rick Genthe
973.599.0050
Rgenthe@lpc.com

Robert E. Lee
973.599.0050
rlee@lpc.com

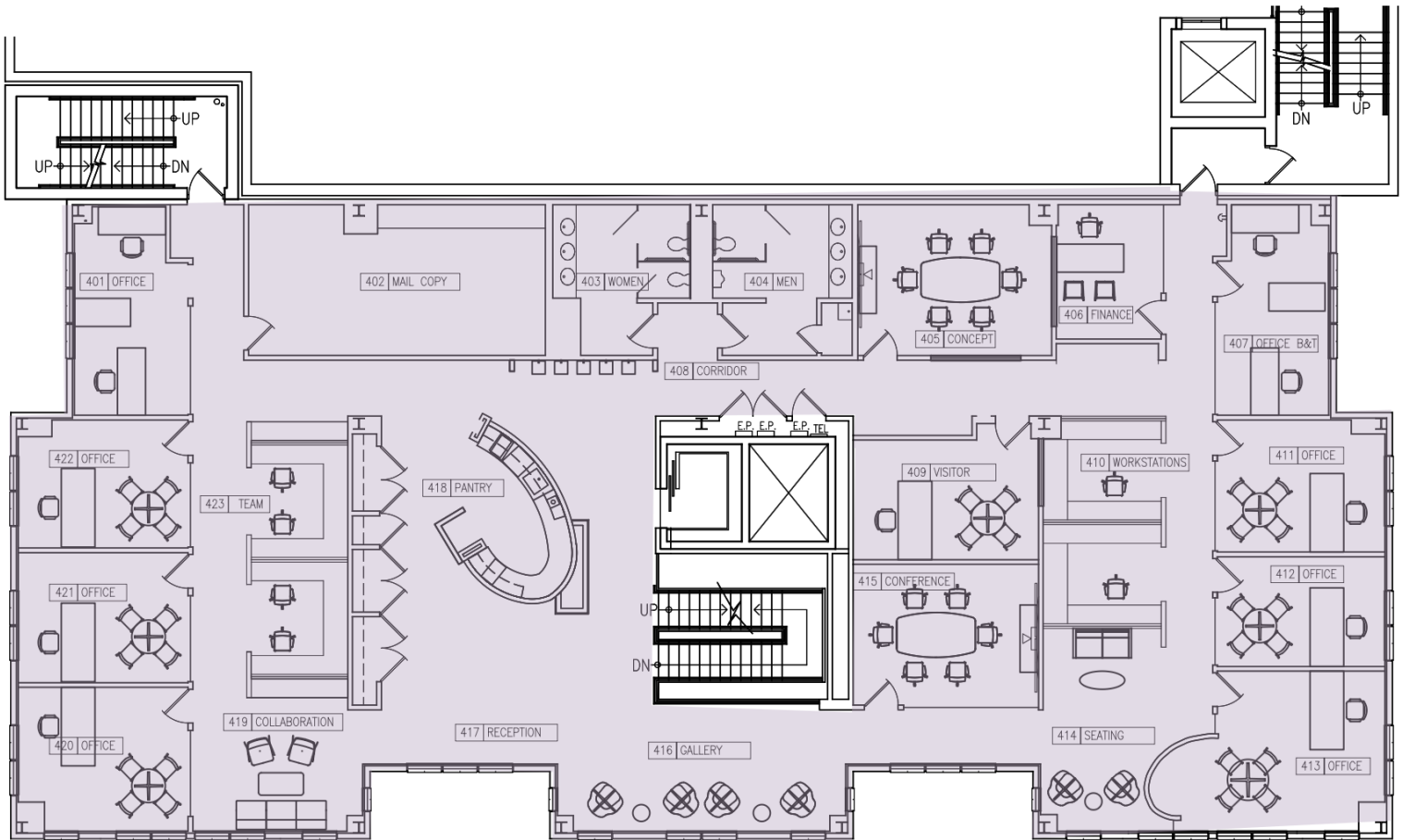
Lincoln

14 MAPLE AVENUE

Morristown, NJ 07960

4th Floor

6,875 SF



Suite	Size	Lease Rate	Description
■ 4th Floor	6,875 SF	Negotiable	Can be subleased with 3rd floor space for total of 13,750 SF

Rick Genthe
973.599.0050
Rgenthe@lpc.com

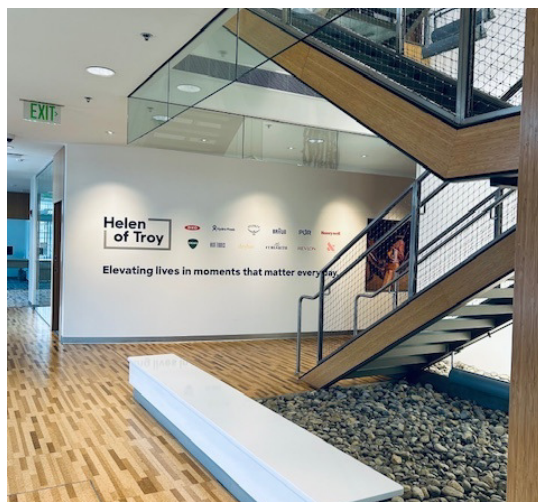
Robert E. Lee
973.599.0050
rlee@lpc.com

Lincoln

14 MAPLE AVENUE

Morristown, NJ 07960

Additional Photos



Rick Genthe

973.599.0050
Rgenthe@lpc.com

Robert E. Lee

973.599.0050
rlee@lpc.com

Lincoln

14 MAPLE AVENUE

Morristown, NJ 07960

Nearby Amenities



Rick Genthe

973.599.0050
Rgenthe@lpc.com

Robert E. Lee

973.599.0050
rlee@lpc.com

Lincoln



14 MAPLE AVENUE

Morristown, NJ 07960

Leasing Information:
973.599.0050

Rick Genthe
973.599.0050
Rgenthe@lpc.com

Robert E. Lee
973.599.0050
rlee@lpc.com

Lincoln

Lincoln Property Company
9 Entin Road Suite 103
Parsippany, NJ 07054

www.lpc.com