

**THE PLACE
TO BE
AT FISHERMAN'S
WHARF**

zephyr WALK

1-99 JEFFERSON STREET





WHAT WE'RE LOOKING FOR

HIGH QUALITY, CREATIVE, TOP CROWD PLEASING RETAILERS AND CAFES



JOIN LOCAL ATTRACTIONS & TENANTS

Ripley's Believe it or Not, Aquarium of the Bay, Red & White Fleet, Bay Tours, SkyStar Ferris Wheel, USS Panpanito Submarine Museum, Fresh Crab Stands, Boudin Bakery, It's Sugar, and Musée Mécanique to name a few!

ABOUT

COME ON BOARD ZEPHYR WALK, THE FIRST STOP AT FISHERMAN'S WHARF



727 - 10,543 SF RETAIL SPACES AVAILABLE

An entire block of street front retail

At the doorstep of Pier 39

Among the highest foot traffic counts in all of San Francisco

Adjacent to the 361-room Zephyr Hotel



An unforgettable experience of San Francisco!!

Jul 2023 • Friends

We love visiting Fisherman's Wharf since it is one of our favorite places to visit in San Francisco. We love walking around the Wharf and having lunch or dinner in one of the restaurants and ice cream in the ice cream shop and watching the sea lions. We have lived in San Francisco Bay Area for over 36 years and can never get tired of visiting Fisherman's Wharf. It is a very special place and we love to take our guests visiting from overseas there to enjoy this wonderful location and create memories of San Francisco!!

Written April 2, 2024



NEARBY AMENITIES



3,200 HOTEL ROOM COUNT



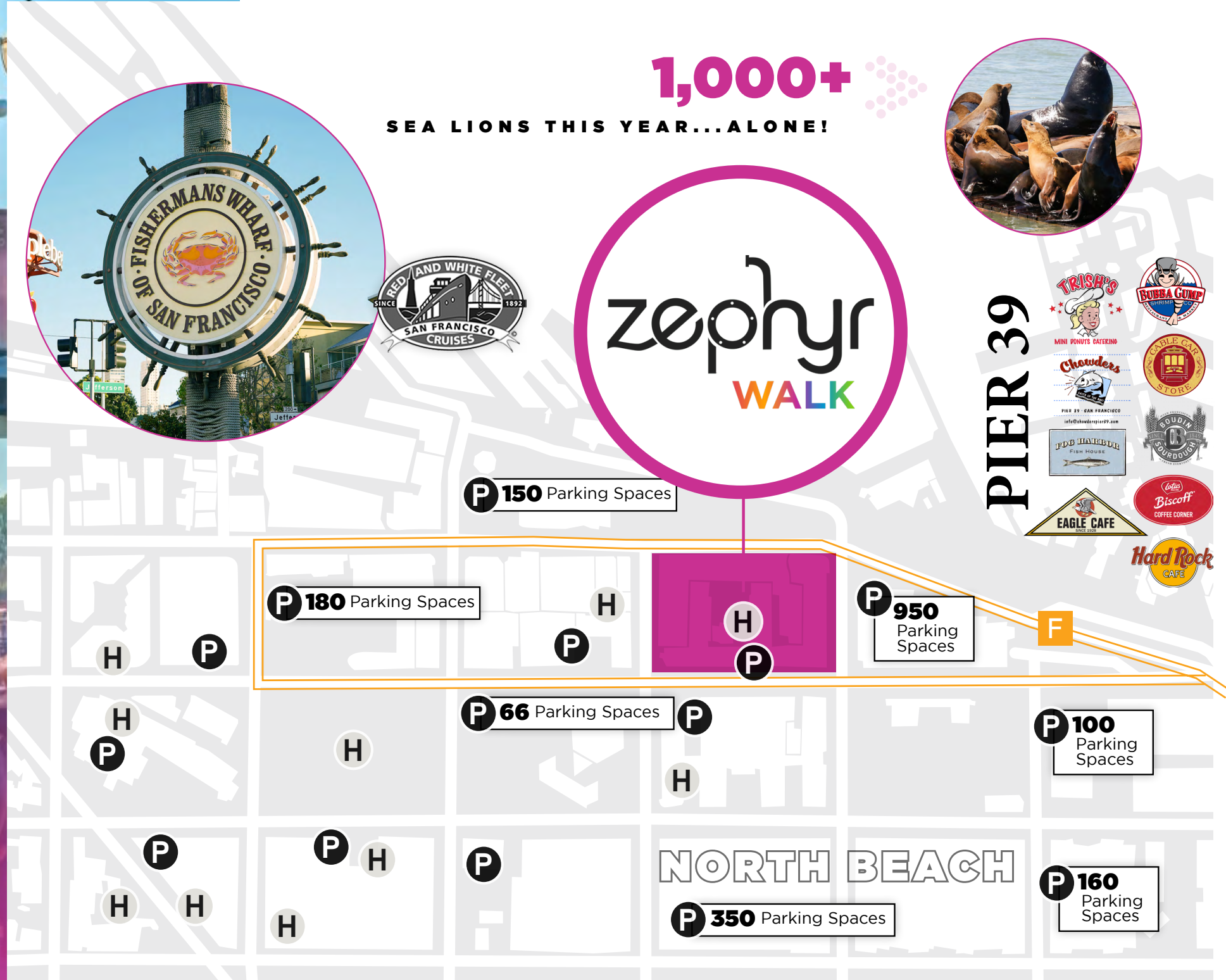
THOUSANDS OF PARKING SPOTS

MUNI F-LINE



1,000+

SEA LIONS THIS YEAR...ALONE!



LOCATION HIGHLIGHTS



882K

AVERAGE MONTHLY VISITORS



DOWNTOWN SAN FRANCISCO



RUSSIAN HILL



THE PRESIDIO



FISHERMAN'S WHARF DISTRICT



PIER 39



NORTH BEACH

DEMOGRAPHICS

36.6
MEDIAN AGE

120 MINS
AVERAGE DWELL TIME

\$114,400
MEDIAN HH INCOME
OF VISITORS

#1
SAN FRANCISCO TOURIST
DESTINATION

11 MIN BUS
FROM DOWNTOWN SF


1.8 MILE DRIVE
FROM DOWNTOWN SF

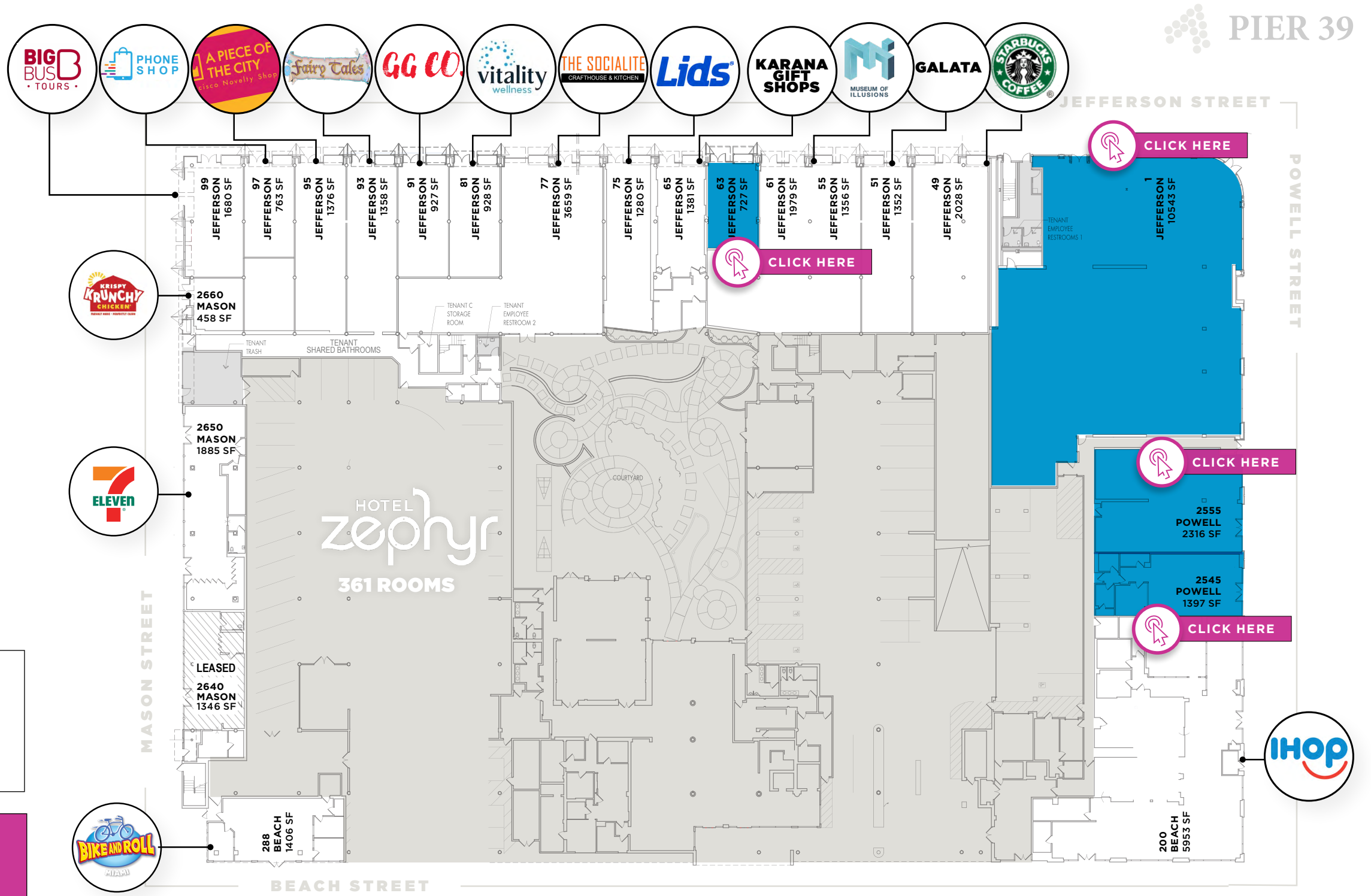
8 MIN BIKE RIDE
FROM DOWNTOWN SF



SITE PLAN

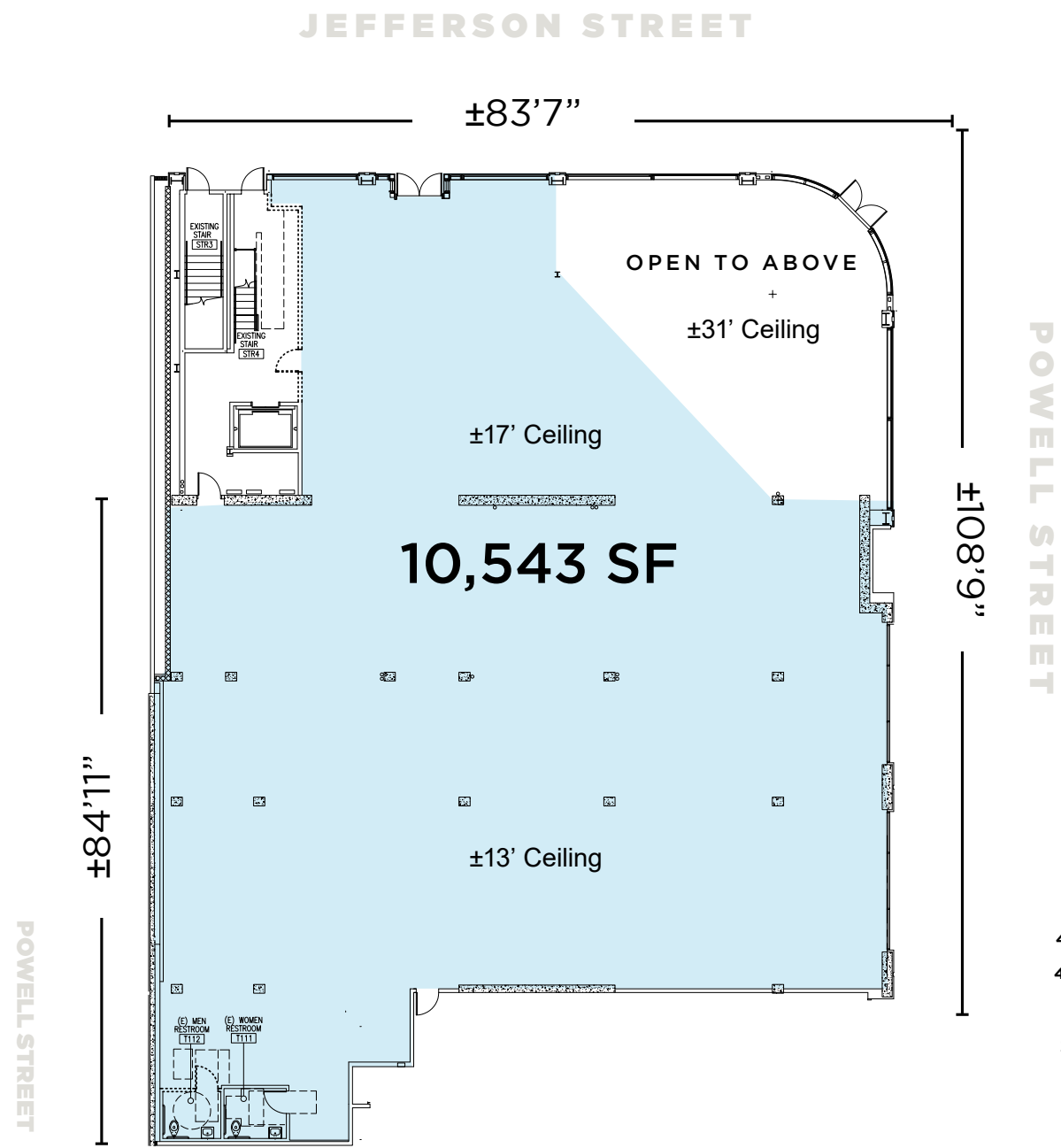
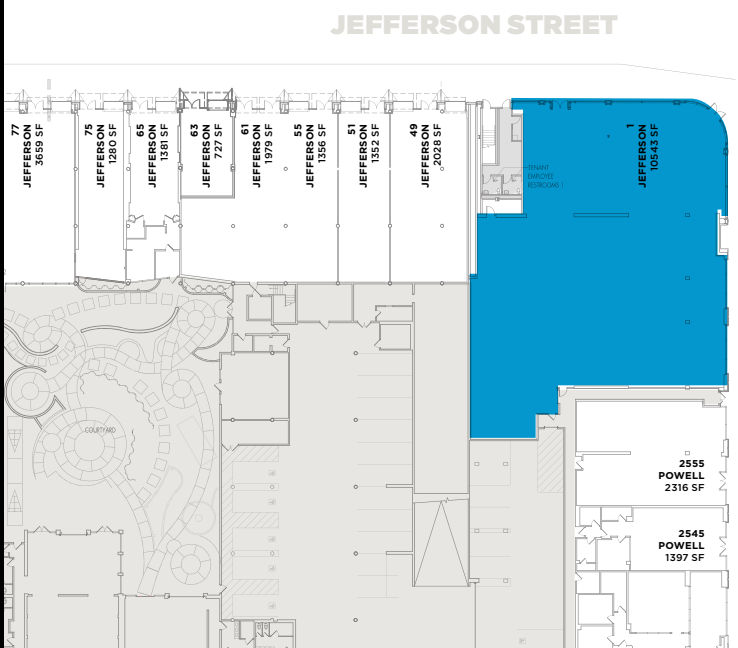
- **TRADITIONAL RETAIL SPACE**
- **RESTAURANT / CAFÉ SPACE**

 **CLICK AVAILABLE SPACE TO VIEW SITE**





FLOOR PLAN

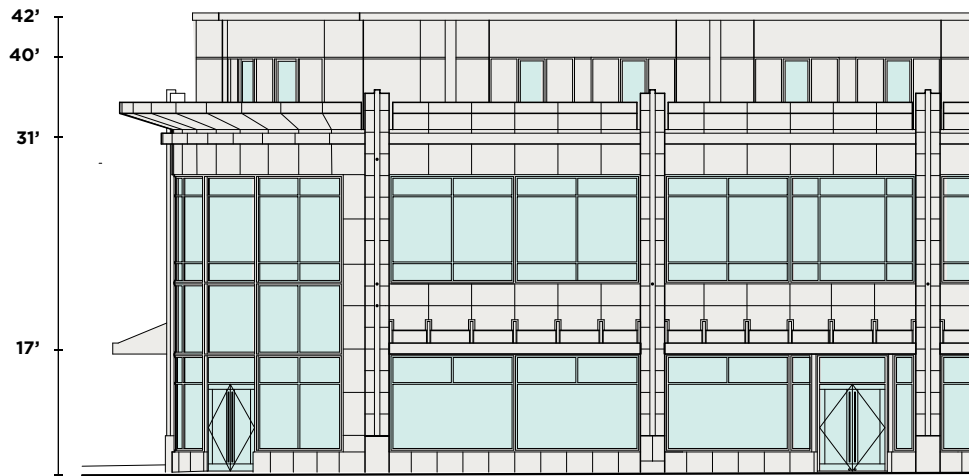


1 JEFFERSON STREET

10,543 SF

- + Traditional Retail or QSR
- + Prior tenant CVS
- + 17'-31' Ceiling Height
- + Demisable for food or entertainment retail

[CLICK HERE](#)



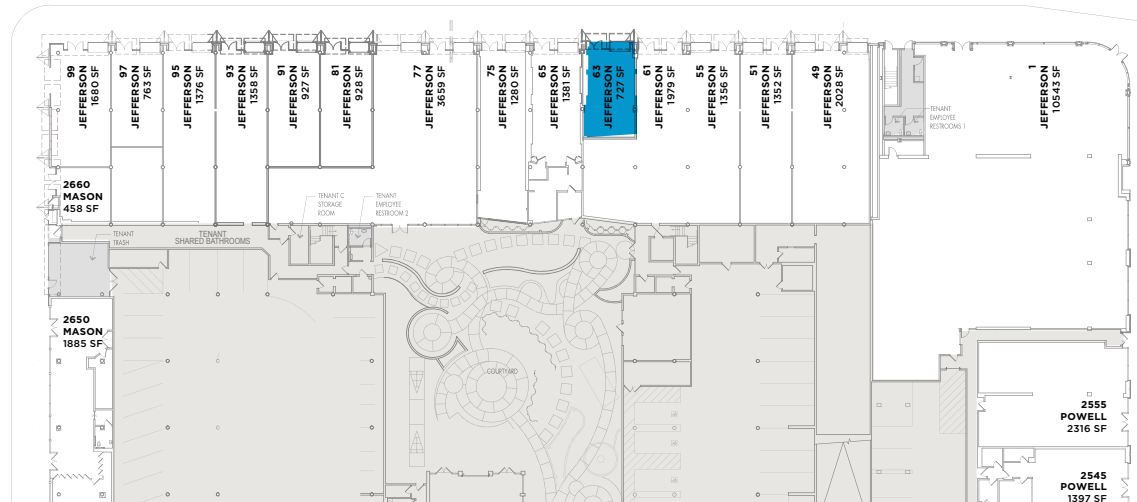
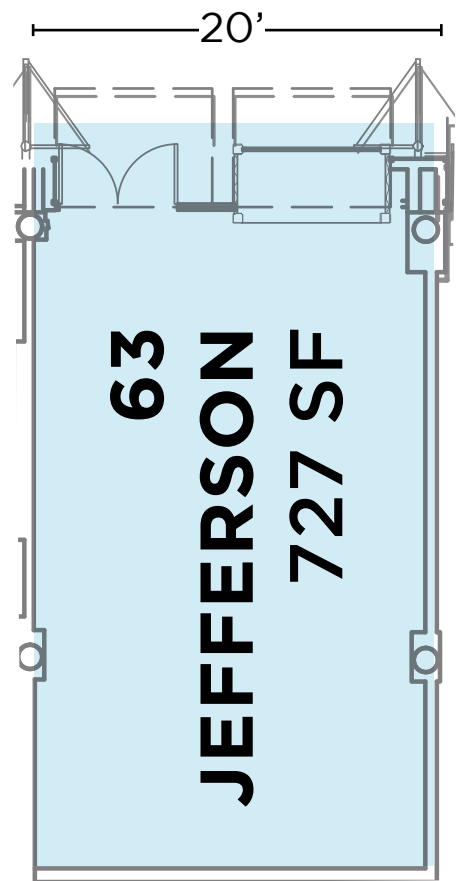


FLOOR PLAN

63 JEFFERSON STREET

727 SF
+ Traditional Retail Space
+ Prior tenant Pearl Factory

JEFFERSON STREET





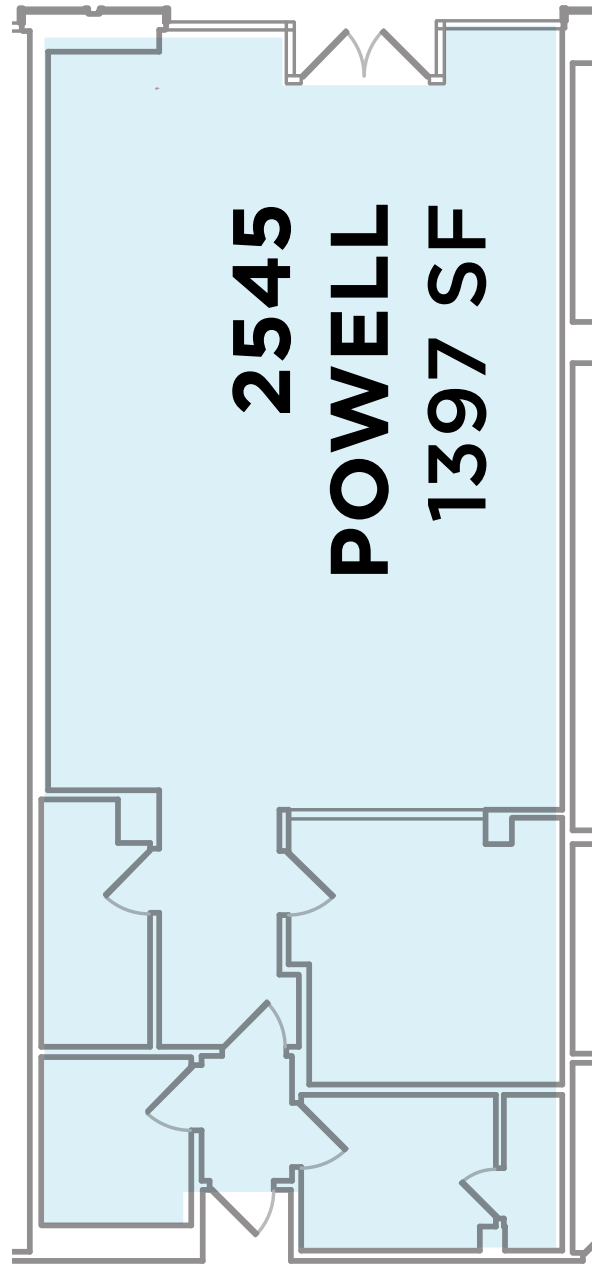
2545 POWELL STREET

1,397 SF
+ Traditional Retail Space
+ Prior tenant on the Powell

[CLICK HERE](#)



POWELL STREET
20'



FLOOR PLAN





2555 POWELL STREET

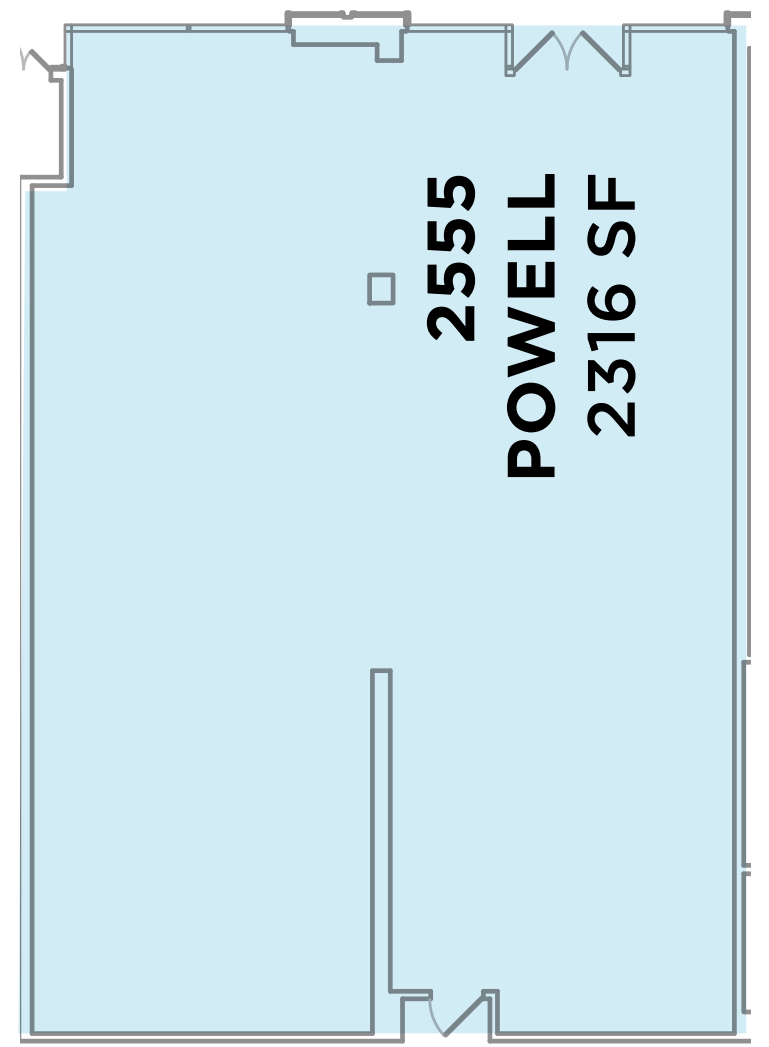
2,316 SF
+ Traditional Retail Space
+ Prior tenant Blazing Saddles

[CLICK HERE](#)



POWELL STREET

40'



**2555
POWELL
2316 SF**

FLOOR PLAN



zephyr WALK

1-99 JEFFERSON STREET

FOR RETAIL LEASING INFORMATION,
PLEASE CONTACT

**JULIE
TAYLOR**

1 415 293 6293
JULIE.TAYLOR@COLLIERS.COM
CA LIC. 00998395

**LACI JACKSON
RAVINA**

1 415 288 7897
LACI.RAVINA@COLLIERS.COM
CA LIC. 02091088

This document/email has been prepared by Colliers for advertising and general information only. Colliers makes no guarantees, representations or warranties of any kind, expressed or implied, regarding the information including, but not limited to, warranties of content, accuracy and reliability. Any interested party should undertake their own inquiries as to the accuracy of the information. Colliers excludes unequivocally all inferred or implied terms, conditions and warranties arising out of this document and excludes all liability for loss and damages arising there from. This publication is the copyrighted property of Colliers and /or its licensor(s). © 2025. All rights reserved. This communication is not intended to cause or induce breach of an existing listing agreement.

