

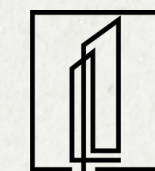


Turnkey Commissary Kitchen for Lease
Potential secure yard for parking catering
trucks if needed.

DTLA

1225 E Washington Blvd, Los Angeles 90021

UNIT A



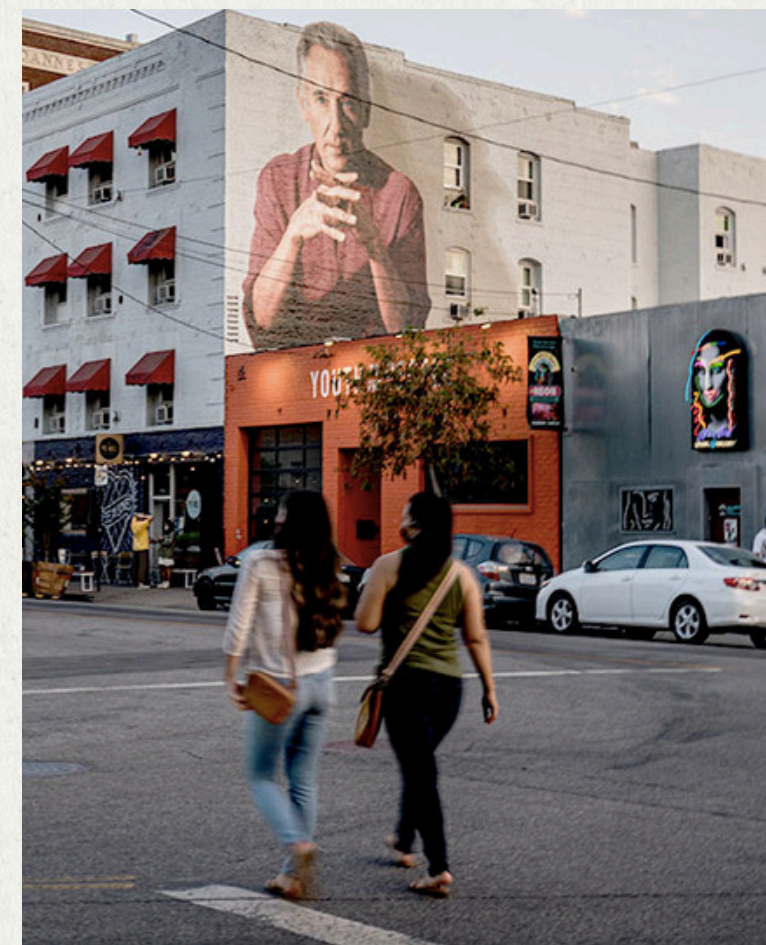
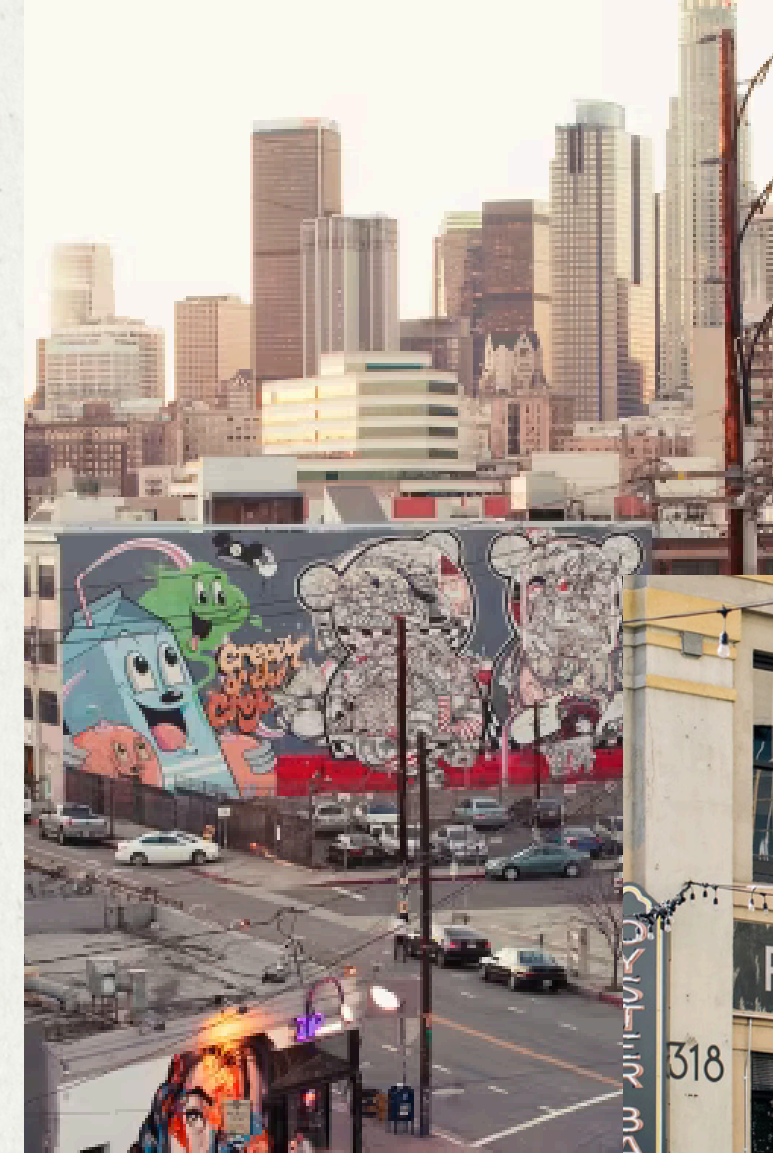
URBANLIME
REAL ESTATE

Location

Downtown | Los Angeles

1225 E Washington Blvd, Unit A, offers a 1,350 SF turnkey commissary kitchen in the heart of DTLA. Fully equipped and move-in ready, the space features a 15'x7' walk-in freezer, a 26'x14' walk-in cooler, ample dry storage, an ADA-compliant bathroom, and included FF&E, making it ideal for catering, ghost kitchen, or food production operations.

Just minutes from the vibrant Arts District, home to celebrated restaurants like Zinc Café, Bestia, and Kodo, as well as Soho House, the property also benefits from proximity to the Fashion District, Grand Central Market, and cultural landmarks like the Grammy Museum and the Bradbury Building. With nearby lifestyle destinations such as the Downtown Proper Hotel and Soho Warehouse, this location offers exceptional connectivity to the culinary, cultural, and creative energy of DTLA.



Basic Terms

Term	10 year
SF Int.	1,350 sf
Commencement	Upon Lease
Expiration	01-MAY-2032
Parking	2 Reserved Spaces
Current Base	\$5,190.45
Key money	Negotiable (owner says bring your offer)
Annual increases	3%
Options	TWO / FIVE YEAR





Property Details

Size: 1,350 sf

Turnkey Commissary

Walk-in Freezer: 15'x7'

Walk-in Cooler: 26'x14'

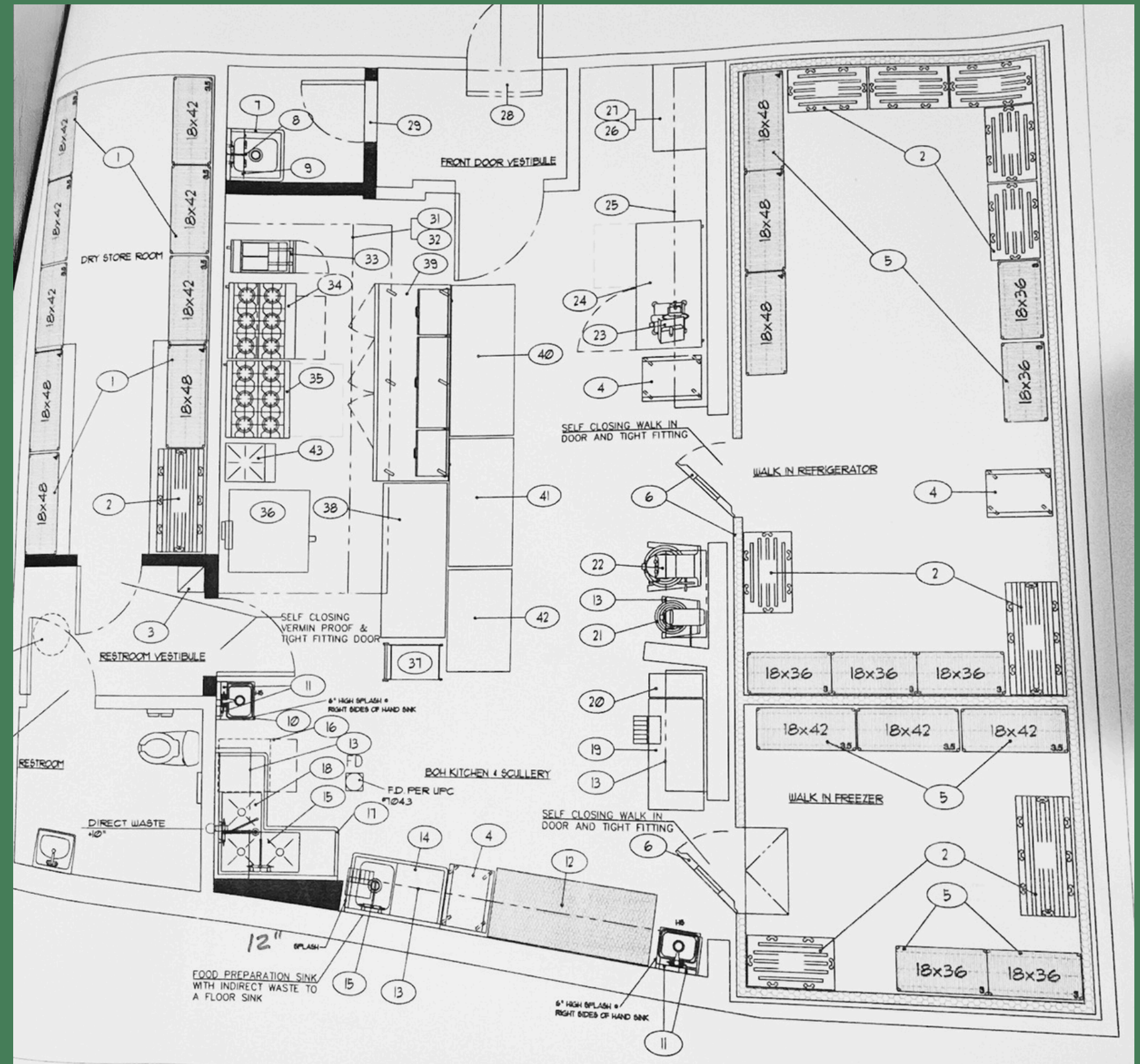
ADA Bathroom

Dry Storage Area

Some FF&E Included

15-Foot Hood System

USDA approved for the production of desserts, meats, and sauces.



MARU

Rappahannock
— OYSTER CO. —

reSoblu



Dume

BESTIA

GIRL & THE GOAT
LOS ANGELES

Neighboring Tenants



Contact

Dan Fagan

Executive Vice President

310-430-3436

DanFagan@urbanlimere.com

DRE# 01363082

Richard Cheng

Vice President

562-881-6231

Richard@urbanlimere.com

DRE# 02055718

Disclaimer: Information herein has been secured from sources believed to be reliable; however, no representation or warranty, express or implied, is made regarding the accuracy or completeness of such information. All measurements, including square footage, are approximate. Buyer/Tenant shall independently verify all information.