

FOR LEASE

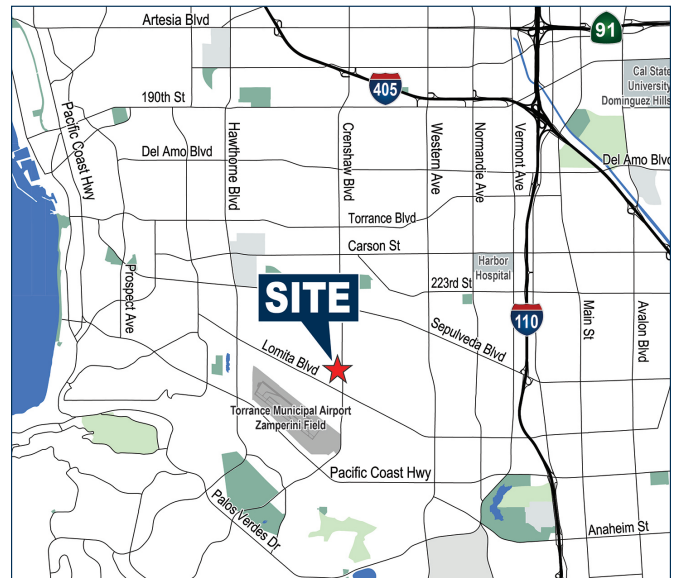
±2,845 SF OFFICE SPACE

23705 CRENSHAW BLVD | TORRANCE | CA



PROPERTY FEATURES

- ± 2,845 SF Second Story Office Space
- 6 Private Offices
- Large Open Office Area
- Break Room
- Storage Rooms
- Excellent Glassline and Exposure to Crenshaw Blvd.
- Professionally Managed Building
- Access to Multiple Nearby Retail Amenities
- Competitive Lease Rate
- Available January 1, 2026



EXCLUSIVELY OFFERED BY:

Voit
REAL ESTATE SERVICES

CARGILE
COMMERCIAL GROUP



LOREN CARGILE

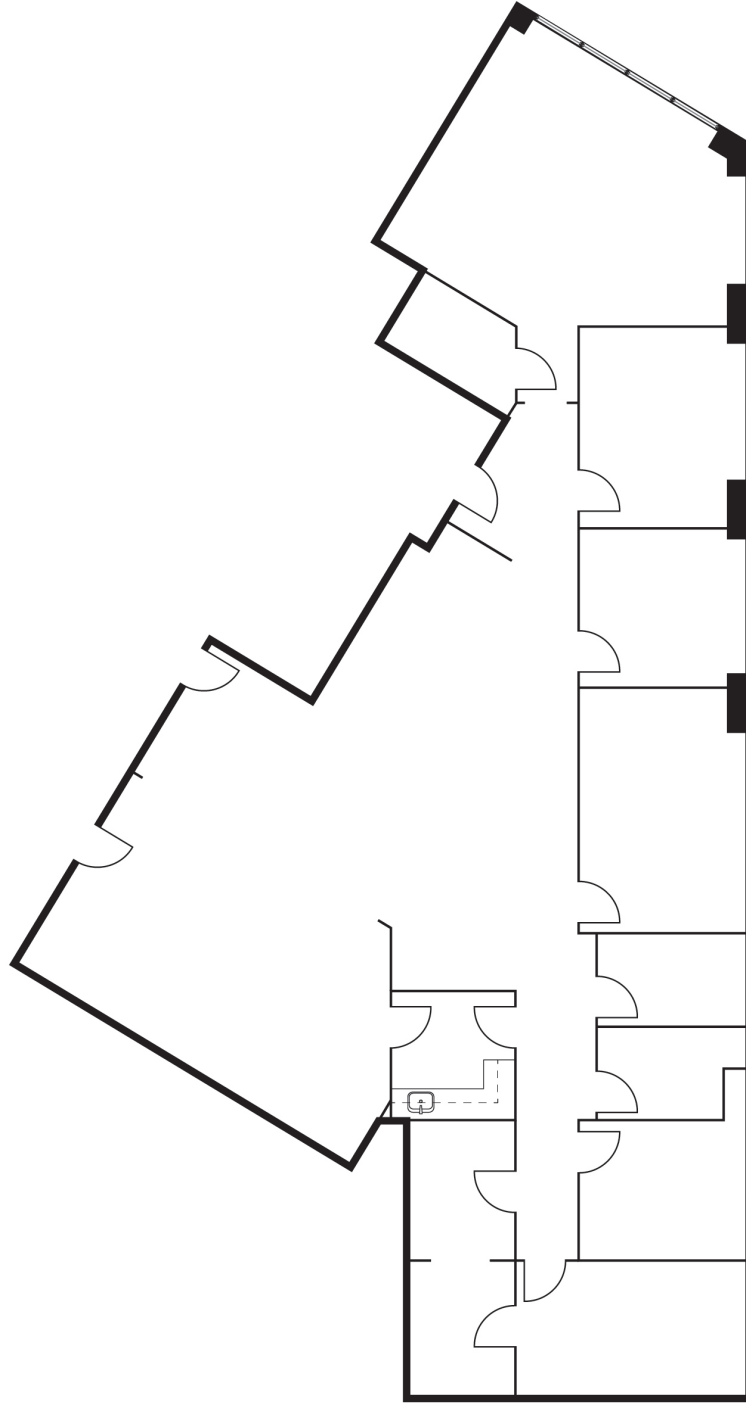
Vice President | Partner
License #01431329

(424) 329-7515
LCargile@voitco.com

2020 Main Street, Suite 100 | Irvine, CA 92614 | www.voidco.com

The information contained herein has been obtained from sources we deem reliable. While we have no reason to doubt its accuracy, we do not guarantee it. Licensed as Real Estate Salespersons by the DRE. ©2024 Voit Real Estate Services, Inc. All Rights Reserved. License #01991785.

FLOOR PLAN



EXCLUSIVELY OFFERED BY:



LOREN CARGILE

Vice President | Partner
License #01431329

(424) 329-7515
LCargile@voitco.com

AMENITIES MAP



EXCLUSIVELY OFFERED BY:



LOREN CARGILE

Vice President | Partner
License #01431329

(424) 329-7515
LCargile@voitco.com