



Sublease Available

2600 Virginia Avenue, NW

Washington, DC 20037

Overview

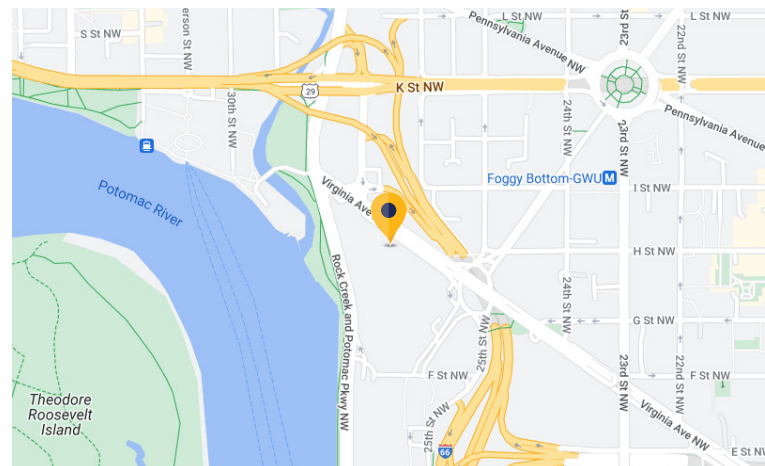
Premises:	5th Floor: 6,738 square feet
Rental Rate:	\$37.50/RSF
Availability:	Immediate
Term:	Through December 31, 2027
Submarket:	West End

Features

- River views
- Fully furnished
- Cabled/wired and ready to go

Building Amenities

- Renovated Lobby
- Direct Access to Hotel
- Private Spa-Quality Fitness Center
- Secure Tenant-Only Bike Storage
- Shared Conferencing Facilities and Spacious Tenant Lounge



For More Information



Sam Heiber

301.651.1386
sheiber@cresa.com



Josh Freedomberg

301.538.0939
jfreedenberg@cresa.com



Natalie Gosnell

240.281.9110
ngosnell@cresa.com

Cresa

1800 M Street, NW
Suite 300N
Washington, DC 20036
cresa.com/washingtondc

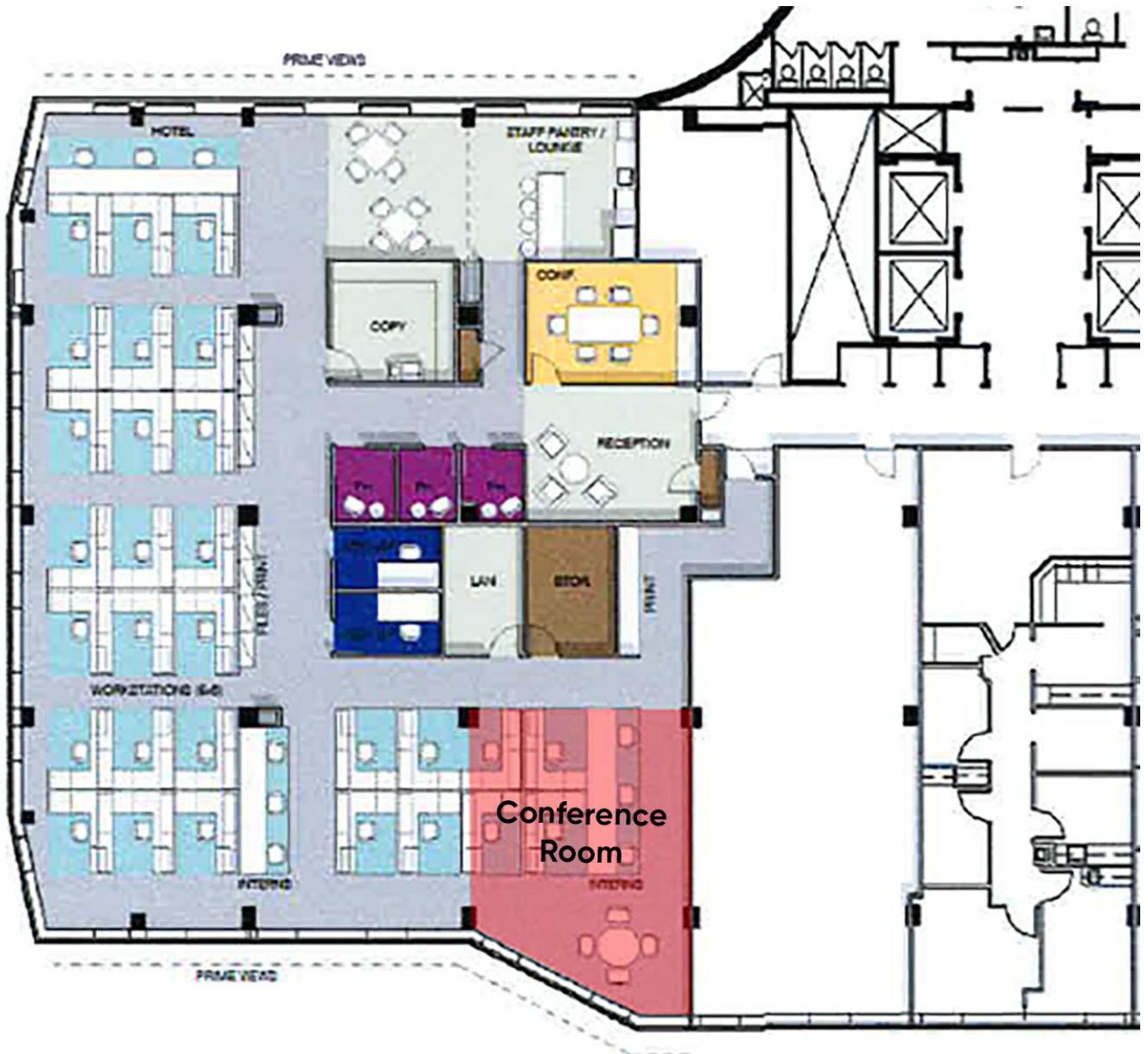
Sublease Available



2600 Virginia Avenue, NW

Washington, DC 20037

Floor Plan



Sam Heiber
301.651.1386
sheiber@cresa.com



Josh Freedenberg
301.538.0939
jfreedenberg@cresa.com



Natalie Gosnell
240.281.9110
ngosnell@cresa.com

Cresa
1800 M Street NW, Suite 300N
Washington, DC 20036

Sublease Available



2600 Virginia Avenue, NW

Washington, DC 20037

Interior Photos



Sam Heiber
301.651.1386
sheiber@cresa.com



Josh Freedenberg
301.538.0939
jfreedenberg@cresa.com



Natalie Gosnell
240.281.9110
ngosnell@cresa.com

Cresa
1800 M Street NW, Suite 300N
Washington, DC 20036