

PROPERTY FEATURES



BUILDING SIZE

±3,552 sq.ft.

LOT SIZE

±3,875 sq.ft.



PARCELS

APN #: 142-091-039 & 142-091-040



ZONING

Office Bldg (General)

PROPERTY HIGHLIGHTS

- Executive Office Space
- Available Square Feet: 120 - 2,800
- Centrally located in the City of Riverside



INLAND EMPIRE

CAL DRE # 02120868

KW COMMERCIAL
3595-1 Inland Empire Blvd. Suite 1250
Ontario, CA 91764
909.980.6868

FOR LEASE

4181 Flat Rock Dr.,
Riverside, CA 92505



Jeff Mordhorst
909.935.0932

Jeff.Mordhorst@KWCommercial.com
CalDRE Lic. #01999766
KW Commercial Inland Empire

Rene Ramos, Jr.
909.980.6868

Rene.Ramos@kwcommercial.com
CalDRE Lic. #01836872
KW Commercial Inland Empire

Marshal Solis
909.935.0931

m.solis@kwcommercial.com
CalDRE Lic. 01779961 **Keller William's**
Corona DRE-01406566

WE OBTAINED THE INFORMATION ABOVE FROM SOURCES WE BELIEVE TO BE RELIABLE. HOWEVER, WE HAVE NOT VERIFIED ITS ACCURACY AND MAKE NO GUARANTEE, WARRANTY, OR REPRESENTATION ABOUT IT. IT IS SUBMITTED SUBJECT TO THE POSSIBILITY OF ERRORS, OMISSIONS, CHANGE OF PRICE, RENTAL OR OTHER CONDITIONS, PRIOR SALE, LEASE OR FINANCING, OR WITHDRAWAL WITHOUT NOTICE. WE INCLUDE PROJECTIONS, OPINIONS, ASSUMPTIONS OR ESTIMATES FOR EXAMPLE ONLY, AND THEY MAY NOT REPRESENT CURRENT OR FUTURE PERFORMANCE OF THE PROPERTY. YOU AND YOUR TAX AND LEGAL ADVISORS SHOULD CONDUCT YOUR OWN INVESTIGATION OF THE PROPERTY AND TRANSACTION.



Jeff Mordhorst
909.935.0932
Jeff.Mordhorst@KWCommercial.com
CalDRE Lic. #01999766
KW Commercial Inland Empire

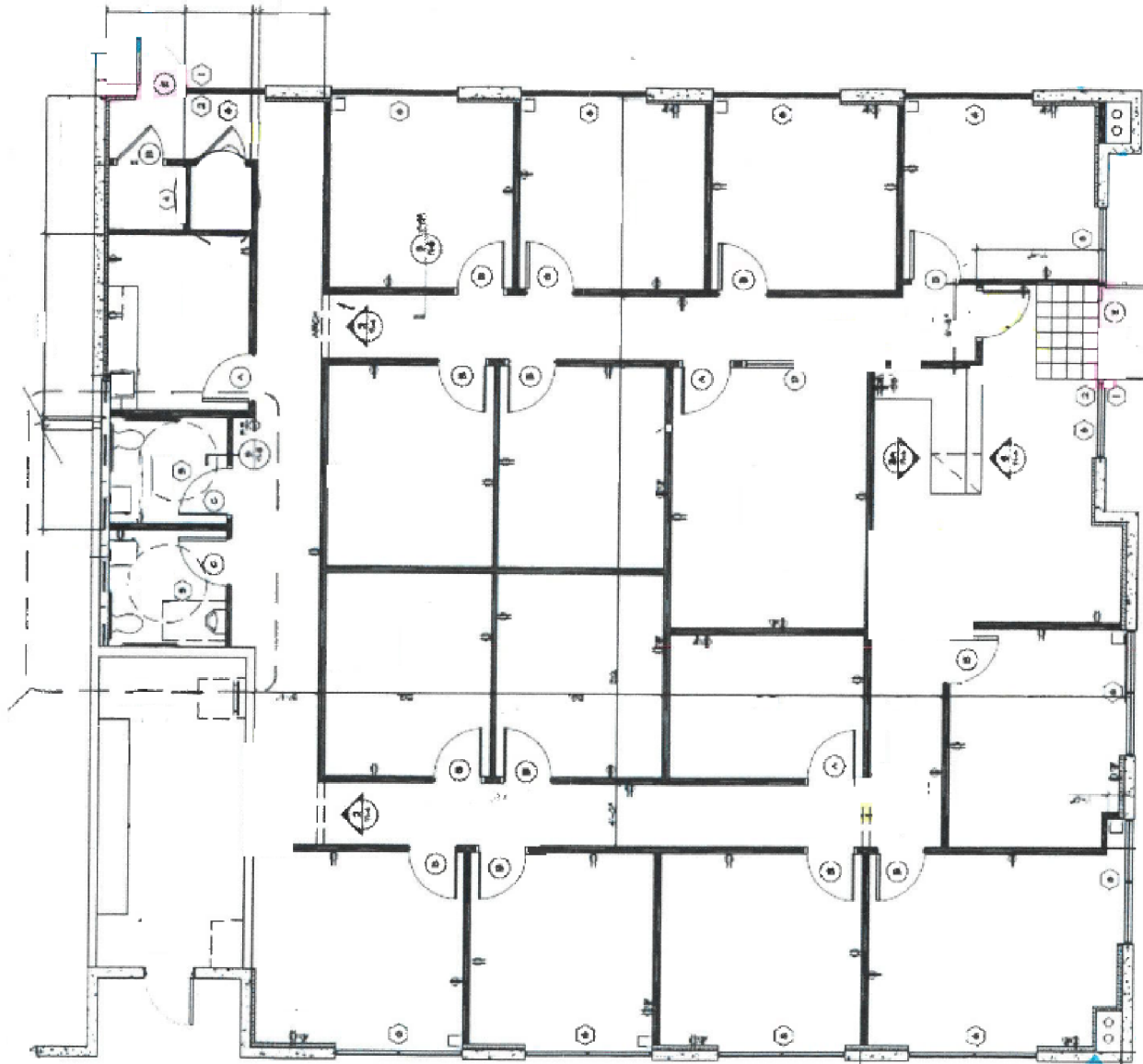
Rene Ramos, Jr.
909.980.6868
Rene.Ramos@kwcommercial.com
CalDRE Lic. #01836872
KW Commercial Inland Empire

Marshal Solis
909.935.0931
m.solis@kwcommercial.com
CalDRE Lic. #01779961
KW Corona



**INLAND
EMPIRE**

CAL DRE # 02120868



Jeff Mordhorst
909.935.0932
Jeff.Mordhorst@KWCommercial.com
CalDRE Lic. #01999766
KW Commercial Inland Empire

Rene Ramos, Jr.
909.980.6868
Rene.Ramos@kwcommercial.com
CalDRE Lic. #01836872
KW Commercial Inland Empire

Marshal Solis
909.935.0931
m.solis@kwcommercial.com
CalDRE Lic. #01779961
KW Corona



**INLAND
EMPIRE**

CAL DRE # 02120868