

For Lease

# FREEWAY FRONTAGE SHOWROOM WAREHOUSE

Maple Lewis Business Center

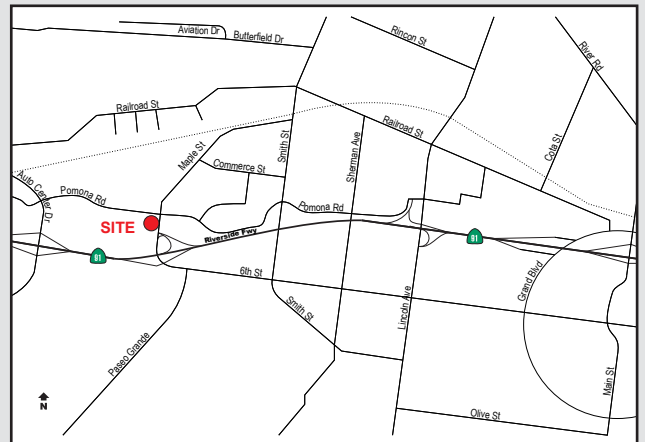
±1,920 Square Feet

330 Maple Street, Unit E, Corona



## Property Details

- ±820 SF of Warehouse Space
- Maple Street Frontage
- High Identity Building Signage
- 2:1 Parking Ratio
- 1 Ground Level Door
- 14' Warehouse Height
- 100 Amps Electrical Service
- Well Maintained Business Park
- Immediate Access to Riverside (91) Freeway



**Reed Rutter**  
SENIOR ASSOCIATE  
949.933.5744  
RRutter@voitco.com  
Lic. #02153762

**Michael Zehner**  
SENIOR VICE PRESIDENT  
714.935.2328  
mczehner@voitco.com  
Lic. # 01917963

**Voit**  
REAL ESTATE SERVICES

2020 Main Street, Suite 100 | Irvine, California 92614 | 949.851.5100 | 949.261.9092 Fax | Lic #01991785 | www.VoitCo.com

Licensed as Real Estate Salespersons by the CA DRE. The information contained herein has been obtained from sources we deem reliable. While we have no reason to doubt its accuracy, we do not guarantee it. ©2026 Voit Real Estate Services, Inc. All Rights Reserved. License #01991785.

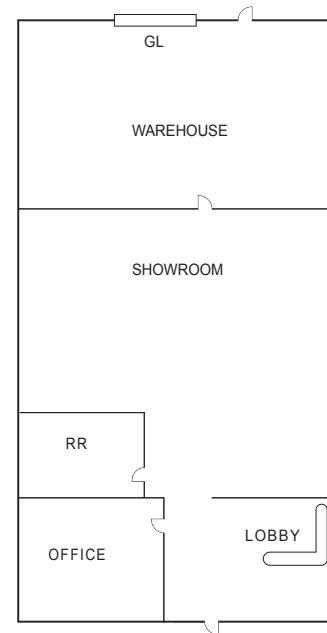
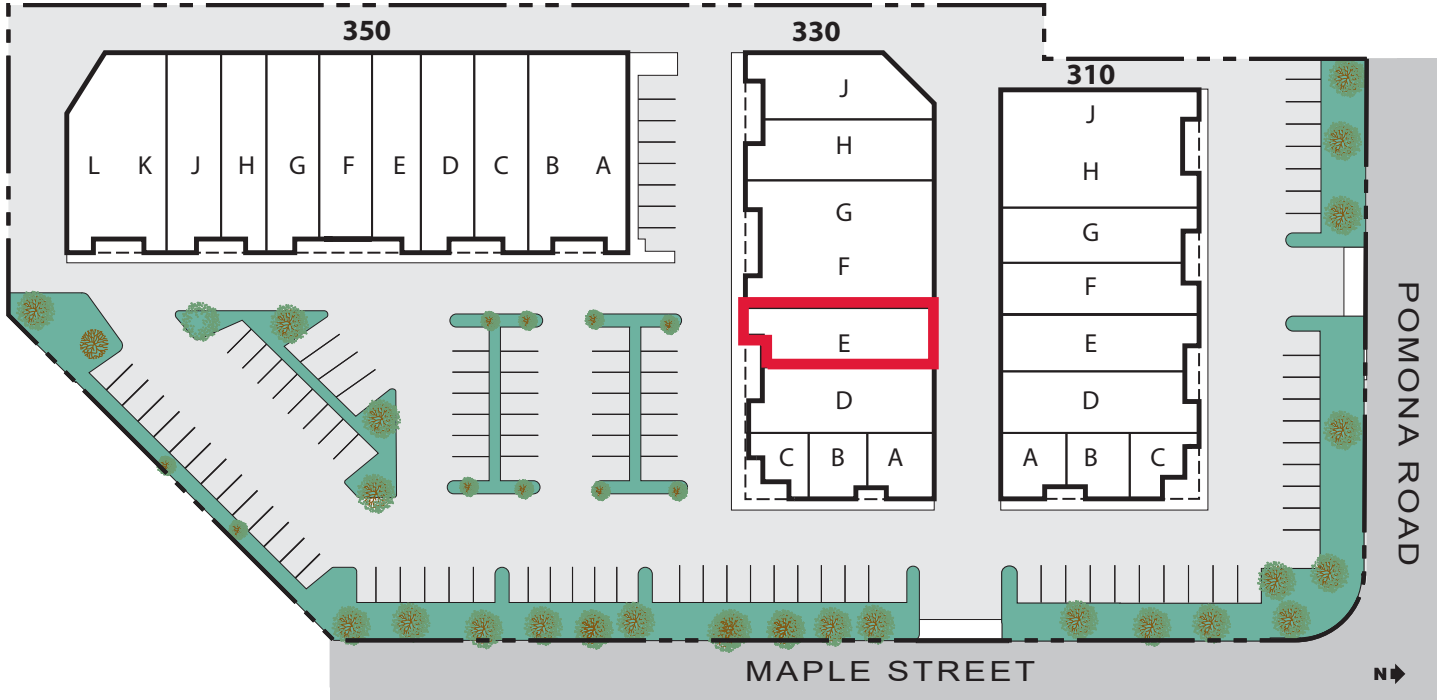
For Lease

# FREEWAY FRONTAGE SHOWROOM WAREHOUSE

## Maple Lewis Business Center

### ±1,920 Square Feet

330 Maple Street, Unit E, Corona



**Reed Rutter**  
SENIOR ASSOCIATE  
949.933.5744  
RRutter@voitco.com  
Lic. #02153762

**Michael Zehner**  
SENIOR VICE PRESIDENT  
714.935.2328  
mczehner@voitco.com  
Lic. # 01917963

**Voit**  
REAL ESTATE SERVICES

2020 Main Street, Suite 100 | Irvine, California 92614 | 949.851.5100 | 949.261.9092 Fax | Lic #01991785 | www.VoitCo.com

Licensed as Real Estate Salespersons by the CA DRE. The information contained herein has been obtained from sources we deem reliable. While we have no reason to doubt its accuracy, we do not guarantee it. ©2026 Voit Real Estate Services, Inc. All Rights Reserved. License #01991785.