

GALAX PLAZA

Galax, Virginia

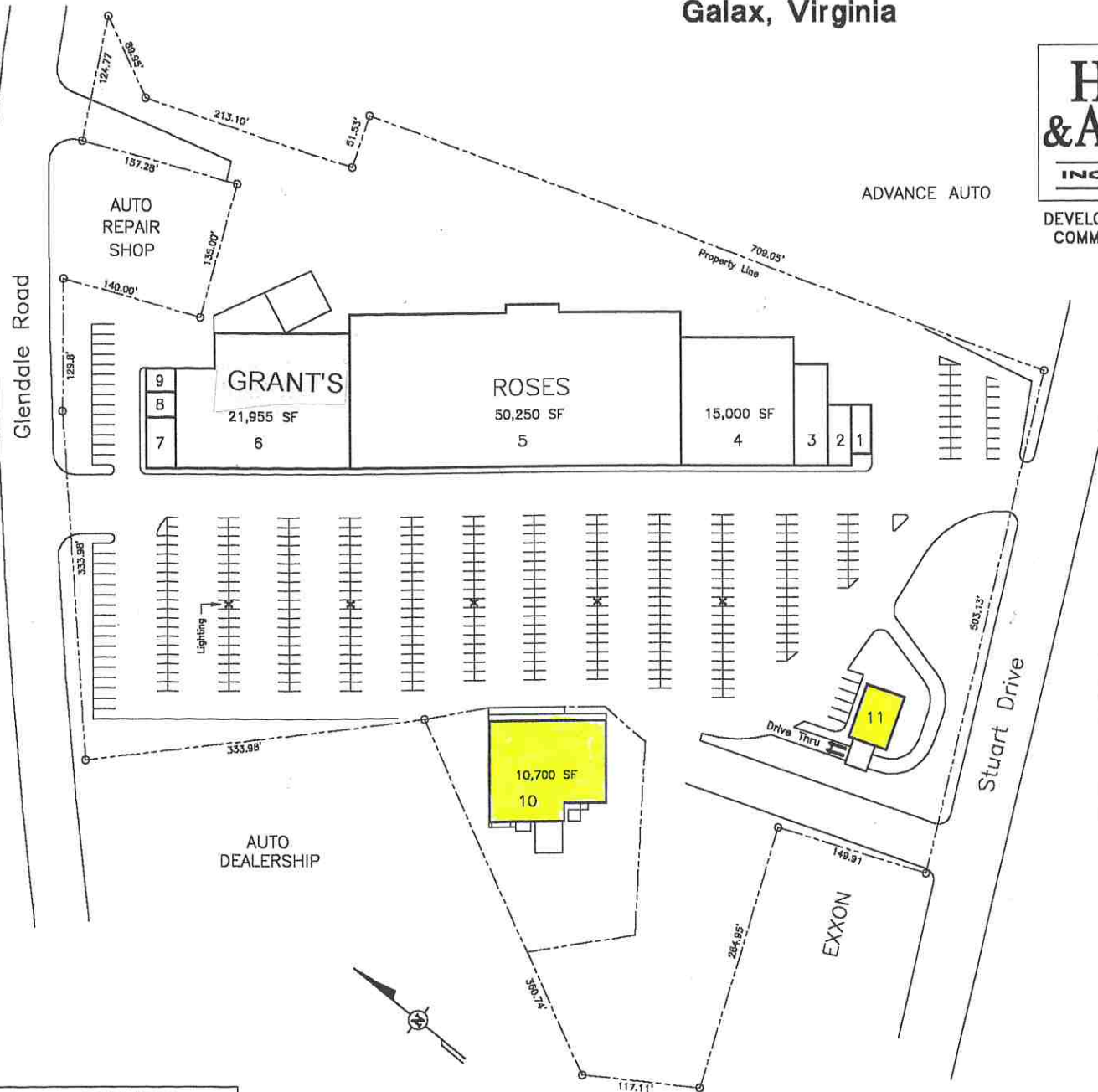
**HARDING
& ASSOCIATES**
INCORPORATED

5006 Monument Avenue
Richmond, Virginia 23230

OFFICE (804) 282-1590
FAX (804) 282-7147

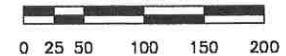
ADVANCE AUTO

DEVELOPMENT & MANAGEMENT
COMMERCIAL & INVESTMENT
PROPERTIES



LEGEND		
SPACE	TENANT	SIZE SF
1	The Eyeglass Place	900
2	Lendmark Financial Services	1,320
3 & 4	Carilion Clinics	19,354
5	Roses	50,250
6	Grant's Supermarket	21,955
7	S&H Services - Laundromat	1,500
8	Plaza Barber	750
9	Plaza Beauty	750
10	VACANT	10,700
11	VACANT	2,200
Total Square Feet =		109,679
Total Parking =		471

Scale in feet



Date: 07/06/2004

Professional Computer Drafting

804-378-8118

Fax: 804-378-1665

Drawn By: Albright

