

FOR LEASE

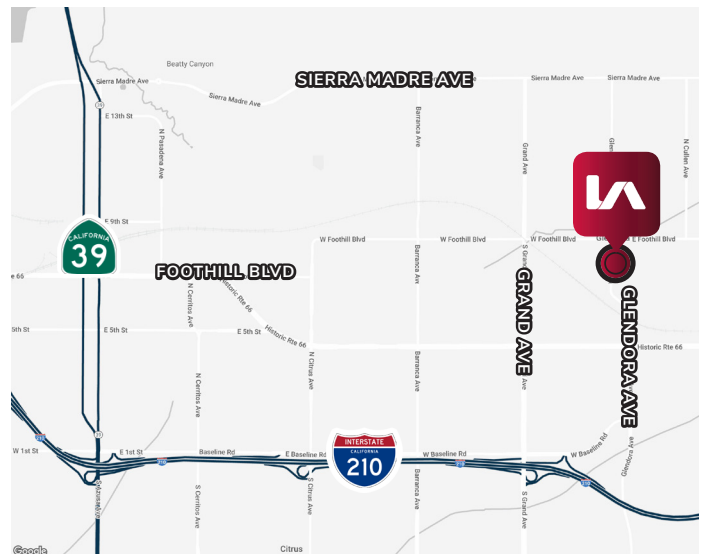
217-223 S. GLENDORA AVENUE

OFFICE SUITE

GLENDORA, CA 91741



- Reception, Private Offices, Kitchen
- Close Proximity to Downtown Glendora
- Ideally Located Near Local Amenities, Contributing to a Dynamic and Vibrant Atmosphere



MATTHEW RODRIGUEZ

mrodriguez@lee-assoc.com

D 909.373.2715

DRE #02235265

TODD LAUNCHBAUGH

tlaunchbaugh@lee-assoc.com

D 909.373.2911

DRE #01059250

LEE & ASSOCIATES - ONTARIO

3535 Inland Empire Boulevard
Ontario, CA 91764
(909) 989-7771



COMMERCIAL REAL ESTATE SERVICES

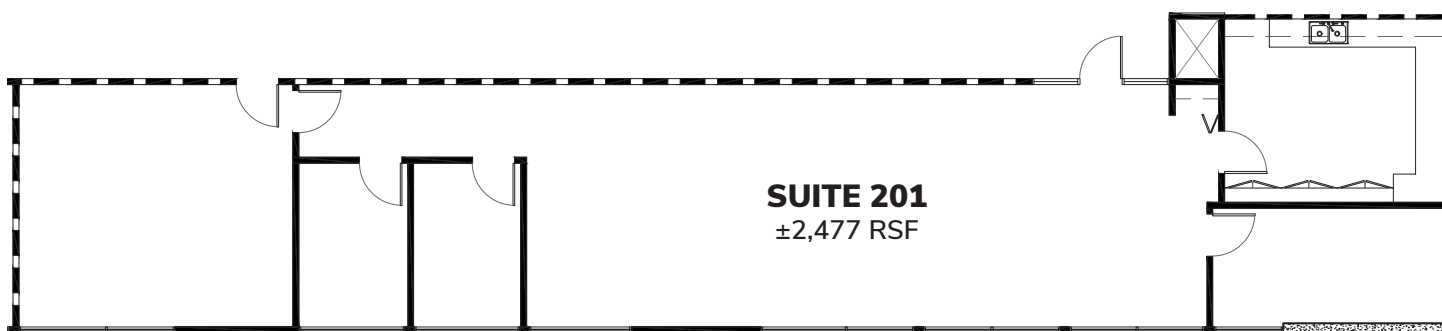
Corporate ID: 00976995

FOR LEASE

217-223 S. GLENDORA AVENUE

OFFICE SUITE

GLENDORA, CA 91741



AVAILABILITY

SUITE	RSF	PRICE	DATE AVAILABLE
201	±2,477 RSF	\$1.90 PSF MG + Electrical & In-suite Janitorial	Now

MATTHEW RODRIGUEZ

mrodriguez@lee-assoc.com

D 909.373.2715

DRE #02235265

TODD LAUNCHBAUGH

tlaunchbaugh@lee-assoc.com

D 909.373.2911

DRE #01059250

LEE & ASSOCIATES - ONTARIO

3535 Inland Empire Boulevard

Ontario, CA 91764

(909) 989-7771



LEE & ASSOCIATES

COMMERCIAL REAL ESTATE SERVICES

Corporate ID: 00976995