








GLOBAL CORPORATE CENTER

200 S. MAIN STREET, CORONA, CA



AVAILABILITIES

GLOBAL CORPORATE CENTER 200 S. MAIN STREET				
TOTAL SQUARE FEET ±68,590 RENTABLE SQUARE FEET				
Suite	Square Footage	Description	Floor Plan	Video
110	±4,101**	Reception, Multiple Offices, Open Area, Breakroom		
150	±4,728**	Double Door Entry off Lobby, Reception, Multiple Offices, Open Area		
308	±965*	Reception, 5 Private Offices		
310	±2,080*	Reception, Multiple Offices		

* Contiguous to ±3,045 SF Available

** Contiguous to ±8,829 SF Available

LEASE RATE	\$2.45 PSF
LEASE TYPE	Full Service Gross
RENT ADJUSTMENTS	Three percent (3%) per year
LEASE TERM	Three (3) to Five (5) years
TENANT IMPROVEMENTS	Negotiable

ANDREW PEAKE

951.276.3644 | DRE#: 01398894
APEAKE@LEERIVERSIDE.COM

JOSEPH PIERIK

951.276.3685 | DRE#: 02144961
JPIERIK@LEERIVERSIDE.COM

MASON WILSON

951.276.3603 | DRE#: 02163918
MWILSON@LEERIVERSIDE.COM





PROPERTY HIGHLIGHTS

- High Image Class A Office Building
- Freeway Signage Available to the 91 Freeway
- Abundant 4:1 Parking Ratio
- Close Proximity to a Variety of Retail Amenities
- Excellent Location with Immediate Access to I-15 and CA 91 Freeway and a Metolink Station

CITY OF CORONA

The City of Corona is located approximately 45 miles southeast of Los Angeles in western Riverside County. The City limits encompass 39.2 square miles and the population is over 160,000. Corona's economy is strong and getting stronger! There are more than 42,000 jobs within the city of Corona and there is a workforce of more than 84,000. Our retail and commercial areas are expanding and office development is booming. Corona has more than 34 million square feet of industrial space and more than 3 million square feet of office space existing, under construction, or planned. Economic Development is the business advocate always looking for ways to help the business community with incentives, communication, and team building.

ANDREW PEAKE

951.276.3644 | DRE#: 01398894
APEAKE@LEERIVERSIDE.COM

JOSEPH PIERIK

951.276.3685 | DRE#: 02144961
JPRIERIK@LEERIVERSIDE.COM

MASON WILSON

951.276.3603 | DRE#: 02163918
MWILSON@LEERIVERSIDE.COM



GLOBAL CORPORATE CENTER



ANDREW PEAKE

951.276.3644 | DRE#: 01398894
APEAKE@LEERIVERSIDE.COM

JOSEPH PIERIK

951.276.3685 | DRE#: 02144961
JPPIERIK@LEERIVERSIDE.COM

MASON WILSON

951.276.3603 | DRE#: 02163918
MWILSON@LEERIVERSIDE.COM



GLOBAL CORPORATE CENTER



ANDREW PEAKE

951.276.3644 | DRE#: 01398894
APEAKE@LEERIVERSIDE.COM

JOSEPH PIERIK

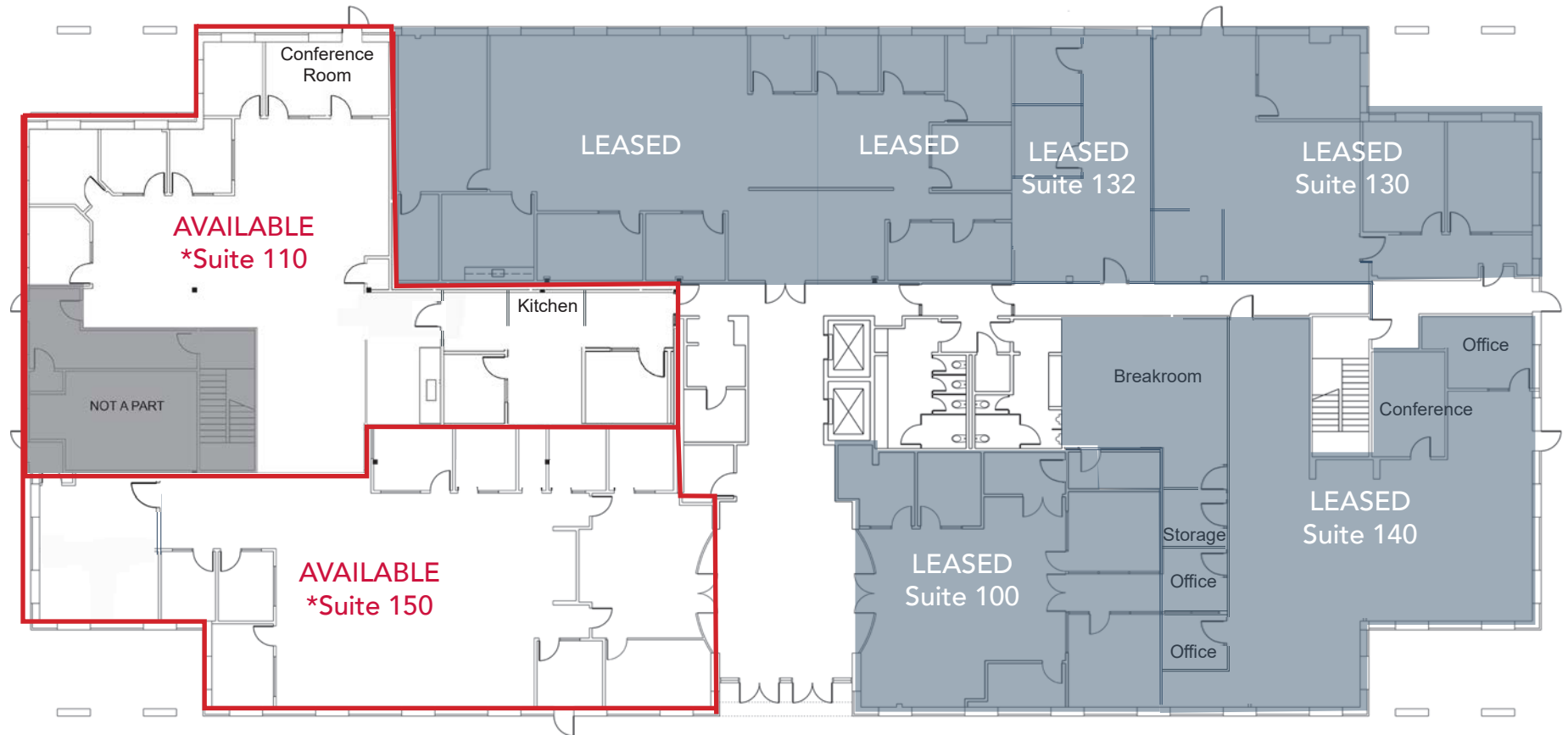
951.276.3685 | DRE#: 02144961
JPIERIK@LEERIVERSIDE.COM

MASON WILSON

951.276.3603 | DRE#: 02163918
MWILSON@LEERIVERSIDE.COM



FIRST FLOOR



*Suites 100 & 110 Contiguous

ANDREW PEAKE

951.276.3644 | DRE#: 01398894
APEAKE@LEERIVERSIDE.COM

JOSEPH PIERIK

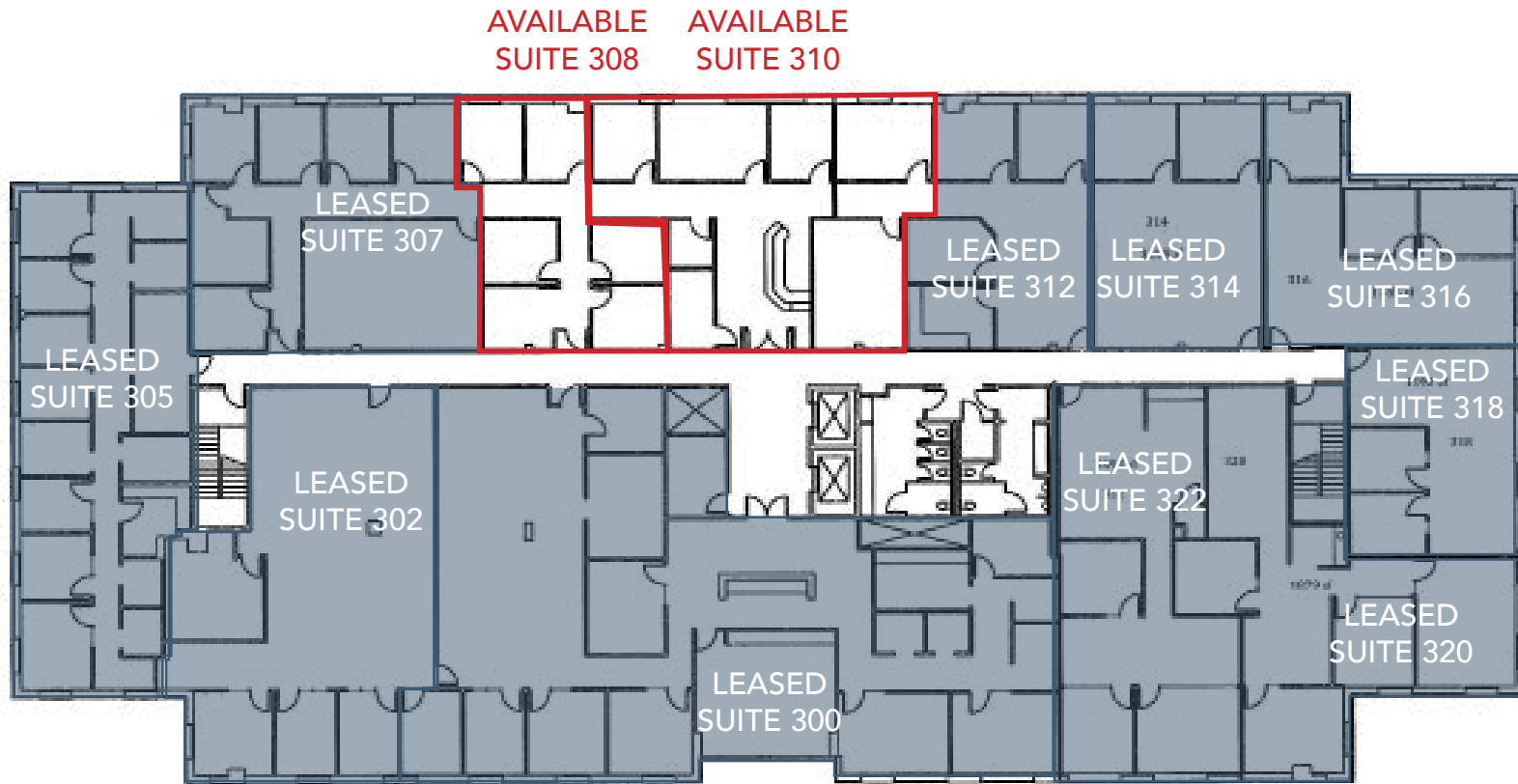
951.276.3685 | DRE#: 02144961
JPIERIK@LEERIVERSIDE.COM

MASON WILSON

951.276.3603 | DRE#: 02163918
MWILSON@LEERIVERSIDE.COM

LEE & ASSOCIATES
COMMERCIAL REAL ESTATE SERVICES

THIRD FLOOR



ANDREW PEAKE

951.276.3644 | DRE#: 01398894
APEAKE@LEERIVERSIDE.COM

JOSEPH PIERIK

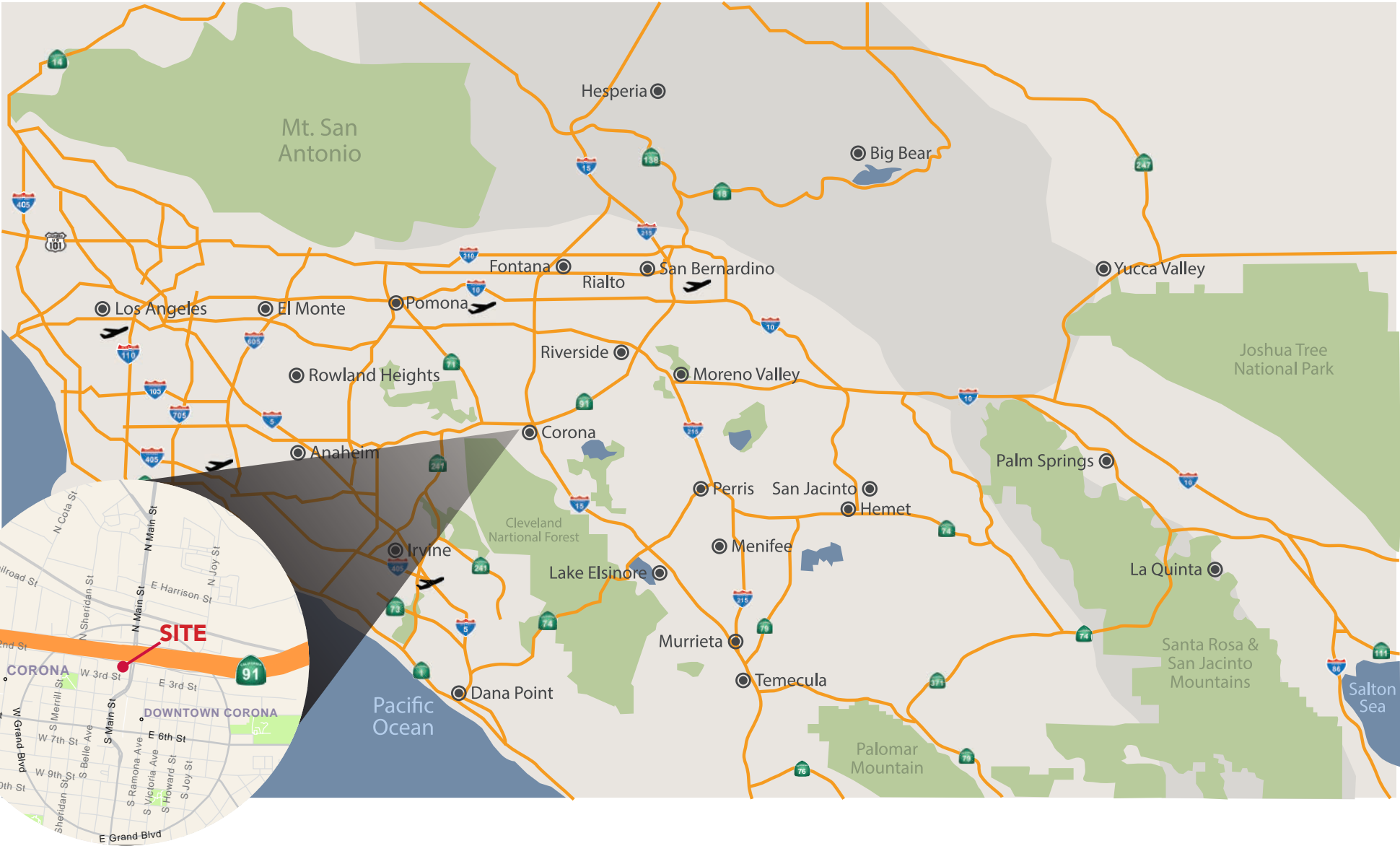
951.276.3685 | DRE#: 02144961
JPIERIK@LEERIVERSIDE.COM

MASON WILSON

951.276.3603 | DRE#: 02163918
MWILSON@LEERIVERSIDE.COM



LOCATION



ANDREW PEAKE

951.276.3644 | DRE#: 01398894
APEAKE@LEERIVERSIDE.COM

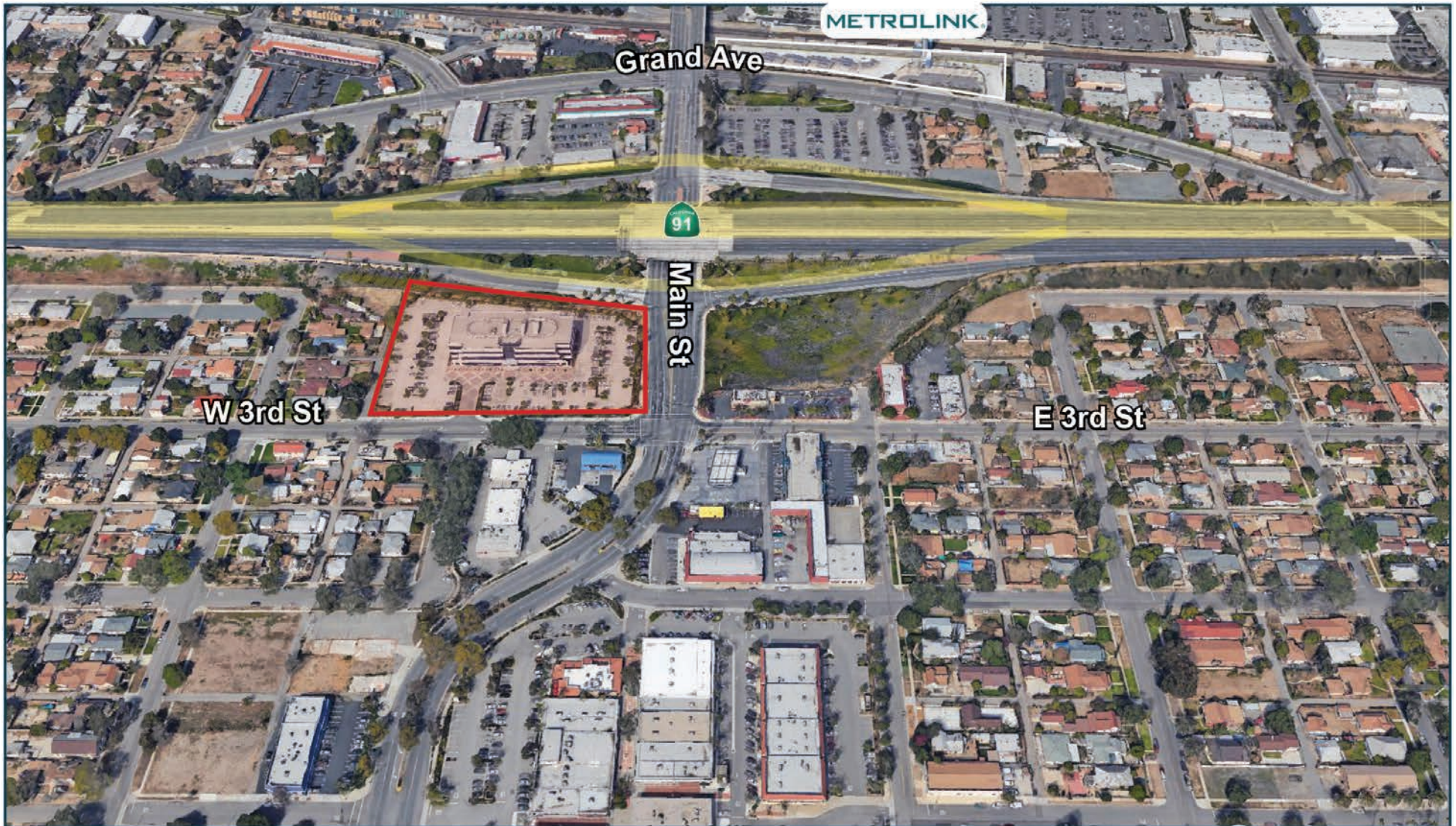
JOSEPH PIERIK

951.276.3685 | DRE#: 02144961
JPIERIK@LEERIVERSIDE.COM

MASON WILSON

951.276.3603 | DRE#: 02163918
MWILSON@LEERIVERSIDE.COM





ANDREW PEAKE

951.276.3644 | DRE#: 01398894
APEAKE@LEERIVERSIDE.COM

JOSEPH PIERIK

951.276.3685 | DRE#: 02144961
JPIERIK@LEERIVERSIDE.COM

MASON WILSON

951.276.3603 | DRE#: 02163918
MWILSON@LEERIVERSIDE.COM

